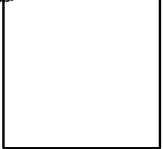




CHAPMAN GRIFFIN LANIER SUSENBACH ARCHITECTS

REGISTERED ARCHITECT

RELEASED FOR CONSTRUCTION



STATE OF GEORGIA REGISTERED ARCHITECT

DATE	NO.	DESCRIPTION
01/27/18	1	PRELIMINARY SUBMITTAL DESIGN DEVELOPMENT
01/19/18	2	PRELIMINARY SUBMITTAL DESIGN DEVELOPMENT
01/17/18	3	PERMIT SET
10/18/18	4	FINAL CODE SUBMITTAL ISSUED FOR PROPOSALS

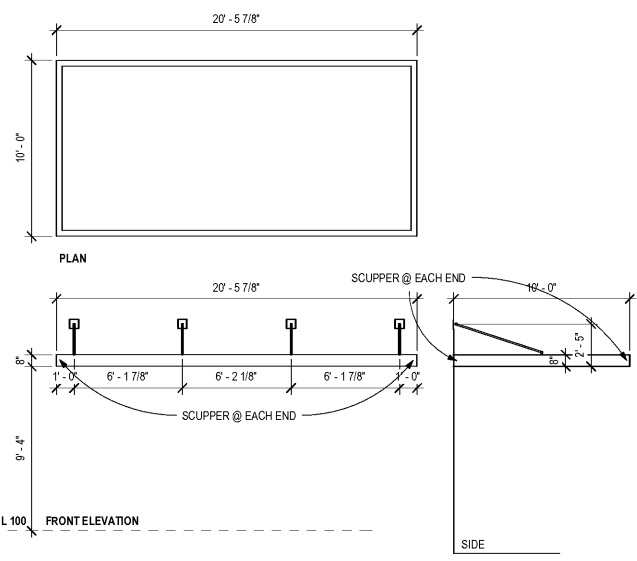
DATE	NO.	DESCRIPTION
01/27/18	1	PRELIMINARY SUBMITTAL DESIGN DEVELOPMENT
01/19/18	2	PRELIMINARY SUBMITTAL DESIGN DEVELOPMENT
01/17/18	3	PERMIT SET
10/18/18	4	FINAL CODE SUBMITTAL ISSUED FOR PROPOSALS

DOE FACILITY CODE: 660-3086
 RIVERWOOD HIGH SCHOOL PHASE 3-8
 AUDITORIUM/GYMNASIUM ADDITION
 5900 RAIDER DRIVE NW SANDY SPRINGS, GA 30328
 FULTON COUNTY SCHOOLS RFP NO. 411-19

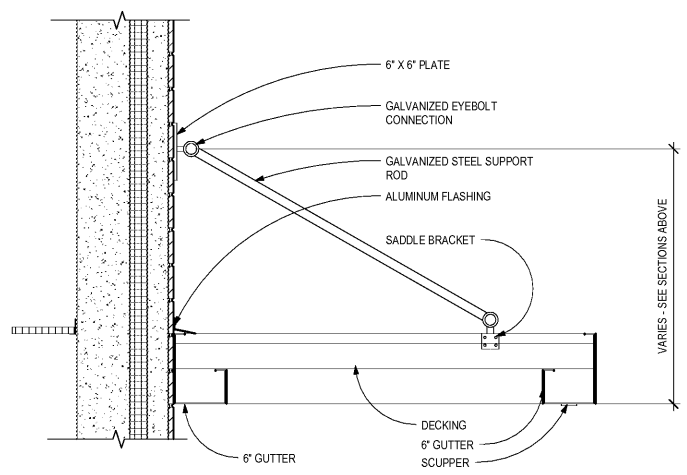
PROJECT NO. 16015.02
 DATE: 09/17/18
 DRAWN BY: Author
 CHECKED BY: Checker

A-6.60

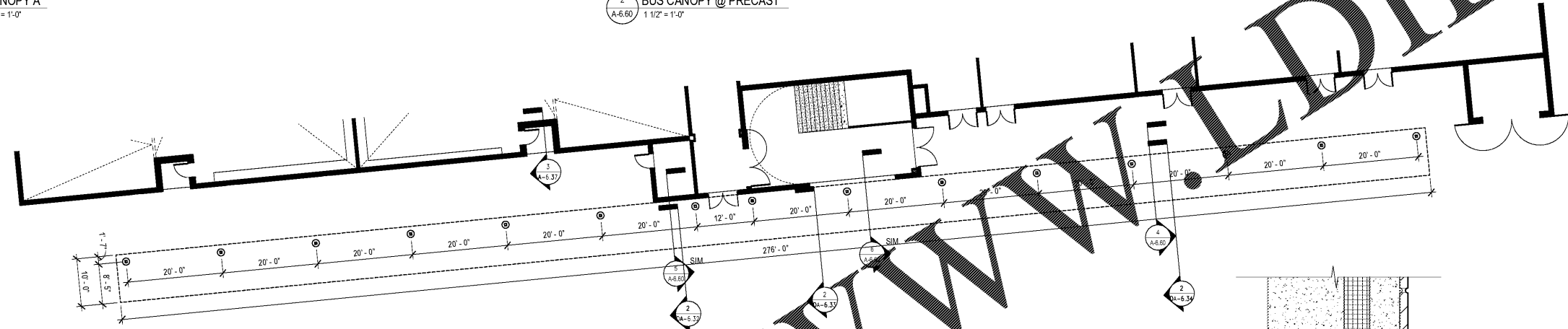
CHAPMAN GRIFFIN LANIER SUSENBACH ARCHITECTS
 400 Galleria Pkwy., Suite 100 Atlanta, Ga 30339 Phone: 404.733.5493



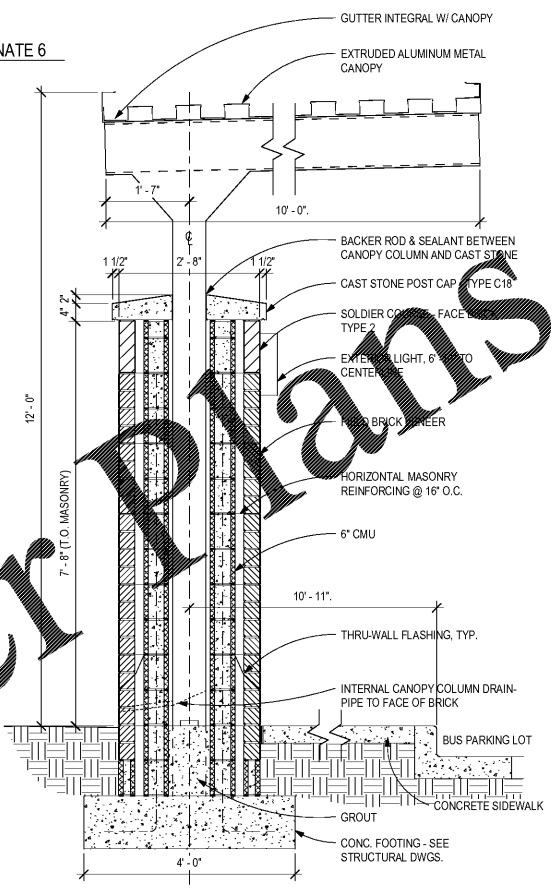
1 CANOPY A
 A-6.60 1/4" = 1'-0"



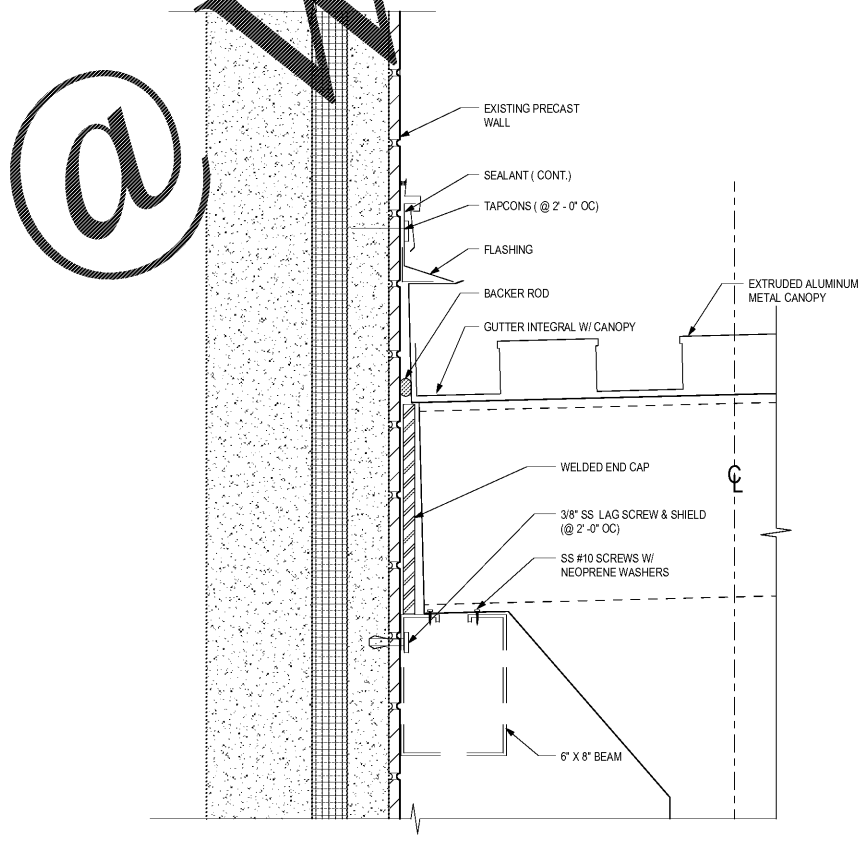
2 BUS CANOPY @ PRECAST
 A-6.60 1 1/2" = 1'-0"



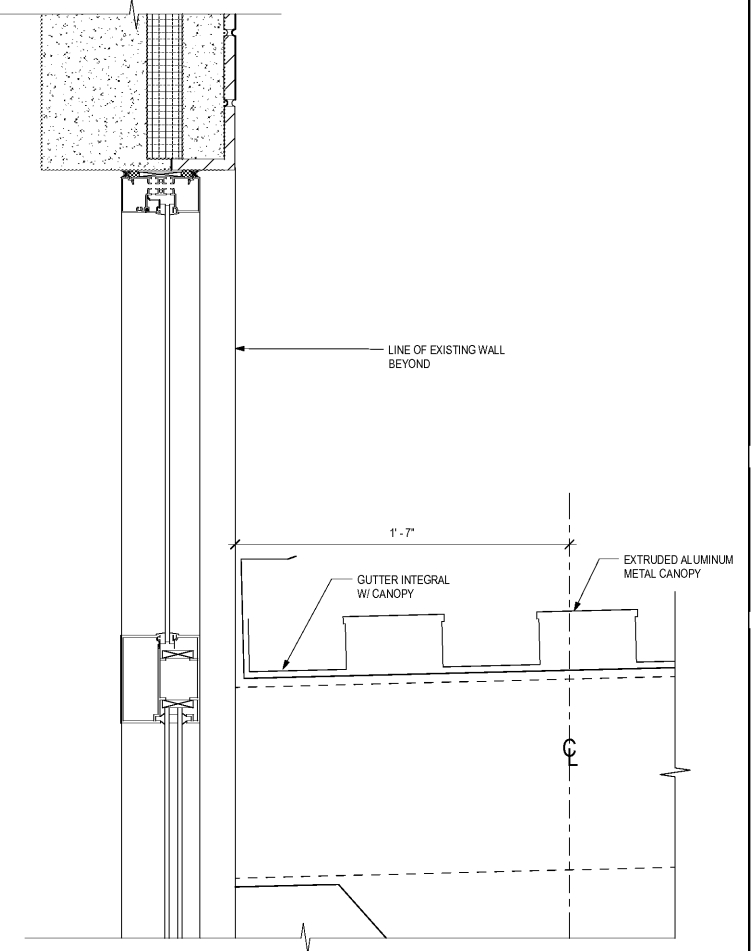
3 PLAN - BUS CANOPY - BID ALTERNATE 6
 A-6.60 3/32" = 1'-0"



4 BUS CANOPY - BID ALTERNATE 6
 A-6.60 3/4" = 1'-0"



5 BUS CANOPY DETAIL @ PRECAST - BID ALTERNATE 6
 A-6.60 3" = 1'-0"



6 BUS CANOPY DETAIL @ WALL - BID ALTERNATE 6
 A-6.60 3" = 1'-0"

Order Plans @ WWW.WLDIline.com