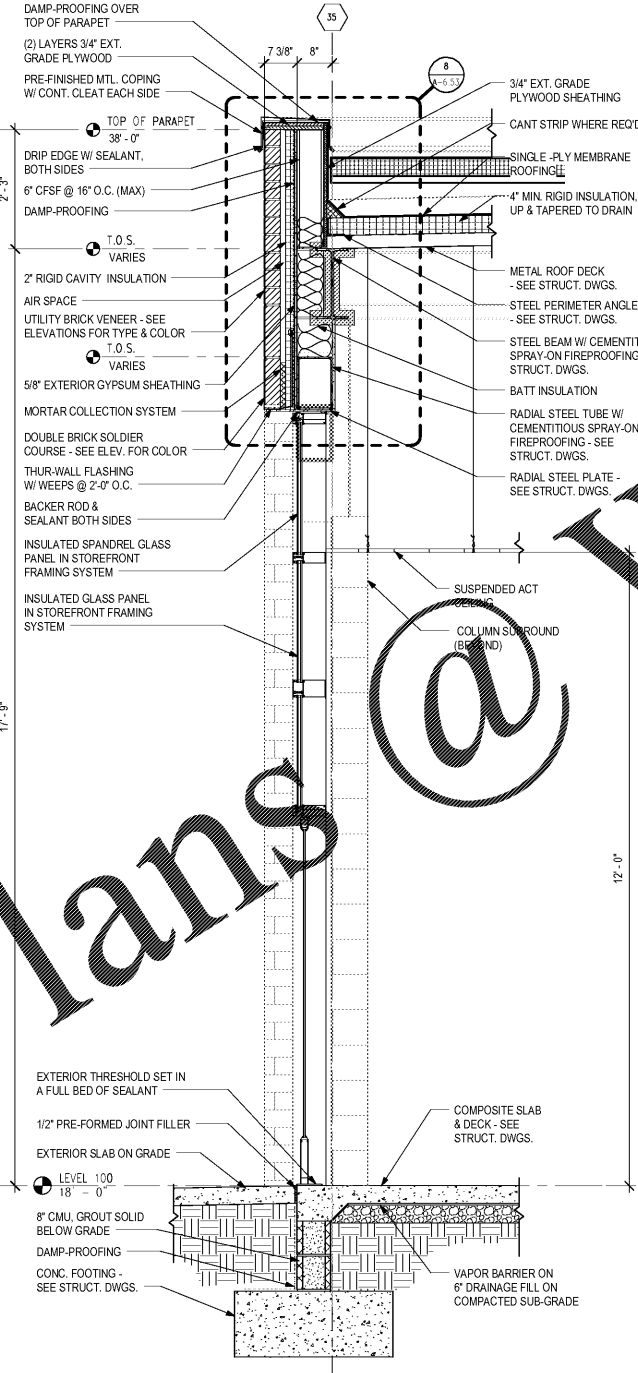
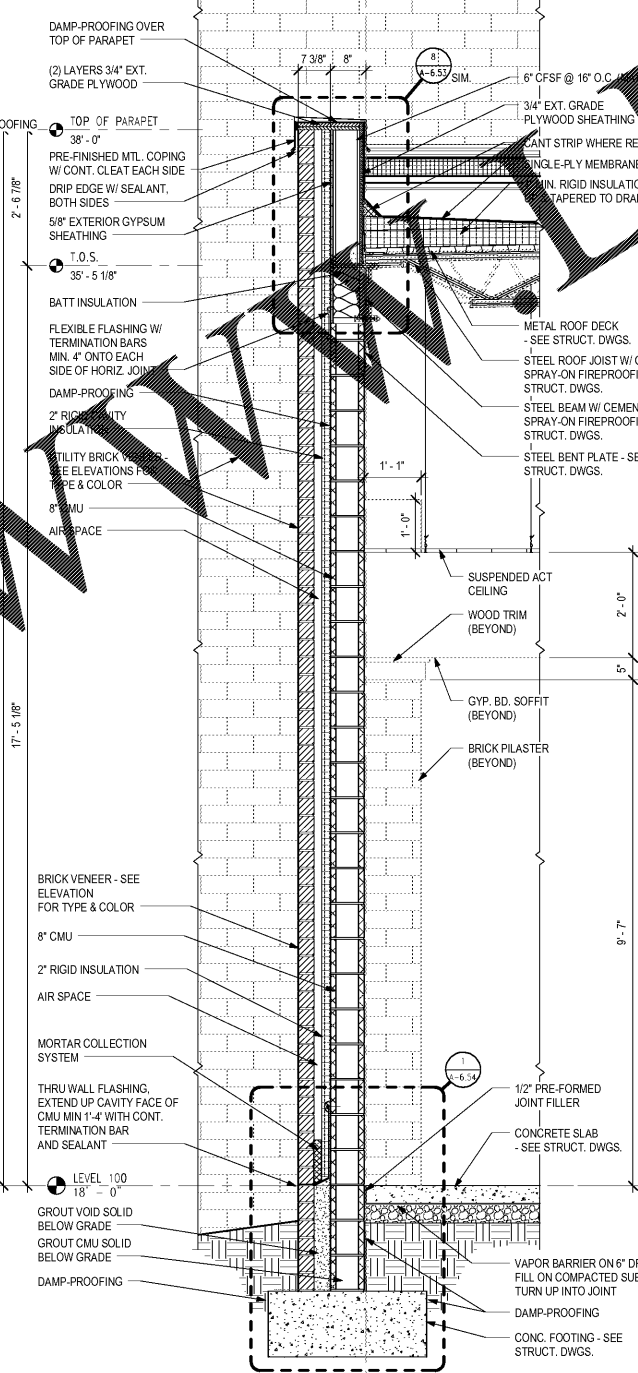


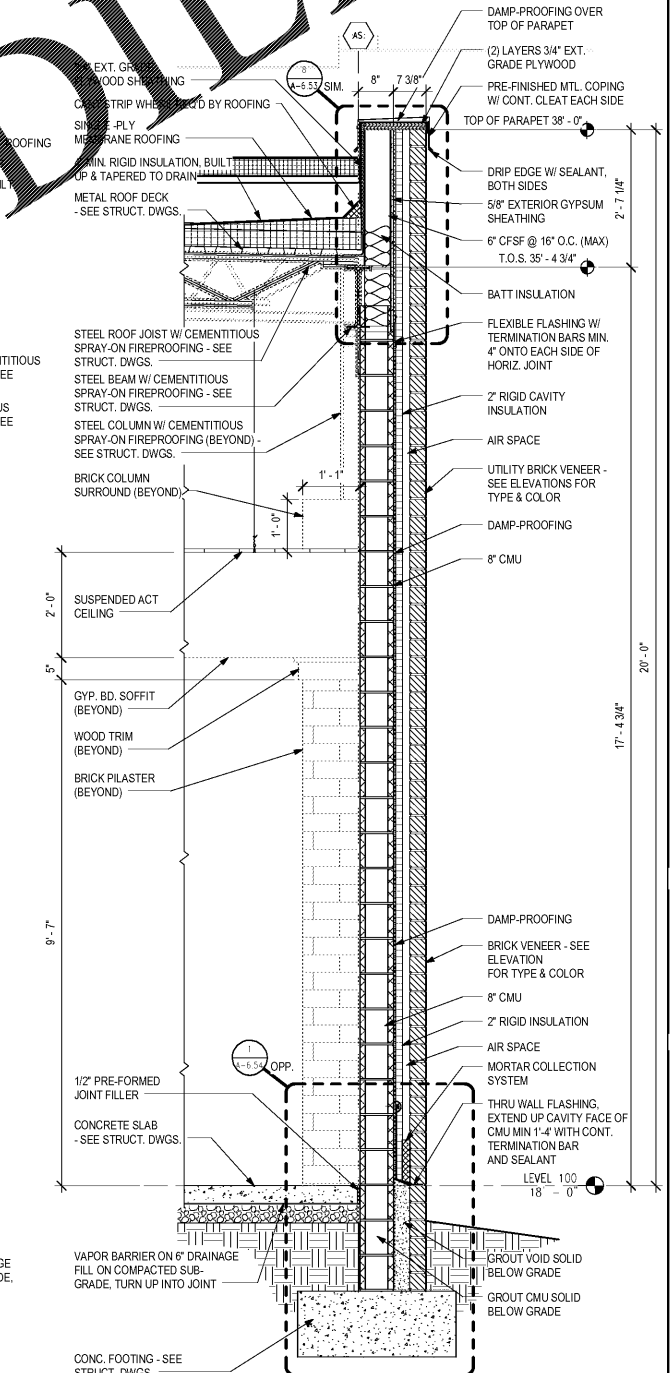
1 WALL SECTION - SCENERY CONSTRUCTION - NORTH WALL
A-6.35 3/4" = 1'-0"



2 WALL SECTION - AUDITORIUM LOBBY
A-6.35 3/4" = 1'-0"



3 WALL SECTION - AUDITORIUM LOBBY
A-6.35 3/4" = 1'-0"



4 WALL SECTION - AUDITORIUM LOBBY
A-6.35 3/4" = 1'-0"



DATE	NO.	DESCRIPTION
02/27/18		ISSUE PRELIMINARY SUBMITTAL DESIGN DEVELOPMENT
04/19/18		ISSUE CONSTRUCTION DOCUMENTS
09/17/18		ISSUE CHECK & SET/FINAL SET
10/18/18		FINAL GDS SUBMITTAL ISSUED FOR PROPOSAL

CHAPMAN GRIFFIN LANIER SUSENBACH ARCHITECTS
 400 Galleria Pkwy, Suite 100 Atlanta, Ga 30339 Phone: 404.733.5493
**RIVERWOOD HIGH SCHOOL PHASE 3-B
 AUDITORIUM/GYMNASIUM ADDITION**
 5900 RAIDER DRIVE NW SANDY SPRINGS, GA 30328
 FULTON COUNTY SCHOOLS RFP NO. 411-19

WALL SECTIONS

PROJECT NO.	16015.02
DATE	09/17/18
DRAWN BY	Author
CHECKED BY	Checker

A-6.35