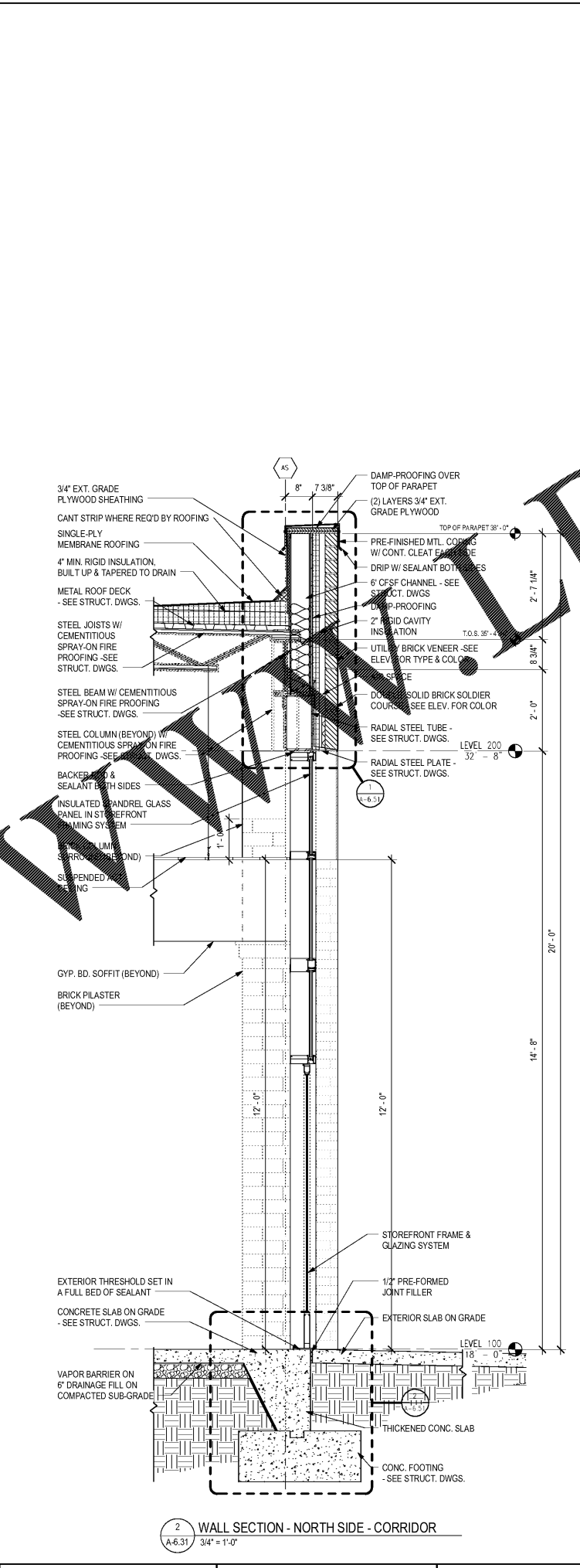
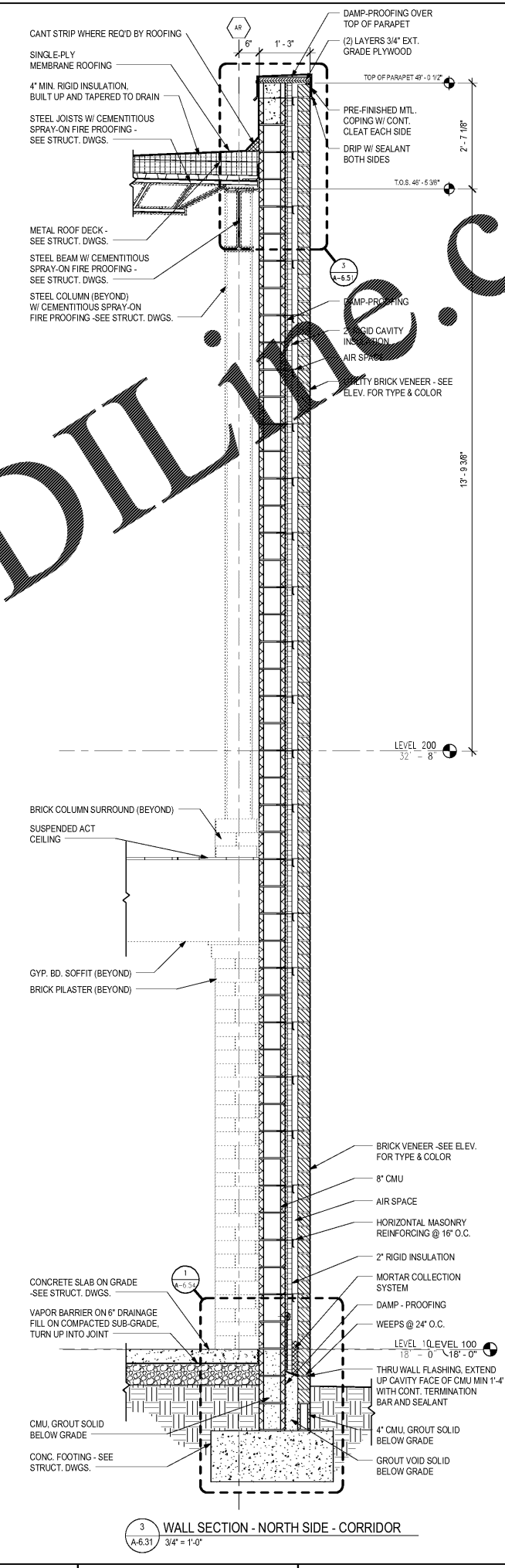


1 ws. C. Corridor North of Gym_Aud Entry
A-6.31 3/4" = 1'-0"




2 WALL SECTION - NORTH SIDE - CORRIDOR
A-6.31 3/4" = 1'-0"




3 WALL SECTION - NORTH SIDE - CORRIDOR
A-6.31 3/4" = 1'-0"

Order Plans @

WWW.LDILLINE.COM



CGLS ARCHITECTS
CHAPMAN GRIFFIN LANIER SUSSENBACH ARCHITECTS INC.
2018



ROBERT SUSENBACH
REGISTERED ARCHITECT

DATE	NO.	DESCRIPTION
01/27/18	002	PRELIMINARY SUBMITTAL DESIGN DEVELOPMENT
01/19/18	001	PRELIMINARY SUBMITTAL DESIGN DEVELOPMENT
09/17/18	001	FOR CONSTRUCTION DOCUMENTS
10/10/18	001	FOR CHECK - SET / PERMIT SET
11/01/18	001	FINAL GDC SUBMITTAL ISSUED FOR PROPOSALS

CHAPMAN GRIFFIN LANIER SUSENBACH ARCHITECTS
400 Galleria Pkwy., Suite 100 Atlanta, Ga 30339 Phone: 404.733.5493

RIVERWOOD HIGH SCHOOL PHASE 3-8 AUDITORIUM/GYMNASIUM ADDITION
5900 RAIDER DRIVE NW SANDY SPRINGS, GA 30328
FULTON COUNTY SCHOOLS RFP NO. 411-19

PROJECT NO. 16015.02
DATE: 09/17/18
DESIGNED BY: Author
CHECKED BY: Checker

A-6.31