



CHAPMAN GRIFFIN LANIER SUSENBACH ARCHITECTS

REGISTERED ARCHITECT

STATE OF GEORGIA  
REGISTERED ARCHITECT

DATE NO. DESCRIPTION

DATE	NO.	DESCRIPTION
03/27/18		CODE PRELIMINARY SUBMITTAL DESIGN DEVELOPMENT
09/19/18		CODE CONSTRUCTION DOCUMENTS
09/17/18		CODE CHECK-SEL/ FINAL SET
10/16/18		FINAL CODE SUBMITTAL ISSUED FOR PROPOSALS

CHAPMAN GRIFFIN LANIER SUSENBACH ARCHITECTS  
400 Galleria Pkwy., Suite 100 Atlanta, Ga 30339 Phone: 404.733.5493

DOE FACILITY CODE 660-3086  
RIVERWOOD HIGH SCHOOL PHASE 3-8  
AUDITORIUM/GYMNASIUM ADDITION  
5900 RAIDER DRIVE NW SANDY SPRINGS, GA 30328  
FULTON COUNTY SCHOOLS RFP NO. 411-19

BUILDING SECTIONS

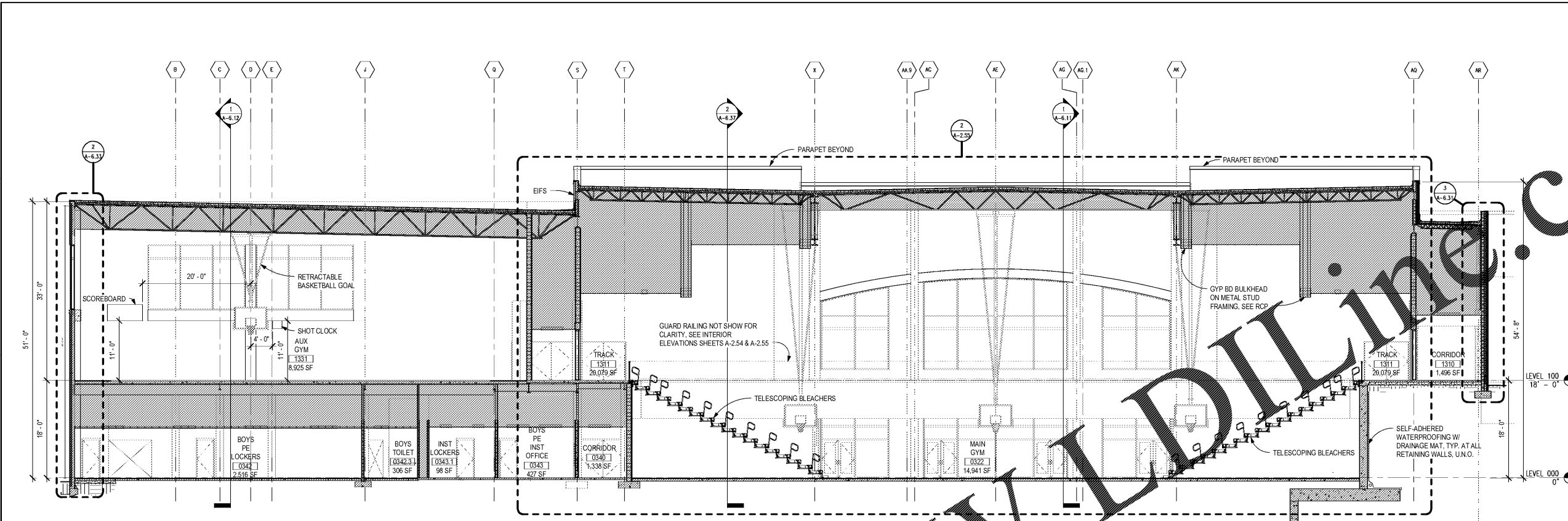
PROJECT NO. 16015.02

DATE 09/17/18

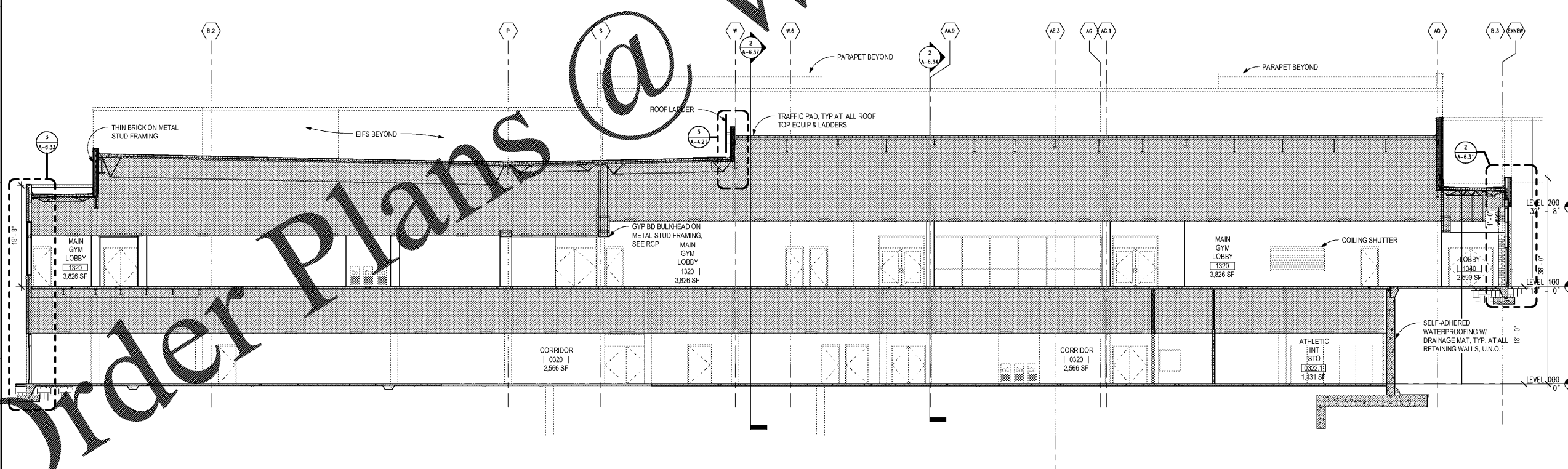
DRAWN BY: Author  
CHECKED BY: Cracker

SHEET NO.

A-6.10



2 BUILDING SECTION - THROUGH MAIN GYMNASIUM  
1/8" = 1'-0"



1 BUILDING SECTION - THRU CENTRAL CORRIDOR  
1/8" = 1'-0"

Order Plans @ WWW.LDLINE.COM