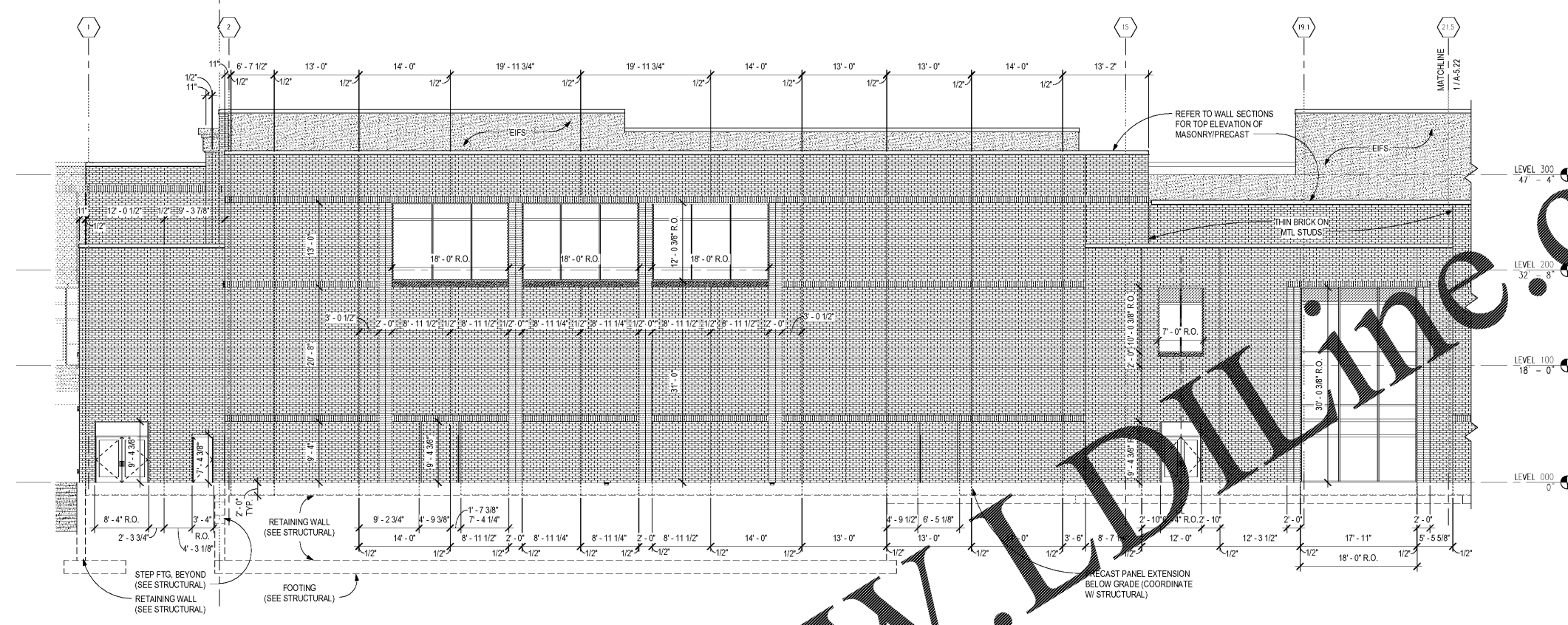
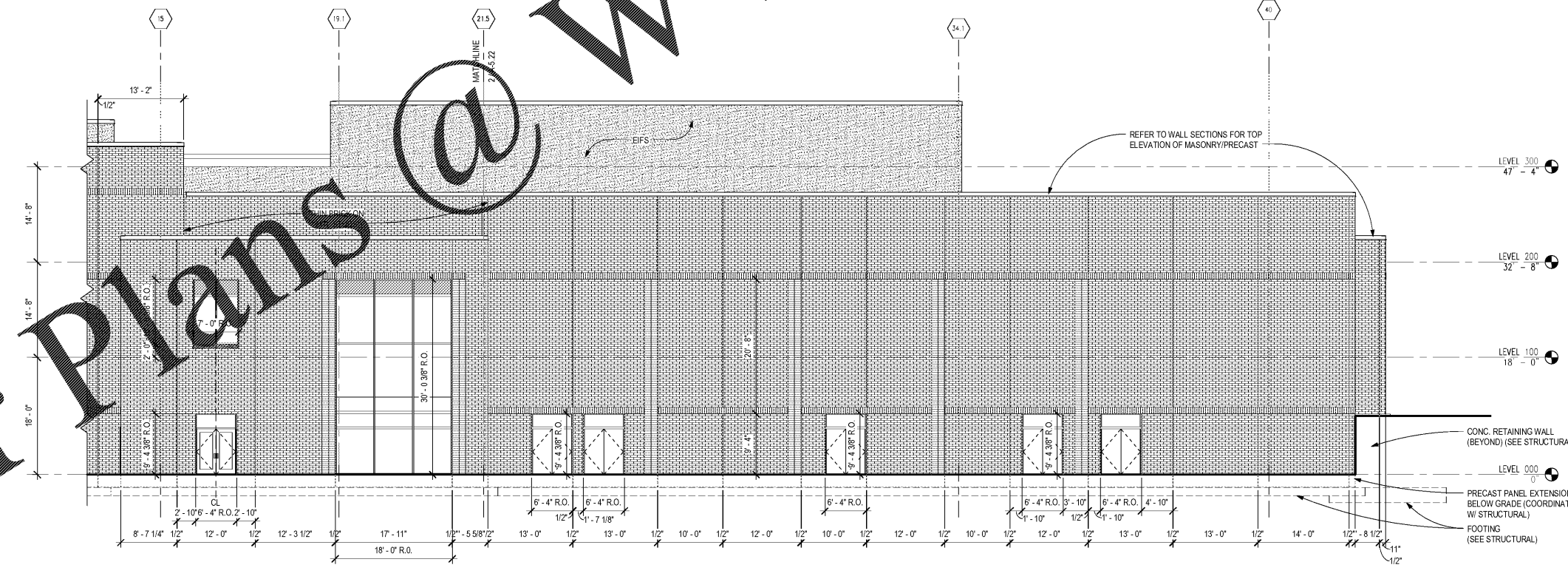


Order Plans @

WWW.LDLINE.COM



2 EXT. ELEV. - PRECAST PANELS & MASONRY JOINTS - SOUTH
1/8" = 1'-0"



1 EXT. ELEV. - PRECAST PANELS & MASONRY JOINTS - SOUTH
1/8" = 1'-0"

Architecture
Facilitation Design

CHAPMAN GRIFFIN LANIER SUSENBACH ARCHITECTS
REGISTERED ARCHITECTS IN THE STATE OF GEORGIA
2018

RELEASED FOR CONSTRUCTION

DATE	NO.	DESCRIPTION
03/27/18		SCHE PRELIMINARY SUBMITTAL
06/19/18		DESIGN DEVELOPMENT
09/17/18		SCHE CONSTRUCTION DOCUMENTS
10/18/18		SCHE CHECK + SET / PERMIT SET
11/01/18		FINAL SCHE SUBMITTAL ISSUED FOR PROPOSALS

DOE FACILITY CODE: 660-3066
RIVERWOOD HIGH SCHOOL PHASE 3-8
AUDITORIUM/GYMNASIUM ADDITION
5900 RAIDER DRIVE NW SANDY SPRINGS, GA 30328
FULTON COUNTY SCHOOLS RFP NO. 411-19

PROJECT NO. 16015.02
DATE: 09/17/18
DRAWN BY: Author
CHECKED BY: Checker

A-5.22