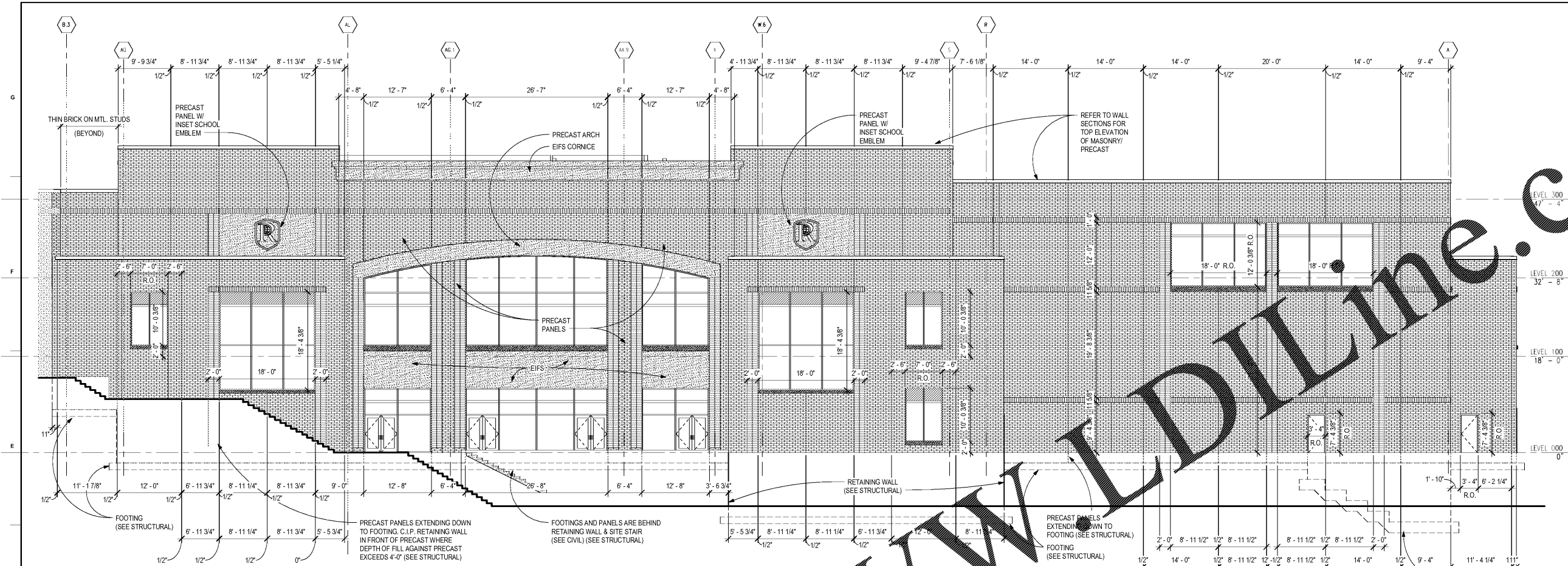
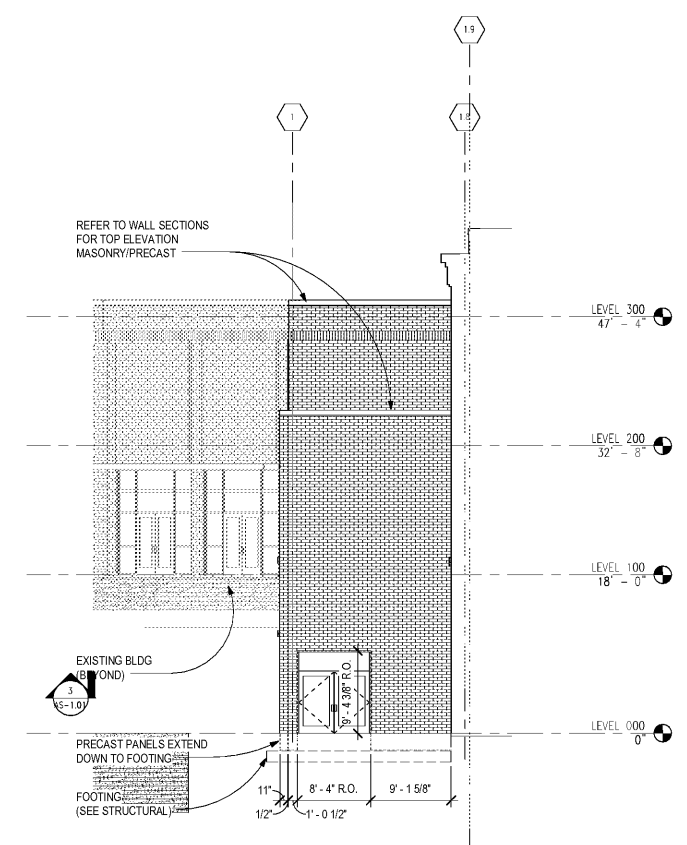


Order Plans @ WWW.WLDLINE.COM



2 EXT. ELEV. - PRECAST PANELS & MASONRY JOINTS - WEST
A-5.21 1/8" = 1'-0"



1 EXT. ELEV. - PRECAST PANELS - SOUTH STAIR H
A-5.21 1/8" = 1'-0"

Architecture
Facilitation Design

CHAPMAN GRIFFIN LANIER SUSSENBACH ARCHITECTS
400 Galleria Pkwy., Suite 100 Atlanta, Ga 30339 Phone: 404.733.5493

STATE OF GEORGIA
REGISTERED ARCHITECT

DATE	NO.	DESCRIPTION
03/27/18		SCHEMATIC DEVELOPMENT
06/19/18		SCHEMATIC DEVELOPMENT
09/17/18		SCHEMATIC DEVELOPMENT
10/18/18		SCHEMATIC DEVELOPMENT
11/01/18		SCHEMATIC DEVELOPMENT

DOE FACILITY CODE: 660-3086
RIVERWOOD HIGH SCHOOL PHASE 3-3
AUDITORIUM/GYMNASIUM ADDITION
5900 RAIDER DRIVE NW SANDY SPRINGS, GA 30328
FULTON COUNTY SCHOOLS RFP NO. 411-19

PROJECT NO. 16015.02
DATE: 09/17/18
DESIGNED BY: Author
CHECKED BY: Checker

16/07/2018 11:17:00

A-5.21