

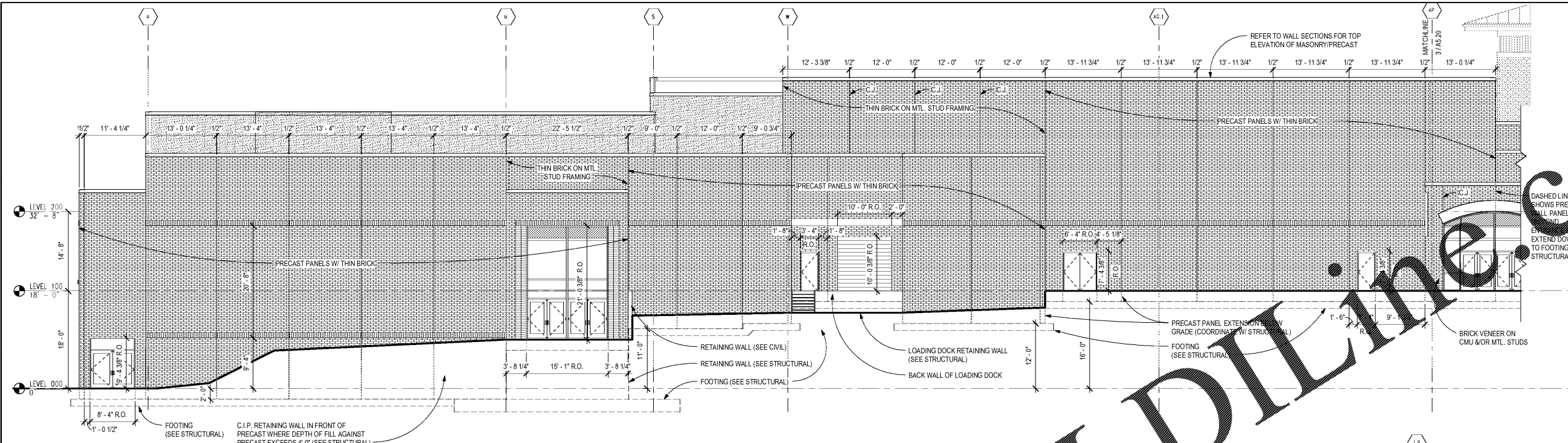
DATE	NO.	DESCRIPTION
03/27/18		SCHEMATIC DEVELOPMENT
06/19/18		SCHEMATIC DEVELOPMENT
09/17/18		SCHEMATIC DEVELOPMENT
10/18/18		SCHEMATIC DEVELOPMENT
10/18/18		SCHEMATIC DEVELOPMENT

DATE	NO.	DESCRIPTION
03/27/18		SCHEMATIC DEVELOPMENT
06/19/18		SCHEMATIC DEVELOPMENT
09/17/18		SCHEMATIC DEVELOPMENT
10/18/18		SCHEMATIC DEVELOPMENT
10/18/18		SCHEMATIC DEVELOPMENT

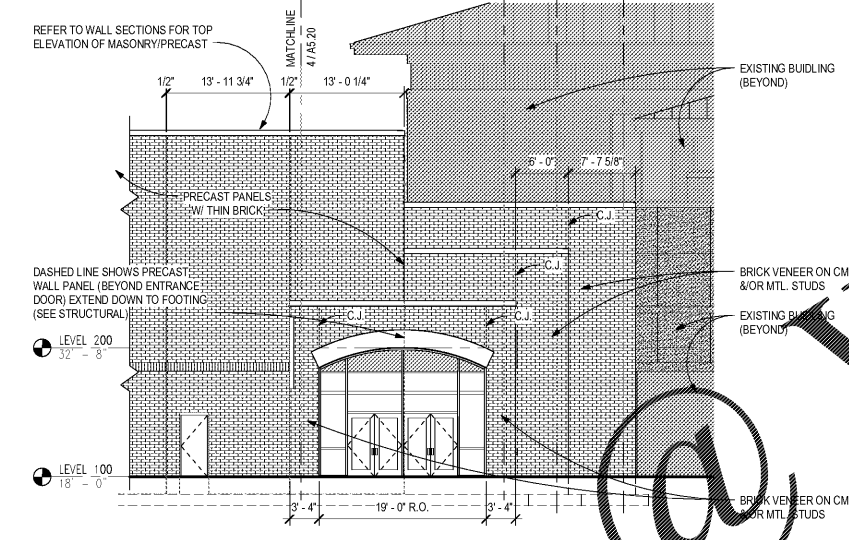
DOE FACILITY CODE: 660-3066
 RIVERWOOD HIGH SCHOOL PHASE 3-8
 AUDITORIUM/GYMNASIUM ADDITION
 5900 RAIDER DRIVE NW SANDY SPRINGS, GA 30328
 FULTON COUNTY SCHOOLS RFP NO. 411-19

CHAPMAN GRIFFIN LANIER SUSSENBACH ARCHITECTS
 400 Galleria Pkwy., Suite 100 Atlanta, Ga 30339 Phone: 404.733.5493
 PROJECT NO. 16015.02
 DATE 09/17/18
 DRAWN BY: Author
 CHECKED BY: Checker

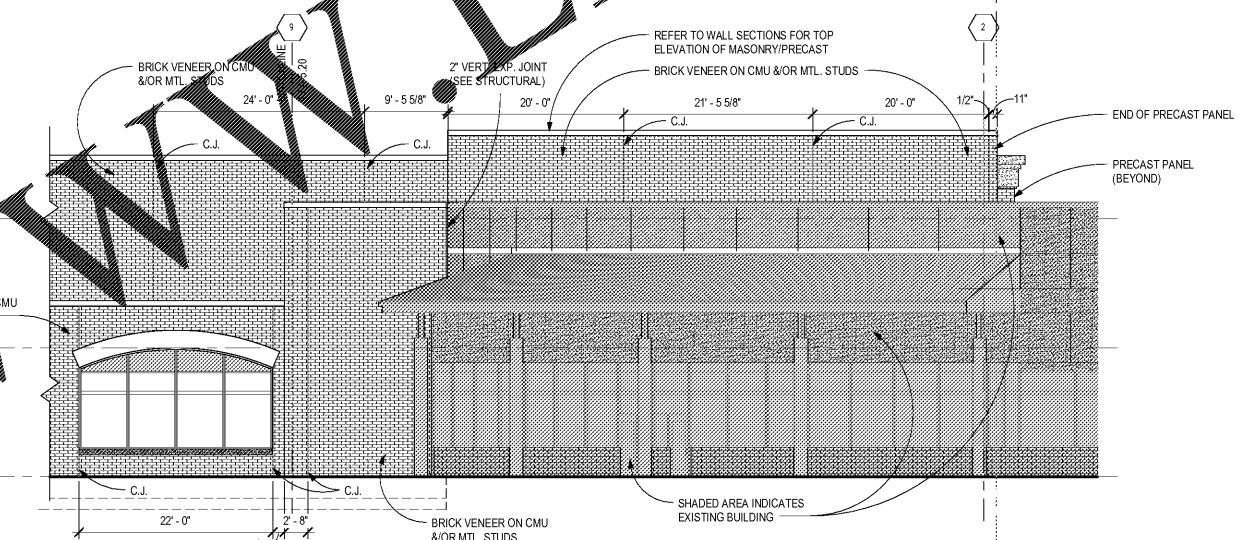
A-5.20



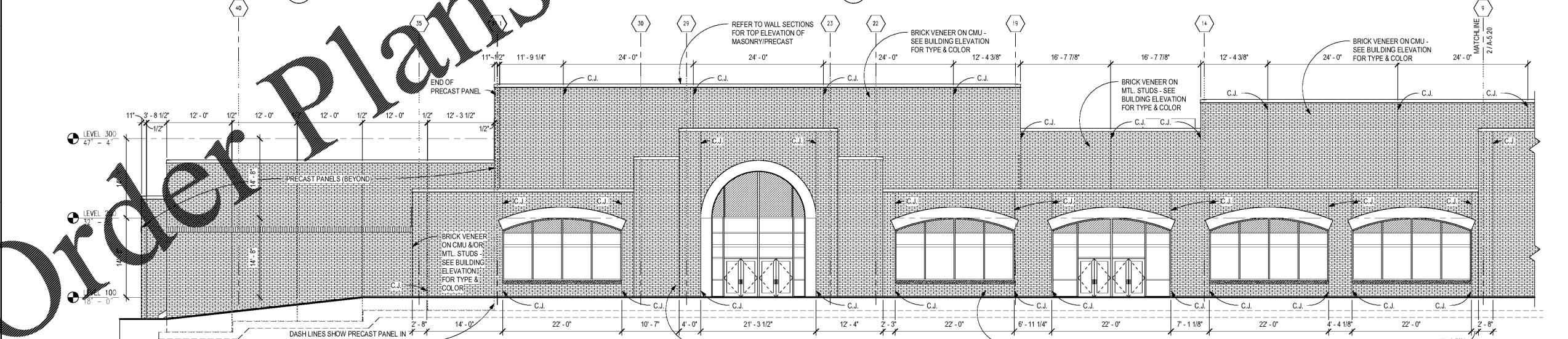
4 EXT. ELEV. - PRECAST PANELS & MASONRY JOINTS - EAST
 A-5.20 1/8" = 1'-0"



3 EXT. ELEV. - PRECAST PANELS & MASONRY JOINTS - EAST
 A-5.20 1/8" = 1'-0"



2 EXT. ELEV. - PRECAST PANELS & MASONRY JOINTS - NORTH
 A-5.20 1/8" = 1'-0"



1 EXT. ELEV. - PRECAST PANELS & MASONRY JOINTS - NORTH
 A-5.20 1/8" = 1'-0"

Order Plans @ WWW.LDLINE.COM