

**GENERAL NOTES:**  
 EXTERIOR WINDOWS ARE ALUMINUM CURTAIN WALL OR STOREFRONT WITH INSULATED TINTED GLAZING & APPLIED MUTTIN GRILLE ON INSIDE & OUTSIDE OF GLASS W/ SPACER.  
 ALL DOWNSPOUTS RUNNING TO GRADE ARE TO BE TIED INTO UNDERGROUND DRAINAGE SYSTEM (SEE CIV/EL) VIA DOWNSPOUT BOOTS (SEE DETAIL A-4.21)  
 C.J. = CONTROL JOINT  
 D.S.N. (DOWNSPOUT NOZZLE) = EMERGENCY OVERFLOW DRAIN. SEE DETAIL 11/A-4.20  
 AFF. = ABOVE FINISHED FLOOR



DATE	NO.	DESCRIPTION
03/27/18	1	SCHEMATIC DESIGN SUBMITTAL
06/19/18	2	SCHEMATIC DESIGN DEVELOPMENT
09/17/18	3	SCHEMATIC DESIGN DEVELOPMENT
10/10/18	4	SCHEMATIC DESIGN DEVELOPMENT
11/01/18	5	FINAL SCHEMATIC DESIGN FOR PROPOSAL

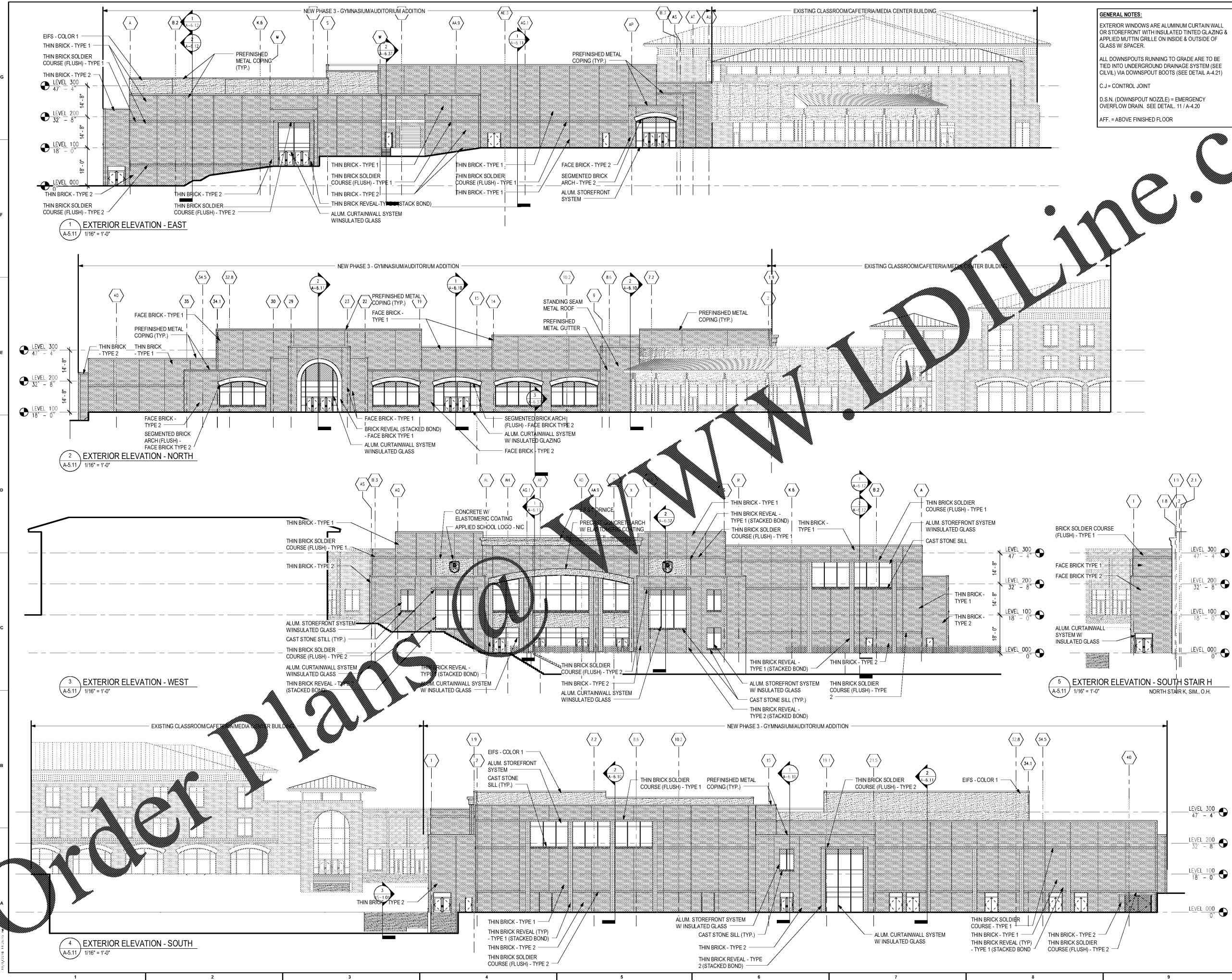
DATE	NO.	DESCRIPTION
03/27/18	1	SCHEMATIC DESIGN SUBMITTAL
06/19/18	2	SCHEMATIC DESIGN DEVELOPMENT
09/17/18	3	SCHEMATIC DESIGN DEVELOPMENT
10/10/18	4	SCHEMATIC DESIGN DEVELOPMENT
11/01/18	5	FINAL SCHEMATIC DESIGN FOR PROPOSAL

DOE FACILITY CODE: 660-3086  
 RIVERWOOD HIGH SCHOOL PHASE 3-8  
 AUDITORIUM/GYMNASIUM ADDITION  
 5900 RAIDER DRIVE NW SANDY SPRINGS, GA 30328  
 FULTON COUNTY SCHOOLS RFP NO. 411-19

CHAPMAN GRIFFIN LANIER SUSENBACH ARCHITECTS  
 400 Galleria Pkwy., Suite 100 Atlanta, Ga 30339 Phone: 404.723.5493

PROJECT NO.	16015.02
DATE	09/17/18
DESIGNED BY	Author
CHECKED BY	Checker

**A-5.11**



Order Plans @