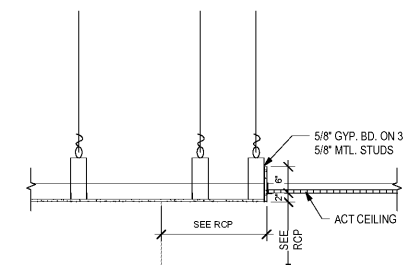
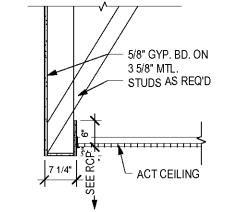


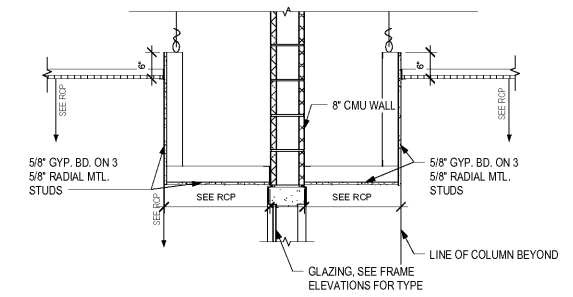
1 SOFFIT DETAIL
A-3.50 / 3/4" = 1'-0"



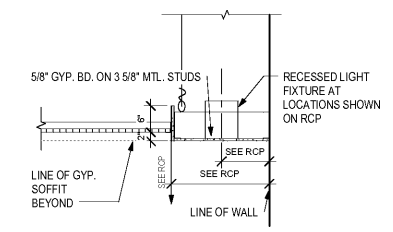
2 SOFFIT DETAIL
A-3.50 / 3/4" = 1'-0"



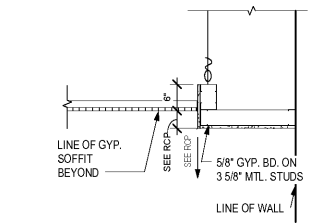
3 CEILING DETAIL
A-3.50 / 3/4" = 1'-0"



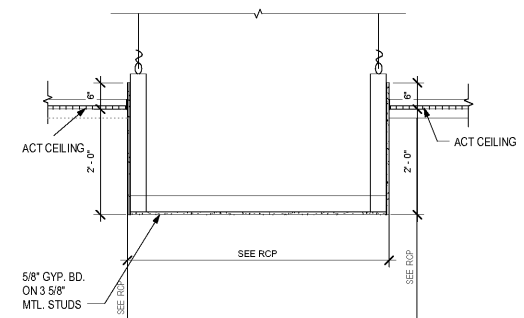
4 SOFFIT DETAIL
A-3.50 / 3/4" = 1'-0"



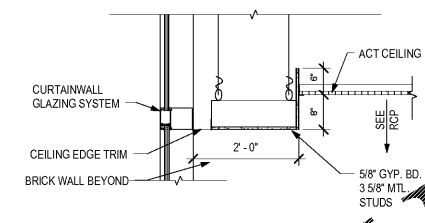
5 SOFFIT DETAIL
A-3.50 / 3/4" = 1'-0"



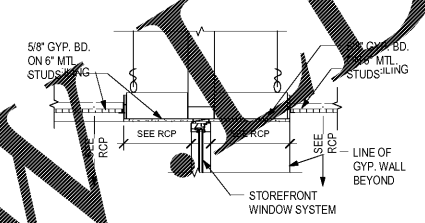
6 SOFFIT DETAIL
A-3.50 / 3/4" = 1'-0"



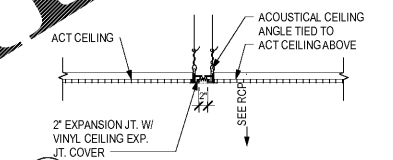
7 SOFFIT DETAIL
A-3.50 / 3/4" = 1'-0"



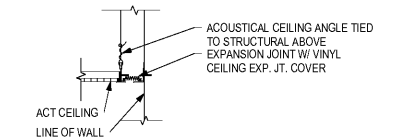
8 SOFFIT DETAIL
A-3.50 / 3/4" = 1'-0"



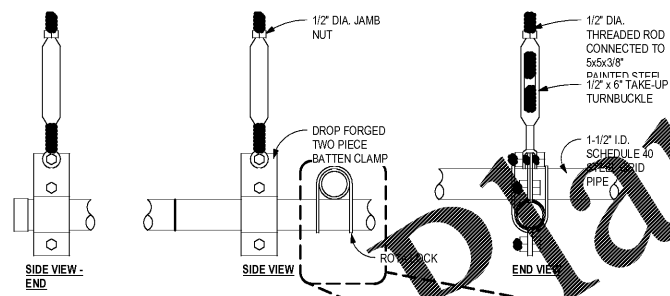
9 SOFFIT DETAIL
A-3.50 / 3/4" = 1'-0"



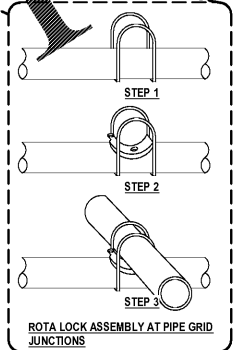
13 CEILING DETAIL @ EXPANSION JOINT
A-3.50 / 3/4" = 1'-0"



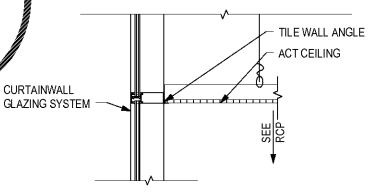
14 CEILING DETAIL @ EXPANSION JOINT
A-3.50 / 3/4" = 1'-0"



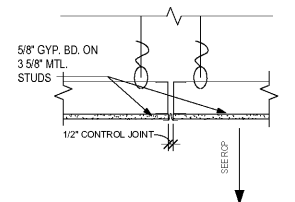
- INSTALLATION NOTES**
1. COMPLY WITH LOCAL CURRENT CODES.
 2. PIPE MOUNTING SYSTEM SHALL SUPPORT 100% LOAD CAPACITY PER 3\"/>



18 PIPE GRID MOUNTING AND SUPPORT DETAILS
A-3.50 / 3" = 1'-0"



19 CEILING DETAIL
A-3.50 / 3/4" = 1'-0"



20 CEILING DETAIL
A-3.50 / 1 1/2" = 1'-0"



CHAPMAN GRIFFIN LANIER ARCHITECTS
MEMBER IN CHARGE
2018
REGISTERED PROFESSIONAL ARCHITECT
STATE OF GEORGIA



DATE	NO.	DESCRIPTION
01/27/18		DOE FACILITY CODE 660-3086 DESIGN DEVELOPMENT
01/19/18		DOE FACILITY CODE 660-3086 CONSTRUCTION DOCUMENTS
01/17/18		DOE FACILITY CODE 660-3086 CHECK - SET / PERMIT SET
10/10/18		FINAL DOE SUBMITTAL ISSUED FOR PROPOSALS

DOE FACILITY CODE 660-3086
RIVERWOOD HIGH SCHOOL PHASE 3-8
AUDITORIUM/GYMNASIUM ADDITION
5900 RAIDER DRIVE NW SANDY SPRINGS, GA 30328
FULTON COUNTY SCHOOLS RFP NO. 411-19

PROJECT NO.	16015.02
DATE	09/17/18
DRAWN BY	Author
CHECKED BY	Checker

A-3.50