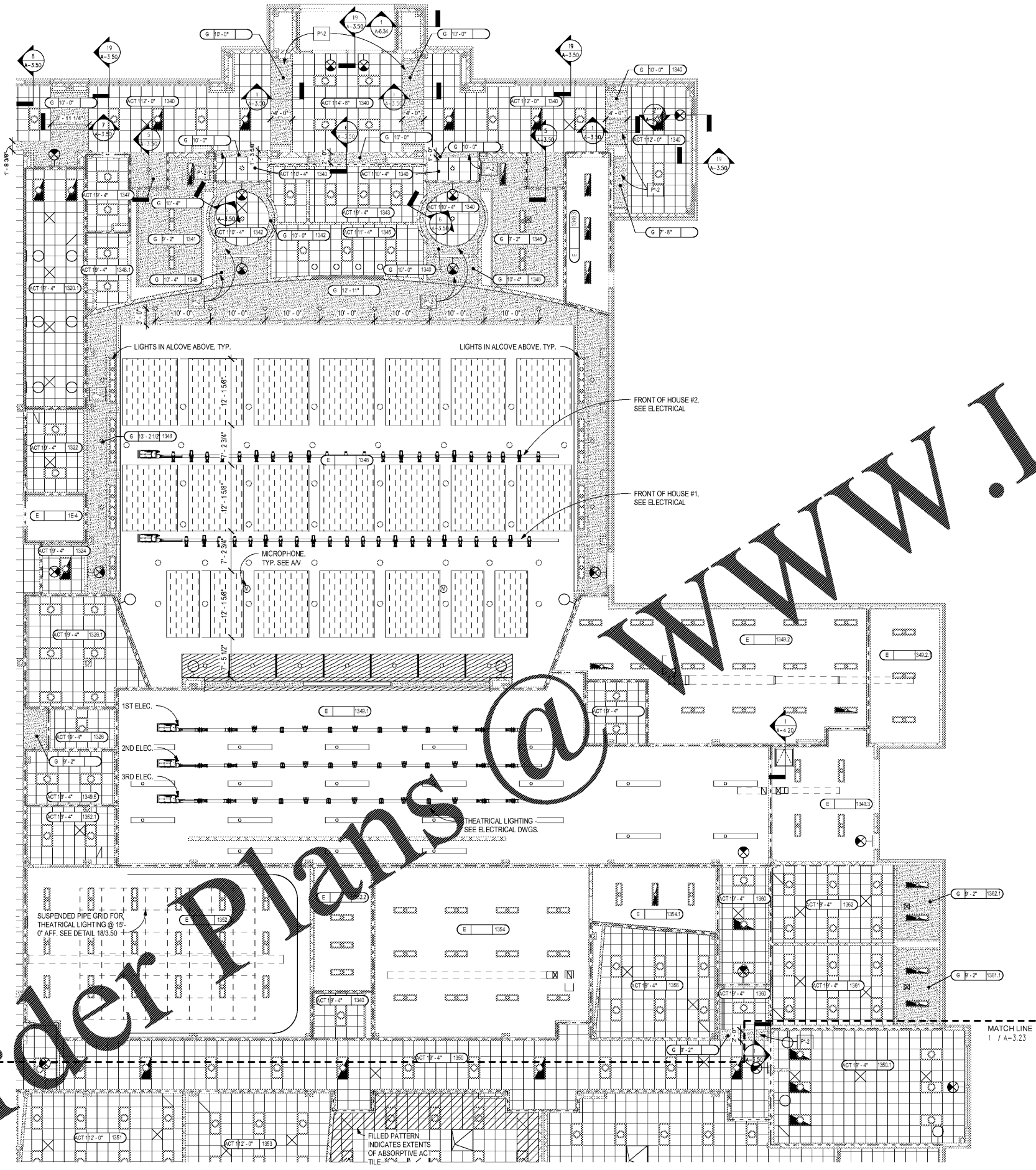


MATCH LINE
1 / A-3.21



1 LEVEL 100 REFLECTED CEILING PLAN - PART 4
A-3.24 1/8" = 1'-0"

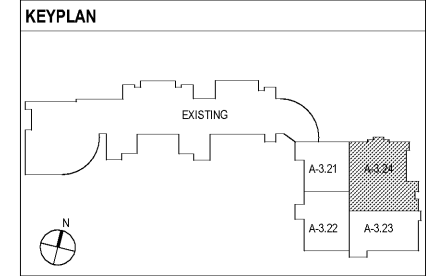
- RCP NOTES**
- REFER TO ELECTRICAL DRAWINGS FOR LIGHT FIXTURE SPECIFICATIONS.
 - ALL CEILING HEIGHTS ARE INDICATED AS NUMBER OF FEET ABOVE FINISH FLOOR ELEVATION OF ROOM OR SPACE UNLESS NOTED OTHERWISE.
 - PROVIDE ADDITIONAL SUPPORTS FOR FLEXIBLE CONDUITS AND FLEXIBLE DUCTS TO AVOID CONTACT WITH FINISH CEILING MATERIALS.
 - PROVIDE ADDITIONAL HANGER WIRE AT CORNER OF EACH LAY-IN LIGHT.
 - REFER TO REFLECTED CEILING PLAN LEGEND FOR ALL SYMBOLS. COORDINATE WITH MECHANICAL & ELECTRICAL DRAWINGS FOR ADDITIONAL SYMBOLS AND SCHEDULES.
 - CONTRACTOR SHALL VERIFY THE LOCATIONS OF SLOT DIFFUSERS, SUPPLY AND RETURN GRILLES AND COORDINATE WITH THE MECHANICAL CONTRACTOR.
 - CONTRACTORS SHALL VERIFY THAT LOCATION OF ALL LIGHT FIXTURES AND COORDINATE INSTALLATION WITH THE MECHANICAL AND ELECTRICAL CONTRACTORS. NOTIFY THE ARCHITECT OF ANY CONFLICTS PRIOR TO INSTALLATION.
 - PROVIDE 2" X 2" ACCESS PANELS AT VALVES AND CONTROLS EQUIPMENT LOCATED ABOVE HARD CEILINGS. SEE MEP DRAWINGS FOR LOCATIONS OF VALVES AND CONTROL EQUIPMENT.
 - LIGHTING, DIFFUSERS, SPRINKLERS, SPEAKERS, ETC. SHOWN ARE FOR LOCATION AND COORDINATION ONLY. SEE ENGINEER'S DOCUMENTS FOR FURTHER INFORMATION.
 - ALL CEILING GRID INSTALLATIONS SHALL HAVE THE CENTER TILE DIMENSIONED EQUALLY IN THE CENTER OF THE ROOM LOCATION UNLESS NOTED OTHERWISE.
 - ALL LINEAR DIFFUSERS SHALL HAVE FINISH TO MATCH PAINT COLOR / OR SPECIAL FINISH OF CEILING / WALL OF INSTALLATION.

RCP KEY

ACT	ACOUSTICAL TILE (NUMBER INDICATES TYPE) SEE FINISH NOTES.
G	GYPSUM BOARD, SAG RESISTANT
MCS	METAL CEILING SYSTEM
E	EXPOSED TO STRUCTURE
S	STUCCO ON METAL LATH
AL	PRE-MANUFACTURED ALUMINUM CANOPY
WD	WOOD

RCP LEGEND

[Symbol]	ACT CEILING TILE & GRID	[Symbol]	EMERGENCY EXHAUST FAN
[Symbol]	GYP BD CEILING	[Symbol]	2x4 FLUORESCENT LIGHT FIXTURE
[Symbol]	MCS CEILING TILE & GRID	[Symbol]	2x2 FLUORESCENT LIGHT FIXTURE
[Symbol]	AUDITORIUM SOUND DIFFUSER SYSTEM	[Symbol]	EMERGENCY LIGHT FIXTURE
[Symbol]	STUCCO	[Symbol]	SURFACE MOUNTED FLUORESCENT FIXTURE
[Symbol]	CEILING TYPE	[Symbol]	GYMNASIUM LIGHT FIXTURE
[Symbol]	CEILING HEIGHT	[Symbol]	RECESSED LIGHT FIXTURE
[Symbol]	ROOM NUMBER	[Symbol]	EXIT SIGN
[Symbol]	CEILING INFO TAG	[Symbol]	WALL MOUNTED LIGHT FIXTURE
[Symbol]	RETURN AIR HVAC DIFFUSER	[Symbol]	COVE LIGHTING
[Symbol]	SUPPLY AIR HVAC DIFFUSER		
[Symbol]	ELECTRIC HEATER		
[Symbol]	ACOUSTICAL DIFFUSER		



CHAPMAN GRIFFIN LANIER SUSSENBACH ARCHITECTS
 400 Galleria Pkwy., Suite 100 Atlanta, Ga 30339 Phone: 404.733.5493
 RIVERWOOD HIGH SCHOOL PHASE 3-8 AUDITORIUM/GYMNASIUM ADDITION
 5900 RAIDER DRIVE NW SANDY SPRINGS, GA 30328
 FULTON COUNTY SCHOOLS RFP NO. 411-19

CHAPMAN GRIFFIN LANIER SUSSENBACH ARCHITECTS INC.
 2018
 REGISTERED ARCHITECT
 STATE OF GEORGIA
 ARCHITECT
 11018

DATE	NO.	DESCRIPTION
01/27/18	001	PRELIMINARY SUBMITTAL DESIGN DEVELOPMENT
01/19/18	002	CONSTRUCTION DOCUMENTS
09/17/18	003	CODE CHECK - SET / PERMIT SET
10/10/18	004	FINAL GDC SUBMITTAL ISSUED FOR PROPOSALS

A-3.24

Order Plans @ www.LDOnline.com