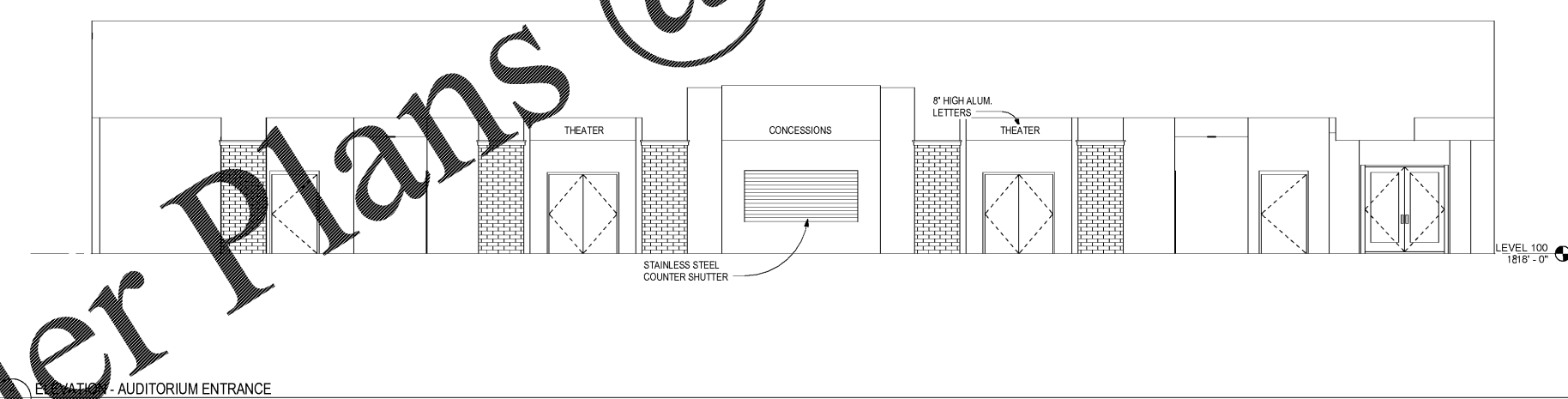
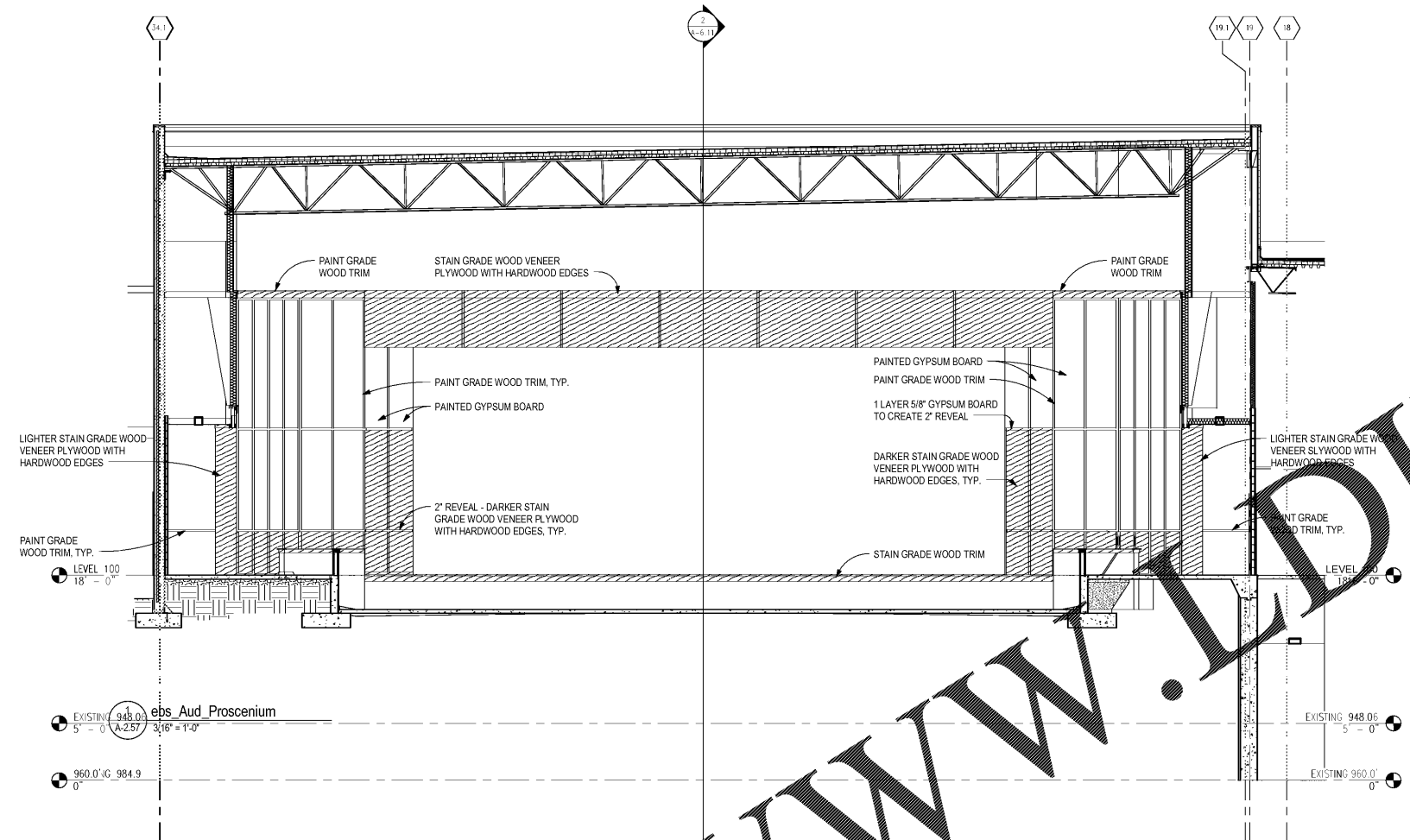




Order Plans @ www.LDILine.com



CHAPMAN GRIFFIN LANIER SUSSENBACH ARCHITECTS
 400 Galleria Pkwy., Suite 100 Atlanta, Ga 30339 Phone: 404.733.5493


CGLS ARCHITECTS
 CHAPMAN GRIFFIN LANIER SUSSENBACH ARCHITECTS INC.
 2018


 STATE OF GEORGIA
 ROBERT SUSSENBACH
 REGISTERED ARCHITECT

DATE	NO.	DESCRIPTION
01/27/18		SCHEMATIC SUBMITTAL
01/19/18		DESIGN DEVELOPMENT DOCUMENTS
09/17/18		SCHEMATIC SUBMITTAL
07/10/18		SCHEMATIC SUBMITTAL
11/01/18		ISSUED FOR PROPOSALS

DOE FACILITY CODE: 660-3086
RIVERWOOD HIGH SCHOOL PHASE 3-8 AUDITORIUM/GYMNASIUM ADDITION
 5900 RAIDER DRIVE NW SANDY SPRINGS, GA 30328
 FULTON COUNTY SCHOOLS RFP NO. 411-19

PROJECT NO. 16015.02
 DATE: 09/17/18
 DRAWN BY: Author
 CHECKED BY: Cracker

A-2.57