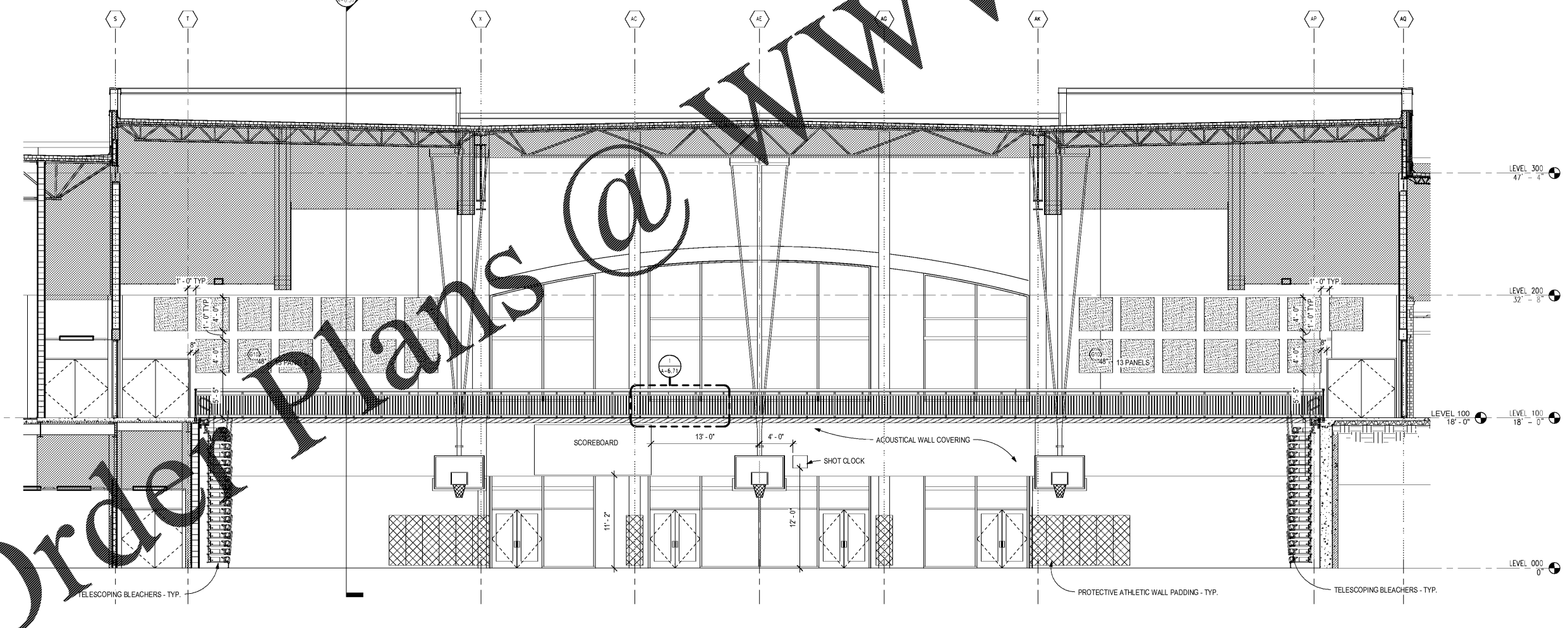


1 ELEVATION - MAIN GYM - SOUTH  
A-2.55 3/16" = 1'-0"



2 ELEVATION - MAIN GYM - WEST  
A-2.55 3/16" = 1'-0"

**CHAPMAN GRIFFIN LANIER SUSSENBACH ARCHITECTS**  
 400 Galleria Pkwy., Suite 100 Atlanta, Ga 30339 Phone: 404.733.5493

CHAPMAN GRIFFIN LANIER SUSSENBACH ARCHITECTS  
 CHAPMAN GRIFFIN LANIER SUSSENBACH ARCHITECTS INC.  
 2018  
 RELEASED FOR CONSTRUCTION

REGISTERED ARCHITECT

DATE	NO.	DESCRIPTION
01/27/18	001	PRELIMINARY SUBMITTAL DESIGN DEVELOPMENT
01/19/18	002	PRELIMINARY SUBMITTAL DESIGN DEVELOPMENT
01/17/18	003	PRELIMINARY SUBMITTAL DESIGN DEVELOPMENT
01/10/18	004	PRELIMINARY SUBMITTAL DESIGN DEVELOPMENT
1/01/18	005	FINAL GDC SUBMITTAL ISSUED FOR PROPOSAL

DOE FACILITY CODE: 660-3086  
**RIVERWOOD HIGH SCHOOL PHASE 3-8 AUDITORIUM/GYMNASIUM ADDITION**  
 5900 RAIDER DRIVE NW SANDY SPRINGS, GA 30328  
 FULTON COUNTY SCHOOLS RFP NO. 411-19

PROJECT NO. 16015.02  
 DATE: 09/17/18  
 DRAWN BY: Author  
 CHECKED BY: Cracker

A-2.55

Order Plans @ [www.LDOnline.com](http://www.LDOnline.com)