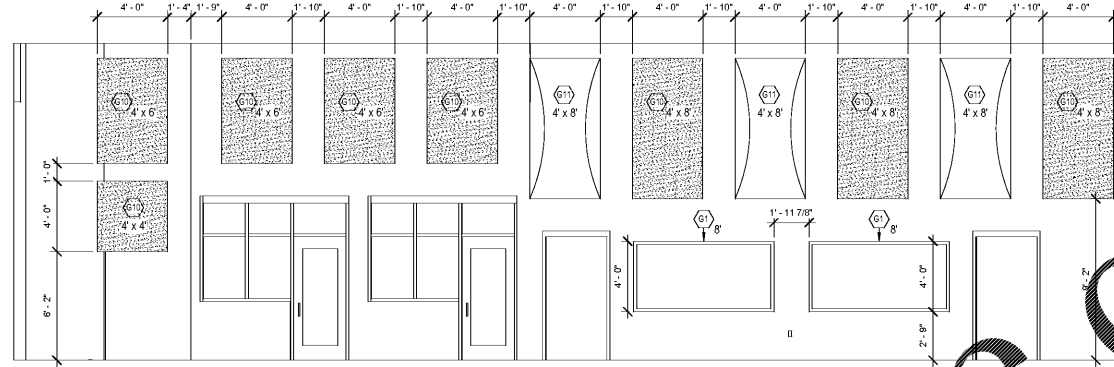
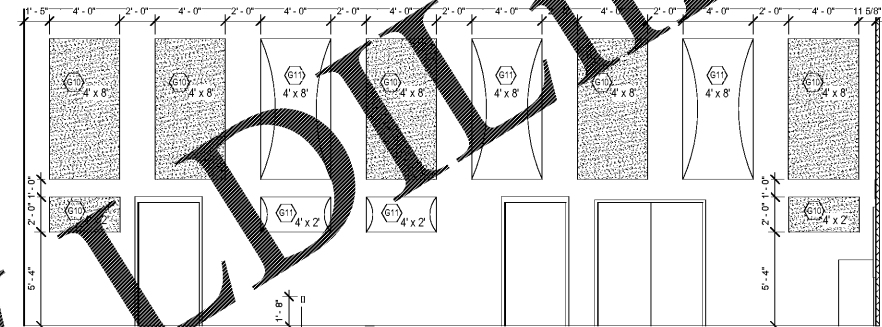


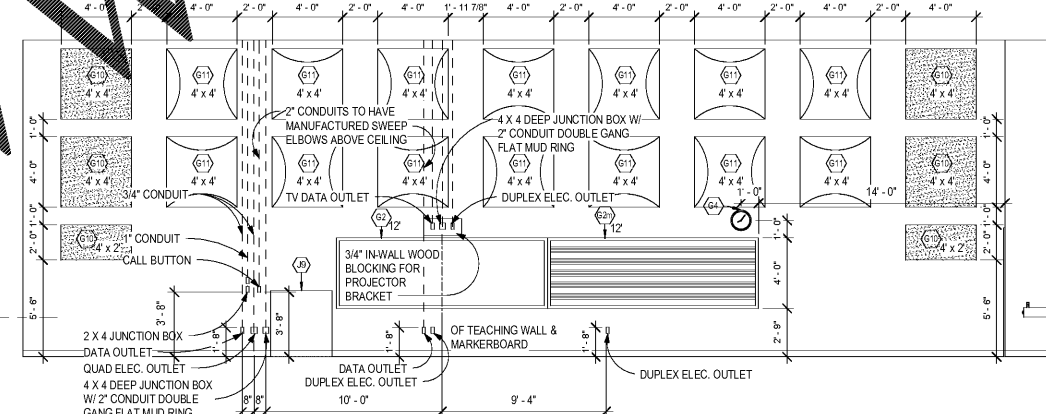
2 BAND REHEARSAL TEACHING WALL ELEVATION
A-2.53 1/4" = 1'-0"



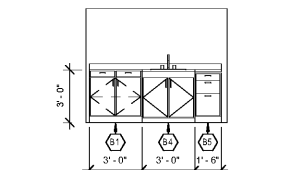
3 BAND REHEARSAL ELEVATION
A-2.53 1/4" = 1'-0"



4 BAND REHEARSAL ELEVATION
A-2.53 1/4" = 1'-0"



5 BAND REHEARSAL ELEVATION
A-2.53 1/4" = 1'-0"



6 BAND REHEARSAL - CASEWORK
A-2.53 1/4" = 1'-0"

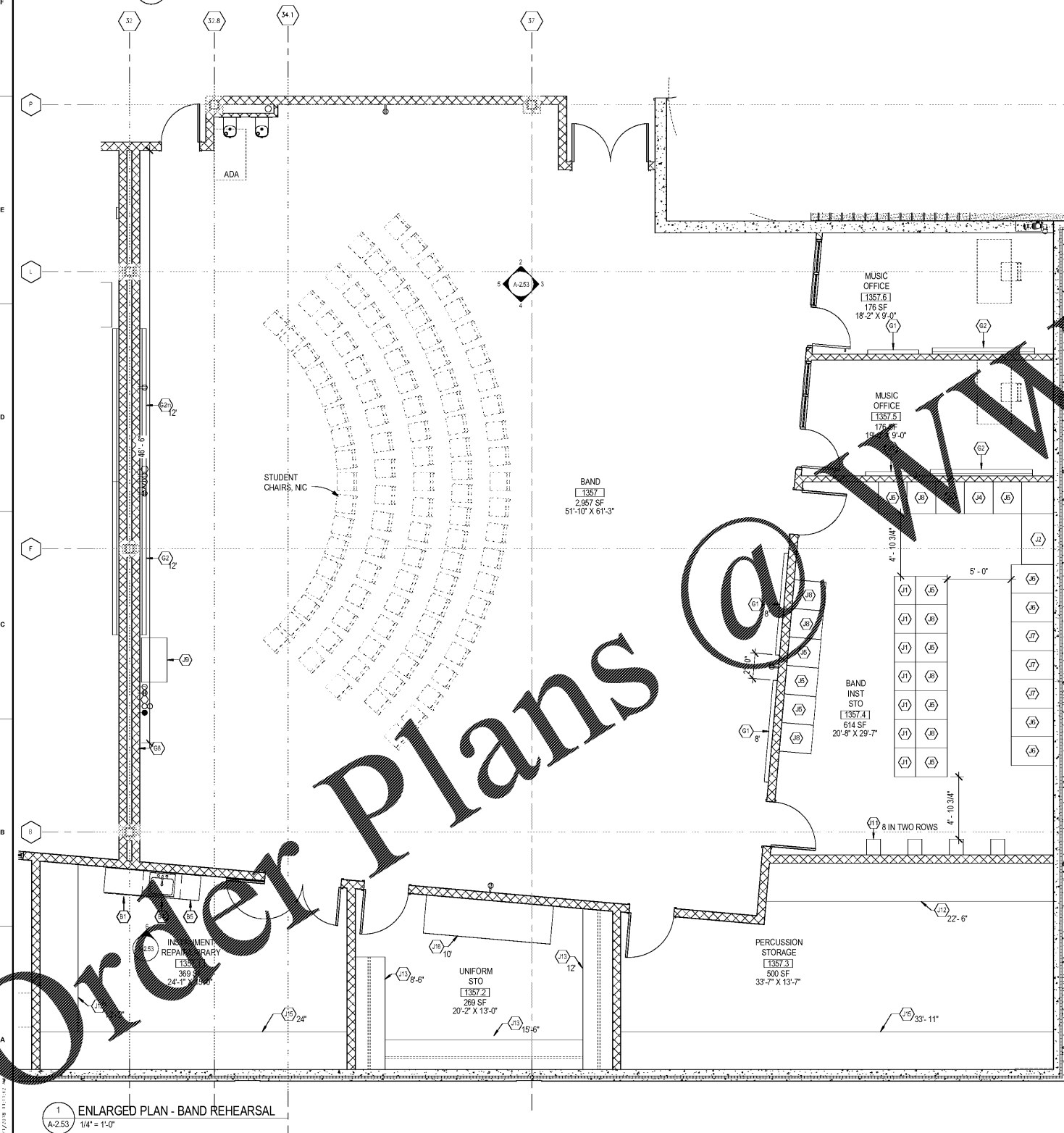
MUSIC CASEWORK (BASIS OF DESIGN - WENGER) SPEC. SEC. 12300
CABINETS MUST HAVE INDIVIDUAL DOORS FOR EACH COMPARTMENT. SINGLE DOOR NOT ACCEPTABLE.

ITEM	D X W X H	DESCRIPTION	COMMENTS	MODEL
J1	20 X 27 X 86	CABINET, 15 EQ. COMPARTMENTS	GRILL DOORS	#1
J2	30 X 48 X 86	CABINET, 2 COMPARTMENTS	GRILL DOORS	#12
J3	30 X 27 X 86	CABINET, 1 COMPARTMENT	GRILL DOORS	#8
J4	30 X 27 X 86	CABINET, 7 COMPARTMENTS	GRILL DOORS	#3
J5	30 X 27 X 86	CABINET, 3 COMPARTMENTS	GRILL DOORS	#10
J6	40 X 27 X 86	CABINET, 10 EQ. COMPARTMENTS	GRILL DOORS	#5
J7	40 X 27 X 86	CABINET, 3 EQ. COMPARTMENTS	GRILL DOORS	#11
J8	30 X 27 X 86	CABINET, 10 COMPARTMENTS	GRILL DOORS	#4
J9	42 X 24 X 45	PORTABLE STEREO CABINET	SOLID DOOR	STRO
J10	40 X 27 X 86	CABINET, 7 COMPARTMENTS	GRILL DOORS	#7
J11	15 X 15 X 27	SOUSAPHONE WALL-MTG BRACKET		049D100
J12		BUILT-IN WOOD SHELVING	SEE DET. 1/A-9.70	
J13		HANGING UNIFORM STORAGE	SEE DET. 2/A-9.70	
J14		HANGING UNIFORM STORAGE	SEE DET. 3/A-9.70	
J15		BUILT-IN WOOD SHELVING	SEE DET. 4/A-9.70	
J16		BUILT-IN WOOD SHELVING	SEE DET. 5/A-9.70	
J17		BUILT-IN WOOD SHELVING	J15 - NO CARPET	
J18	26 X 80 X 60	BASE RACK	148H004	
J19	29 X 73 X 47	CELLO RACK	148H002	
J20	30 X 48 X 86	ROBE/UNIFORM STORAGE		#383
J21	30 X 48 X 86	UNIFORM STORAGE		#384
J22	40 X 27 X 86	CABINET	2 COMPARTMENTS	#14

- TEACHING WALL NOTES:
- PROJECTOR BRACKET WILL BE INSTALLED (BY OWNER) 7" ABOVE TOP OF THE MARKERBOARD. INSTALL 3/4" FIRE RATED WOOD BLOCKING TO SPAN BETWEEN STUDS IN ALL GYP BOARD PARTITIONS AS INDICATED ON ELEVATION. PROVIDE A 1/2" CHAMFER ON ALL EDGES.
 - STUB OUT CONDUITS FOR PROJECTOR, DVD, AND USER INTERFACE ABOVE CEILING AS SHOWN. CONDUITS SHALL HAVE LONG SWEEP ELBOWS, PLASTIC BUSHINGS ON BOTH ENDS, FULL STRING, AND CLANK STAINLESS STEEL COVERS.
 - PROJECTOR SHALL BE CENTERED OVER THE MARKERBOARD AND WILL PROJECT DIRECTLY ONTO THE WHITE BOARD. THIS MAY NOT NECESSARILY BE THE CENTER OF THE CLASSROOM.
 - COORDINATE ELECTRICAL ROUGH IN WITH MARKERBOARD LOCATION. NO OUTLETS WILL BE ALLOWED IN CEILING TILES.

MISCELLANEOUS ACCESSORIES (MANUFACTURES VARIES)

G1	TACK BOARD, IN LENGTHS SHOWN		
G2	DRY MARKER BOARD, IN LENGTHS SHOWN	G2m	12" MUSIC MARKER BOARD W/STAFF LINES
G3	DISPLAY RAIL, IN LENGTHS SHOWN	G2s	12" HORIZ. SLIDING MARKER BOARD
G4	CLASSROOM CLOCK, NIC		
G5	CORRIDOR CLOCK		
G6	PROJECTION SCREEN	G6t	THEATER PROJECTION SCREEN 20' X 15'
		G6c	CAFETERIA PROJECTION SCREEN 10' X 10'
		G6m	MEDIA CENTER PROJECTION SCREEN 8' X 8'
G7	KEY BOX		
G8	FIRE EXTINGUISHER IN RECESSED CABINET		
G9	BRACKET MOUNTED FIRE EXTINGUISHER		
G10	SOUND ABSORBING PANEL		* WALL-MOUNTED SOUND ABSORBING PANEL (MOUNT @ 3'-6" A.F.F. UNLESS NOTED OTHERWISE)
G11	SOUND DIFFUSING PANEL		* WALL-MOUNTED SOUND DIFFUSING PANEL (MOUNT @ 3'-6" A.F.F. UNLESS NOTED OTHERWISE)
G12	TV / COMPONENT BRACKET		



1 ENLARGED PLAN - BAND REHEARSAL
A-2.53 1/4" = 1'-0"

CHAPMAN GRIFFIN LANIER SUSSENBACH ARCHITECTS
 400 Galleria Place, Suite 100 Atlanta, Ga 30339 Phone: 404.733.5493
 DOE FACILITY CODE: 660-3086
RIVERWOOD HIGH SCHOOL PHASE 3-B AUDITORIUM/GYMNASIUM ADDITION
 5900 RAIDER DRIVE NW SANDY SPRINGS, GA 30328
 FULTON COUNTY SCHOOLS RFP NO. 411-18
A-2.53

CHAPMAN GRIFFIN LANIER SUSSENBACH ARCHITECTS
 CHAPMAN GRIFFIN LANIER SUSSENBACH ARCHITECTS
 ARCHITECTS
 REGISTERED ARCHITECT
 STATE OF GEORGIA
 ARCHITECT NO. 10000
 REGISTERED ARCHITECT

DATE	NO.	DESCRIPTION
03/27/18		SCHEMATIC DESIGN DEVELOPMENT
06/19/18		SCHEMATIC DESIGN DEVELOPMENT
09/17/18		SCHEMATIC DESIGN DEVELOPMENT
10/18/18		SCHEMATIC DESIGN DEVELOPMENT
11/01/18		SCHEMATIC DESIGN DEVELOPMENT

PROJECT NO. 16015.02
 DATE: 09/17/18
 DRAWN BY: Author
 CHECKED BY: Checker
 ARCHITECT: