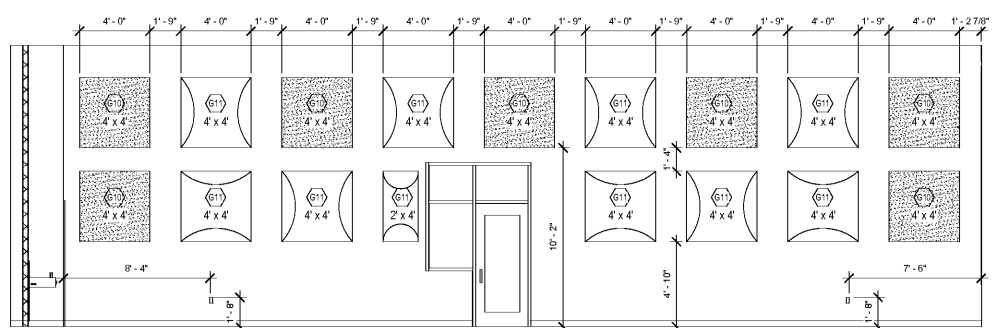
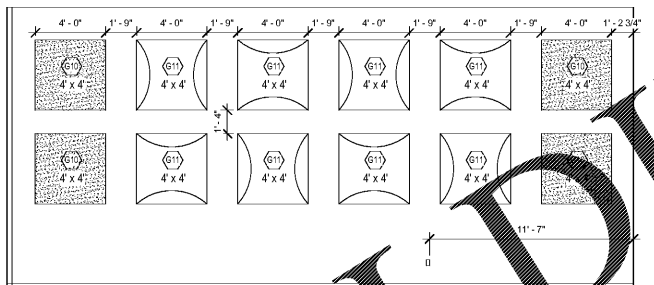


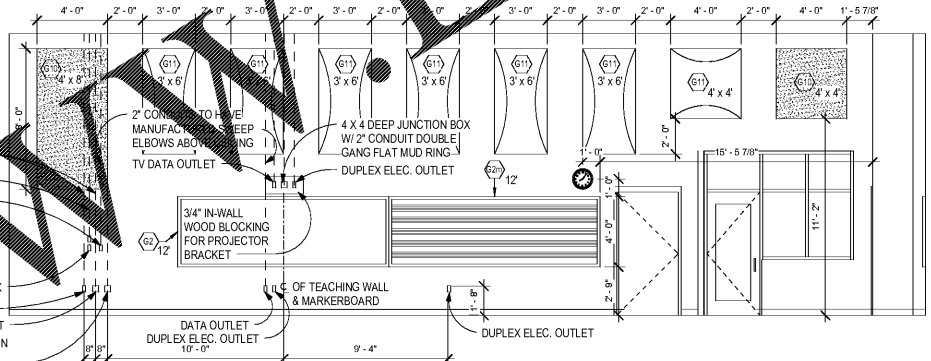
1 ENLARGED PLAN - CHORAL REHEARSAL
A-2.51 1/4" = 1'-0"



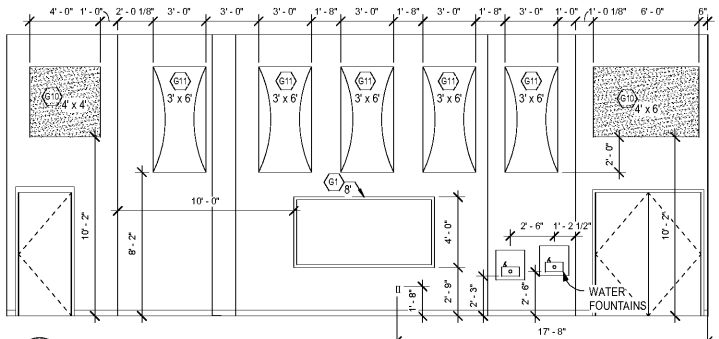
2 CHORAL REHEARSAL ELEVATION
A-2.51 1/4" = 1'-0"



3 CHORAL REHEARSAL ELEVATION
A-2.51 1/4" = 1'-0"



4 CHORAL REHEARSAL TEACHING WALL ELEVATION
A-2.51 1/4" = 1'-0"



5 CHORAL REHEARSAL ELEVATION
A-2.51 1/4" = 1'-0"

ITEM	D X W X H	DESCRIPTION	COMMENTS	MODEL
J1	20 X 27 X 86	CABINET, 15 COMPARTMENTS	GRILL DOORS	#1
J2	30 X 48 X 86	CABINET, 2 COMPARTMENTS	GRILL DOORS	#2
J3	30 X 27 X 86	CABINET, 2 COMPARTMENTS	GRILL DOORS	#3
J4	30 X 27 X 86	CABINET, 2 COMPARTMENTS	GRILL DOORS	#3
J5	30 X 27 X 86	CABINET, 3 COMPARTMENTS	GRILL DOORS	#10
J6	40 X 27 X 86	CABINET, 2 EQ. COMPARTMENTS	GRILL DOORS	#5
J7	40 X 27 X 86	CABINET, 2 EQ. COMPARTMENTS	GRILL DOORS	#11
J8	40 X 27 X 86	CABINET, 2 EQ. COMPARTMENTS	GRILL DOORS	#4
J9	48 X 24 X 45	PORTABLE 2-DOOR CABINET	STRO	#7
J10	48 X 24 X 45	CABINET, 7 COMPARTMENTS	SOLID DOOR	#7
J11	15 X 27	DISAPHONE WALL-MTG BRACKET		048D100
J12		BUILT-IN WOOD SHELVING	SEE DET. 1/A-9.70	
J13		HANGING UNIFORM STORAGE	SEE DET. 2/A-9.70	
J14		HANGING UNIFORM STORAGE	SEE DET. 3/A-9.70	
J15		BUILT-IN WOOD SHELVING	SEE DET. 4/A-9.70	
J16		BUILT-IN WOOD SHELVING	SEE DET. 5/A-9.70	
J17		BUILT-IN WOOD SHELVING	J15 - NO CARPET	
J18	26 X 80 X 60	BASE RACK	148H004	
J19	29 X 73 X 47	CELLO RACK	148H002	
J20	30 X 48 X 86	ROBUST UNIFORM STORAGE		#383
J21	30 X 48 X 86	UNIFORM STORAGE		#384
J22	40 X 27 X 86	CABINET	2 COMPARTMENTS	#14

ITEM	DESCRIPTION	COMMENTS	MODEL
G1	TACK BOARD, IN LENGTHS SHOWN		
G2	DRY MARKER BOARD, IN LENGTHS SHOWN		
G2m	12" MUSIC MARKER BOARD W/STAFF LINES		
G2c	12" HORIZ. SLIDING MARKER BOARD		
G3	DISPLAY RAIL, IN LENGTHS SHOWN		
G4	CLASSROOM CLOCK, NIC		
G5	CORRIDOR CLOCK		
G6	PROJECTION SCREEN		
G6r	THEATER PROJECTION SCREEN 20' X 15'		
G6c	CAFETERIA PROJECTION SCREEN 10' X 10'		
G6m	MEDIA CENTER PROJECTION SCREEN 8' X 8'		
G7	KEY BOX		
G8	FIRE EXTINGUISHER IN RECESSED CABINET		
G9	BRACKET MOUNTED FIRE EXTINGUISHER		
G10	SOUND ABSORBING PANEL		
G11	SOUND DIFFUSING PANEL		
G12	TV / COMPONENT BRACKET		

TEACHING WALL NOTES:

- PROJECTOR BRACKET WILL BE INSTALLED (BY OWNER) 7" ABOVE TOP OF THE MARKERBOARD. INSTALL 3/4" FIRE RATED WOOD BLOCKING TO SPAN BETWEEN STUDS IN ALL GYP BOARD PARTITIONS AS INDICATED ON ELEVATION. PROVIDE A 1/2" CHAMFER ON ALL EDGES.
- STUB OUT CONDUITS FOR PROJECTOR, DVD, AND USER INTERFACE ABOVE CEILING AS SHOWN. CONDUITS SHALL HAVE LONG SWEEP ELBOWS, PLASTIC BUSHINGS ON BOTH ENDS, FULL STRING, AND CLANK STAINLESS STEEL COVERS.
- PROJECTOR SHALL BE CENTERED OVER THE MARKERBOARD AND WILL PROJECT DIRECTLY ONTO THE WHITE BOARD. THIS MAY NOT NECESSARILY BE THE CENTER OF THE CLASSROOM.
- COORDINATE ELECTRICAL ROUGH IN WITH MARKERBOARD LOCATION. NO OUTLETS WILL BE ALLOWED IN CEILING TILES.

CHAPMAN GRIFFIN LANIER SUSSENBACH ARCHITECTS
400 Galleria Pkwy., Suite 100 Atlanta, Ga 30339 Phone: 404.733.5493

CHAPMAN GRIFFIN LANIER ARCHITECTS
MEMBER IN CHARGE
2018

RIVERWOOD HIGH SCHOOL PHASE 3-8
AUDITORIUM/GYMNASIUM ADDITION

5900 RAIDER DRIVE NW SANDY SPRINGS, GA 30328
FULTON COUNTY SCHOOLS RFP NO. 411-19

DATE	NO.	DESCRIPTION
03/27/18		SCHEMATIC DESIGN SUBMITTAL
04/19/18		SCHEMATIC DESIGN DEVELOPMENT
06/17/18		SCHEMATIC DESIGN DEVELOPMENT
07/17/18		SCHEMATIC DESIGN DEVELOPMENT
07/18/18		SCHEMATIC DESIGN DEVELOPMENT
07/18/18		SCHEMATIC DESIGN DEVELOPMENT

ENLARGED PLAN CHORAL REHEARSAL

A-2.51