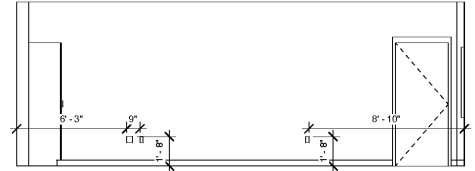
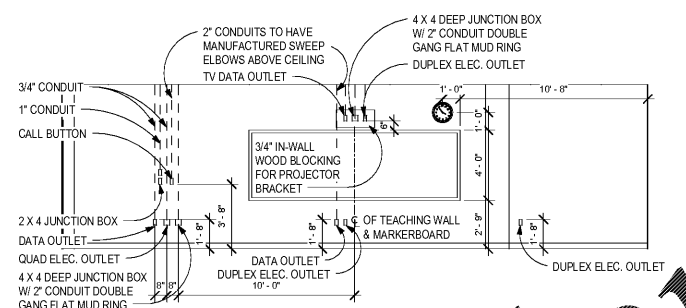


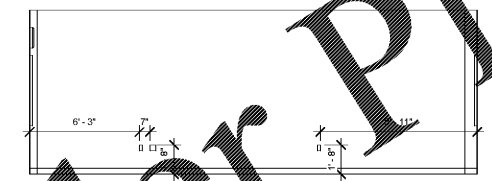
1 ENLARGED FLOOR PLAN - TYPICAL HEALTH CR  
A-2.50 1/4" = 1'-0"



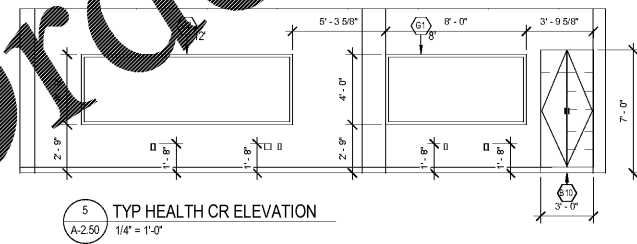
4 TYP HEALTH CR ELEVATION  
A-2.50 1/4" = 1'-0"



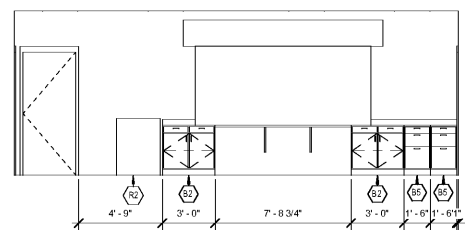
2 TYP HEALTH CR TEACHING WALL ELEVATION  
A-2.50 1/4" = 1'-0"



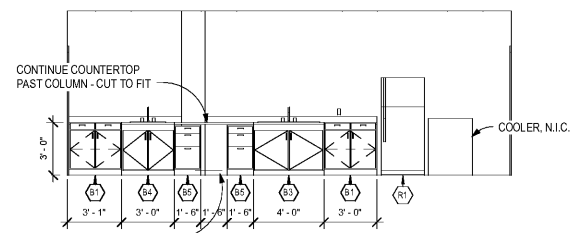
3 TYP HEALTH CR ELEVATION  
A-2.50 1/4" = 1'-0"



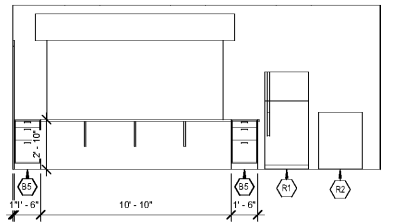
5 TYP HEALTH CR ELEVATION  
A-2.50 1/4" = 1'-0"



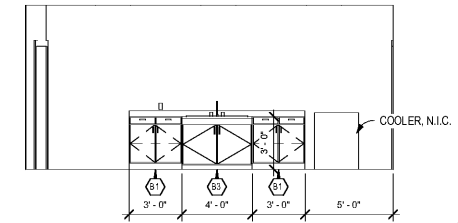
6 CASEWORK ELEVATION - GYM CONCESSION FRONT  
A-2.50 1/4" = 1'-0"



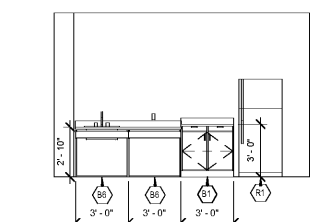
7 CASEWORK ELEVATION - GYM CONCESSION REAR  
A-2.50 1/4" = 1'-0"



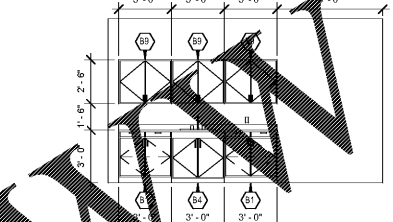
8 CASEWORK ELEVATION - AUD. CONCESSION FRONT  
A-2.50 1/4" = 1'-0"



9 CASEWORK ELEVATION - AUD. CONCESSION REAR  
A-2.50 1/4" = 1'-0"



10 CASEWORK ELEVATION - SPORTS MED  
A-2.50 1/4" = 1'-0"



11 CASEWORK ELEVATION - DRAMA STORAGE  
A-2.50 1/4" = 1'-0"

MANUFACTURED CASEWORK (BASIS OF DESIGN-TM) SPEC. SEC. 12310

ITEM	D X W X H	DESCRIPTION	COMMENTS	MODEL
B1	24 X 30 X 34	BASE CABINET	P. LAMINATE COUNTERTOP	D1123
B2	24 X 36 X 36	BASE CABINET	P. LAMINATE COUNTERTOP	D1123
B3	24 X 48 X 36	SINK BASE CABINET	P. LAMINATE COUNTERTOP	B2502
B3.1	24 X 48 X 36	SINK BASE CABINET	P. LAMINATE COUNTERTOP	B2502
B4	24 X 36 X 36	SINK BASE CABINET	P. LAMINATE COUNTERTOP	B2502
B5	24 X 18 X 34	DRAWER BASE CABINET	P. LAMINATE COUNTERTOP	D3003
B6	24 X 36 X 34	KNEE SPACE	ADA ACCESSIBLE	B2542
B7	24 X 15 X 24	COUNTER BRACKET	1/8" THICK	O090
B8	18 X 15 X 24	COUNTER BRACKET	1/8" THICK	O090
B9	14 X 36 X 30	WALL CABINET	FLUSH PANEL P. LAM DOORS	W2052
B10	30 X 36 X 84	WARDROBE CABINET	W/ KEYPED LOCK	T2592
B11	6 X 1.5 X 24	COUNTER BRACKET	1/8" THICK	O090

METAL STORAGE SHELVING SPEC. SEC. 10675

ITEM	D X W X H	DESCRIPTION
C1	18 X 36 X 84	METAL SHELVING UNIT
C2	24 X 36 X 84	METAL SHELVING UNIT
C3	12 X 36 X 84	METAL SHELVING UNIT
C4	24 X 48 X 84	METAL SHELVING UNIT
C5	40 X 48 X 31	STORAGE BIN (SEE ATHLETIC EQUIPMENT SPECIFICATION, 11-000)

MISCELLANEOUS ACCESSORIES (MANUFACTURES VARIES)

ITEM	DESCRIPTION
G1	TACK BOARD, IN LENGTHS SHOWN
G2	DRY MARKER BOARD, IN LENGTHS SHOWN
G3	DISPLAY RAIL, IN LENGTHS SHOWN
G4	CLASSROOM CLOCK
G5	CORRIDOR CLOCK
G6	PROJECTION SCREEN
G7	KEY BOARD
G8	FIRE EXTINGUISHER IN RECOMMENDED CABINET
G9	BRACKET INSTALLED FIRE EXTINGUISHER
G10	SOUND ABSORBING PANEL
G11	SOUND DIFFUSING PANEL
G12	TRUSS COMPONENT BRACKET

TEACHING WALL NOTES:

- PROJECTOR BRACKET WILL BE INSTALLED (BY OWNER) 7" ABOVE TOP OF THE MARKERBOARD. INSTALL 3/4" FIRE RATED WOOD BLOCKING TO SPAN BETWEEN STUDS IN ALL GYP BOARD PARTITIONS AS INDICATED ON ELEVATION. PROVIDE A 1/2" CHAMFER ON ALL EDGES.
- STUB OUT CONDUITS FOR PROJECTOR, DVD, AND USER INTERFACE ABOVE CEILING AS SHOWN. CONDUITS SHALL HAVE LONG SWEEP ELBOWS. PLASTIC BUSHINGS ON BOTH ENDS, FULL STRING, AND CLANK STAINLESS STEEL COVERS.
- PROJECTOR SHALL BE CENTERED OVER THE MARKERBOARD AND WILL PROJECT DIRECTLY ONTO THE WHITE BOARD. THIS MAY NOT NECESSARILY BE THE CENTER OF THE CLASSROOM.
- COORDINATE ELECTRICAL ROUGH IN WITH MARKERBOARD LOCATION. NO OUTLETS WILL BE ALLOWED IN CEILING TILES.

RESIDENTIAL APPLIANCES SPECS

ITEM	DESCRIPTION	QUANTITY
R1	REFRIGERATOR	11450
R2	ICE-MAKER	11450
R3	MICROWAVE	11450
R4	WHIRLPOOL HYDROTHERAPY TUB	11450
R5	RESIDENTIAL DISHWASHER	11450
R6	RESIDENTIAL WASHER W/PAN	11450
R7	RESIDENTIAL DRYER	11450
R8	COMMERCIAL WASHER	11110
R9	COMMERCIAL DRYER	11110
R10	RESIDENTIAL RANGE	11450
R11	GARBAGE DISPOSER	11450
R12	ADA DROP-IN RANGE	11450

Order Plans @ WWW.LDLINE.COM

CHAPMAN GRIFFIN LANIER SUSSENBACH ARCHITECTS  
400 Galleria Pkwy., Suite 100 Atlanta, Ga 30339 Phone: 404.733.5493

PROJECT NO. 16015.02  
DATE: 09/17/18  
DRAWN BY: Author  
CHECKED BY: Cracker

RESIDENTIAL APPLIANCES SPECS

DOE FACILITY CODE: 660-3086  
RIVERWOOD HIGH SCHOOL PHASE 3-B  
AUDITORIUM/GYMNASIUM ADDITION  
5900 RAEBER DRIVE NW SANDY SPRINGS, GA 30328  
FULTON COUNTY SCHOOLS RFP NO. 411-19

16015.02  
A-2.50