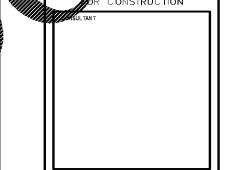




CHAPMAN GRIFFIN LANIER ARCHITECTS
 REGISTERED ARCHITECTS IN THE STATE OF GEORGIA
 RELEASED FOR CONSTRUCTION



DATE	NO.	DESCRIPTION
01/27/18	001	PRELIMINARY SUBMITTAL DESIGN DEVELOPMENT
01/19/18	002	PRELIMINARY SUBMITTAL DESIGN DEVELOPMENT
01/17/18	003	PRELIMINARY SUBMITTAL DESIGN DEVELOPMENT
01/10/18	004	PRELIMINARY SUBMITTAL DESIGN DEVELOPMENT
11/01/18	005	FINAL SUBMITTAL ISSUED FOR PROPOSALS

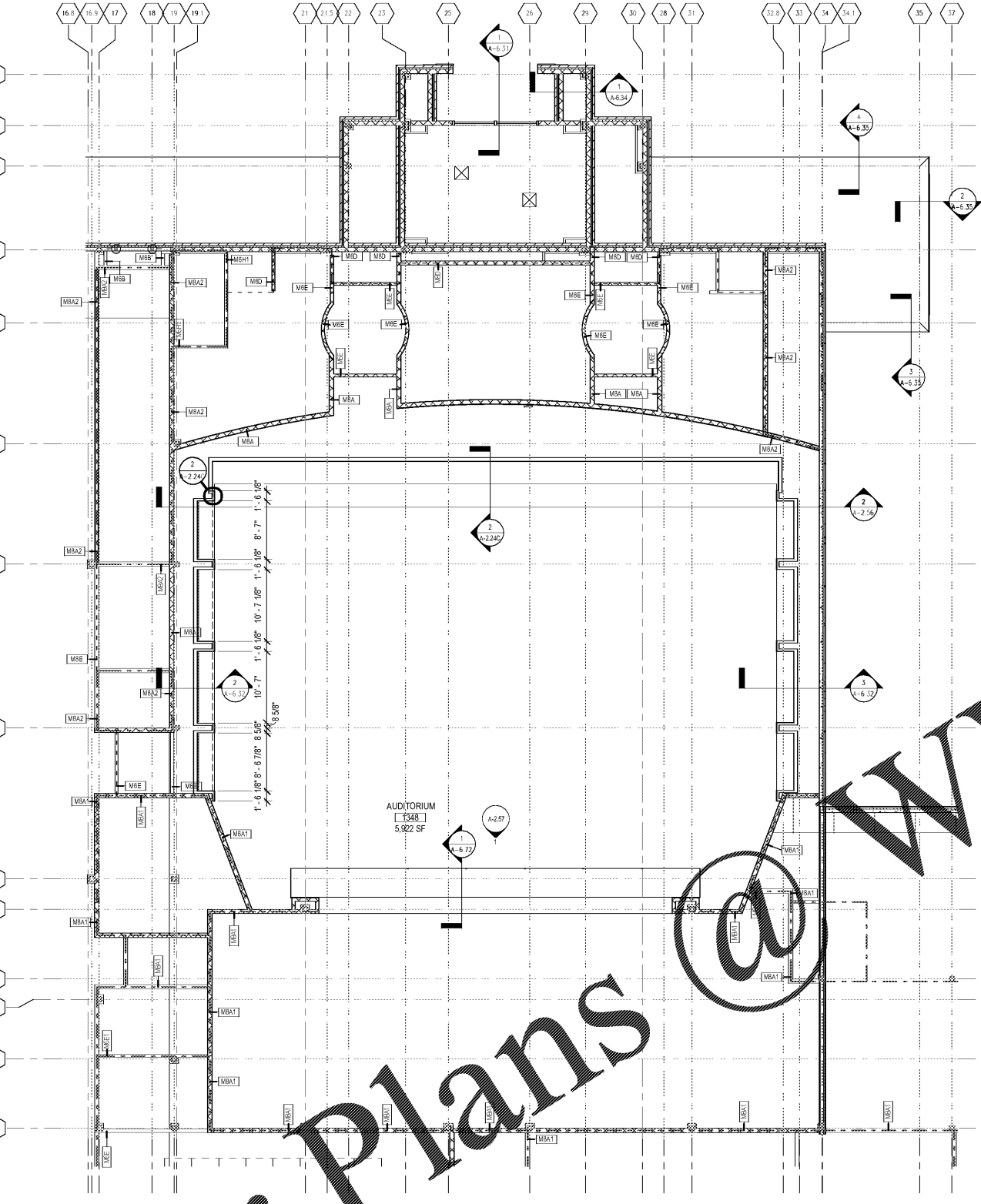
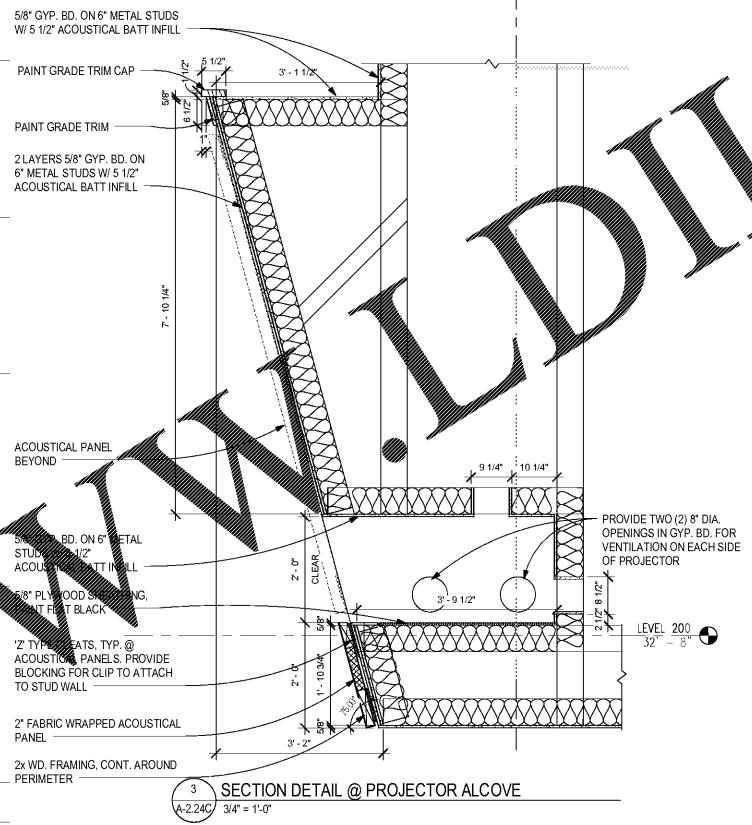
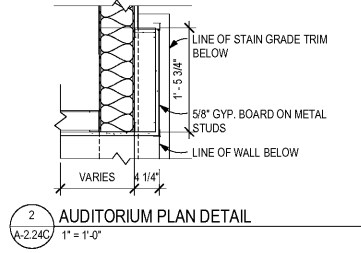
DATE	NO.	DESCRIPTION
01/27/18	001	PRELIMINARY SUBMITTAL DESIGN DEVELOPMENT
01/19/18	002	PRELIMINARY SUBMITTAL DESIGN DEVELOPMENT
01/17/18	003	PRELIMINARY SUBMITTAL DESIGN DEVELOPMENT
01/10/18	004	PRELIMINARY SUBMITTAL DESIGN DEVELOPMENT
11/01/18	005	FINAL SUBMITTAL ISSUED FOR PROPOSALS

DOE FACILITY CODE: 660-3066
 RIVERWOOD HIGH SCHOOL PHASE 3-8
 AUDITORIUM/GYMNASIUM ADDITION
 5900 RAIDER DRIVE NW SANDY SPRINGS, GA 30328
 FULTON COUNTY SCHOOLS RFP NO. 411-19

PROJECT NO. 16015.02
 DATE: 09/17/18
 DRAWN BY: Author
 CHECKED BY: Cracker

A-2.24C

CHAPMAN GRIFFIN LANIER SUSSENBACK ARCHITECTS
 400 Galleria Pkwy., Suite 100 Atlanta, Ga 30339 Phone: 404.733.5493



Order Plans @ www.LDILine.com