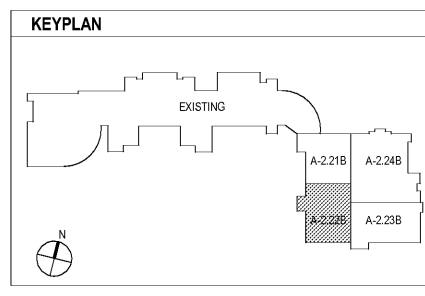
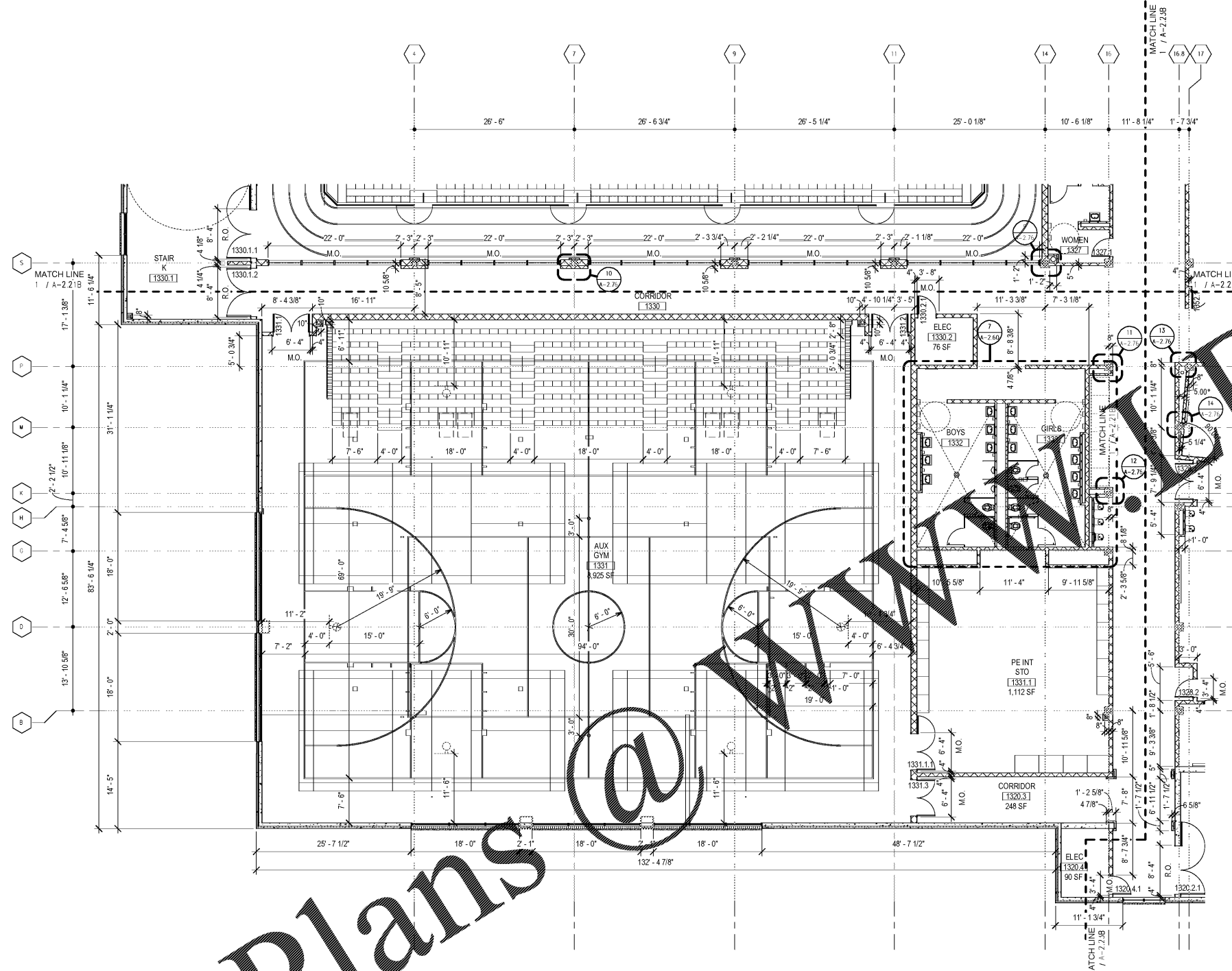


Order Plans @

1 LEVEL 100 DIMENSION PLAN - PART 2
A-2.22B 1/8" = 1'-0"



CHAPMAN GRIFFIN LANIER SUSSENBACH ARCHITECTS
 400 Galleria Pkwy., Suite 100 Atlanta, Ga 30339 Phone: 404.733.5493

CHAPMAN GRIFFIN LANIER SUSSENBACH ARCHITECTS
 REGISTERED ARCHITECTS
 STATE OF GEORGIA
 REGISTERED ARCHITECT

DATE	NO.	DESCRIPTION
01/27/18		CODE PRELIMINARY SUBMITTAL DESIGN DEVELOPMENT
01/19/18		SIZE CONSTRUCTION DOCUMENTS
01/17/18		CODE CHECK - SET / PERMIT SET
01/10/18		FINAL CODE SUBMITTAL ISSUED FOR PROPOSAL

RIVERWOOD HIGH SCHOOL PHASE 3-8 AUDITORIUM/GYMNASIUM ADDITION

5900 RAIDER DRIVE NW SANDY SPRINGS, GA 30328
 FULTON COUNTY SCHOOLS RFP NO. 411-19

PROJECT NO.	16015.02
DATE	09/17/18
DRAWN BY: Author	CHECKED BY: Cracker
A-2.22B	