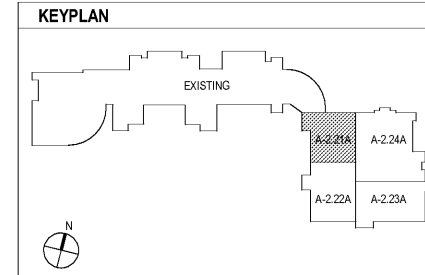


1 LEVEL 100 FLOOR PLAN - PART 1
A-2.21A 1/8" = 1'-0"

- PLAN NOTES**
- REFER TO CLASSROOM ENLARGEMENTS FOR TYPICAL CLASSROOM ACCESSORIES TO BE PROVIDED IN ALL CLASSROOMS.
 - FOR EXACT EXTERIOR CONTROL JOINTS AND DOWNSPOUT LOCATIONS SEE BUILDING ELEVATIONS. REFER TO TYPICAL CONTROL JOINT DETAILS ON SHEET A-1.12 COORDINATE WITH SPECIFICATIONS.
 - REFER TO SHEET A-1.10 & A-1.11 FOR PARTITION TYPES.
 - WALLS SURROUNDING A COLUMN, ADJACENT TO A LOCKER AND RESTROOM TOILET PARTITIONS SHALL BE PARTITION M4B-UNO.
 - REFER TO TYPICAL PLAN DETAILS FOR ALL FURRING ON COLUMNS & WALLS.
 - REFER TO SHEET A-8.22 FOR WINDOW FRAME ELEVATIONS.
 - REFER TO SHEET A-2.50 FOR CASEWORK, EQUIPMENT, & ACCESSORIES SCHEDULE.

- PLAN LEGEND**
- SMOKE PARTITION
 - 1 HR FIRE
 - 2 HR FIRE
 - 2 HR SMOKE WALL
 - MATCH LINE
 - ROOM NAME
 - ROOM TAG
 - DEPRESSED SLAB; SEE PLANS FOR DEPTH
 - SPOT ELEVATION
 - CONTROL JOINT
 - PARTITION TYPE
 - ACCESSORY & CASEWORK SYMBOL
 - WINDOW TYPE
 - MAGNETIC DOOR HOLD OPEN DEVICE
 - DOOR AND FRAME DESIGNATION; SEE DOOR SCHEDULE IN PROJECT MANUAL.



CHAPMAN GRIFFIN LANIER SUSSENBACH ARCHITECTS
 400 Galleria Pkwy., Suite 100 Atlanta, Ga 30339 Phone: 404.733.5493

CHAPMAN GRIFFIN LANIER SUSSENBACH ARCHITECTS
 REGISTERED ARCHITECTS IN THE STATE OF GEORGIA
 2018

RIVERWOOD HIGH SCHOOL PHASE 3-8
 AUDITORIUM/GYMNASIUM ADDITION
 5900 RAIDER DRIVE NW SANDY SPRINGS, GA 30328
 FULTON COUNTY SCHOOLS RFP NO. 411-19

DATE	NO.	DESCRIPTION
03/27/18		ISSUE PRELIMINARY SUBMITTAL DESIGN DEVELOPMENT
06/19/18		ISSUE CONSTRUCTION DOCUMENTS
09/17/18		ISSUE CHECK-SET/PERMIT SET
10/18/18		ISSUE FINAL GDC SUBMITTAL ISSUED FOR PROPOSALS
11/01/18		

LEVEL 100 FLOOR PLAN - PART 1
 PROJECT NO. 16015.02
 DATE: 09/17/18
 DRAWN BY: Author
 CHECKED BY: Cracker
A-2.21A

Order Plans @ www.wdwline.com