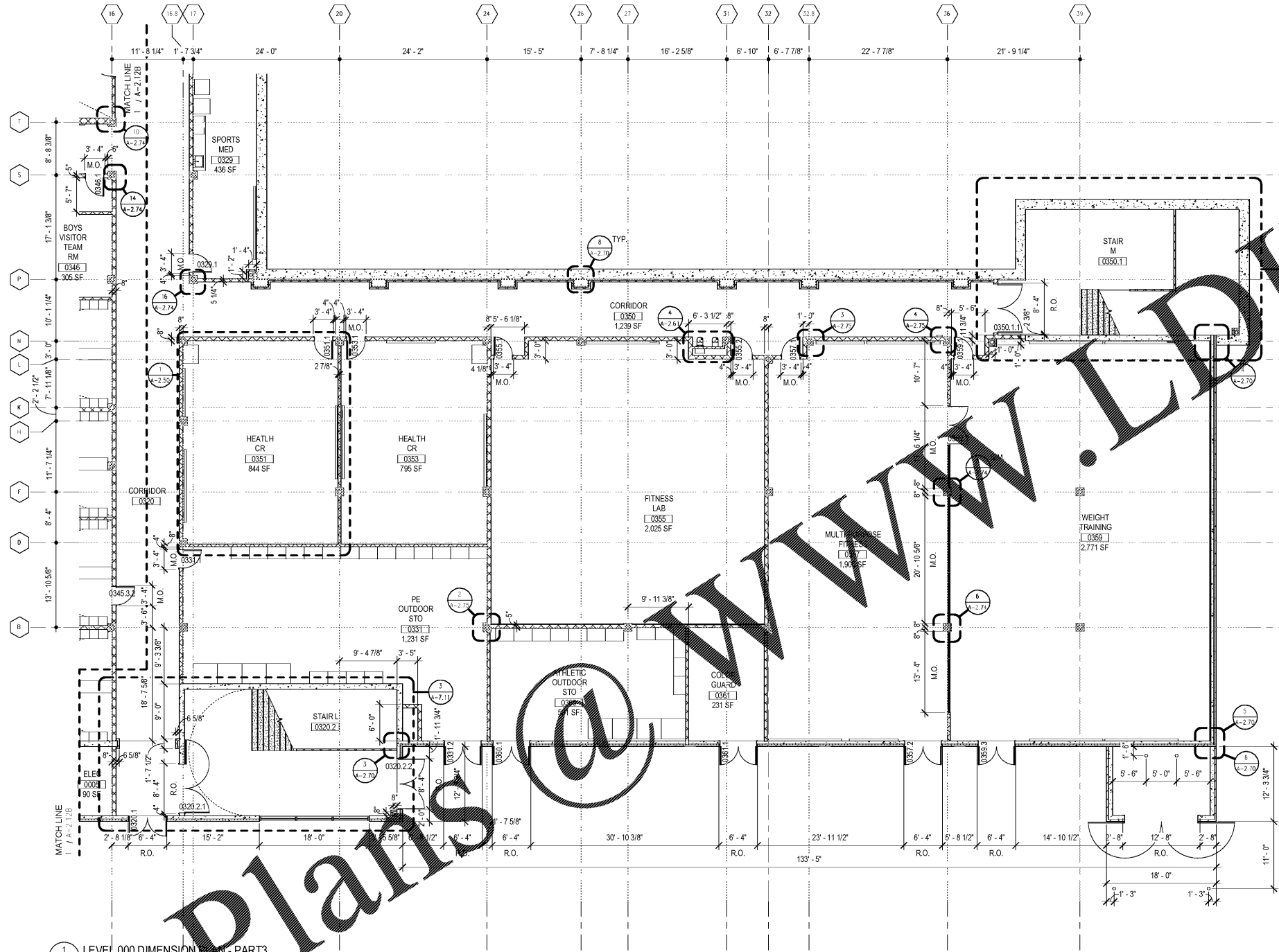
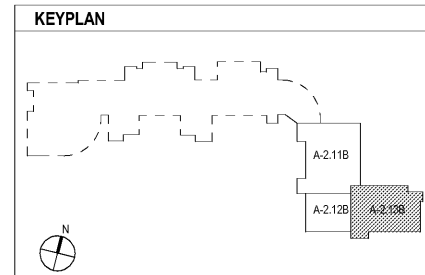



Order Plans @ WWW.LDLine.com




1 LEVEL 000 DIMENSION PLAN - PART 3
A-2.13B 1/8" = 1'-0"





CGLS ARCHITECTS
CHAPMAN GRIFFIN LANIER SUSENBACH ARCHITECTS
REGISTERED ARCHITECTS
2018



STATE OF GEORGIA
REGISTERED ARCHITECT
ROBERT SUSENBACH
LICENSE NO. 10000

| DATE | NO. | DESCRIPTION |
|----------|-----|--|
| 01/27/18 | | SCHEMATIC DESIGN SUBMITTAL |
| 01/19/18 | | SCHEMATIC DESIGN DEVELOPMENT |
| 01/17/18 | | SCHEMATIC DESIGN DOCUMENTS |
| 01/10/18 | | SCHEMATIC CHECK-SET/PERMIT SET |
| 11/01/18 | | FINAL SCHEMATIC SUBMITTAL ISSUED FOR PROPOSALS |

CHAPMAN GRIFFIN LANIER SUSENBACH ARCHITECTS
400 Galleria Pkwy., Suite 100 Atlanta, Ga 30339 Phone: 404.733.5493

RIVERWOOD HIGH SCHOOL PHASE 3-8 AUDITORIUM/GYMNASIUM ADDITION
5900 RAIDER DRIVE NW SANDY SPRINGS, GA 30328
FULTON COUNTY SCHOOLS RFP NO. 411-19

PROJECT NO. 16015.02
DATE 09/17/18
DRAWN BY: Author
CHECKED BY: Checker
SHEET NO. **A-2.13B**