

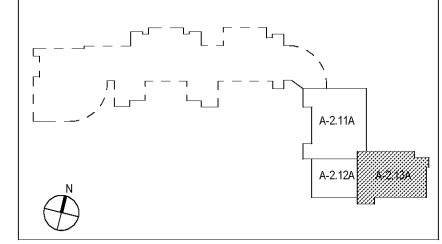
PLAN NOTES

1. REFER TO CLASSROOM ENLARGEMENTS FOR TYPICAL CLASSROOM ACCESSORIES TO BE PROVIDED IN ALL CLASSROOMS.
2. FOR EXACT EXTERIOR CONTROL JOINTS AND DOWNSPOUT LOCATIONS SEE BUILDING ELEVATIONS. REFER TO TYPICAL CONTROL JOINT DETAILS ON SHEET A-1.12 COORDINATE WITH SPECIFICATIONS.
3. REFER TO SHEET A-1.10 & A-1.11 FOR PARTITION TYPES.
4. WALLS SURROUNDING A COLUMN, ADJACENT TO A LOCKER AND RESTROOM TOILET PARTITIONS SHALL BE PARTITION M4B-UNO.
5. REFER TO TYPICAL PLAN DETAILS FOR ALL FURRING ON COLUMNS & WALLS.
6. REFER TO SHEET A-8.22 FOR WINDOW FRAME ELEVATIONS.
7. REFER TO SHEET A-2.50 FOR CASEWORK, EQUIPMENT, & ACCESSORIES SCHEDULE.

PLAN LEGEND

---	SMOKE PARTITION	●	SPOT ELEVATION
---	1 HR FIRE	CJ	CONTROL JOINT
---	2 HR FIRE	M4B/S	PARTITION TYPE
---	2 HR SMOKE WALL	GA	ACCESSORY & CASEWORK SYMBOL
MATCHLINE		A	WINDOW TYPE
XXXX-XXX	SHEET NUMBER FOR PLAN CONTINUATION	MD	MAGNETIC DOOR HOLD OPEN DEVICE
ROOM NAME	ROOM TAG	1000	DOOR AND FRAME DESIGNATION, SEE DOOR SCHEDULE IN PROJECT MANUAL.
1,100			
150 SF			
12'-0" x 8'-0"			
DEPRESSED SLAB, SEE PLANS FOR DEPTH			

KEYPLAN



CGLS ARCHITECTS
CHAPMAN GRIFFIN LANIER SUSENBACH ARCHITECTS INC.
MEMBER AIA

RELEASED FOR CONSTRUCTION

DATE	NO.	DESCRIPTION
03/27/18		SCHE PRELIMINARY SUBMITTAL DESIGN DEVELOPMENT
06/19/18		SCHE CONSTRUCTION DOCUMENTS
09/17/18		SCHE CHECK-SET/PERMIT SET
10/10/18		FINAL SCHE SUBMITTAL ISSUED FOR PROPOSAL
11/01/18		

RIVERWOOD HIGH SCHOOL PHASE 3-8 AUDITORIUM/GYMNASIUM ADDITION

5900 RAIDER DRIVE NW SANDY SPRINGS, GA 30328
FULTON COUNTY SCHOOLS RFP NO. 411-19

CHAPMAN GRIFFIN LANIER SUSENBACH ARCHITECTS
400 Galleria Pkwy., Suite 100 Atlanta, Ga 30339 Phone: 404.733.5493

PROJECT NO.	16015.02
DATE	09/17/18
DRAWN BY	Author
CHECKED BY	Cracker
SHEET NO.	A-2.13A

Order Plans @ WWW.ArchLine.com

1 LEVEL 000 FLOOR PLAN - PART 3
A-2.13A 8" = 1'-0"