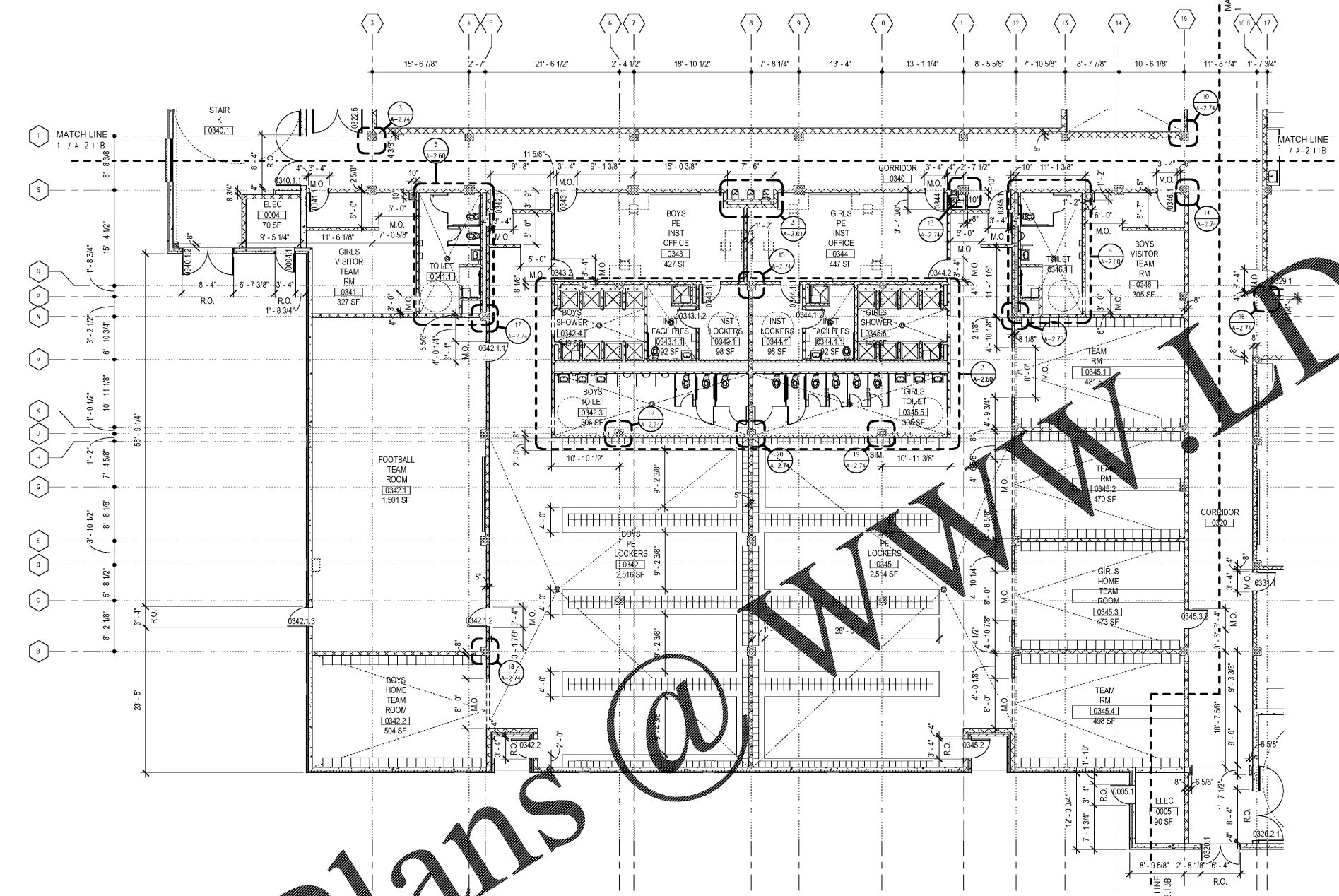
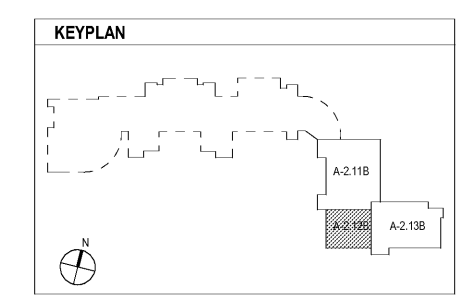


Order Plans @ www.wldline.com



1 LEVEL 000 DIMENSION PLAN - PART 2
A-2.12B 1/8" = 1'-0"



CHAPMAN GRIFFIN LANIER SUSSENBACH ARCHITECTS
 400 Galleria Pkwy., Suite 100 Atlanta, Ga 30339 Phone: 404.733.5493
 5900 RAIDER DRIVE NW SANDY SPRINGS, GA 30328
 FULTON COUNTY SCHOOLS RFP NO. 411-19

CHAPMAN GRIFFIN LANIER SUSSENBACH ARCHITECTS INC.
REGISTERED ARCHITECTS
2018

RELEASED FOR CONSTRUCTION

DATE	NO.	DESCRIPTION
03/27/18		SCHE PRELIMINARY SUBMITTAL DESIGN DEVELOPMENT
06/19/18		SCHE PRELIMINARY SUBMITTAL DESIGN DEVELOPMENT
09/17/18		SCHE PRELIMINARY SUBMITTAL DESIGN DEVELOPMENT
10/10/18		SCHE CHECK-SET/PERMIT SET
11/01/18		FINAL SCHE SUBMITTAL ISSUED FOR PROPOSALS

LEVEL 000 DIMENSION PLAN - PART 2

PROJECT NO. 16015.02

DATE 09/17/18

DRAWN BY: Author
CHECKED BY: Cracker

A-2.12B