



CHAPMAN GRIFFIN LANIER SUSENBACH ARCHITECTS
 REGISTERED ARCHITECT
 RELEASED FOR CONSTRUCTION



DATE	NO.	DESCRIPTION
01/27/18		SCHE PRELIMINARY SUBMITTAL DESIGN DEVELOPMENT
01/19/18		SCHE PRELIMINARY SUBMITTAL DESIGN DEVELOPMENT
01/17/18		SCHE PRELIMINARY SUBMITTAL DESIGN DEVELOPMENT
01/10/18		SCHE PRELIMINARY SUBMITTAL DESIGN DEVELOPMENT
01/01/18		SCHE PRELIMINARY SUBMITTAL DESIGN DEVELOPMENT

DOE FACILITY CODE: 660-3066
 RIVERWOOD HIGH SCHOOL PHASE 3-B
 AUDITORIUM/GYMNASIUM ADDITION
 5900 RAIDER DRIVE NW SANDY SPRINGS, GA 30328
 FULTON COUNTY SCHOOLS RFP NO. 411-19

CHAPMAN GRIFFIN LANIER SUSENBACH ARCHITECTS
 400 Galleria Plaza, Suite 100 Atlanta, Ga 30339 Phone: 404.733.5493

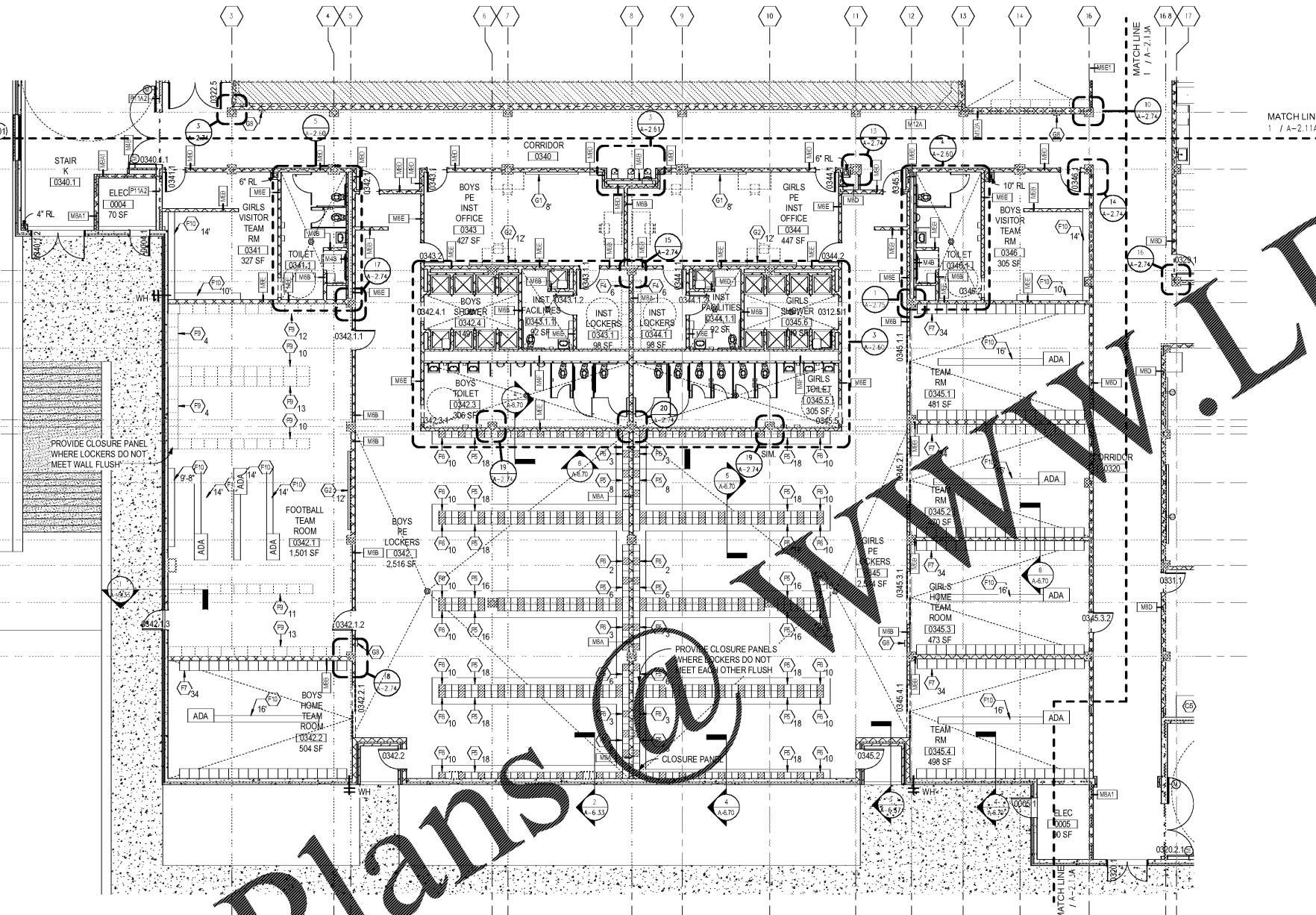
LEVEL 000 FLOOR PLAN - PART 2

16015.02

09/17/18

Author
 Checker

A-2.12A



1 LEVEL 000 FLOOR PLAN - PART 2
 A-2.12a 1/8" = 1'-0"

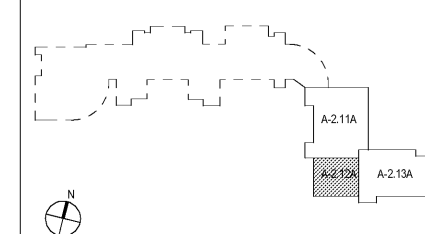
PLAN NOTES

- REFER TO CLASSROOM ENLARGEMENTS FOR TYPICAL CLASSROOM ACCESSORIES TO BE PROVIDED IN ALL CLASSROOMS.
- FOR EXACT EXTERIOR CONTROL JOINTS AND DOWNSPOUT LOCATIONS SEE BUILDING ELEVATIONS. REFER TO TYPICAL CONTROL JOINT DETAILS ON SHEET A-1.12 COORDINATE WITH SPECIFICATIONS.
- REFER TO SHEET A-1.10 & A-1.11 FOR PARTITION TYPES.
- WALLS SURROUNDING A COLUMN ADJACENT TO A LOCKER AND RESTROOM TOILET PARTITIONS SHALL BE PARTITION MMB-LINO.
- REFER TO TYPICAL PLAN DETAILS FOR ALL FURRING ON COLUMNS & WALLS.
- REFER TO SHEET A-8.22 FOR WINDOW FRAME ELEVATIONS.
- REFER TO SHEET A-2.50 FOR CASEWORK, EQUIPMENT, & ACCESSORIES SCHEDULE.

PLAN LEGEND

---	SMOKE PARTITION	●	SPOT ELEVATION
---	1 HR FIRE	CJ	CONTROL JOINT
---	2 HR FIRE	MBS	PARTITION TYPE
---	2 HR SMOKE WALL	MB	ACCESSORY & CASEWORK SYMBOL
MATCH LINE		W	WINDOW TYPE
XXXX-XXXX	SHEET NUMBER FOR PLAN CONTINUATION	MD	MAGNETIC DOOR HOLD OPEN DEVICE
ROOM NAME	ROOM TAG	1000	DOOR AND FRAME DESIGNATION. SEE DOOR SCHEDULE IN PROJECT MANUAL.
150 SF			
12'-0" x 8'-0"	DEPRESSED SLAB; SEE PLANS FOR DEPTH		

KEYPLAN



ITEM	D X W X H	DESCRIPTION
F1	12 X 12 X 72	DOUBLE TIER STUDENT. SEE 2/A-6.70 FOR BASE DETAIL
F2	15 X 12 X 72	SINGLE TIER CUSTODIAL STAFF LOCKERS. SEE 1/A-6.70 FOR BASE DETAIL
F3		NOT USED
F4	15 X 21 X 72	SINGLE TIER P.E. STAFF LOCKERS. SEE 1/A-6.70 FOR DETAIL
F5	12 X 12 X 60	FIVE TIER PERFORATED P.E. LOCKERS. SEE A-6.70 FOR BASE DETAIL
F6	12 X 12 X 60	DOUBLE TIER PERFORATED P.E. LOCKERS. SEE A-6.70 FOR BASE DETAIL
F7	18 X 18 X 72	SINGLE TIER PERFORATED ATHLETIC LOCKERS. SEE 7/A-6.70 FOR BASE DETAIL
F8		NOT USED
F9	18 X 24 X 72	SINGLE TIER PERFORATED FOOTBALL LOCKERS. SEE 7/A-6.70 FOR BASE DETAIL
F10		LOCKER BENCH

Order Plans @ WWW.LDILine.com