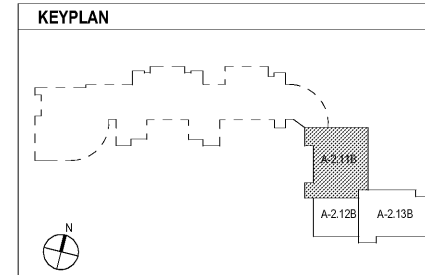




1 LEVEL 000 DIMENSION PLAN - PART 1
A-2.11B 1/8" = 1'-0"





CHAPMAN GRIFFIN LANIER SUSENBACH ARCHITECTS
400 Galleria Pkwy., Suite 100 Atlanta, Ga 30339 Phone: 404.733.5493



DATE	NO.	DESCRIPTION
01/27/18		CODE PRELIMINARY SUBMITTAL DESIGN DEVELOPMENT
01/19/18		CODE PRELIMINARY SUBMITTAL DESIGN DEVELOPMENT
01/17/18		CODE CHECK - SET/ PERMIT SET
01/10/18		FINAL CODE SUBMITTAL ISSUED FOR PROPOSAL

RIVERWOOD HIGH SCHOOL PHASE 3-8 AUDITORIUM/GYMNASIUM ADDITION

5900 RAIDER DRIVE NW SANDY SPRINGS, GA 30328
FULTON COUNTY SCHOOLS RFP NO. 411-19

LEVEL 000 DIMENSION PLAN - PART 1

PROJECT NO. 16015.02
DATE: 09/17/18
DRAWN BY: Author
CHECKED BY: Checker
REVISED BY:

A-2.11B