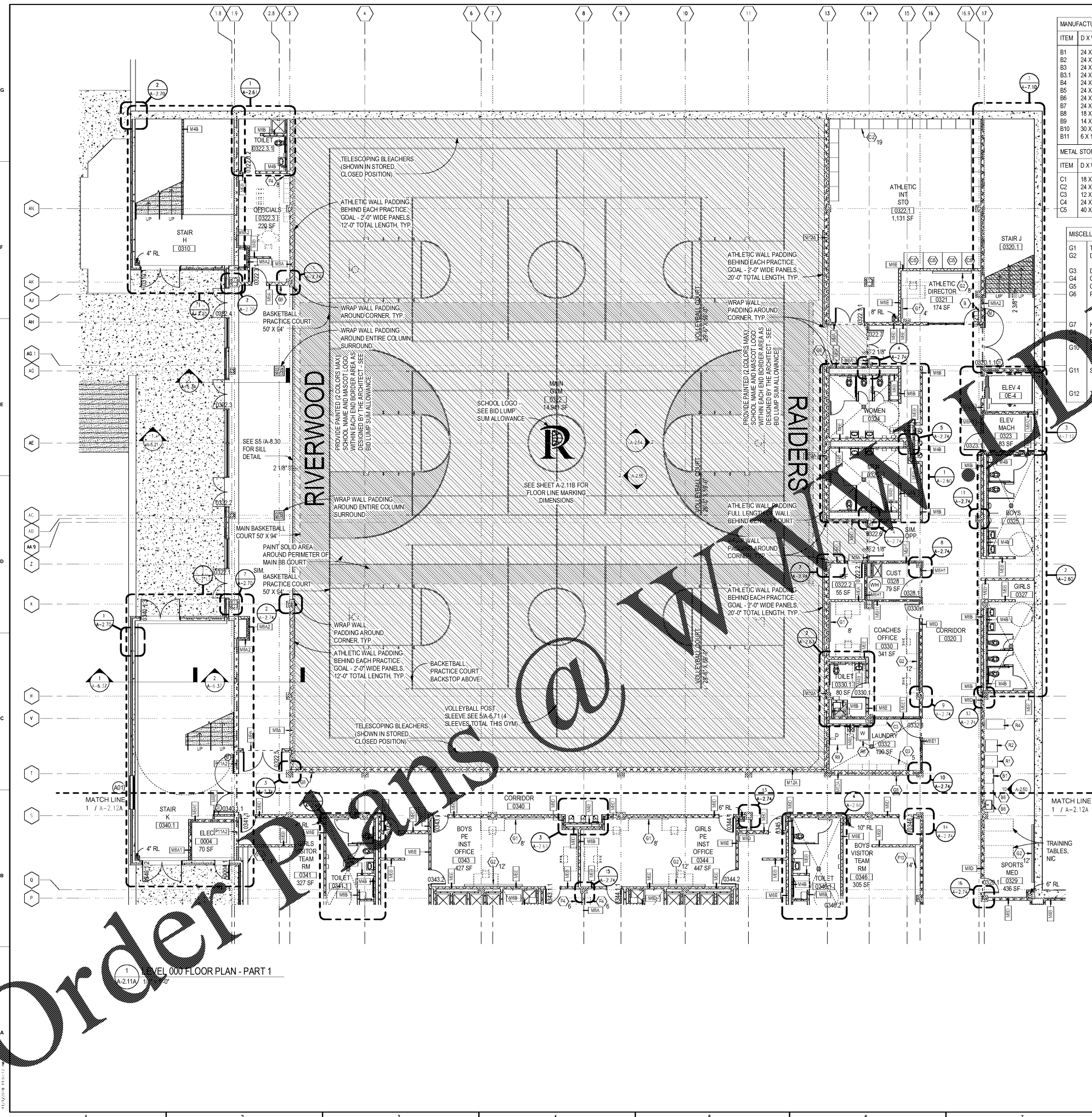


Order Plans @ www.a2line.com



ITEM	D X W X H	DESCRIPTION	COMMENTS	MODEL
B1	24 X 30 X 34	BASE CABINET	P. LAMINATE COUNTERTOP	D1123
B2	24 X 36 X 36	BASE CABINET	P. LAMINATE COUNTERTOP	D1123
B3	24 X 48 X 36	SINK BASE CABINET	P. LAMINATE COUNTERTOP	B2502
B3.1	24 X 48 X 36	SINK BASE CABINET	P. LAMINATE COUNTERTOP	B2502
B4	24 X 36 X 36	SINK BASE CABINET	P. LAMINATE COUNTERTOP	B2502
B5	24 X 18 X 34	DRAWER BASE CABINET	P. LAMINATE COUNTERTOP	D0003
B6	24 X 36 X 34	KNEE SPACE	ADA ACCESSIBLE	B2542
B7	24 X 1.5 X 24	COUNTER BRACKET	1/8" THICK	0090
B8	18 X 1.5 X 24	COUNTER BRACKET	1/8" THICK	0090
B9	14 X 36 X 30	WALL CABINET	FLUSH PANEL P.LAM DOORS	W2052
B10	30 X 36 X 84	WARDROBE CABINET	W KEYED LOCK	T2592
B11	6 X 1.5 X 24	COUNTER BRACKET	1/8" THICK	0090

ITEM	D X W X H	DESCRIPTION
C1	18 X 36 X 84	METAL SHELVING UNIT
C2	24 X 36 X 84	METAL SHELVING UNIT
C3	12 X 36 X 84	METAL SHELVING UNIT
C4	24 X 48 X 84	METAL SHELVING UNIT
C5	40 X 48 X 31	STORAGE BIN (SEE ATHLETIC EQUIPMENT SPECIFICATION, 11/2007)

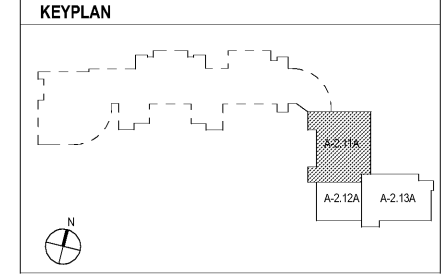
ITEM	DESCRIPTION
G1	TACK BOARD, IN LENGTHS SHOWN
G2	DRY MARKER BOARD, IN LENGTHS SHOWN
G3	DISPLAY RAIL, IN LENGTHS SHOWN
G4	CLASSROOM CLOCK
G5	CORRIDOR PROJECTOR SCREEN
G6	KEY BOARD
G7	FIRE EXTINGUISHER IN RECESSED CABINET
G8	FRAMING
G9	FIRE EXTINGUISHER
G10	SOUND ABSORBING PANEL
G11	SOUND DIFFUSING PANEL
G12	COMPONENT BRACKET

- COURT LINE MARKING INSTRUCTIONS**
- ALL MAIN BASKETBALL COURT LINES SHALL BE 2" WIDE (BLACK). PROVIDE SPACE BETWEEN MAIN LINES AND PAINT SOLID BORDER.
 - ALL BASKETBALL & BADMINTON, & VOLLEYBALL PRACTICE COURT LINES SHALL BE 2" WIDE (TAN).
 - MAIN VOLLEYBALL COURT LINES SHALL BE 2" WIDE (WHITE).
 - ALL BASKETBALL COURT LINE MARKING MEASUREMENTS ARE TO BE TO THE INSIDE EDGE OF LINE, EXCEPT CENTER LINES.
 - ALL VOLLEYBALL COURT LINE MARKING MEASUREMENTS ARE TO TEH OUTSIDE EDGE OF LINES, EXCEPT CENTER LINES.
 - ALL SECONDARY LINE MARKINGS THAT INTERCEPT THE MAIN BASKETBALL COURT LINES SHALL BE TERMINATED 1" SHORT OF MAIN BASKETBALL COURT LINES.

- PLAN NOTES**
- REFER TO CLASSROOM ENLARGEMENTS FOR TYPICAL CLASSROOM ACCESSORIES TO BE PROVIDED IN ALL CLASSROOMS.
 - FOR EXACT EXTERIOR CONTROL JOINTS AND DOWNSPOUT LOCATIONS SEE BUILDING ELEVATIONS. REFER TO TYPICAL CONTROL JOINT DETAILS ON SHEET A-1.12 COORDINATE WITH SPECIFICATIONS.
 - REFER TO SHEET A-1.10 & A-1.11 FOR PARTITION TYPES.
 - WALLS SURROUNDING A COLUMN, ADJACENT TO A LOCKER AND RESTROOM TOILET PARTITIONS SHALL BE PARTITION M8B-LINO.
 - REFER TO TYPICAL PLAN DETAILS FOR ALL FURRING ON COLUMNS & WALLS.
 - REFER TO SHEET A-8.22 FOR WINDOW FRAME ELEVATIONS.
 - REFER TO SHEET A-2.50 FOR CASEWORK, EQUIPMENT, & ACCESSORIES SCHEDULE.

PLAN LEGEND

---	SMOKE PARTITION	●	SPOT ELEVATION
---	1 HR FIRE	CJ	CONTROL JOINT
---	2 HR FIRE	M8BAS	PARTITION TYPE
---	2 HR SMOKE WALL	○	ACCESSORY & CASEWORK SYMBOL
---	MATCH LINE	A	WINDOW TYPE
---	XXXX-XXXX	○	MAGNETIC DOOR HOLD OPEN DEVICE
---	ROOM NAME	○	DOOR AND FRAME DESIGNATION. SEE DOOR SCHEDULE IN PROJECT MANUAL.
---	ROOM TAG	○	
---	DEPRESSED SLAB. SEE PLANS FOR DEPTH		



CGLS ARCHITECTS
CHAPMAN GRIFFIN LANIER SUSENBACH ARCHITECTS
2018

STATE OF GEORGIA
ROBERT SUSENBACH
REGISTERED ARCHITECT

DATE	NO.	DESCRIPTION
01/27/18		SCHEMATIC DEVELOPMENT
01/19/18		SCHEMATIC DEVELOPMENT
01/17/18		SCHEMATIC DEVELOPMENT
01/10/18		SCHEMATIC DEVELOPMENT
01/01/18		SCHEMATIC DEVELOPMENT

DOE FACILITY CODE: 660-3086
RIVERWOOD HIGH SCHOOL PHASE 3-B
AUDITORIUM/GYMNASIUM ADDITION
5900 RAIDER DRIVE NW SANDY SPRINGS, GA 30328
FULTON COUNTY SCHOOLS RFP NO. 411-19

CHAPMAN GRIFFIN LANIER SUSENBACH ARCHITECTS
400 Galleria Pkwy., Suite 100 Atlanta, Ga 30339 Phone: 404.733.5493

PROJECT NO. 16015.02
DATE: 09/17/18
DRAWN BY: Author
CHECKED BY: Checker
SCALE:

LEVEL 000 FLOOR PLAN - PART 1

A-2.11A