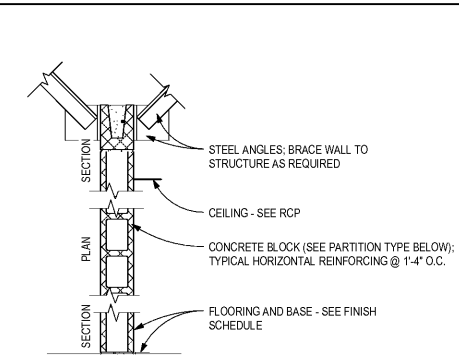


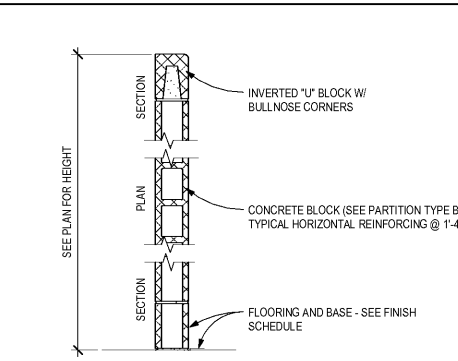
WALL TYPE	DESCRIPTION	FIRE RATING	STC	UL NO.
M5A	6" CMU	-	-	-
M5A	8" CMU	-	-	-
M12A	12" CMU	-	-	-

MA PARTITION 'TO DECK'



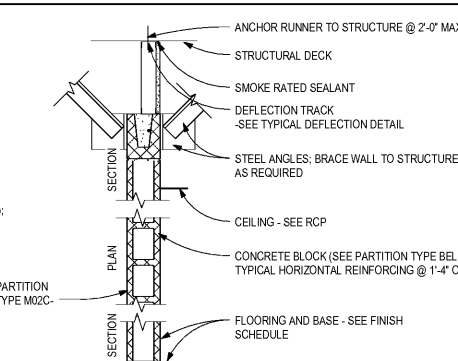
WALL TYPE	DESCRIPTION	FIRE RATING	STC	UL NO.
M4B	4" CMU BLOCK ONLY EXTENDS MINIMUM ONE COURSE ABOVE CLG & BRACED TO STRUCTURE AS REQ'D; SEE STRUCTURAL DRAWINGS	-	-	-
M6B	6" CMU BLOCK ONLY EXTENDS MINIMUM ONE COURSE ABOVE CLG & BRACED TO STRUCTURE AS REQ'D; SEE STRUCTURAL DRAWINGS	-	-	-
M8B	8" CMU BLOCK ONLY EXTENDS MINIMUM ONE COURSE ABOVE CLG & BRACED TO STRUCTURE AS REQ'D; SEE STRUCTURAL DRAWINGS	-	-	-

MB PARTITION 'ONE COURSE ABOVE CLG'



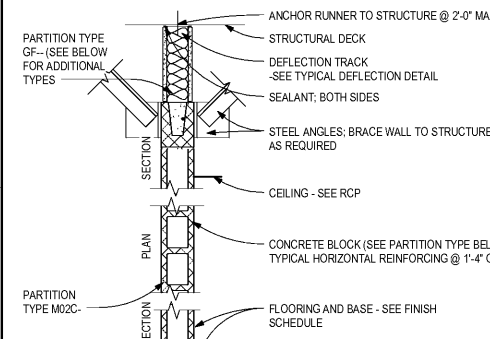
WALL TYPE	DESCRIPTION	FIRE RATING	STC	UL NO.
M4C	4" CMU	-	-	-
M6C	6" CMU	-	-	-
M8C	8" CMU	-	-	-

MC PARTITION 'LOW WALL'



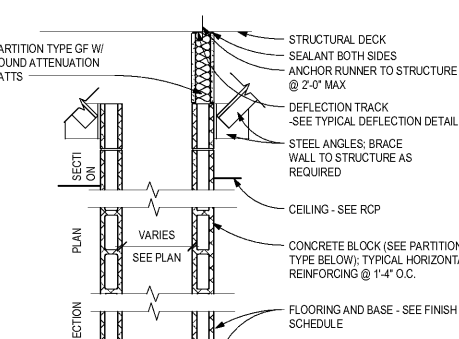
WALL TYPE	DESCRIPTION	FIRE RATING	STC	UL NO.
M6D	6" CMU W/ G4D WALL ABOVE W/ 5/8" FIBERGLASS MAT FACED GYP BD. EXTENDING TO BOTTOM OF STRUCTURE; ALIGN FINISHED FACE OF WALL	-	-	-
M8D	8" CMU W/ G4D WALL ABOVE W/ 5/8" FIBERGLASS MAT FACED GYP BD. EXTENDING TO BOTTOM OF STRUCTURE; ALIGN FINISHED FACE OF WALL	-	-	-

MD PARTITION 'STACKED WALL'



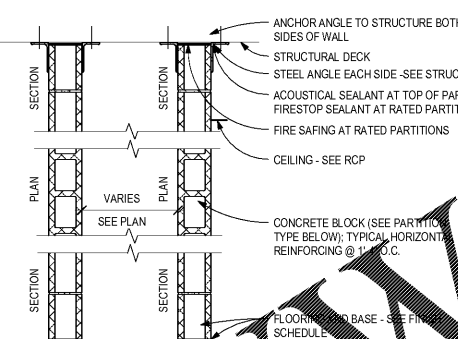
WALL TYPE	DESCRIPTION	FIRE RATING	STC	UL NO.
M6E	6" CMU W/ TYPE GF WALL ABOVE W/ FIBERGLASS MAT FACED GYP BD. EXTENDING TO BOTTOM OF STRUCTURE; ALIGN CENTER OF WALLS; ACOUSTICAL SEALANT	-	-	-
M8E	8" CMU W/ TYPE GF WALL ABOVE W/ FIBERGLASS MAT FACED GYP BD. EXTENDING TO BOTTOM OF STRUCTURE; ALIGN CENTER OF WALLS; ACOUSTICAL SEALANT	-	-	-

ME PARTITION 'ACOUSTICAL STACKED WALL'



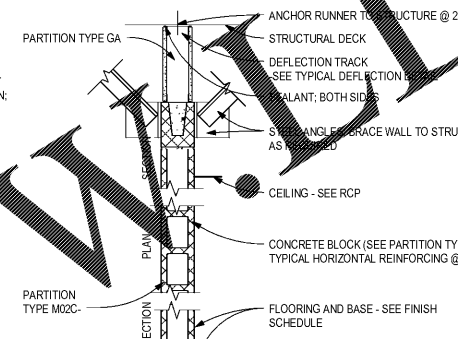
WALL TYPE	DESCRIPTION	FIRE RATING	STC	UL NO.
M4F	2 LAYERS 4" CMU W/ GF WALL ABOVE W/ FIBERGLASS MAT FACED GYP BD. EXTENDING TO BOTTOM OF STRUCTURE; ALIGN CENTER OF WALLS; ACOUSTICAL SEALANT	-	-	-
M6F	1 LAYERS 4" CMU & 1 LAYER 6" CMU W/ GF WALL ABOVE W/ FIBERGLASS MAT FACED GYP BD. EXTENDING TO BOTTOM OF STRUCTURE; ALIGN CENTER OF WALLS; ACOUSTICAL SEALANT	-	-	-

MF PARTITION 'CMU CHASE'



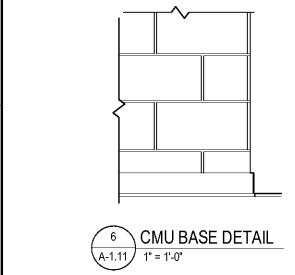
WALL TYPE	DESCRIPTION	FIRE RATING	STC	UL NO.
M6G	2 LAYERS 6" CMU EXTENDING TO BOTTOM OF STRUCTURE; ACOUSTICAL SEALANT	-	-	-
M8G	2 LAYERS 8" CMU EXTENDING TO BOTTOM OF STRUCTURE; ACOUSTICAL SEALANT	-	-	-
M12G	2 LAYERS 12" CMU EXTENDING TO BOTTOM OF STRUCTURE; ACOUSTICAL SEALANT	-	-	-

MG PARTITION 'DOUBLE WALL'



WALL TYPE	DESCRIPTION	FIRE RATING	STC	UL NO.
M6H	6" CMU W/ TYPE GA WALL ABOVE W/ FIBERGLASS MAT FACED GYP BD. EXTENDING TO BOTTOM OF STRUCTURE; ALIGN CENTER OF WALLS	-	-	-
M8H	8" CMU W/ TYPE GA WALL ABOVE W/ FIBERGLASS MAT FACED GYP BD. EXTENDING TO BOTTOM OF STRUCTURE; ALIGN CENTER OF WALLS	-	-	-

MH PARTITION 'STACKED WALL'

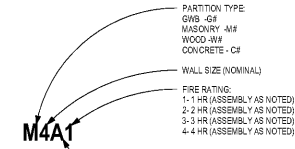


WALL TYPE	DESCRIPTION	FIRE RATING	STC	UL NO.
P11	11" PRECAST PANEL WALL	-	-	-

PA PRECAST INTERIOR PARTITION 'TO DECK'

PARTITION NOTES

- SEE STRUCTURAL DRAWINGS FOR MASONRY REINFORCING REQUIREMENTS & BRACING REQUIREMENTS.
- ALL FIRE RATED PARTITIONS ARE TO EXTEND TO UNDERSIDE OF ROOF DECK OR FLOOR DECK ABOVE, WHERE BEAMS AND/OR BRACED JOISTS RUN PARALLEL & ALONG W/ WALLS. EXTEND FIRE RATING AROUND TO COMPLETELY CONCEAL BEAM/BAR JOISTS. SEE U.L. ASSEMBLY N51!
- MEET OR EXCEED THE PARTITION TYPE REQUIREMENTS INDICATED.
- REFER TO ARCHITECTURAL FLOOR PLANS AND PLAN NOTES FOR PARTITION TYPE LOCATIONS.
- SEE SPECIFIC DETAIL DRAWING AND SPECIFICATIONS FOR OFFSETS AT THE TOP OF THE PARTITION, PLAN CONFIGURATIONS AND PROJECT CONDITIONS.
- PROVIDE FIRE RETARDANT TREATED BLOCKING AND SUPPORT FOR EQUIPMENT AND ACCESSORIES WHICH REQUIRE INTERNAL REINFORCEMENT ON METAL STUD PARTITION WALLS. GROUT FILL @ CMU WALLS WITH EQUIPMENT LOCATED ON ALL PLANS AND EQUIPMENT FOUND ON SCHEDULE & SHEET.
- GYP BOARD JOINTS ARE TO BE FINISHED DOWN TO FLOOR LEVEL AND UP TO SLAB/STRUCTURAL DECK ABOVE.
- FOR RATED WALLS ALL EXPOSED SCREWS SHALL BE COVERED WITH JOINT COMPOUND.
- CONTRACTOR SHALL FOLLOW THE U.L. LISTED ASSEMBLY FOR PARTITION TYPES.
- WHEN USING A RATED WALL, FOLLOW ALL DETAILS OF THE LISTED ASSEMBLY, NOT ALL OF THE DETAILS ON THE SHEET ARE INDICATED.
- REFER TO SHEETS A-1.12 AND A-1.13 FOR ADDITIONAL PARTITION TYPE INFORMATION AND CONTROL & EXPANSION JOINTS.
- WHERE INDICATED METAL STUD WALLS WILL NOT FREELY SPAN FULL HEIGHT INDICATED. BRACING BACK TO STRUCTURE ABOVE FINISHED CEILING. COORDINATE LOCATION W/ MEP SCHEDULE.
- SEAL ALL PENETRATIONS THROUGH CORRIDOR & FIRE RATED WALLS. SEE U.L. ASSEMBLY FOR PENETRATION FINISHING DETAILS.
- GROUT FILL SOLID, ALL 4" CMU BLOCKS WHERE LOCATED IN CORRIDORS.



MASONRY PARTITION TYPE KEY

WALL TYPE	DESCRIPTION	FIRE RATING	STC	UL NO.
M6-1	6" CMU W/ FIRE RATED SEALANT	1 HR	-	-
M8-1	8" CMU W/ FIRE RATED SEALANT	1 HR	-	-
M12-1	12" CMU W/ FIRE RATED SEALANT	1 HR	-	-
M6-2	6" CMU W/ FIRE RATED SEALANT	2 HR	-	-
M8-2	8" CMU W/ FIRE RATED SEALANT	2 HR	U905	-
M12-2	12" CMU W/ FIRE RATED SEALANT	2 HR	U905	-

* SEE IBC TABLE 722.3.2 FOR MINIMUM EQUIVALENT THICKNESS REQUIRED TO MEET LISTED FIRE RATING.

M PARTITION 'FIRE RATING'
(MODIFIER FOR TYPE IS MISSING IN ABOVE RATINGS; MAY BE APPLIED TO ANY PARTITION)

- NOTES:**
- PROVIDE U.L. ASSEMBLY HW-0-022 @ JOINT BETWEEN TOP OF CMU WALLS & STRUCTURE @ ALL FIRE RATED PARTITIONS.
 - SMOKE RATINGS REFERENCED IN PARTITION TYPES ARE FOR SMOKE BARRIERS. SEE PLAN LEGEND AND PLANS FOR DESIGNATIONS & LOCATIONS OF SMOKE PARTITIONS.
 - SMOKE PARTITIONS MUST LIMIT THE PASSAGE OF SMOKE BUT SMOKE DAMPERS ARE NOT REQUIRED TO PREVENT PENETRATIONS. GASKETING @ DOORS IS NOT REQUIRED AS LONG AS CONTRACTOR INSTALLS DOORS TO MEET CLEARANCES IN NFPA 80, STANDARD FOR FIRE DOORS & OTHER OPENING PROTECTIVES.
 - SMOKE BARRIERS MUST RESTRICT THE PASSAGE OF SMOKE. SMOKE DAMPERS ARE REQUIRED @ DUCT PENETRATIONS. GASKETING @ DOORS IS ALSO REQUIRED AT BARRIERS.

CHAPMAN GRIFFIN LANIER SUSSENBACH ARCHITECTS
 400 Galleria Pkwy., Suite 100 Atlanta, Ga 30339 Phone: 404.733.5493
 RIVERWOOD HIGH SCHOOL PHASE 3-B AUDITORIUM/GYMNASIUM ADDITION
 5900 RAIDER DRIVE NW SANDY SPRINGS, GA 30328
 FULTON COUNTY SCHOOLS RFP NO. 41149
 PROJECT NO. 16015.02
 DATE: 09/17/18
 DRAWN BY: Author
 CHECKED BY: Checker
 SHEETS:

STATE OF GEORGIA
 REGISTERED ARCHITECT
 ARCHITECTURE FACILITATION DESIGN
 CGLS ARCHITECTS
 CHAPMAN GRIFFIN LANIER SUSSENBACH ARCHITECTS INC.
 2018
 RELEASED FOR CONSTRUCTION

A-1.11