

DATE	NO.	DESCRIPTION
10/12/18		FINAL CODE SUBMITTAL ISSUED FOR PROPOSALS
11/01/18		

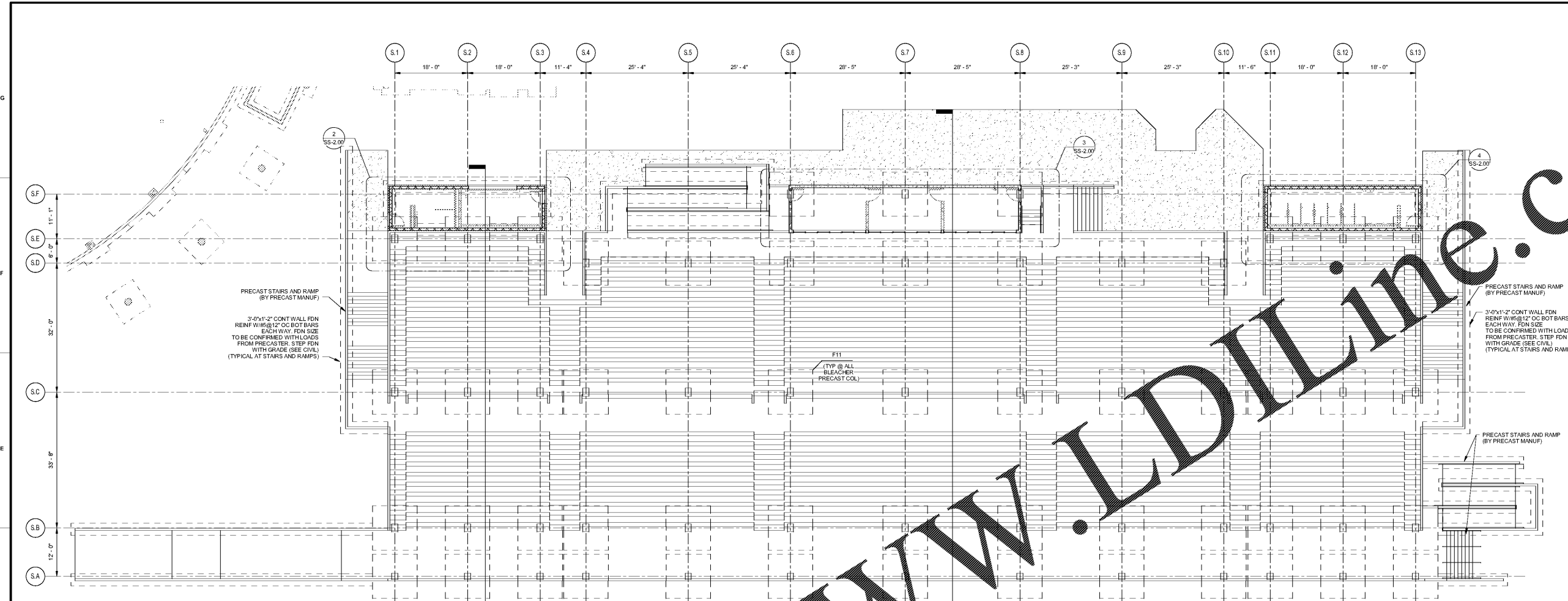
CHAPMAN GRIFFIN LANIER SUSENBACH ARCHITECTS
2500 Cumberland Pkwy., Suite 350 Atlanta, Ga 30339 Phone: 404.733.5419-3

DOE FACILITY CODE: 660-3086
RIVERWOOD HIGH SCHOOL - PHASE 3 - AUDITORIUM/GYMNASIUM ADDITION
5900 RAIDER DRIVE NW SANDY SPRINGS, GA 30328
FULTON COUNTY SCHOOLS RFP NO. XXX-XX

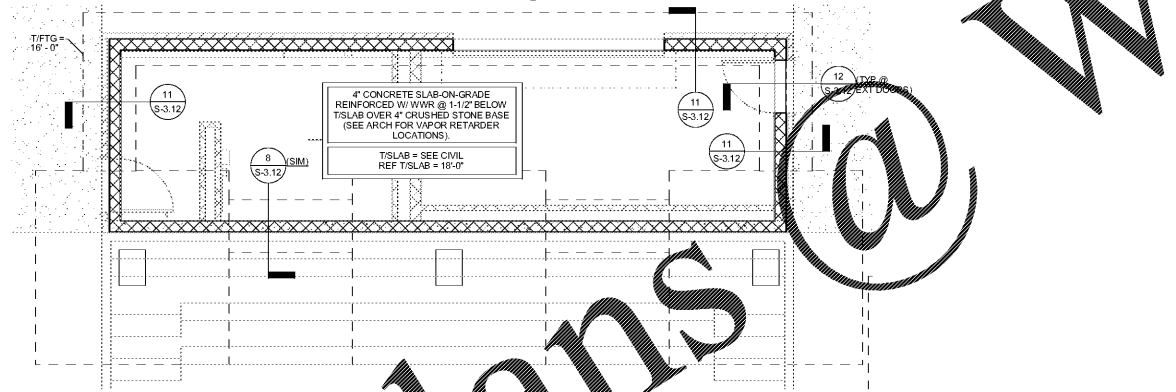
STADIUM GRANDSTANDS & PRESSBOX FOUNDATION PLANS

PROJECT NO. 0217302.00
DATE: 09/17/18
DRAWN BY: RAS
CHECKED BY: ACB

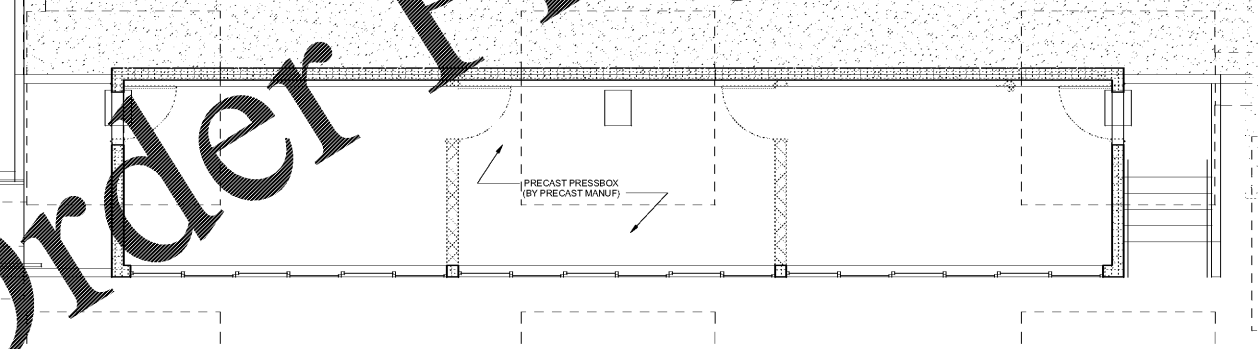
SS-2.00



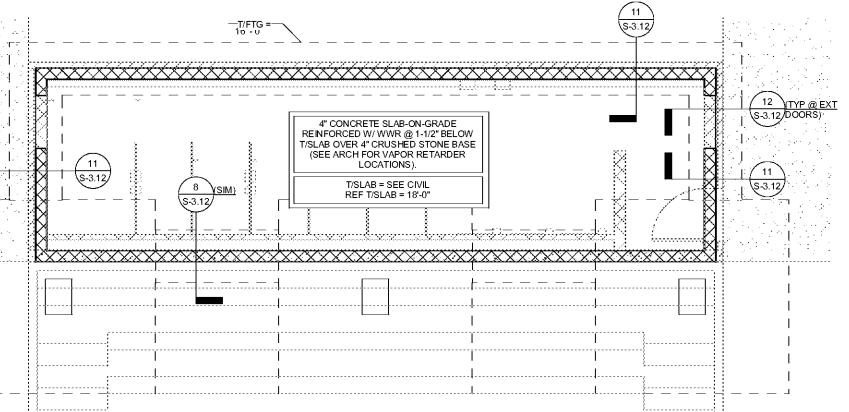
HOME BLEACHERS FOUNDATION PLAN
SCALE: 3/32" = 1'-0"



HOME BLEACHERS CONCESSIONS FDN PLAN
SCALE: 1/4" = 1'-0"



HOME BLEACHERS PRESSBOX FOUNDATION PLAN
SCALE: 1/4" = 1'-0"



HOME BLEACHERS RESTROOM FOUNDATION PLAN
SCALE: 1/4" = 1'-0"

Order Plans @ WWW.IDLINE.COM