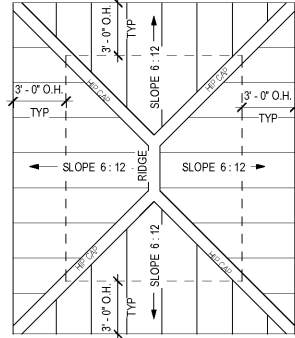
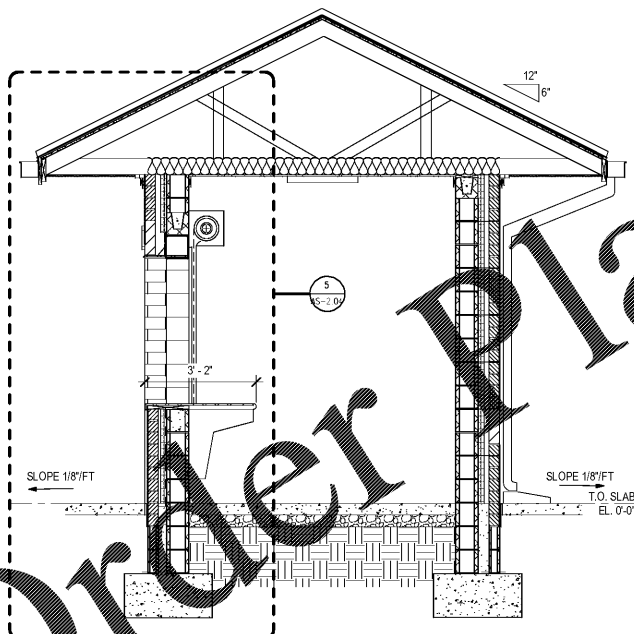


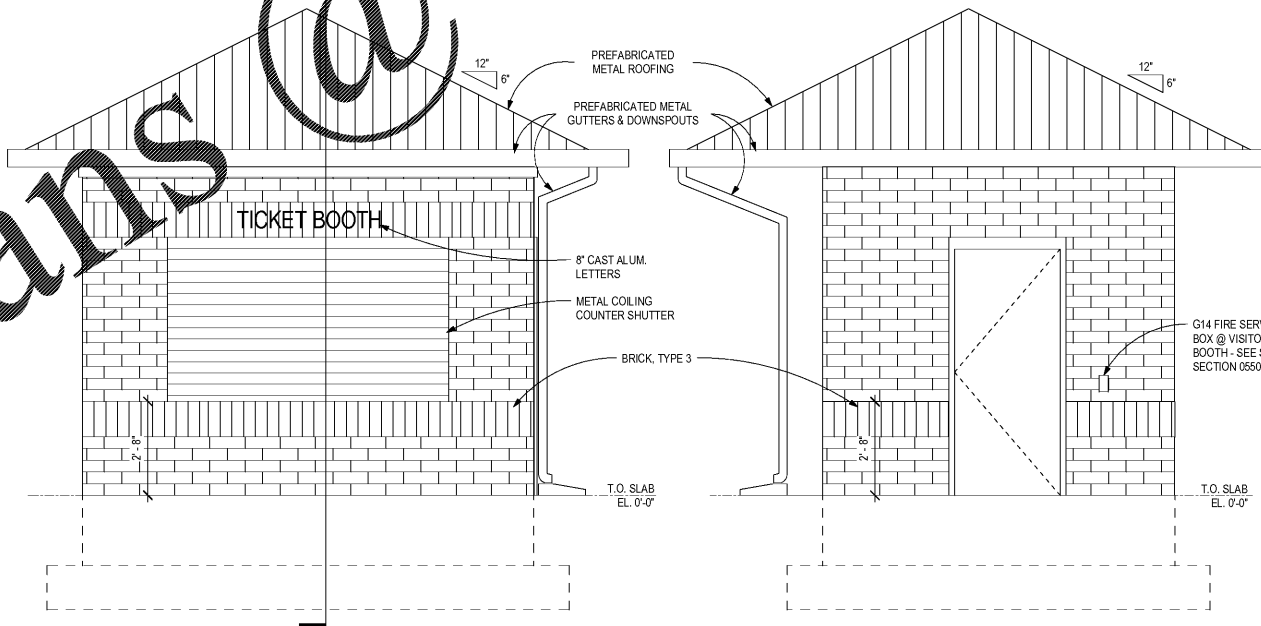
1 TICKET BOOTH - FLOOR PLAN
AS-2.04 1/4" = 1'-0"



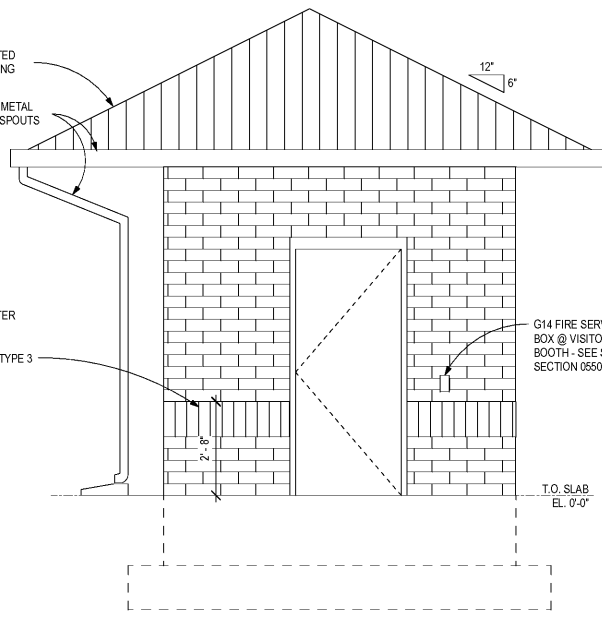
8 TICKET BOOTH - ROOF PLAN
AS-2.04 1/4" = 1'-0"



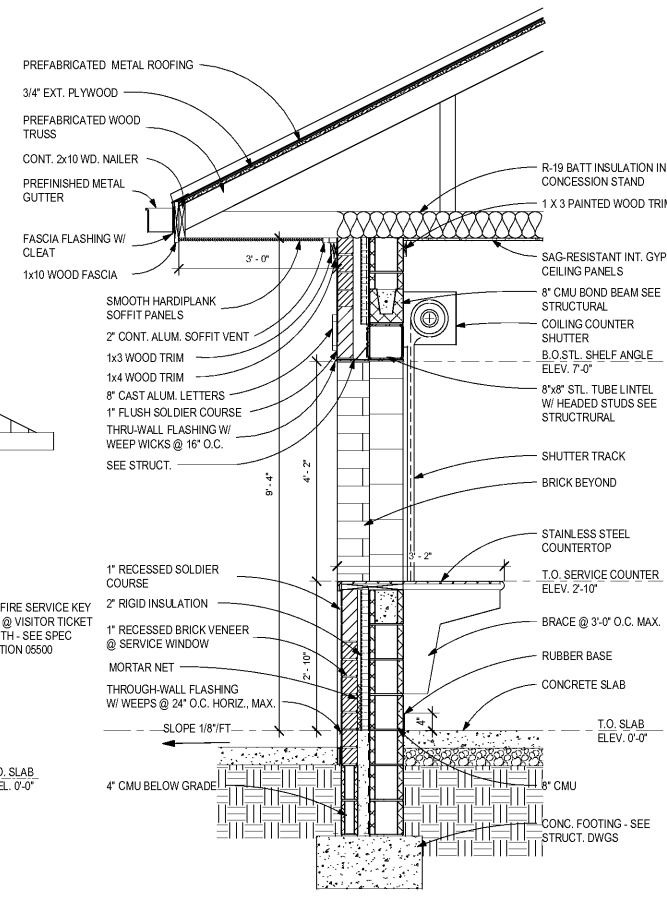
2 TICKET BOOTH - BUILDING SECTION
AS-2.04 1/2" = 1'-0"



3 TICKET BOOTH - FRONT ELEVATION
AS-2.04 1/2" = 1'-0"



4 TICKET BOOTH - SIDE ELEVATION
AS-2.04 1/2" = 1'-0"



5 WALL SECTION - TICKET BOOTH
AS-2.04 3/4" = 1'-0"

Order Plans @

CGLS ARCHITECTS
CHAPMAN GRIFFIN LANIER SUSENBACH ARCHITECTS INC.
2018

RELEASED FOR CONSTRUCTION

DATE	NO.	DESCRIPTION
01/27/18	001	SCHEMATIC DEVELOPMENT
02/15/18	002	SCHEMATIC DEVELOPMENT
02/17/18	003	SCHEMATIC DEVELOPMENT
02/17/18	004	SCHEMATIC DEVELOPMENT
02/17/18	005	SCHEMATIC DEVELOPMENT
02/17/18	006	SCHEMATIC DEVELOPMENT
02/17/18	007	SCHEMATIC DEVELOPMENT
02/17/18	008	SCHEMATIC DEVELOPMENT
02/17/18	009	SCHEMATIC DEVELOPMENT
02/17/18	010	SCHEMATIC DEVELOPMENT
02/17/18	011	SCHEMATIC DEVELOPMENT
02/17/18	012	SCHEMATIC DEVELOPMENT
02/17/18	013	SCHEMATIC DEVELOPMENT
02/17/18	014	SCHEMATIC DEVELOPMENT
02/17/18	015	SCHEMATIC DEVELOPMENT
02/17/18	016	SCHEMATIC DEVELOPMENT
02/17/18	017	SCHEMATIC DEVELOPMENT
02/17/18	018	SCHEMATIC DEVELOPMENT
02/17/18	019	SCHEMATIC DEVELOPMENT
02/17/18	020	SCHEMATIC DEVELOPMENT
02/17/18	021	SCHEMATIC DEVELOPMENT
02/17/18	022	SCHEMATIC DEVELOPMENT
02/17/18	023	SCHEMATIC DEVELOPMENT
02/17/18	024	SCHEMATIC DEVELOPMENT
02/17/18	025	SCHEMATIC DEVELOPMENT
02/17/18	026	SCHEMATIC DEVELOPMENT
02/17/18	027	SCHEMATIC DEVELOPMENT
02/17/18	028	SCHEMATIC DEVELOPMENT
02/17/18	029	SCHEMATIC DEVELOPMENT
02/17/18	030	SCHEMATIC DEVELOPMENT
02/17/18	031	SCHEMATIC DEVELOPMENT
02/17/18	032	SCHEMATIC DEVELOPMENT
02/17/18	033	SCHEMATIC DEVELOPMENT
02/17/18	034	SCHEMATIC DEVELOPMENT
02/17/18	035	SCHEMATIC DEVELOPMENT
02/17/18	036	SCHEMATIC DEVELOPMENT
02/17/18	037	SCHEMATIC DEVELOPMENT
02/17/18	038	SCHEMATIC DEVELOPMENT
02/17/18	039	SCHEMATIC DEVELOPMENT
02/17/18	040	SCHEMATIC DEVELOPMENT
02/17/18	041	SCHEMATIC DEVELOPMENT
02/17/18	042	SCHEMATIC DEVELOPMENT
02/17/18	043	SCHEMATIC DEVELOPMENT
02/17/18	044	SCHEMATIC DEVELOPMENT
02/17/18	045	SCHEMATIC DEVELOPMENT
02/17/18	046	SCHEMATIC DEVELOPMENT
02/17/18	047	SCHEMATIC DEVELOPMENT
02/17/18	048	SCHEMATIC DEVELOPMENT
02/17/18	049	SCHEMATIC DEVELOPMENT
02/17/18	050	SCHEMATIC DEVELOPMENT
02/17/18	051	SCHEMATIC DEVELOPMENT
02/17/18	052	SCHEMATIC DEVELOPMENT
02/17/18	053	SCHEMATIC DEVELOPMENT
02/17/18	054	SCHEMATIC DEVELOPMENT
02/17/18	055	SCHEMATIC DEVELOPMENT
02/17/18	056	SCHEMATIC DEVELOPMENT
02/17/18	057	SCHEMATIC DEVELOPMENT
02/17/18	058	SCHEMATIC DEVELOPMENT
02/17/18	059	SCHEMATIC DEVELOPMENT
02/17/18	060	SCHEMATIC DEVELOPMENT
02/17/18	061	SCHEMATIC DEVELOPMENT
02/17/18	062	SCHEMATIC DEVELOPMENT
02/17/18	063	SCHEMATIC DEVELOPMENT
02/17/18	064	SCHEMATIC DEVELOPMENT
02/17/18	065	SCHEMATIC DEVELOPMENT
02/17/18	066	SCHEMATIC DEVELOPMENT
02/17/18	067	SCHEMATIC DEVELOPMENT
02/17/18	068	SCHEMATIC DEVELOPMENT
02/17/18	069	SCHEMATIC DEVELOPMENT
02/17/18	070	SCHEMATIC DEVELOPMENT
02/17/18	071	SCHEMATIC DEVELOPMENT
02/17/18	072	SCHEMATIC DEVELOPMENT
02/17/18	073	SCHEMATIC DEVELOPMENT
02/17/18	074	SCHEMATIC DEVELOPMENT
02/17/18	075	SCHEMATIC DEVELOPMENT
02/17/18	076	SCHEMATIC DEVELOPMENT
02/17/18	077	SCHEMATIC DEVELOPMENT
02/17/18	078	SCHEMATIC DEVELOPMENT
02/17/18	079	SCHEMATIC DEVELOPMENT
02/17/18	080	SCHEMATIC DEVELOPMENT
02/17/18	081	SCHEMATIC DEVELOPMENT
02/17/18	082	SCHEMATIC DEVELOPMENT
02/17/18	083	SCHEMATIC DEVELOPMENT
02/17/18	084	SCHEMATIC DEVELOPMENT
02/17/18	085	SCHEMATIC DEVELOPMENT
02/17/18	086	SCHEMATIC DEVELOPMENT
02/17/18	087	SCHEMATIC DEVELOPMENT
02/17/18	088	SCHEMATIC DEVELOPMENT
02/17/18	089	SCHEMATIC DEVELOPMENT
02/17/18	090	SCHEMATIC DEVELOPMENT
02/17/18	091	SCHEMATIC DEVELOPMENT
02/17/18	092	SCHEMATIC DEVELOPMENT
02/17/18	093	SCHEMATIC DEVELOPMENT
02/17/18	094	SCHEMATIC DEVELOPMENT
02/17/18	095	SCHEMATIC DEVELOPMENT
02/17/18	096	SCHEMATIC DEVELOPMENT
02/17/18	097	SCHEMATIC DEVELOPMENT
02/17/18	098	SCHEMATIC DEVELOPMENT
02/17/18	099	SCHEMATIC DEVELOPMENT
02/17/18	100	SCHEMATIC DEVELOPMENT

CHAPMAN GRIFFIN LANIER SUSENBACH ARCHITECTS
400 Galleria Pkwy., Suite 100 Atlanta, Ga 30339 Phone: 404.733.5493

RIVERWOOD HIGH SCHOOL PHASE 3-B AUDITORIUM/GYMNASIUM ADDITION
5900 RAIDER DRIVE NW SANDY SPRINGS, GA 30328
FULTON COUNTY SCHOOLS RFP NO. 411-19

TICKET BOOTH PLAN AND DETAILS - BID ALT 1

PROJECT NO. 16015.02
DATE: 09/17/18
DRAWN BY: Author
CHECKED BY: Checker
DATE: 09/17/18

AS-2.04