



CHAPMAN GRIFFIN LANIER SUSENBACH ARCHITECTS
1000 GALLERIA PLACE, SUITE 100, ATLANTA, GA 30339
PHONE: 404.733.5493

STATE OF GEORGIA
REGISTERED ARCHITECT

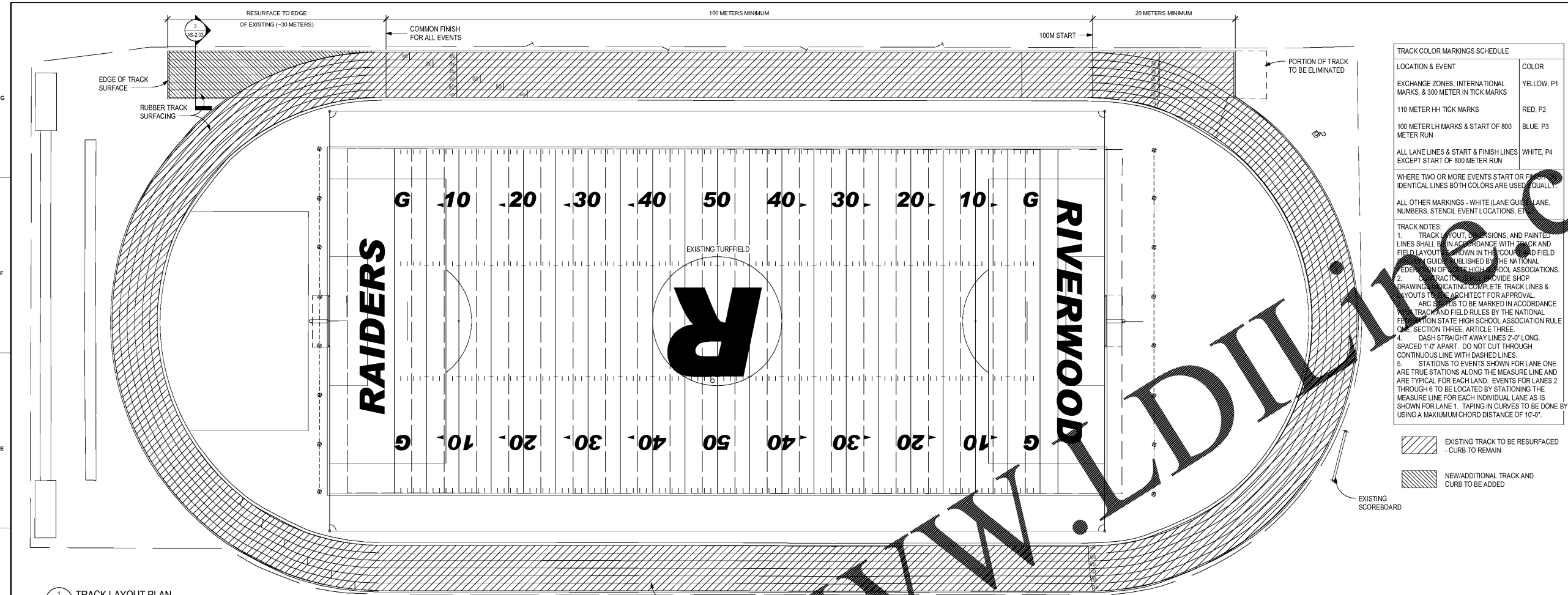
DATE NO. DESCRIPTION
01/27/18 000 PRELIMINARY SUBMITTAL DESIGN DEVELOPMENT
01/19/18 001 CONSTRUCTION DOCUMENTS
01/17/18 002 CHECK - SET / FINAL SET
01/18/18 003 FINAL GDDC SUBMITTAL ISSUED FOR PROPOSALS

DOE FACILITY CODE: 660-3066
RIVERWOOD HIGH SCHOOL PHASE 3-8
AUDITORIUM/GYMNASIUM ADDITION
5900 RAIDER DRIVE NW SANDY SPRINGS, GA 30328
FULTON COUNTY SCHOOLS RFP NO. 411-19

CHAPMAN GRIFFIN LANIER SUSENBACH ARCHITECTS
400 GALLERIA PLACE, SUITE 100, ATLANTA, GA 30339
PHONE: 404.733.5493

PROJECT NO. 16015.02
DATE 09/17/18
DESIGNED BY: Author
CHECKED BY: Checker

AS-2.03



TRACK COLOR MARKINGS SCHEDULE

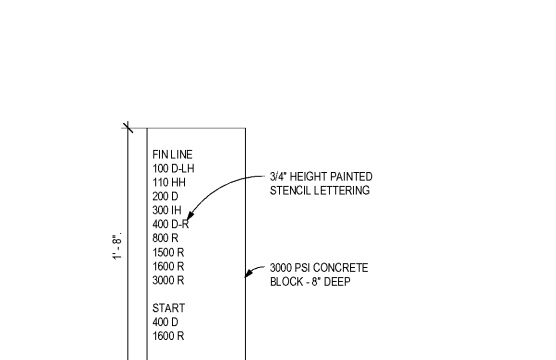
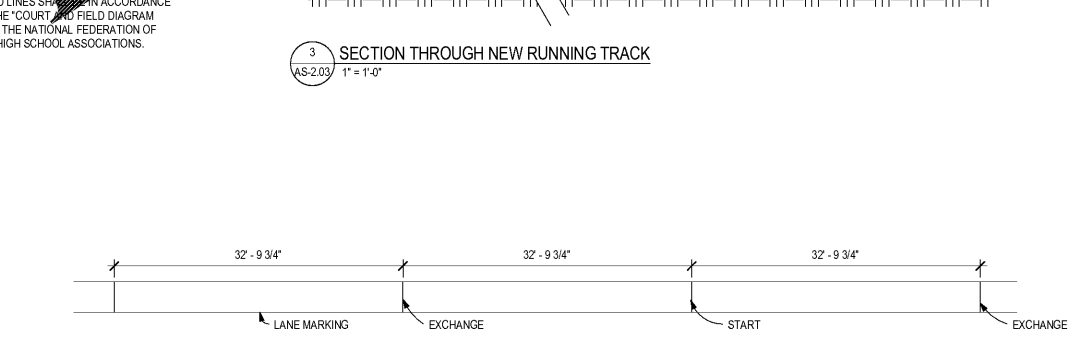
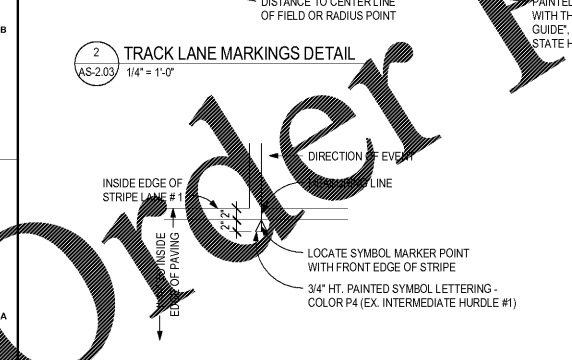
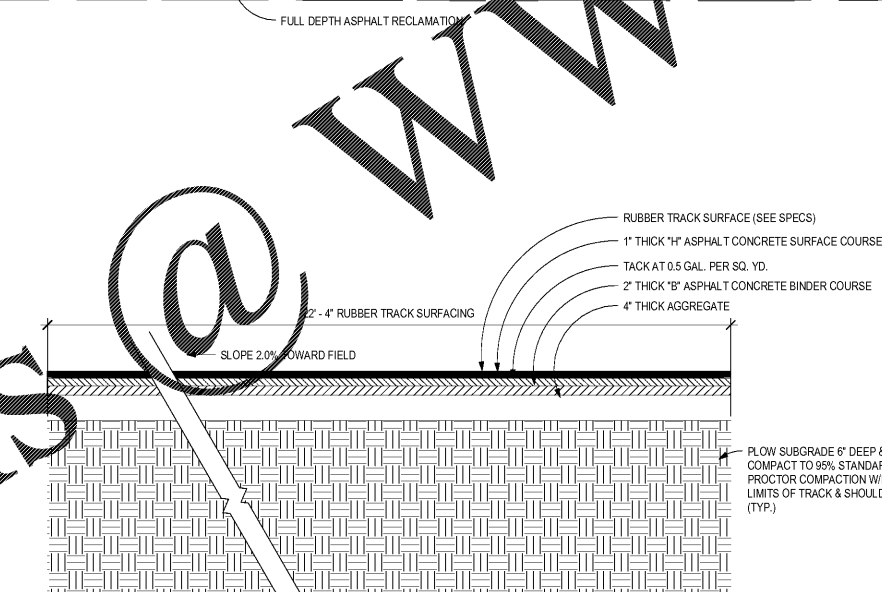
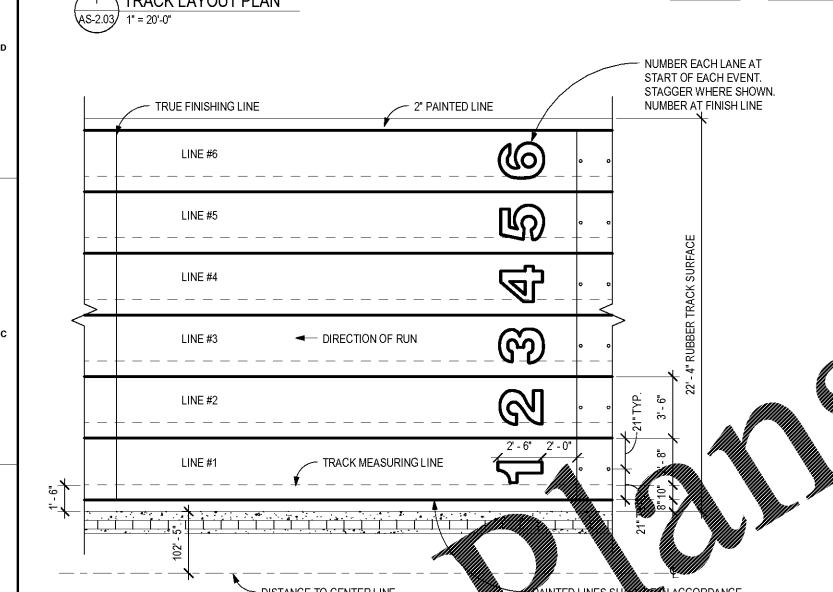
LOCATION & EVENT	COLOR
EXCHANGE ZONES, INTERNATIONAL MARKS, & 300 METER IN TICK MARKS	YELLOW, P1
110 METER HH TICK MARKS	RED, P2
100 METER LH MARKS & START OF 800 METER RUN	BLUE, P3
ALL LANE LINES & START & FINISH LINES EXCEPT START OF 800 METER RUN	WHITE, P4

WHERE TWO OR MORE EVENTS START OR FINISH ON IDENTICAL LINES BOTH COLORS ARE USED EQUALLY

ALL OTHER MARKINGS - WHITE (LANE GUIDES, LANE NUMBERS, STENCIL EVENT LOCATIONS, ETC.)

TRACK NOTES:
1. TRACK LAYOUT, DIMENSIONS, AND PAINTED LINES SHALL BE IN ACCORDANCE WITH TRACK AND FIELD LAYOUT SHOWN IN THE COURSE AND FIELD GUIDES PUBLISHED BY THE NATIONAL FEDERATION OF STATE HIGH SCHOOL ASSOCIATIONS.
2. CONTRACTOR SHALL PROVIDE SHOP DRAWINGS INDICATING COMPLETE TRACK LINES & JOISTS TO BE ARCHITECT FOR APPROVAL.
3. ARC STAKES TO BE MARKED IN ACCORDANCE WITH TRACK AND FIELD RULES BY THE NATIONAL FEDERATION STATE HIGH SCHOOL ASSOCIATION RULE ONE, SECTION THREE, ARTICLE THREE.
4. DASH STRAIGHT AWAY LINES 2'-0" LONG, SPACED 1'-0" APART. DO NOT CUT THROUGH CONTINUOUS LINE WITH DASHED LINES.
5. STATIONING TO EVENTS SHOWN FOR LANE ONE ARE TRUE STATIONING ALONG THE MEASURE LINE AND ARE TYPICAL FOR EACH LAND. EVENTS FOR LANES 2 THROUGH 6 TO BE LOCATED BY STATIONING THE MEASURE LINE FOR EACH INDIVIDUAL LANE AS IS SHOWN FOR LANE 1. TAPING IN CURVES TO BE DONE BY USING A MAXIMUM CHORD DISTANCE OF 10'-0".

- EXISTING TRACK TO BE RESURFACED - CURB TO REMAIN
- NEW/ADDITIONAL TRACK AND CURB TO BE ADDED



Order Plans @ WWW.MTDITING.COM