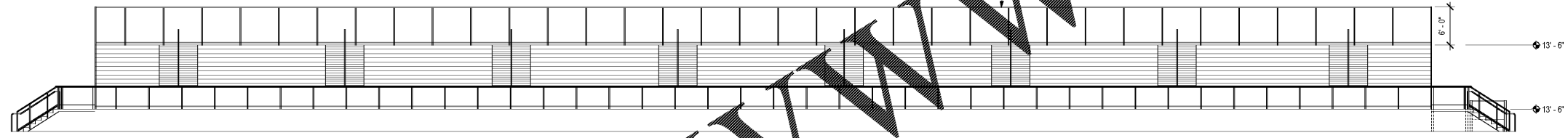
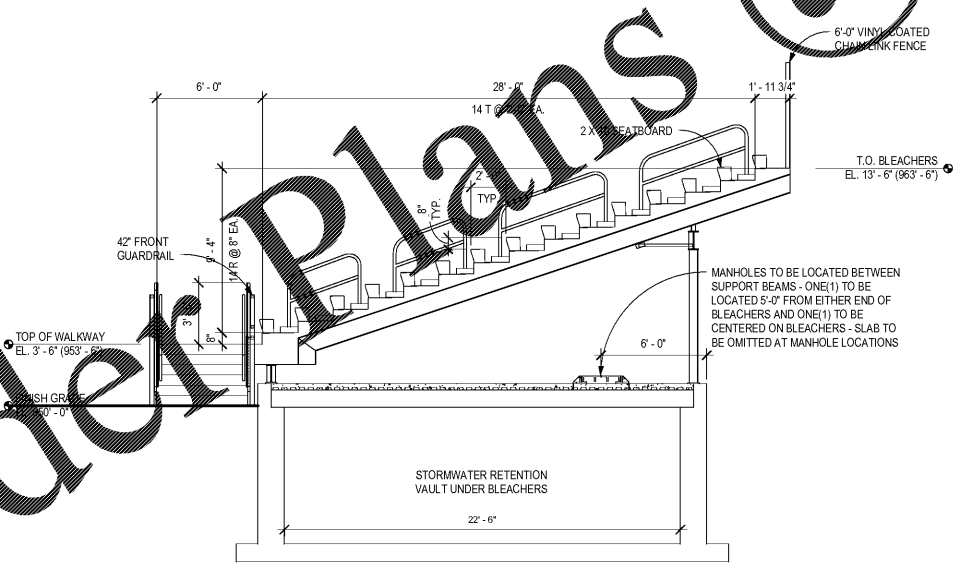


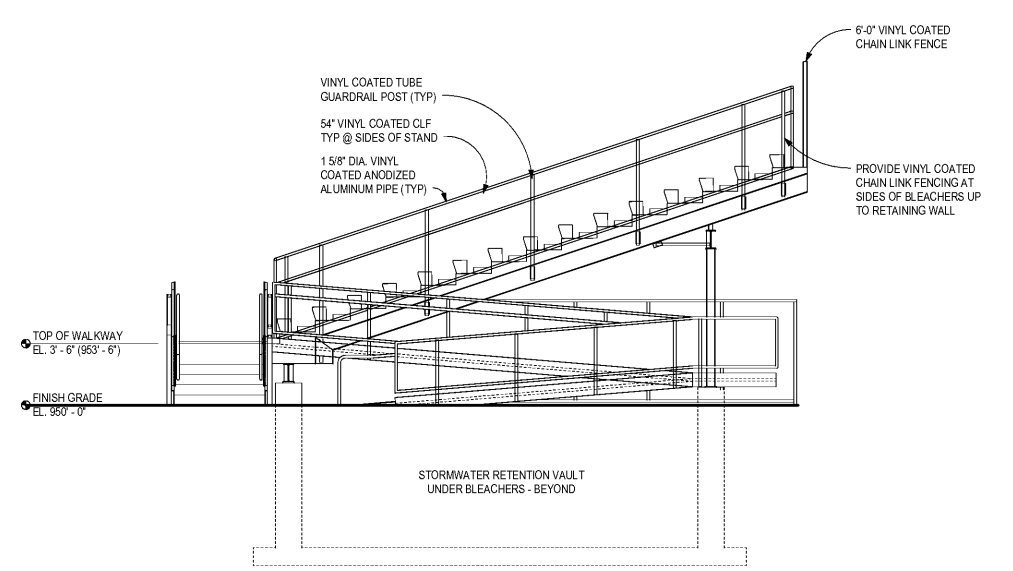
1 VISITOR BLEACHERS PLAN
AS-2.02 1/8" = 1'-0"



2 VISITOR BLEACHERS FRONT ELEVATION
AS-2.02 1/8" = 1'-0"



3 VISITOR BLEACHERS SECTION
AS-2.02 1/4" = 1'-0"



4 VISITOR BLEACHERS SIDE ELEVATION
AS-2.02 1/4" = 1'-0"

CHAPMAN GRIFFIN LANIER SUSSENBACH ARCHITECTS
400 Galleria Pkwy., Suite 100 Atlanta, Ga 30339 Phone: 404.733.5493

CHAPMAN GRIFFIN LANIER SUSSENBACH ARCHITECTS
 REGISTERED ARCHITECTS IN THE STATE OF GEORGIA
 LICENSE NO. 10000
 RELEASED FOR CONSTRUCTION

DATE	NO.	DESCRIPTION
01/27/18		CODE PRELIMINARY SUBMITTAL DESIGN DEVELOPMENT
01/19/18		CODE PRELIMINARY SUBMITTAL DESIGN DEVELOPMENT
09/17/18		CODE CHECK - SET/ PERMIT SET
10/18/18		FINAL CODE SUBMITTAL ISSUED FOR PROPOSAL

RIVERWOOD HIGH SCHOOL PHASE 3-8 AUDITORIUM/GYMNASIUM ADDITION

5900 RAIDER DRIVE NW SANDY SPRINGS, GA 30328
FULTON COUNTY SCHOOLS RFP NO. 411-19

VISITORS BLEACHERS - BID ALT 1

PROJECT NO. 16015.02
DATE: 09/17/18
DRAWN BY: Author
CHECKED BY: Checker

AS-2.02

Order Plans @ www.LDIDLine.com