



CHAPMAN GRIFFIN LANIER SUSENBACH ARCHITECTS  
 REGISTERED ARCHITECTS IN THE STATE OF GEORGIA  
 2018

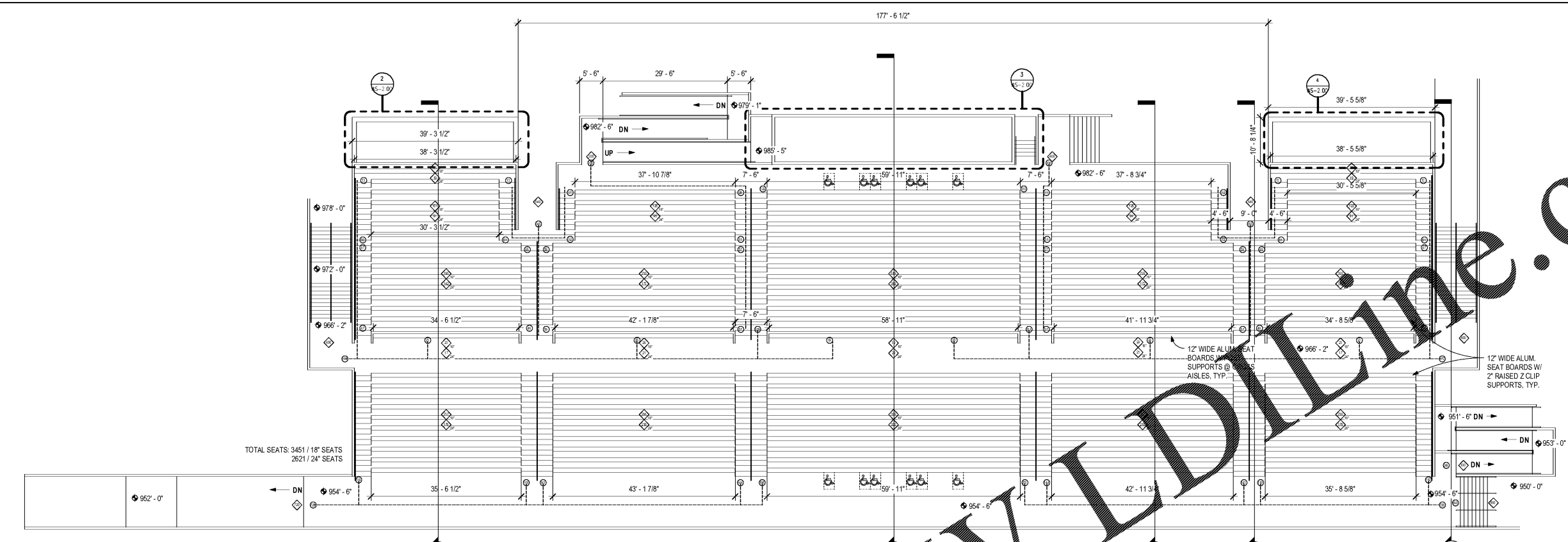


DATE	NO.	DESCRIPTION
01/27/18	001	SCHEMATIC DEVELOPMENT
01/19/18	002	DESIGN DEVELOPMENT
02/17/18	003	PERMIT SET
07/18/18	004	CONSTRUCTION DOCUMENTS
11/01/18	005	FINAL GDC SUBMITTAL ISSUED FOR PROPOSAL

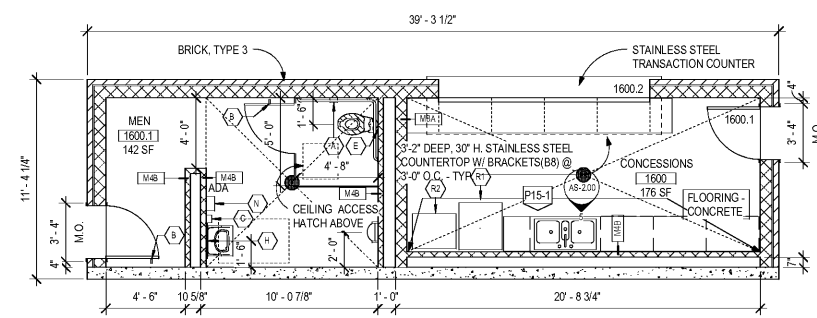
DOE FACILITY CODE: 660-3086  
 RIVERWOOD HIGH SCHOOL PHASE 3-B  
 AUDITORIUM/GYMNASIUM ADDITION  
 5900 RAIDER DRIVE NW SANDY SPRINGS, GA 30328  
 FULTON COUNTY SCHOOLS RFP NO. 411-19

PROJECT NO. 16015.02  
 DATE: 09/17/18  
 DRAWN BY: Author  
 CHECKED BY: Checker

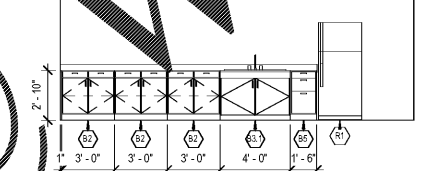
AS-2.00



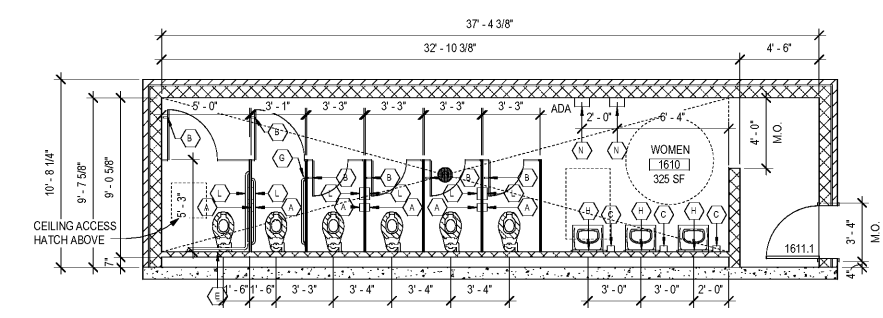
1 HOME BLEACHERS - PLAN  
 AS-2.00 3/32\"/>



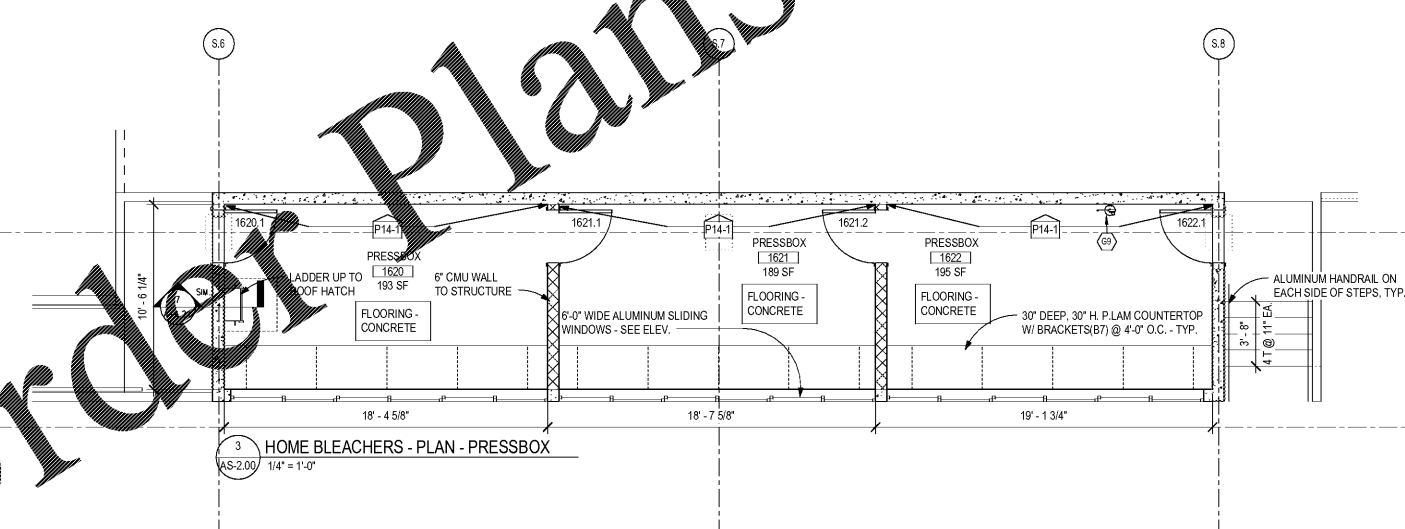
2 HOME BLEACHERS - PLAN - CONCESSIONS  
 AS-2.00 1/4\"/>



3 HOME BLEACHERS - CONCESSIONS CASEWORK ELEVATION  
 AS-2.00 1/4\"/>



4 HOME BLEACHERS - PLAN - RESTROOMS  
 AS-2.00 1/4\"/>



5 HOME BLEACHERS - PLAN - PRESSBOX  
 AS-2.00 1/4\"/>

ITEM	D X W X H	DESCRIPTION	COMMENTS	MODEL
B1	24 X 30 X 34	BASE CABINET	P. LAMINATE COUNTERTOP	D1123
B2	24 X 36 X 36	BASE CABINET	P. LAMINATE COUNTERTOP	D1123
B3	24 X 48 X 36	SINK BASE CABINET	P. LAMINATE COUNTERTOP	B2502
B3.1	24 X 48 X 36	SINK BASE CABINET	P. LAMINATE COUNTERTOP	B2502
B4	24 X 36 X 36	SINK BASE CABINET	P. LAMINATE COUNTERTOP	B2502
B5	24 X 18 X 34	DRAWER BASE CABINET	P. LAMINATE COUNTERTOP	D3003
B6	24 X 36 X 34	KNEE SPACE	ADA ACCESSIBLE	B2542
B7	24 X 1.5 X 24	COUNTER BRACKET	1/8\"/>	
B8	18 X 1.5 X 24	COUNTER BRACKET	1/8\"/>	
B9	14 X 36 X 30	WARDROBE CABINET	FLUSH PANEL P.LAM DOORS	W2052
B10	30 X 36 X 84	WARDROBE CABINET	W/ KEYPAD LOCK	T2592
B11	6 X 1.5 X 24	COUNTER BRACKET	1/8\"/>	

ITEM	D X W X H	DESCRIPTION
C1	18 X 36 X 84	METAL SHELVING UNIT
C2	24 X 36 X 84	METAL SHELVING UNIT
C3	12 X 36 X 84	METAL SHELVING UNIT
C4	24 X 48 X 84	METAL SHELVING UNIT
C5	40 X 48 X 31	STORAGE BIN (SEE ATHLETIC EQUIPMENT SPECIFICATION, 11480)

- TOILET ACCESSORY LEGEND**
- (A) TOILET TISSUE DISPENSER, NIC
  - (B) COAT HOOK & BUMPER - NOTE 1
  - (C) SOAP DISPENSER, NIC
  - (D) PAPER TOWEL DISPENSER (NIC EXCEPT IN KITCHEN AREAS)
  - (E) 42\"/>
- NOTE:  
 1. MOUNT STAFF TOILET COAT HOOKS @ 48\"/>

Order Plans

WWW.LDLINE.COM

CHAPMAN GRIFFIN LANIER SUSENBACH ARCHITECTS  
 400 Galleria Place, Suite 100 Atlanta, Ga 30339 Phone: 404.733.5493