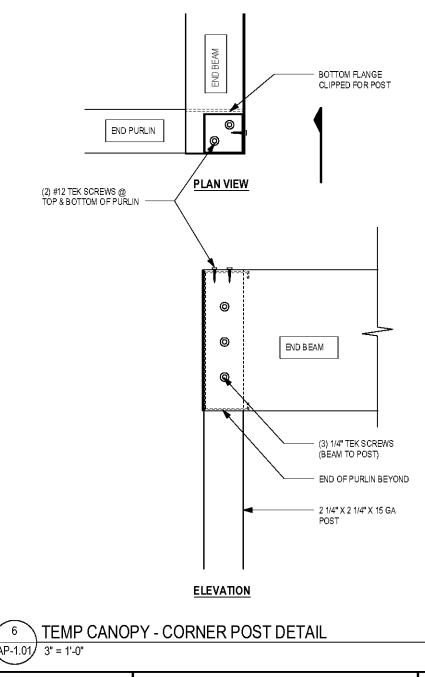
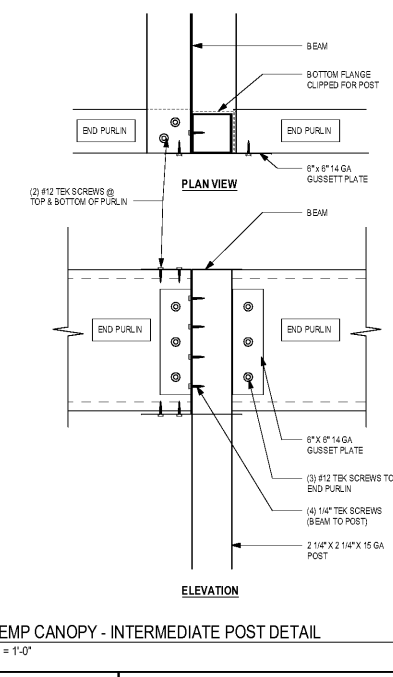
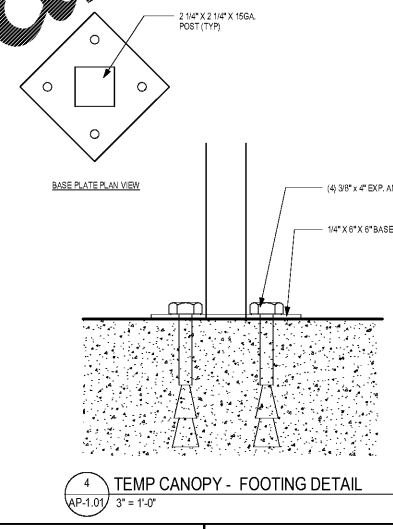
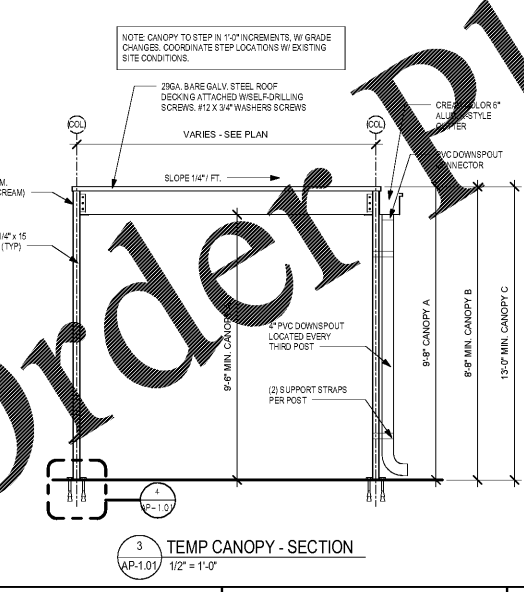


ADD 360 LINEAR FEET OF TEMPORARY CANOPY AS DETAILED IN 3-7/AP-1.01 AS BID ALTERNATE 5



Order Plans @

WWW.AJDLLine.com

Architecture  
Facilitation Design

**CGLS ARCHITECTS**  
CHAPMAN GRIFFIN LANIER SUSENBACH ARCHITECTS INC.  
MEMBER IN CHARGE  
2018  
REGISTERED PROFESSIONAL ARCHITECT  
STATE OF GEORGIA  
REGISTERED ARCHITECT

DATE	NO.	DESCRIPTION
03/27/18		SCHEMATIC DEVELOPMENT
06/19/18		SCHEMATIC DEVELOPMENT
09/17/18		SCHEMATIC DEVELOPMENT
10/18/18		SCHEMATIC DEVELOPMENT
11/01/18		SCHEMATIC DEVELOPMENT

DOE FACILITY CODE: 660-3086  
RIVERWOOD HIGH SCHOOL PHASE 3-8  
AUDITORIUM/GYMNASIUM ADDITION  
5900 RAIDER DRIVE NW SANDY SPRINGS, GA 30328  
FULTON COUNTY SCHOOLS RFP NO. 411-19

PROJECT NO. 16015.02  
DATE: 09/17/18  
DRAWN BY: Author  
CHECKED BY: Checker  
SCALE: AS SHOWN

**AP-1.01**