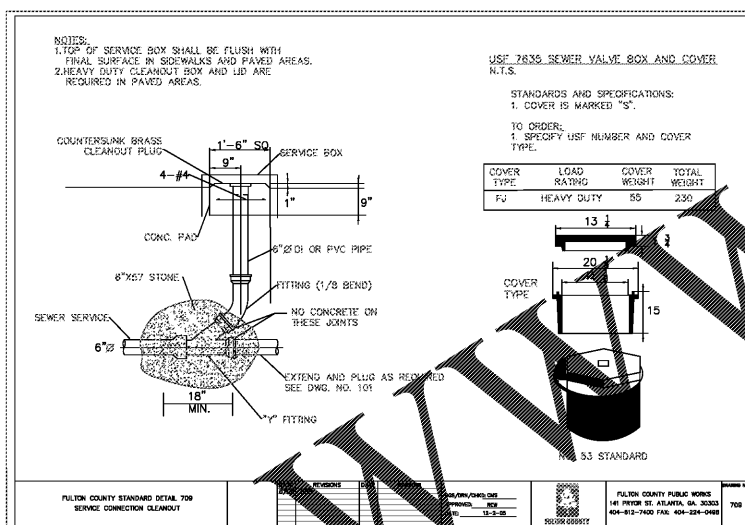
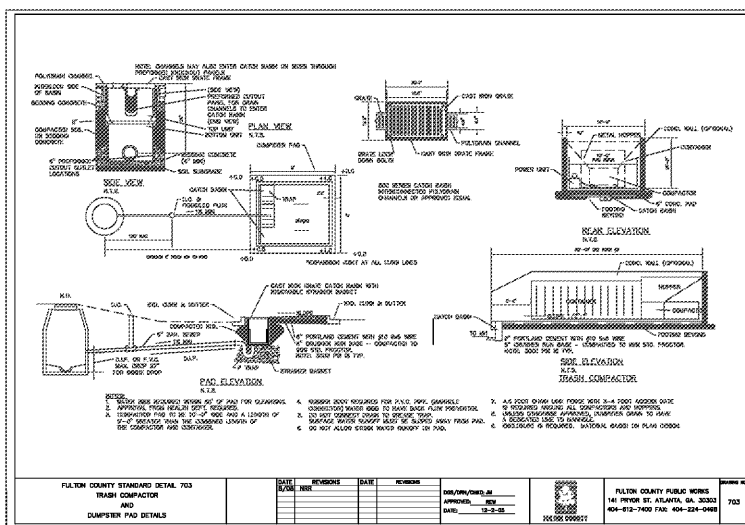
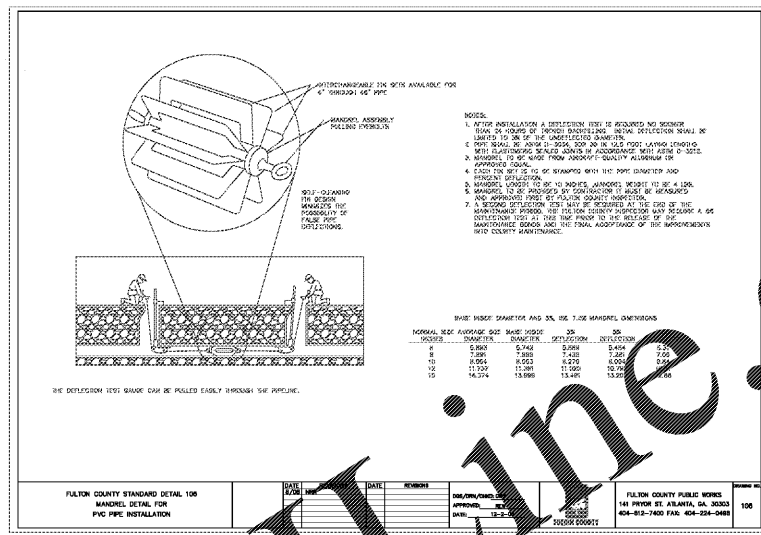
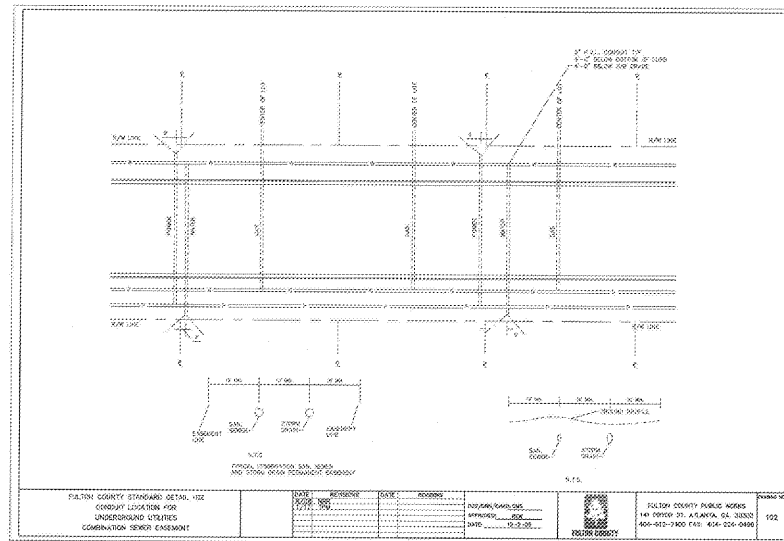
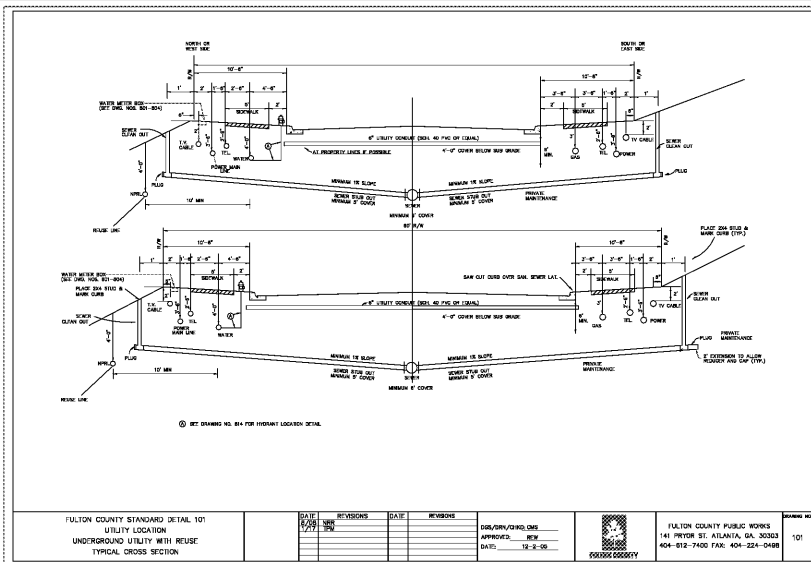


Order Plans @



Architectural
Facilities Design

CGLS ARCHITECTS
CHAPMAN GRIFFIN LANIER SUSSENBACH ARCHITECTS, INC.
2018

RELEASED FOR CONSTRUCTION

BREEDLOVE LAND PLANNING
ALP PROJECT # 1802

GEORGIA REGISTERED PROFESSIONAL ENGINEER
WATSON

DATE	NO.	DESCRIPTION
05/28/18		CODE PRELIMINARY SUBMITTAL / OWNER DESIGN DEVELOPMENT
06/18/18		FOR CONSTRUCTION DOCUMENTS
08/17/18		FINAL CODE CHECK SET / PERMIT SET
10/10/18		FINAL CODE SUBMITTAL ISSUED FOR PROPOSALS
11/01/18		

DOE FACILITY CODE 660-3086

RIVERWOOD HIGH SCHOOL - PHASE 3-8 AUDITORIUM/GYMNASIUM ADDITION

5900 RAIDER DRIVE NW SANDY SPRINGS, GA 30228

FULTON COUNTY SCHOOLS RFP NO. 411-19

SHEET TITLE

FULTON COUNTY STANDARD CONSTRUCTION DETAILS

PROJECT NO. 16015.02

DATE 09.17.18

DRAWN BY: KWW
CHECKED BY: HCB

SHEET NO.

24-HR CONTACT INFORMATION

CHAD A. WORD
FULTON COUNTY SCHOOLS
OWNER'S REPRESENTATIVE
470-254-3355

C-713

WWW.LDITLINE.COM