

DATE	NO.	DESCRIPTION
03/28/18		CODE PRELIMINARY SUBMITTAL / DESIGN DEVELOPMENT
06/18/18		CODE PRELIMINARY SUBMITTAL / DESIGN DEVELOPMENT
08/17/18		CODE CHECK SET / PERMIT SET
10/10/18		FINAL CODE SUBMITTAL
11/01/18		ISSUED FOR PROPOSALS

DOE FACILITY CODE 680-3086
RIVERWOOD HIGH SCHOOL - PHASE 3-8
AUDITORIUM/GYMNASIUM ADDITION
5800 RAIDER DRIVE NW SANDY SPRINGS, GA 30028
FULTON COUNTY SCHOOLS RFP NO. 411-19

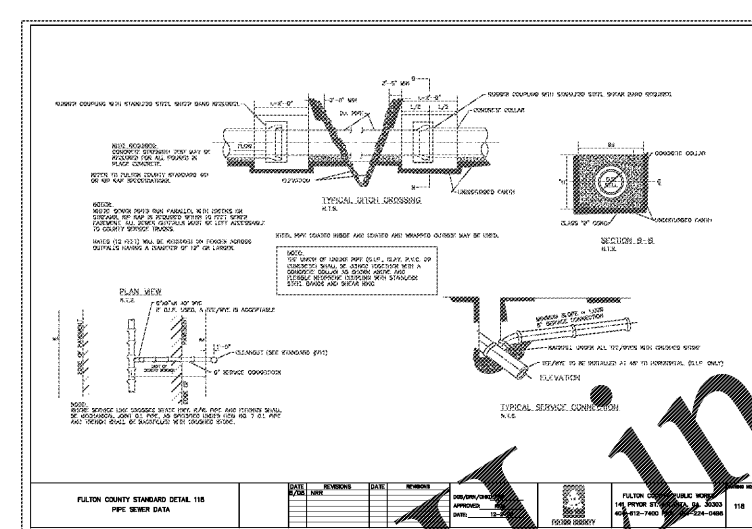
FULTON COUNTY STANDARD CONSTRUCTION DETAILS

PROJECT NO. 16015.02
DATE: 09.17.18
DRAWN BY: KWW
CHECKED BY: HCB

SHEET NO. **C-711**

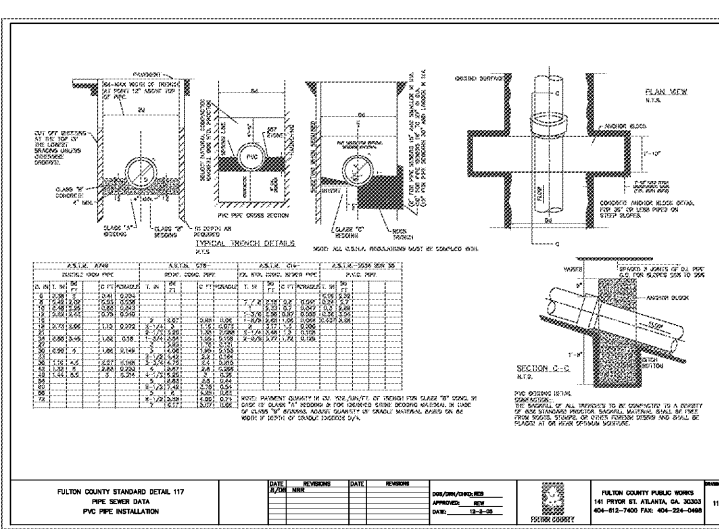
CHAPMAN GRIFFIN LANIER SUSSENBACH ARCHITECTS
400 Galleria Pkwy., Suite 100 Atlanta, Ga. 30339 Phone: 404.733.5493

24-HR CONTACT INFORMATION
CHAD A. WORD
FULTON COUNTY SCHOOLS
OWNER'S REPRESENTATIVE
470-254-3355



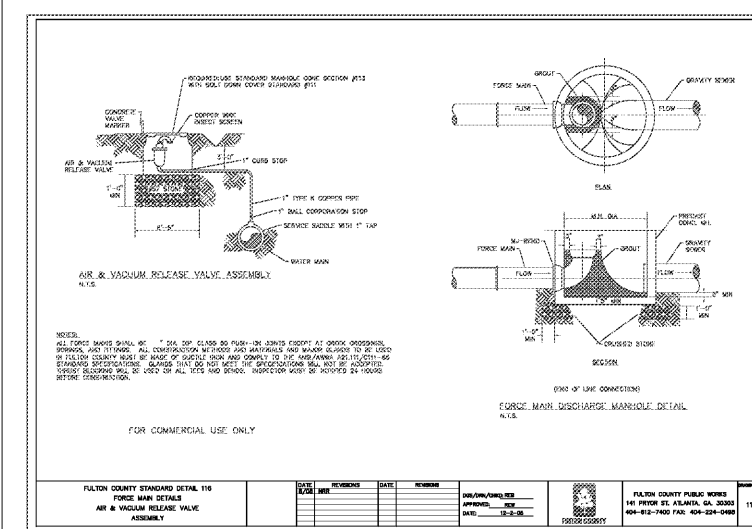
DATE	NO.	DESCRIPTION

FULTON COUNTY PUBLIC WORKS
141 PERIMETER BLVD., SUITE 200
ALANTA, GA 30328
404-812-7400 FAX: 404-224-0489



DATE	NO.	DESCRIPTION

FULTON COUNTY PUBLIC WORKS
141 PERIMETER BLVD., SUITE 200
ALANTA, GA 30328
404-812-7400 FAX: 404-224-0489



DATE	NO.	DESCRIPTION

FULTON COUNTY PUBLIC WORKS
141 PERIMETER BLVD., SUITE 200
ALANTA, GA 30328
404-812-7400 FAX: 404-224-0489

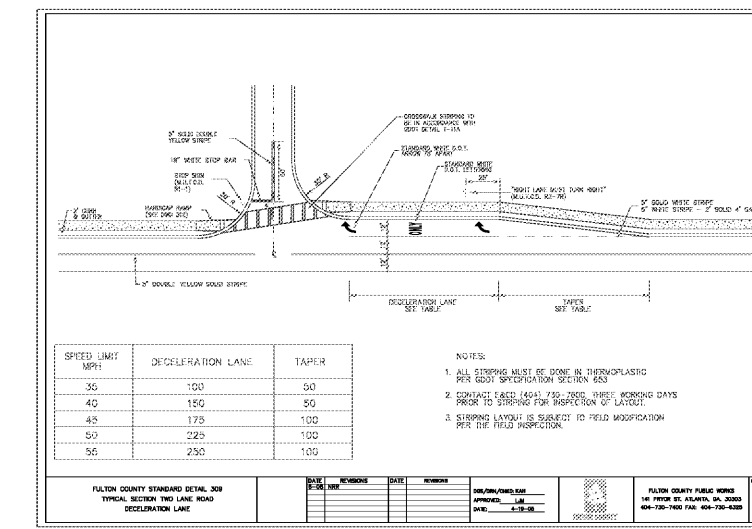
CONCRETE REQUIRED TO RESIST UPWARD THRUST

THRUST (KIP)	THICKNESS (IN)	CONCRETE REQUIRED (CY)
10	12	0.04
15	12	0.06
20	12	0.08
25	12	0.10
30	12	0.12
35	12	0.14
40	12	0.16
45	12	0.18
50	12	0.20
55	12	0.22
60	12	0.24
65	12	0.26
70	12	0.28
75	12	0.30
80	12	0.32
85	12	0.34
90	12	0.36
95	12	0.38
100	12	0.40

DATE	NO.	DESCRIPTION

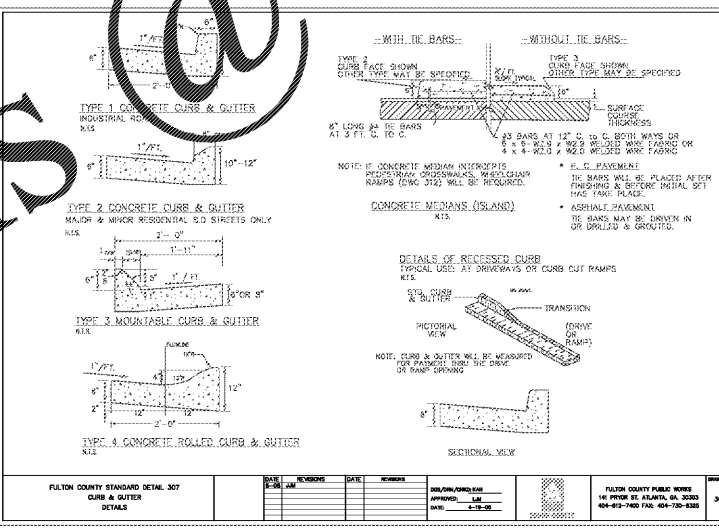
FULTON COUNTY PUBLIC WORKS
141 PERIMETER BLVD., SUITE 200
ALANTA, GA 30328
404-812-7400 FAX: 404-224-0489

WWW.LDIDLINE.COM



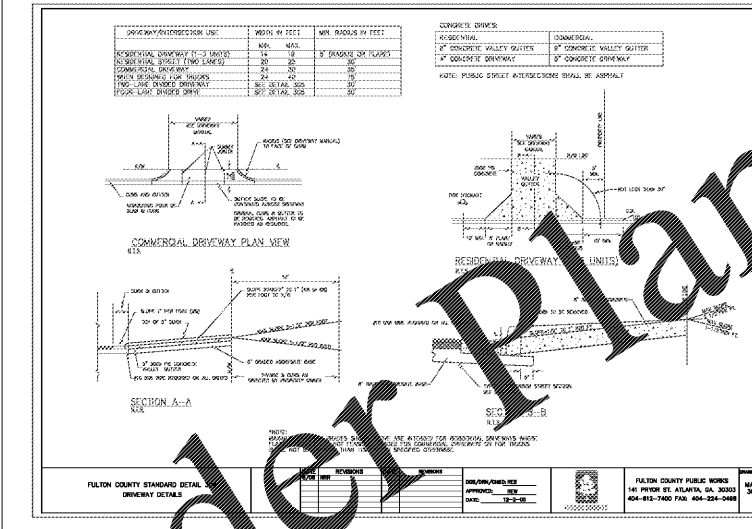
DATE	NO.	DESCRIPTION

FULTON COUNTY PUBLIC WORKS
141 PERIMETER BLVD., SUITE 200
ALANTA, GA 30328
404-812-7400 FAX: 404-224-0489



DATE	NO.	DESCRIPTION

FULTON COUNTY PUBLIC WORKS
141 PERIMETER BLVD., SUITE 200
ALANTA, GA 30328
404-812-7400 FAX: 404-224-0489



DATE	NO.	DESCRIPTION

FULTON COUNTY PUBLIC WORKS
141 PERIMETER BLVD., SUITE 200
ALANTA, GA 30328
404-812-7400 FAX: 404-224-0489

Order Plans @