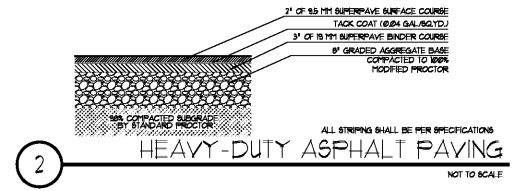
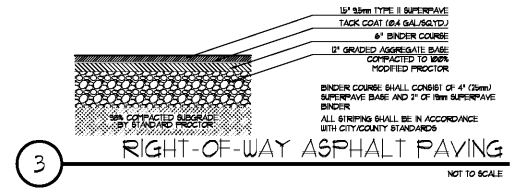


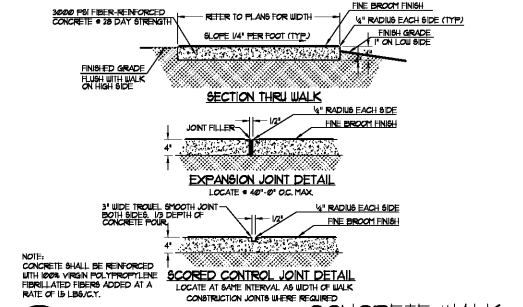
1 MEDIUM DUTY ASPHALT PAVING
NOT TO SCALE



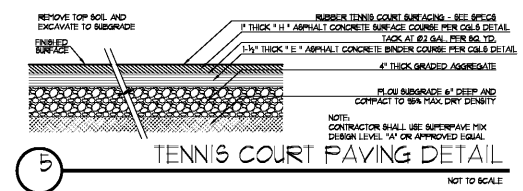
2 HEAVY-DUTY ASPHALT PAVING
NOT TO SCALE



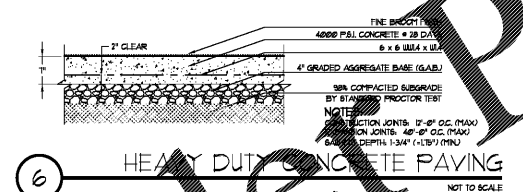
3 RIGHT-OF-WAY ASPHALT PAVING
NOT TO SCALE



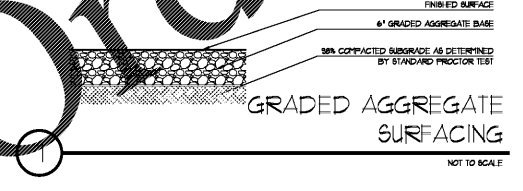
4 CONCRETE WALK
NOT TO SCALE



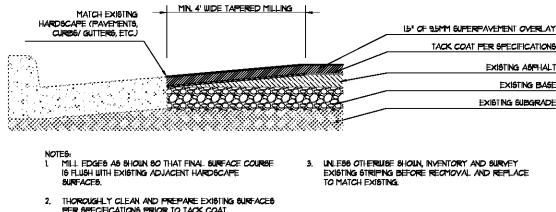
5 TENNIS COURT PAVING DETAIL
NOT TO SCALE



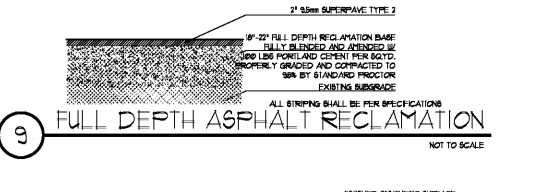
6 HEAVY DUTY CONCRETE PAVING
NOT TO SCALE



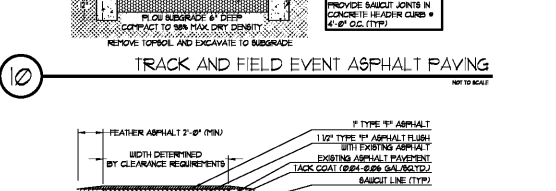
7 GRADED AGGREGATE SURFACING
NOT TO SCALE



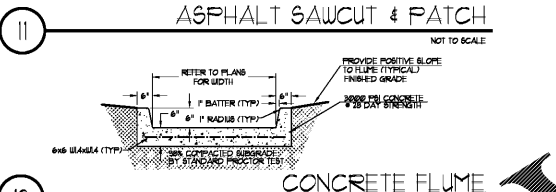
8 ASPHALT RESURFACING
NOT TO SCALE



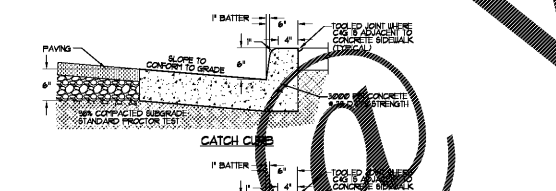
9 FULL DEPTH ASPHALT RECLAMATION
NOT TO SCALE



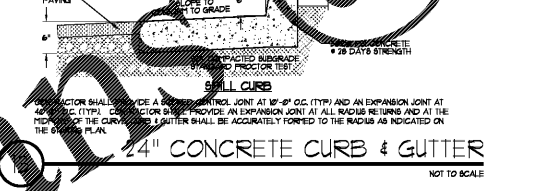
10 TRACK AND FIELD EVENT ASPHALT PAVING
NOT TO SCALE



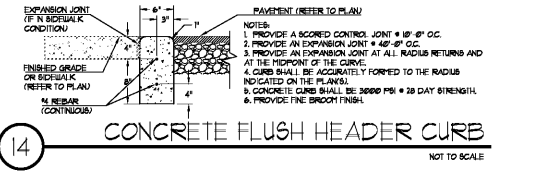
11 ASPHALT SAWCUT & PATCH
NOT TO SCALE



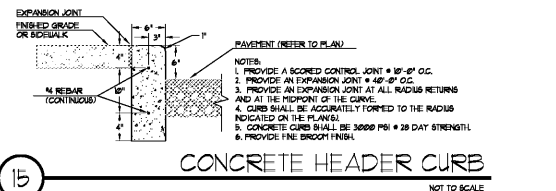
12 CONCRETE FLUME
NOT TO SCALE



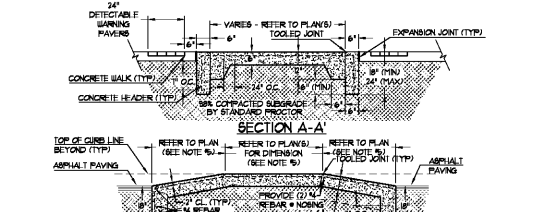
13 24\"/>



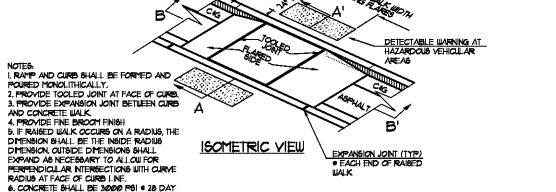
14 CONCRETE FLUSH HEADER CURB
NOT TO SCALE



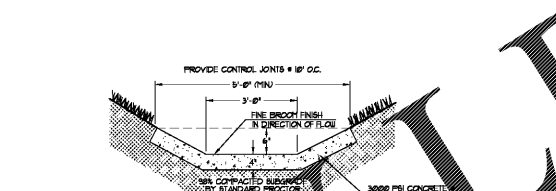
15 CONCRETE HEADER CURB
NOT TO SCALE



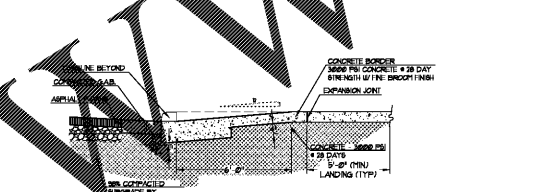
16 RAISED CONCRETE WALK
NOT TO SCALE



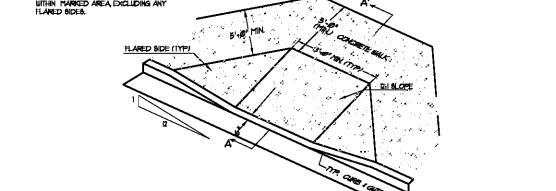
17 CONCRETE FREE-FORMED FLUME
NOT TO SCALE



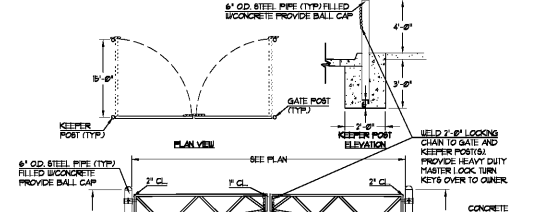
18 FLARED CURB RAMP
NOT TO SCALE



19 PRECAST WHEEL STOP
NOT TO SCALE



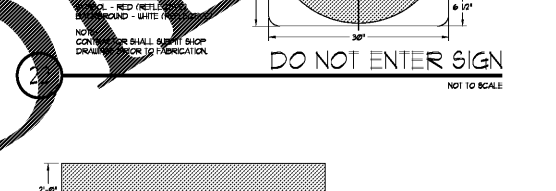
20 VINYL COATED CHAIN LINK FENCE
NOT TO SCALE



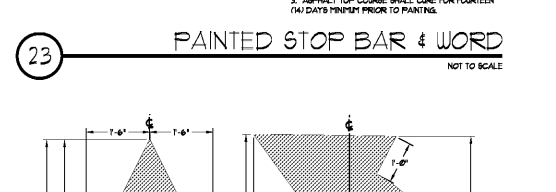
21 SECURITY GATE - DOUBLE SWING
NOT TO SCALE



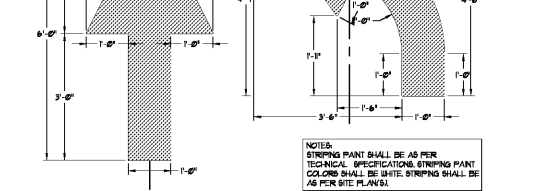
23 PAINTED STOP BAR & WORD
NOT TO SCALE



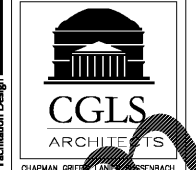
24 TRAFFIC STRIPING - ARROWS
NOT TO SCALE



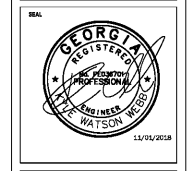
25 GDOT STD T-11A CROSSWALK STRIPING
NOT TO SCALE



26 FLAGPOLE
NOT TO SCALE



CHAPMAN GRIFFIN LANIER SUSSENBACH ARCHITECTS
16015.02



DATE	NO.	DESCRIPTION
03/28/18		CODE PRELIMINARY SUBMITTAL 7 DESIGN DEVELOPMENT
06/18/18		CODE PRELIMINARY SUBMITTAL 8 CONSTRUCTION DOCUMENTS
08/17/18		CODE CHECK SET / PERMIT SET
10/10/18		FINAL CODE SUBMITTAL
11/01/18		ISSUED FOR PROPOSALS

DOE FACILITY CODE 660-3086
RIVERWOOD HIGH SCHOOL - PHASE 3-8
AUDITORIUM/GYMNASIUM ADDITION
5800 RAIDER DRIVE NW SANDY SPRINGS, GA 30328
FULTON COUNTY SCHOOLS RFP NO. 411-19

SITE WORK CONSTRUCTION DETAILS
PROJECT NO. 16015.02
DATE: 09.17.18
DRAWN BY: KWW
CHECKED BY: HOB

C-700

24-HR CONTACT INFORMATION
CHAD A. WORD
FULTON COUNTY SCHOOLS
OWNER'S REPRESENTATIVE
470-254-3355

Order Plans @ WWW.LDPLANS.COM