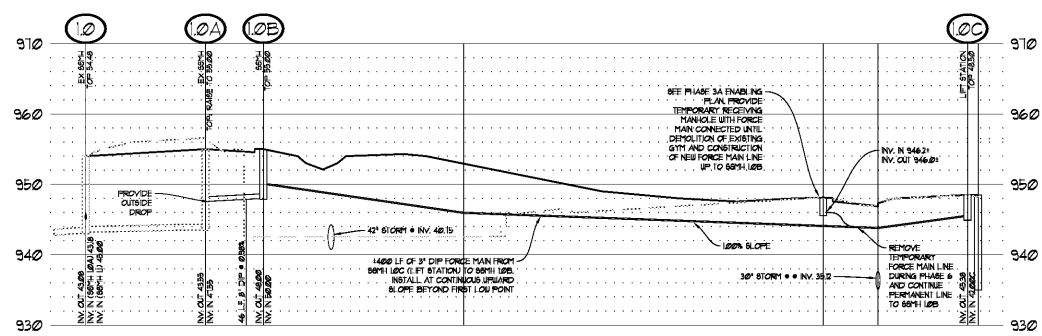
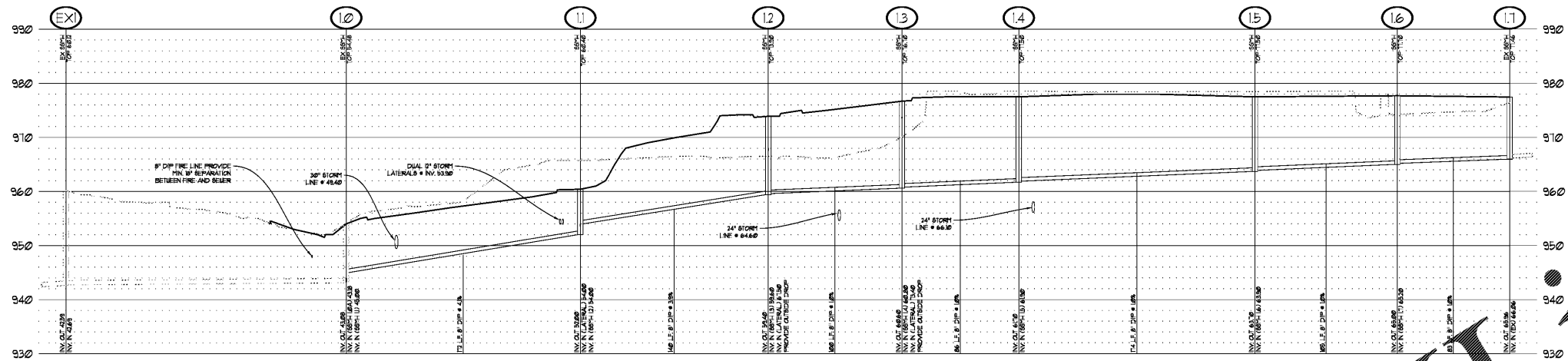


Order Plans @ www.LDILine.com

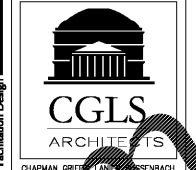
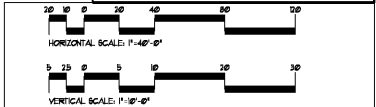


24-HR CONTACT INFORMATION

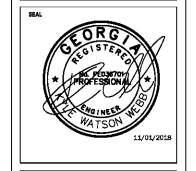
CHAD A. WORD
FULTON COUNTY SCHOOLS
OWNER'S REPRESENTATIVE
470-254-3355

PIPE PROFILE LEGEND

- EXISTING GRADE
- PROPOSED GRADE
- SCP REINFORCED CONCRETE PIPE (CLASS IV)
- DIP DUCTILE IRON PIPE (CLASS 50)
- HDPE HIGH-DENSITY POLYETHYLENE PIPE
- ABT ALUMINUM BRITEL TYPE 2
- 707-65 ALUMINUM BRITEL TYPE 2 (SMOOTH BORE)
- PVC POLY(VINYL CHLORIDE) PIPE (SCHEDULE 40)
- HSF HEADWALL
- DI DROP INLET (PEDISTAL TOP)
- IB INJECTION BOX
- SN SINGLE RING CATCH BASIN
- DNCS DOUBLE RING CATCH BASIN
- CB CATCH BASIN
- SBH BELL HIVE CATCH BASIN
- MSM ORB INLET (SA, D21, 810)
- FEB FLARED END SECTION
- ESB SAFETY END SECTION
- INV. INVERT ELEVATION
- HGL HYDRAULIC GRADE LINE



RELEASED FOR CONSTRUCTION



DATE	NO.	DESCRIPTION
03/28/18		CODE PRELIMINARY SUBMITTAL / DESIGN DEVELOPMENT
05/18/18		CODE PRELIMINARY SUBMITTAL / DESIGN DEVELOPMENT
08/17/18		CODE CHECK SET / PERMIT SET
10/10/18		FINAL CODE SUBMITTAL
11/01/18		ISSUED FOR PROPOSALS

RIVERWOOD HIGH SCHOOL - PHASE 3-8
AUDITORIUM/GYMNASIUM ADDITION
 5900 RAIDER DRIVE NW SANDY SPRINGS, GA 30228
 FULTON COUNTY SCHOOLS RFP NO. 411-19

CHAPMAN GRIFFIN LANIER SUSSENBACH ARCHITECTS
 400 Galleria Pkwy, Suite 100, Atlanta, Ga. 30339, Phone: 404.733.5493

SANITARY SEWER PROFILES

PROJECT NO: 16015.02

DATE: 09.17.18

DRAWN BY: KWW
 CHECKED BY: HOB

SHEET NO: **C-510**