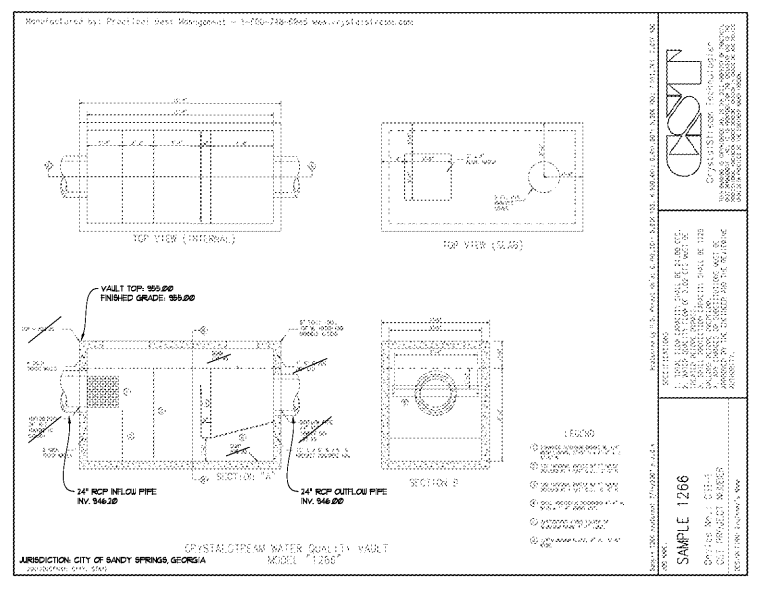


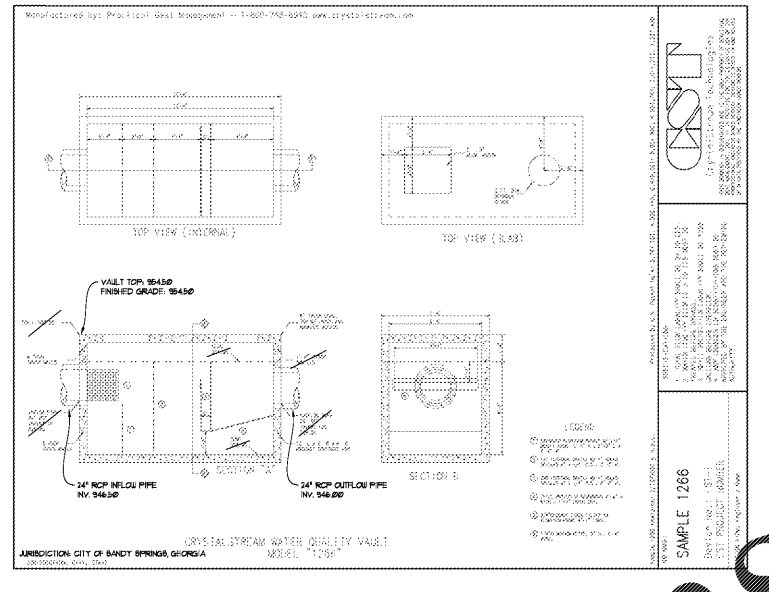
Order Plans



DESIGN INFORMATION:
 DRAINAGE AREA: 180 ACRES
 PERVIOUS AREA: 144 ACRES
 TIME OF CONC: 5 MINUTES
 50 PEAK FLOW RATE: 319 CFS
 25-YR FLOW RATE: 846 CFS

INFORMATION PROVIDED ABOVE IS FOR REFERENCE ONLY. CONTRACTOR SHALL PROVIDE SHOP DRAWINGS FROM MANUFACTURER FOR REVIEW AND APPROVAL PRIOR TO ORDERING. CONTRACTOR SHALL BE RESPONSIBLE FOR ALL RISERS REQUIRED TO ADJUST STRUCTURE ACCESS TOPS TO FINISHED GRADE WHERE NOT PROVIDED BY THE MANUFACTURER AS PART OF THE WATER QUALITY UNIT.

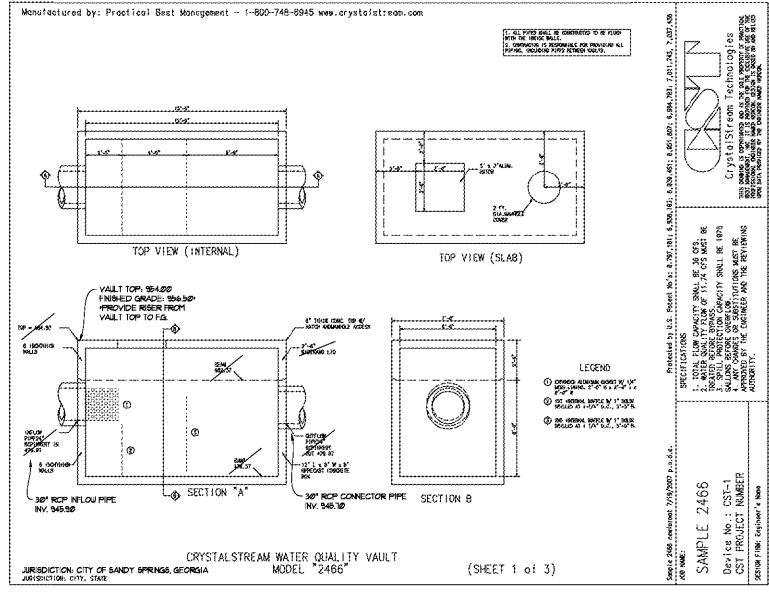
CRYSTAL STREAM MODEL 1266 - STRUCTURE #C2
 NOT TO SCALE



DESIGN INFORMATION:
 DRAINAGE AREA: 180 ACRES
 PERVIOUS AREA: 144 ACRES
 TIME OF CONC: 5 MINUTES
 50 PEAK FLOW RATE: 319 CFS
 25-YR FLOW RATE: 846 CFS

INFORMATION PROVIDED ABOVE IS FOR REFERENCE ONLY. CONTRACTOR SHALL PROVIDE SHOP DRAWINGS FROM MANUFACTURER FOR REVIEW AND APPROVAL PRIOR TO ORDERING. CONTRACTOR SHALL BE RESPONSIBLE FOR ALL RISERS REQUIRED TO ADJUST STRUCTURE ACCESS TOPS TO FINISHED GRADE WHERE NOT PROVIDED BY THE MANUFACTURER AS PART OF THE WATER QUALITY UNIT.

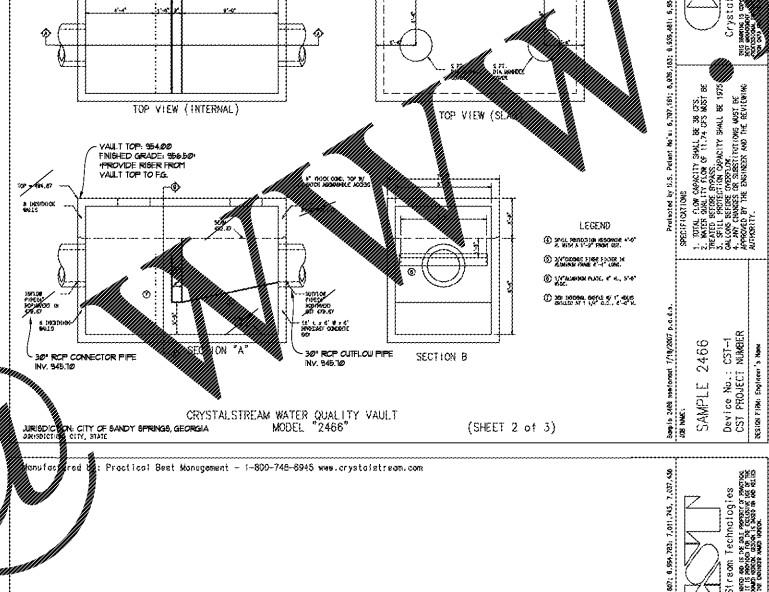
CRYSTAL STREAM MODEL 1266 - STRUCTURE #C3
 NOT TO SCALE



DESIGN INFORMATION:
 DRAINAGE AREA: 443 ACRES
 PERVIOUS AREA: 339 ACRES
 TIME OF CONC: 5 MINUTES
 50 PEAK FLOW RATE: 846 CFS
 25-YR FLOW RATE: 2148 CFS

INFORMATION PROVIDED ABOVE IS FOR REFERENCE ONLY. CONTRACTOR SHALL PROVIDE SHOP DRAWINGS FROM MANUFACTURER FOR REVIEW AND APPROVAL PRIOR TO ORDERING. CONTRACTOR SHALL BE RESPONSIBLE FOR ALL RISERS REQUIRED TO ADJUST STRUCTURE ACCESS TOPS TO FINISHED GRADE WHERE NOT PROVIDED BY THE MANUFACTURER AS PART OF THE WATER QUALITY UNIT.

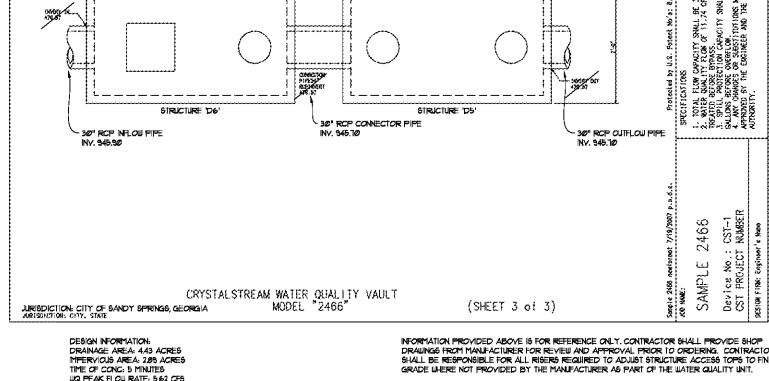
CRYSTAL STREAM MODEL 2466 - STRUCTURES #D5 & D6
 NOT TO SCALE



DESIGN INFORMATION:
 DRAINAGE AREA: 443 ACRES
 PERVIOUS AREA: 339 ACRES
 TIME OF CONC: 5 MINUTES
 50 PEAK FLOW RATE: 846 CFS
 25-YR FLOW RATE: 2148 CFS

INFORMATION PROVIDED ABOVE IS FOR REFERENCE ONLY. CONTRACTOR SHALL PROVIDE SHOP DRAWINGS FROM MANUFACTURER FOR REVIEW AND APPROVAL PRIOR TO ORDERING. CONTRACTOR SHALL BE RESPONSIBLE FOR ALL RISERS REQUIRED TO ADJUST STRUCTURE ACCESS TOPS TO FINISHED GRADE WHERE NOT PROVIDED BY THE MANUFACTURER AS PART OF THE WATER QUALITY UNIT.

CRYSTAL STREAM MODEL 2466 - STRUCTURES #D5 & D6
 NOT TO SCALE



DESIGN INFORMATION:
 DRAINAGE AREA: 443 ACRES
 PERVIOUS AREA: 339 ACRES
 TIME OF CONC: 5 MINUTES
 50 PEAK FLOW RATE: 846 CFS
 25-YR FLOW RATE: 2148 CFS

INFORMATION PROVIDED ABOVE IS FOR REFERENCE ONLY. CONTRACTOR SHALL PROVIDE SHOP DRAWINGS FROM MANUFACTURER FOR REVIEW AND APPROVAL PRIOR TO ORDERING. CONTRACTOR SHALL BE RESPONSIBLE FOR ALL RISERS REQUIRED TO ADJUST STRUCTURE ACCESS TOPS TO FINISHED GRADE WHERE NOT PROVIDED BY THE MANUFACTURER AS PART OF THE WATER QUALITY UNIT.

CRYSTAL STREAM MODEL 2466 - STRUCTURES #D5 & D6
 NOT TO SCALE

LDI Line.com

CHAPMAN GRIFFIN LANIER SUSSENBACH ARCHITECTS
 400 Galleria Pkwy, Suite 100, Atlanta, Ga 30339, Phone: 404.733.5493

ARCHITECTURE
 ARCHITECTURAL
 FACILITY DESIGN

CGLS ARCHITECTS
 CHAPMAN GRIFFIN LANIER SUSSENBACH ARCHITECTS, INC.
 2018

BREEDLOVE LAND PLANNING
 LAND PLANNING
 CONSULTANTS

GEORGIA REGISTERED PROFESSIONAL ENGINEER
 WATSON
 11/20/2018

DATE	NO.	DESCRIPTION
05/19/18		SCHEMATIC DEVELOPMENT
06/14/18		SCHEMATIC DEVELOPMENT
09/17/18		SCHEMATIC DEVELOPMENT
10/10/18		PERMIT SET
11/01/18		ISSUED FOR PROPOSAL

RIVERWOOD HIGH SCHOOL - PHASE 3-8
AUDITORIUM/GYMNASIUM ADDITION

5900 RAIDER DRIVE NW SANDY SPRINGS, GA 30228
 FULTON COUNTY SCHOOLS RFP NO. 411-19

WATER QUALITY UNITS DETAILS

PROJECT NO: 16015.02
 DATE: 09.17.18
 DRAWN BY: KTW
 CHECKED BY: HOB

C-331