



DATE	NO.	DESCRIPTION
03/28/18		CODE PRELIMINARY SUBMITTAL / DESIGN DEVELOPMENT
06/18/18		CODE PRELIMINARY SUBMITTAL / DESIGN DEVELOPMENT
08/17/18		CODE CHECK SET / PERMIT SET
10/10/18		FINAL CODE SUBMITTAL / PERMIT SET
11/01/18		ISSUED FOR PROPOSALS

DOE FACILITY CODE 660-3086
RIVERWOOD HIGH SCHOOL - PHASE 3-8
AUDITORIUM/GYMNASIUM ADDITION
5800 RAIDER DRIVE NW SANDY SPRINGS, GA 30328
FULTON COUNTY SCHOOLS RFP NO. 411-19

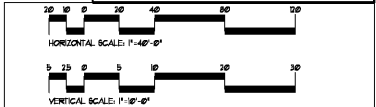
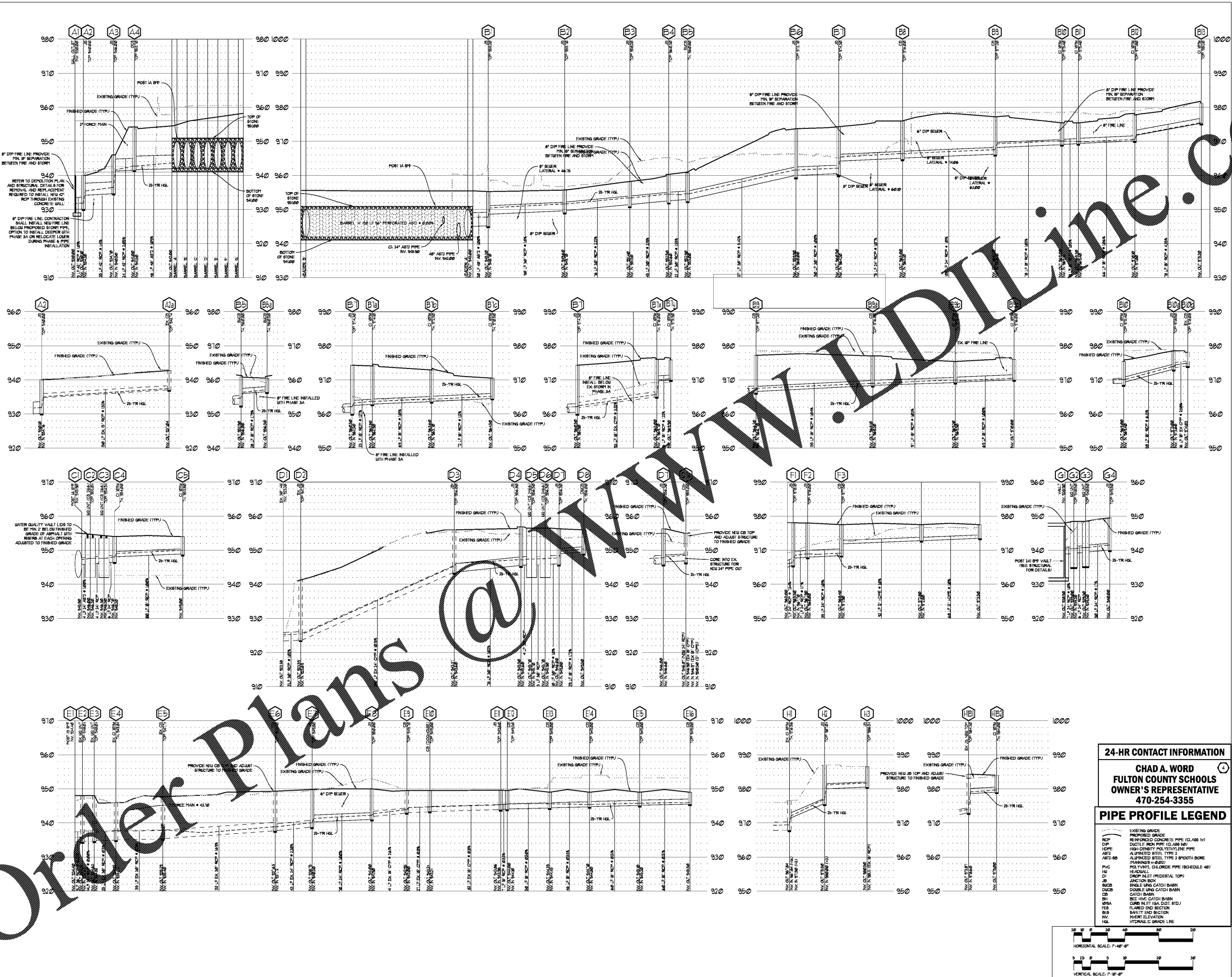
CHAPMAN GRIFFIN LANIER SUSSENBACH ARCHITECTS
400 Galleria Parkway, Suite 100 Atlanta, Ga 30339 Phone: 404.733.5493

24-HR CONTACT INFORMATION
CHAD A. WORD
FULTON COUNTY SCHOOLS
OWNER'S REPRESENTATIVE
470-254-3355

PIPE PROFILE LEGEND

- EXISTING GRADE
- PROPOSED GRADE
- REINFORCED CONCRETE PIPE (CLASS IV)
- DUCTILE IRON PIPE (CLASS 50)
- HIGH-DENSITY POLYETHYLENE PIPE
- ALUMINUM BIEEL TYPE 2
- SMOOTH BORE
- POLYVINYL CHLORIDE PIPE (SCHEDULE 40)
- HEADWALL
- DROP INLET (PRECAST TOP)
- JUNCTION BOX
- SINGLE RING CATCH BASIN
- DOUBLE RING CATCH BASIN
- CATCH BASIN
- BEE HIVE CATCH BASIN
- ORBITAL INLET (SA, D20, 810)
- FLARED END SECTION
- SAFETY END SECTION
- INVERT ELEVATION
- HYDRAULIC GRADE LINE

C-322



Order Plans @ KWW