

DATE	NO.	DESCRIPTION
03/28/18		CODE PRELIMINARY SUBMITTAL / DESIGN DEVELOPMENT
06/18/18		CODE PRELIMINARY SUBMITTAL / DESIGN DEVELOPMENT
08/17/18		CODE CHECK SET / PERMIT SET
10/10/18		FINAL CODE SUBMITTAL
11/01/18		ISSUED FOR PROPOSALS

DOE FACILITY CODE 660-3086
 RIVERWOOD HIGH SCHOOL - PHASE 3-8
 AUDITORIUM/GYMNASIUM ADDITION
 5900 RAIDER DRIVE NW SANDY SPRINGS, GA 30228
 FULTON COUNTY SCHOOLS RFP NO. 411-19

SHEET TITLE
WALL ELEVATIONS

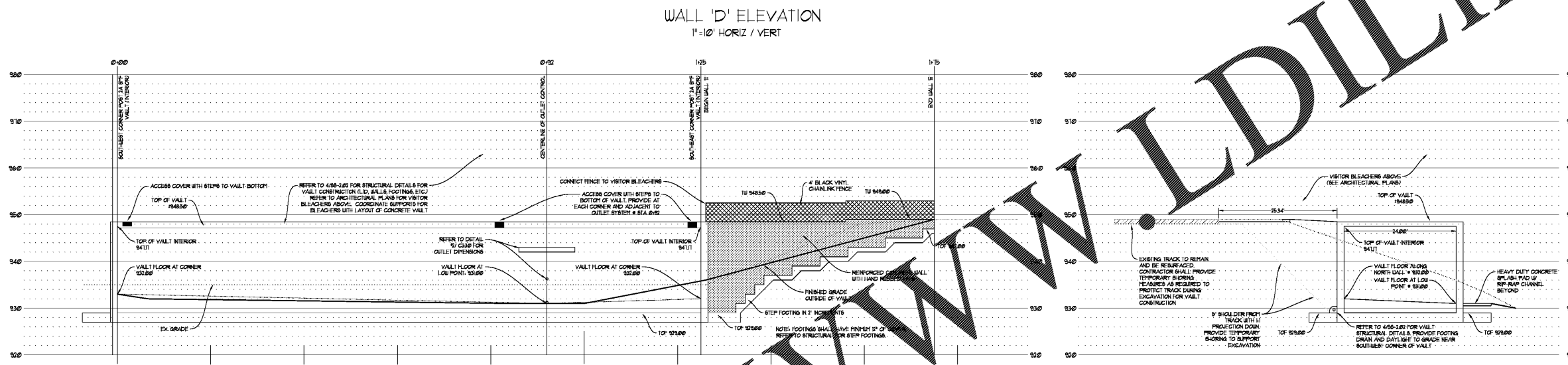
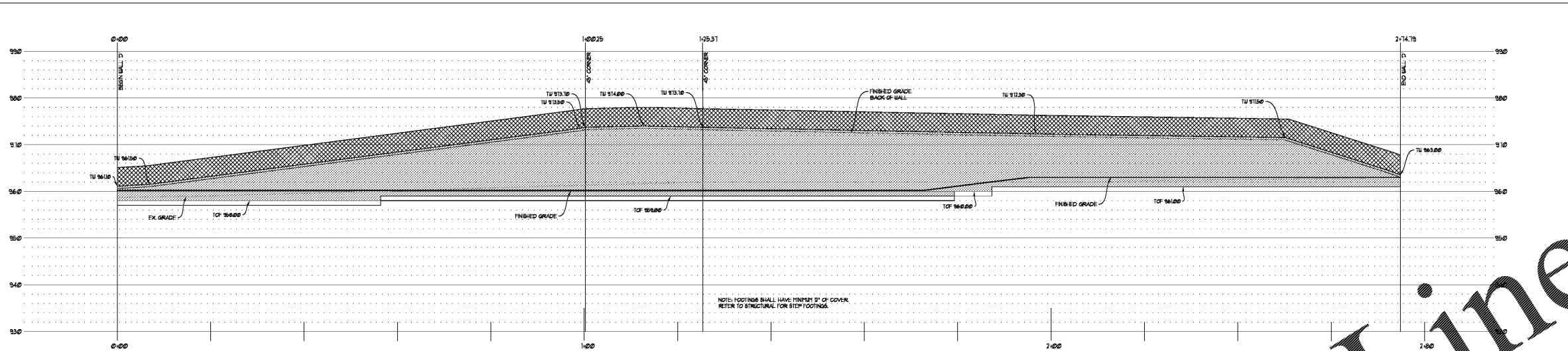
PROJECT NO.
 16015.02

DATE
 09.17.18

DRAWN BY: KWW
 CHECKED BY: HOB

SHEET NO.
C-312

CHAPMAN GRIFFIN LANIER SUSSENBACH ARCHITECTS
 400 Galleria Pkwy, Suite 100, Atlanta, Ga 30339, Phone: 404.733.5493



REFER TO STRUCTURAL DRAWINGS FOR RETAINING WALL DETAILS.

SEE 1/SS-2.03 FOR TYPICAL SITE WALL SECTION.

SEE 2/SS-2.03 FOR SITE WALL 'A'.

SEE 4/S-3.17 FOR PORTION OF WALL 'B' ALONG LENGTH OF BUILDING.

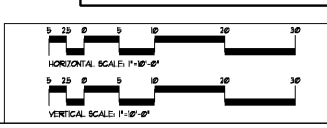
SEE 3/SS-2.03 FOR DETAILS OF WALL DEMOLITION & RECONSTRUCTION AT 'A' STORM SYSTEM OUTFALL.

SEE 3/SS-2.02 FOR DETAILS OF DETENTION VAULT BENEATH VISITOR BLEACHERS.

NOTE: DEPTHS AND LOCATIONS OF STRUCTURAL FOOTINGS SHOWN ARE APPROXIMATE. PROVIDE MIN. 12" COVER OVER FOOTINGS.

REFER TO ARCHITECTURAL DETAILS FOR RAILING ALONG TOPS OF WALLS

24-HR CONTACT INFORMATION
 CHAD A. WORD
 FULTON COUNTY SCHOOLS
 OWNER'S REPRESENTATIVE
 470-254-3355



Order Plans @ www.LDILine.com

www.LDILine.com