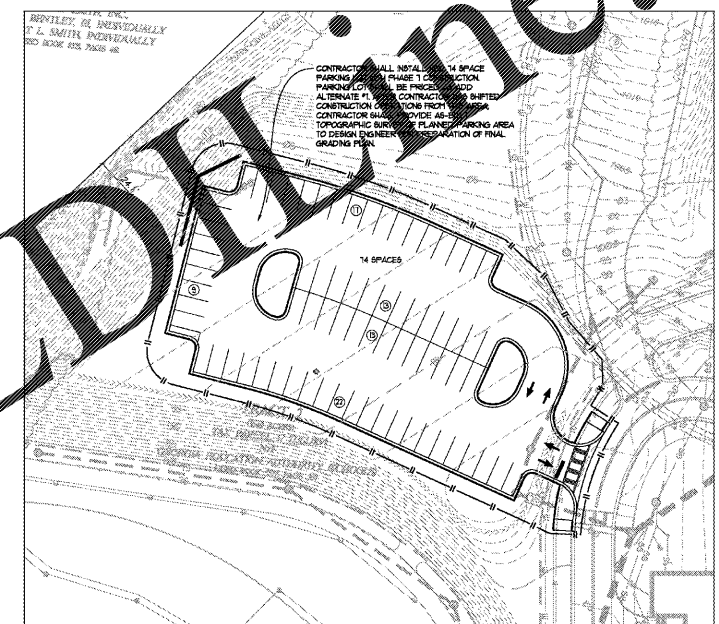
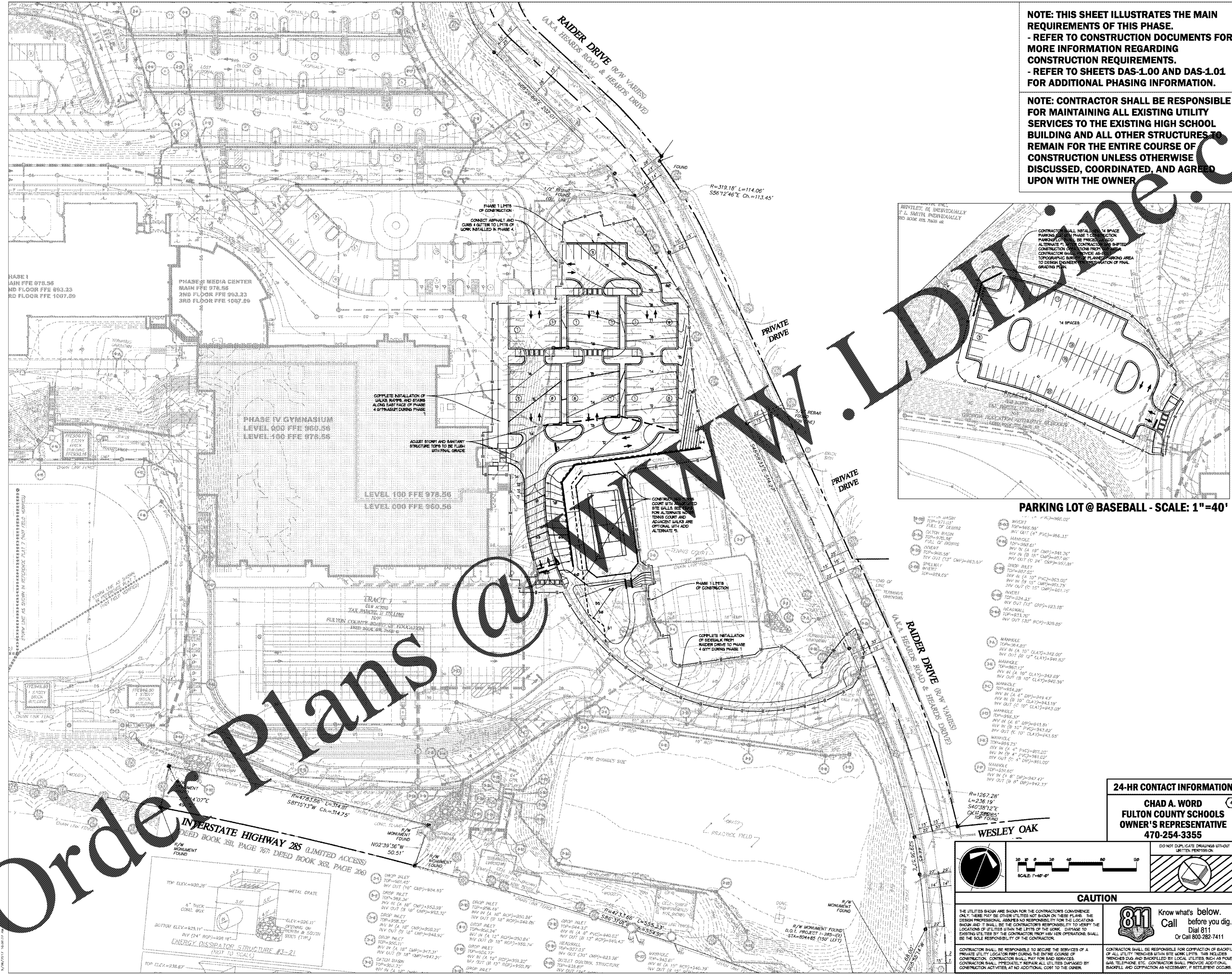


Order Plans @

NOTE: THIS SHEET ILLUSTRATES THE MAIN REQUIREMENTS OF THIS PHASE.
 - REFER TO CONSTRUCTION DOCUMENTS FOR MORE INFORMATION REGARDING CONSTRUCTION REQUIREMENTS.
 - REFER TO SHEETS DAS-1.00 AND DAS-1.01 FOR ADDITIONAL PHASING INFORMATION.

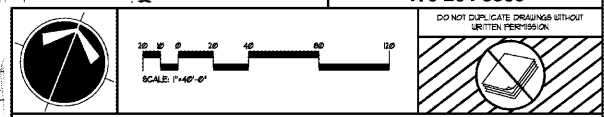
NOTE: CONTRACTOR SHALL BE RESPONSIBLE FOR MAINTAINING ALL EXISTING UTILITY SERVICES TO THE EXISTING HIGH SCHOOL BUILDING AND ALL OTHER STRUCTURES TO REMAIN FOR THE ENTIRE COURSE OF CONSTRUCTION UNLESS OTHERWISE DISCUSSED, COORDINATED, AND AGREED UPON WITH THE OWNER.



PARKING LOT @ BASEBALL - SCALE: 1"=40'

- 1. MANHOLE TOP=98.85' INV IN (A 18" DIA) CLAY=98.85' INV OUT (6" DIA) =98.85'
- 2. MANHOLE TOP=98.85' INV IN (A 18" DIA) CLAY=98.85' INV OUT (6" DIA) =98.85'
- 3. MANHOLE TOP=98.85' INV IN (A 18" DIA) CLAY=98.85' INV OUT (6" DIA) =98.85'
- 4. MANHOLE TOP=98.85' INV IN (A 18" DIA) CLAY=98.85' INV OUT (6" DIA) =98.85'
- 5. MANHOLE TOP=98.85' INV IN (A 18" DIA) CLAY=98.85' INV OUT (6" DIA) =98.85'
- 6. MANHOLE TOP=98.85' INV IN (A 18" DIA) CLAY=98.85' INV OUT (6" DIA) =98.85'
- 7. MANHOLE TOP=98.85' INV IN (A 18" DIA) CLAY=98.85' INV OUT (6" DIA) =98.85'
- 8. MANHOLE TOP=98.85' INV IN (A 18" DIA) CLAY=98.85' INV OUT (6" DIA) =98.85'
- 9. MANHOLE TOP=98.85' INV IN (A 18" DIA) CLAY=98.85' INV OUT (6" DIA) =98.85'
- 10. MANHOLE TOP=98.85' INV IN (A 18" DIA) CLAY=98.85' INV OUT (6" DIA) =98.85'
- 11. MANHOLE TOP=98.85' INV IN (A 18" DIA) CLAY=98.85' INV OUT (6" DIA) =98.85'
- 12. MANHOLE TOP=98.85' INV IN (A 18" DIA) CLAY=98.85' INV OUT (6" DIA) =98.85'
- 13. MANHOLE TOP=98.85' INV IN (A 18" DIA) CLAY=98.85' INV OUT (6" DIA) =98.85'
- 14. MANHOLE TOP=98.85' INV IN (A 18" DIA) CLAY=98.85' INV OUT (6" DIA) =98.85'
- 15. MANHOLE TOP=98.85' INV IN (A 18" DIA) CLAY=98.85' INV OUT (6" DIA) =98.85'
- 16. MANHOLE TOP=98.85' INV IN (A 18" DIA) CLAY=98.85' INV OUT (6" DIA) =98.85'
- 17. MANHOLE TOP=98.85' INV IN (A 18" DIA) CLAY=98.85' INV OUT (6" DIA) =98.85'
- 18. MANHOLE TOP=98.85' INV IN (A 18" DIA) CLAY=98.85' INV OUT (6" DIA) =98.85'
- 19. MANHOLE TOP=98.85' INV IN (A 18" DIA) CLAY=98.85' INV OUT (6" DIA) =98.85'
- 20. MANHOLE TOP=98.85' INV IN (A 18" DIA) CLAY=98.85' INV OUT (6" DIA) =98.85'
- 21. MANHOLE TOP=98.85' INV IN (A 18" DIA) CLAY=98.85' INV OUT (6" DIA) =98.85'
- 22. MANHOLE TOP=98.85' INV IN (A 18" DIA) CLAY=98.85' INV OUT (6" DIA) =98.85'
- 23. MANHOLE TOP=98.85' INV IN (A 18" DIA) CLAY=98.85' INV OUT (6" DIA) =98.85'
- 24. MANHOLE TOP=98.85' INV IN (A 18" DIA) CLAY=98.85' INV OUT (6" DIA) =98.85'
- 25. MANHOLE TOP=98.85' INV IN (A 18" DIA) CLAY=98.85' INV OUT (6" DIA) =98.85'
- 26. MANHOLE TOP=98.85' INV IN (A 18" DIA) CLAY=98.85' INV OUT (6" DIA) =98.85'
- 27. MANHOLE TOP=98.85' INV IN (A 18" DIA) CLAY=98.85' INV OUT (6" DIA) =98.85'
- 28. MANHOLE TOP=98.85' INV IN (A 18" DIA) CLAY=98.85' INV OUT (6" DIA) =98.85'
- 29. MANHOLE TOP=98.85' INV IN (A 18" DIA) CLAY=98.85' INV OUT (6" DIA) =98.85'
- 30. MANHOLE TOP=98.85' INV IN (A 18" DIA) CLAY=98.85' INV OUT (6" DIA) =98.85'
- 31. MANHOLE TOP=98.85' INV IN (A 18" DIA) CLAY=98.85' INV OUT (6" DIA) =98.85'
- 32. MANHOLE TOP=98.85' INV IN (A 18" DIA) CLAY=98.85' INV OUT (6" DIA) =98.85'
- 33. MANHOLE TOP=98.85' INV IN (A 18" DIA) CLAY=98.85' INV OUT (6" DIA) =98.85'
- 34. MANHOLE TOP=98.85' INV IN (A 18" DIA) CLAY=98.85' INV OUT (6" DIA) =98.85'
- 35. MANHOLE TOP=98.85' INV IN (A 18" DIA) CLAY=98.85' INV OUT (6" DIA) =98.85'
- 36. MANHOLE TOP=98.85' INV IN (A 18" DIA) CLAY=98.85' INV OUT (6" DIA) =98.85'
- 37. MANHOLE TOP=98.85' INV IN (A 18" DIA) CLAY=98.85' INV OUT (6" DIA) =98.85'
- 38. MANHOLE TOP=98.85' INV IN (A 18" DIA) CLAY=98.85' INV OUT (6" DIA) =98.85'
- 39. MANHOLE TOP=98.85' INV IN (A 18" DIA) CLAY=98.85' INV OUT (6" DIA) =98.85'
- 40. MANHOLE TOP=98.85' INV IN (A 18" DIA) CLAY=98.85' INV OUT (6" DIA) =98.85'
- 41. MANHOLE TOP=98.85' INV IN (A 18" DIA) CLAY=98.85' INV OUT (6" DIA) =98.85'
- 42. MANHOLE TOP=98.85' INV IN (A 18" DIA) CLAY=98.85' INV OUT (6" DIA) =98.85'
- 43. MANHOLE TOP=98.85' INV IN (A 18" DIA) CLAY=98.85' INV OUT (6" DIA) =98.85'
- 44. MANHOLE TOP=98.85' INV IN (A 18" DIA) CLAY=98.85' INV OUT (6" DIA) =98.85'
- 45. MANHOLE TOP=98.85' INV IN (A 18" DIA) CLAY=98.85' INV OUT (6" DIA) =98.85'
- 46. MANHOLE TOP=98.85' INV IN (A 18" DIA) CLAY=98.85' INV OUT (6" DIA) =98.85'
- 47. MANHOLE TOP=98.85' INV IN (A 18" DIA) CLAY=98.85' INV OUT (6" DIA) =98.85'
- 48. MANHOLE TOP=98.85' INV IN (A 18" DIA) CLAY=98.85' INV OUT (6" DIA) =98.85'
- 49. MANHOLE TOP=98.85' INV IN (A 18" DIA) CLAY=98.85' INV OUT (6" DIA) =98.85'
- 50. MANHOLE TOP=98.85' INV IN (A 18" DIA) CLAY=98.85' INV OUT (6" DIA) =98.85'

24-HR CONTACT INFORMATION
CHAD A. WORD
FULTON COUNTY SCHOOLS
OWNER'S REPRESENTATIVE
470-254-3355



CAUTION

THE UTILITIES SHOWN ARE SHOWN FOR THE CONTRACTOR'S CONVENIENCE ONLY. THERE MAY BE OTHER UTILITIES NOT SHOWN ON THESE PLANS. THE DESIGN PROFESSIONAL ASSUMES NO RESPONSIBILITY FOR THE LOCATIONS SHOWN AND IT SHALL BE THE CONTRACTOR'S RESPONSIBILITY TO VERIFY THE LOCATIONS OF UTILITIES WITHIN THE LIMITS OF THE WORK. DAMAGE TO EXISTING UTILITIES BY THE CONTRACTOR FROM HIS OPERATIONS, SHALL BE THE SOLE RESPONSIBILITY OF THE CONTRACTOR.

CONTRACTOR SHALL BE RESPONSIBLE TO SECURE THE SERVICES OF A PRIVATE UTILITY LOCATOR PRIOR TO THE START OF CONSTRUCTION. CONTRACTOR SHALL PAY FOR SAID SERVICES. CONTRACTOR SHALL IMMEDIATELY REPAIR ALL UTILITIES DAMAGED BY CONSTRUCTION ACTIVITIES AT NO ADDITIONAL COST TO THE OWNER.

CONTRACTOR SHALL BE RESPONSIBLE FOR CORRECTION OF BACKFILL OF ALL UTILITY TRENCHES WITHIN SITE WORK LIMITS. THIS INCLUDES REINFORCED DIA AND BACKFILLED BY LOCAL UTILITIES SUCH AS POWER, GAS, TELEPHONE, ETC. CONTRACTOR SHALL PROVIDE ADDITIONAL BACKFILL AND COMPACTION AS NECESSARY, IF SETTLEMENT OCCURS.

Architectural Firm
Facilitation Design

CGLS
ARCHITECTS

CHAPMAN GRIFFIN LANIER SUSSENBACH ARCHITECTS
2018

RELEASED FOR CONSTRUCTION

BREEDLOVE
LAND PLANNING

GEORGIA
REGISTERED
PROFESSIONAL
LANDSCAPE ARCHITECT
WATSON

DATE	NO.	DESCRIPTION
03/28/18	001	GOOD PRACTICE WORK SHEET DEVELOPMENT
06/18/18	002	SOIL CONSTRUCTION DOCUMENTS
09/17/18	003	CONTRACT DOCUMENTS
10/12/18	004	CONTRACT DOCUMENTS
11/01/18	005	CONTRACT DOCUMENTS

DOE FACILITY CODE 680-3086

400 Galleria Pkwy • Suite 100 • Atlanta, Ga 30339 • Phone: 404.733.5493

RIVERWOOD HIGH SCHOOL - PHASE 3-8
AUDITORIUM/GYMNASIUM ADDITION

5900 RAIDER DRIVE NW SANDY SPRINGS, GA 30228

FULTON COUNTY SCHOOLS REF NO. 411-19

PROJECT NO. 16015.02

DATE: 09.17.18

DRAWN BY: KWW

CHECKED BY: HOB

SITE PHASING PLAN (PHASE 7)

CHAPMAN GRIFFIN LANIER SUSSENBACH ARCHITECTS

C-160