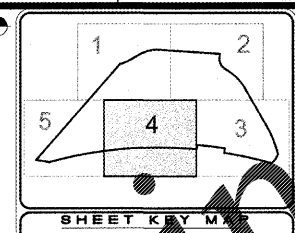
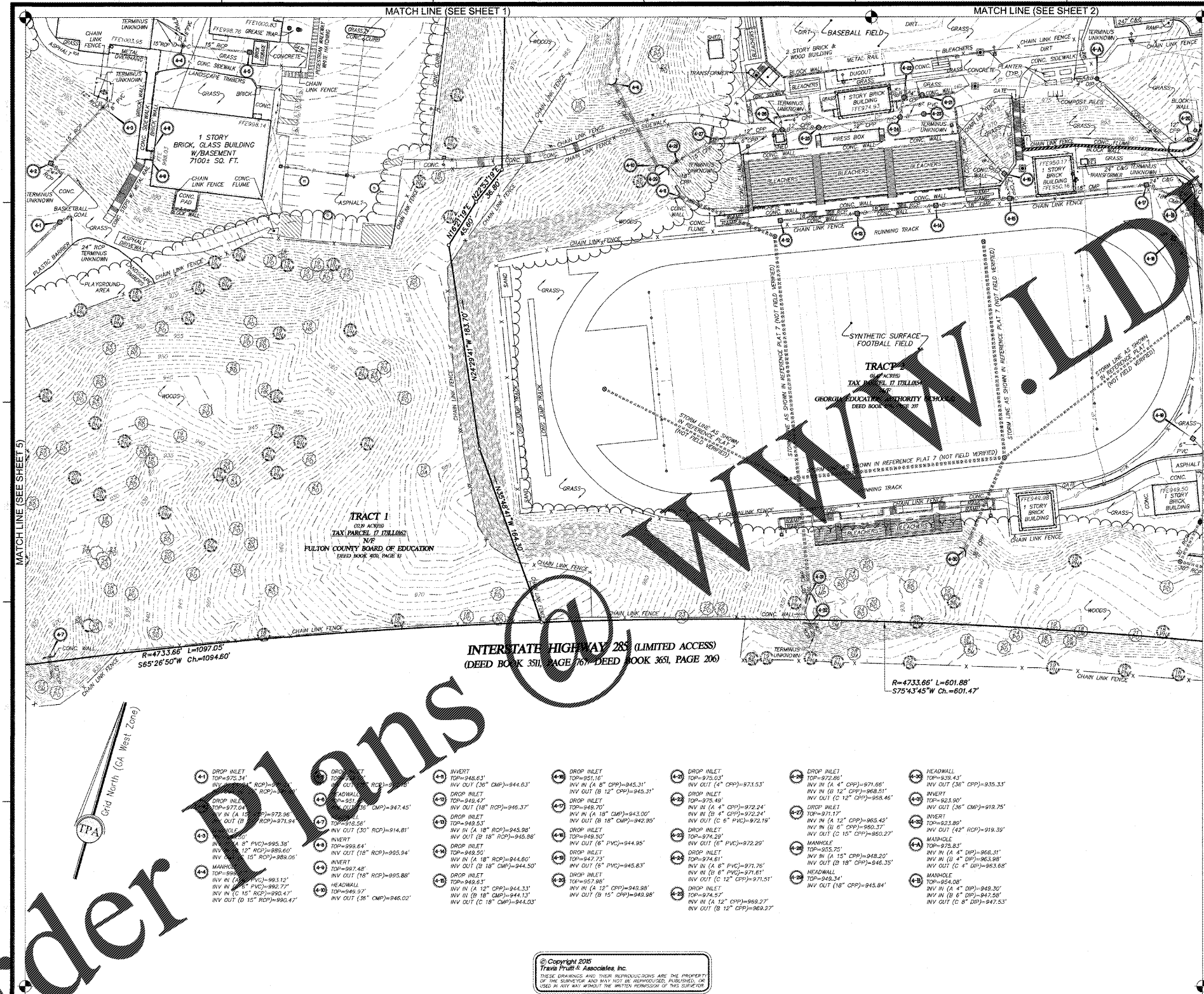


DATE	NO.	DESCRIPTION
03/28/18	1	ISSUE FOR PERMIT
06/18/18	2	REVISED PER CITY COMMENTS
09/17/18	3	REVISED PER CITY COMMENTS
10/12/18	4	REVISED PER CITY COMMENTS
11/02/18	5	REVISED PER CITY COMMENTS

DOE FACILITY CODE 680-3086  
**RIVERWOOD HIGH SCHOOL - PHASE 3-B**  
**AUDITORIUM/GYMNASIUM ADDITION**  
 5900 RAIDER DRIVE NW SANDY SPRINGS, GA 30328  
 FULTON COUNTY SCHOOLS RFP NO. 411-19

**BOUNDARY & TOPOGRAPHIC SURVEY (2015)**  
 SCALE: 1"=40'  
 SHEET NO. 16015.02  
 DATE: 09.17.18

**C-013**



**NOTE**  
 sheet 1 for general notes

- LEGEND**
- 1. LAND IDENTIFICATION
  - 2. STORM & SEWER STRUCTURE IDENTIFICATION
  - 3. IRON PIN FOUND (AS NOTED)
  - 4. RIGHT OF WAY MONUMENT
  - 5. PROPERTY CORNER
  - 6. BOLLARD
  - 7. DOWN SPOUT
  - 8. MANHOLE
  - 9. FLAG POLE
  - 10. PARKING SPACE NUMBER
  - 11. HANDICAP PARKING
  - 12. SATELLITE DISH
  - 13. SIGN
  - 14. TEMPORARY BENCHMARK
  - 15. GUY POLE
  - 16. LAMP POST
  - 17. POWER POLE W/ LIGHT
  - 18. LIGHT STAND
  - 19. 40' LIMIT
  - 20. ELECTRIC BOX
  - 21. ELECTRIC METER
  - 22. GUY WIRE
  - 23. POWER POLE
  - 24. OVERHEAD TRAFFIC LIGHT
  - 25. TRAFFIC SIGNAL BOX
  - 26. LANDSCAPE LIGHT
  - 27. SANITARY SEWER MANHOLE
  - 28. CLEAN OUT
  - 29. CATCH BASIN
  - 30. DROP INLET
  - 31. LANDING BOX
  - 32. HEADWALL
  - 33. SQUARE OUTLET CONTROL STRUCTURE
  - 34. YARD INLET SQUARE
  - 35. CABLE TV BOX
  - 36. TELEPHONE BOX
  - 37. TELEPHONE MANHOLE
  - 38. TELEPHONE MOUNTING
  - 39. GAS METER
  - 40. GAS MARKER
  - 41. GAS VALVE
  - 42. IRRIGATION CONTROL VALVE
  - 43. POST INDICATOR VALVE
  - 44. WATER METER
  - 45. FIRE DEPARTMENT CONNECTION
  - 46. FIRE HYDRANT
  - 47. WATER VALVE
  - 48. APPROXIMATE LOCATION OF UTILITY STRUCTURE (NOT FIELD VERIFIED)
  - 49. CONDUIT TREE
  - 50. SCISSOR TREE
  - 51. BEECH TREE
  - 52. BRADFORD PEAR TREE
  - 53. CHERRY TREE
  - 54. ELM TREE
  - 55. HICKORY TREE
  - 56. HOLLY TREE
  - 57. MAPLE TREE
  - 58. OAK TREE
  - 59. PINE TREE
  - 60. POPLAR TREE
  - 61. PERSIMMON TREE
  - 62. SWEET GUM TREE
  - 63. SYCAMORE TREE
  - 64. SOUTHWOOD TREE
  - 65. NOW OR FORMERLY
  - 66. RIGHT OF WAY
  - 67. T.B.M.
  - 68. TEMPORARY BENCHMARK
  - 69. FINISHED FLOOR ELEVATION
  - 70. CENTER LINE
  - 71. INVERT
  - 72. DUCTILE IRON PIPE
  - 73. POLYETHYLENE GLASS FIBER REINFORCED CONCRETE PIPE
  - 74. CORRUGATED PLASTIC PIPE
  - 75. CORRUGATED METAL PIPE
  - 76. SPOT ELEVATION
  - 77. CONCRETE ELEVATION
  - 78. FENCE LINE
  - 79. SANITARY SEWER LINE
  - 80. STORM DRAINAGE LINE
  - 81. STORM DRAINAGE LINE PER REFERENCE PLAT (NOT FIELD LOCATED)
  - 82. OVERHEAD POWER LINE
  - 83. OVERHEAD TELEPHONE LINE
  - 84. OVERHEAD CABLE TELEVISION LINE
  - 85. APPROXIMATE LOCATION OF UNDERGROUND GAS LINE
  - 86. APPROXIMATE LOCATION OF UNDERGROUND POWER LINE
  - 87. APPROXIMATE LOCATION OF UNDERGROUND TELEPHONE LINE
  - 88. APPROXIMATE LOCATION OF UNDERGROUND WATER LINE
  - 89. METAL RAIL
  - 90. TREE LINE

NO.	DATE	DESCRIPTION	BY
1	11/02/18	ISSUE FOR PERMIT	AB
2	06/18/18	REVISED PER CITY COMMENTS	AB
3	09/17/18	REVISED PER CITY COMMENTS	AB
4	10/12/18	REVISED PER CITY COMMENTS	AB
5	11/02/18	REVISED PER CITY COMMENTS	AB

**Order Plans**

© Copyright 2015  
 Travis Pruitt & Associates, Inc.  
 THESE DRAWINGS AND THEIR REPRODUCTIONS ARE THE PROPERTY OF THE SURVEYOR AND MAY NOT BE REPRODUCED, COPIED, OR USED IN ANY WAY WITHOUT THE WRITTEN PERMISSION OF THIS SURVEYOR

Client: 3D Projects, 1501 46th Street, SW, Atlanta, GA 30333, 404.733.5493  
 Date: 09.17.18  
 Sheet No. 4 of 5