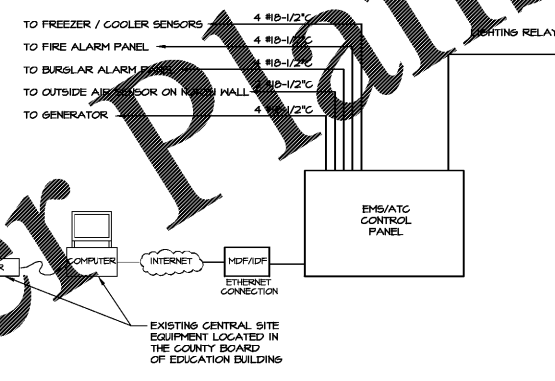
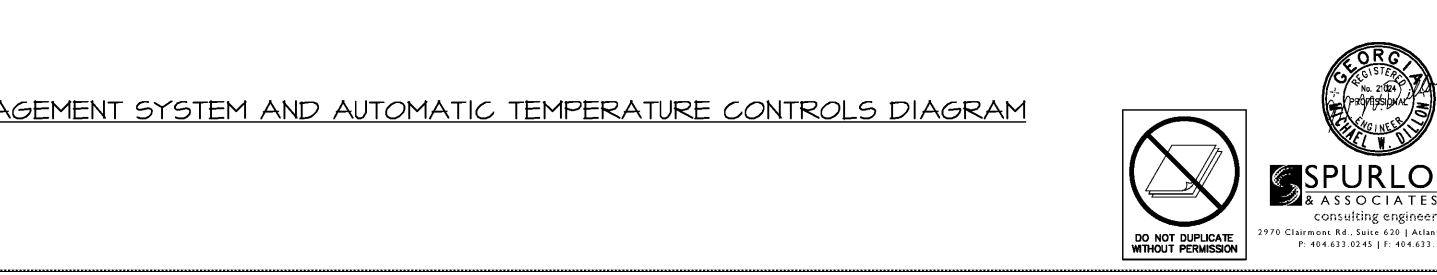
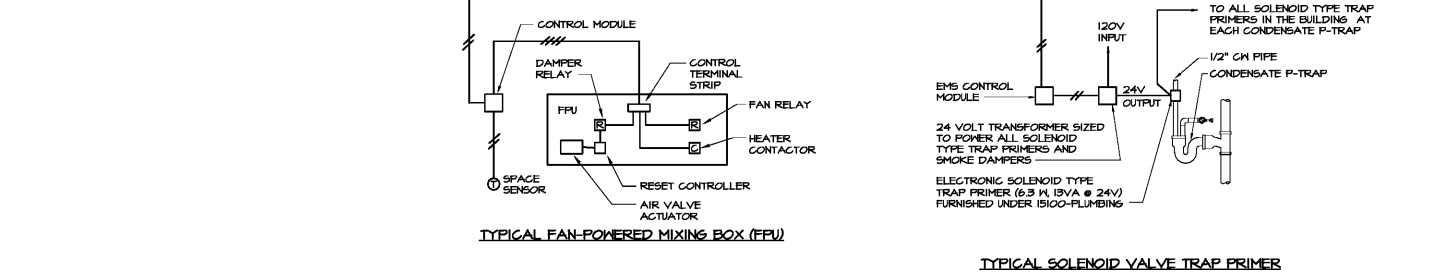
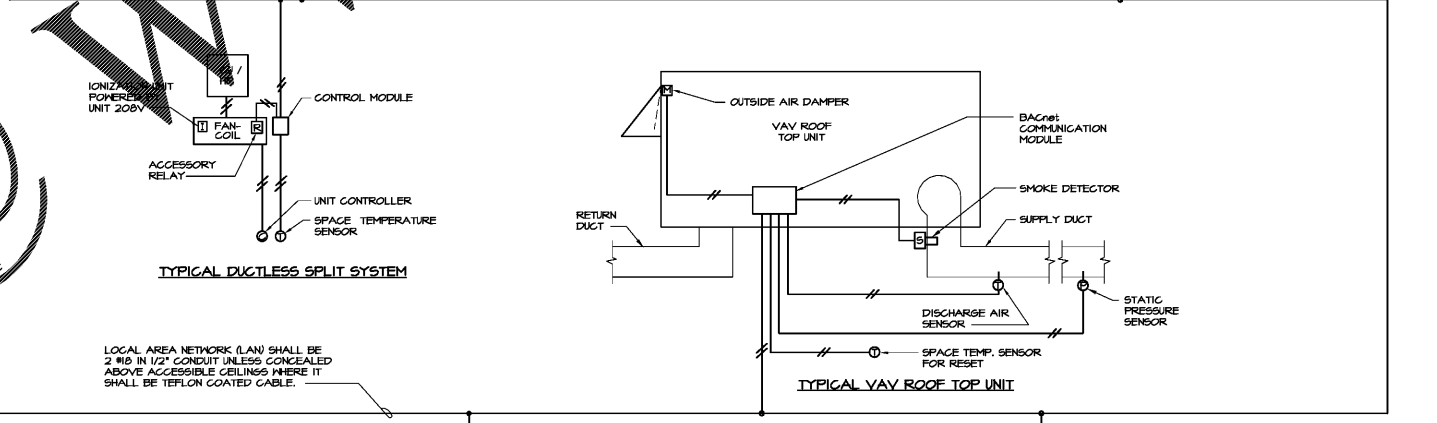
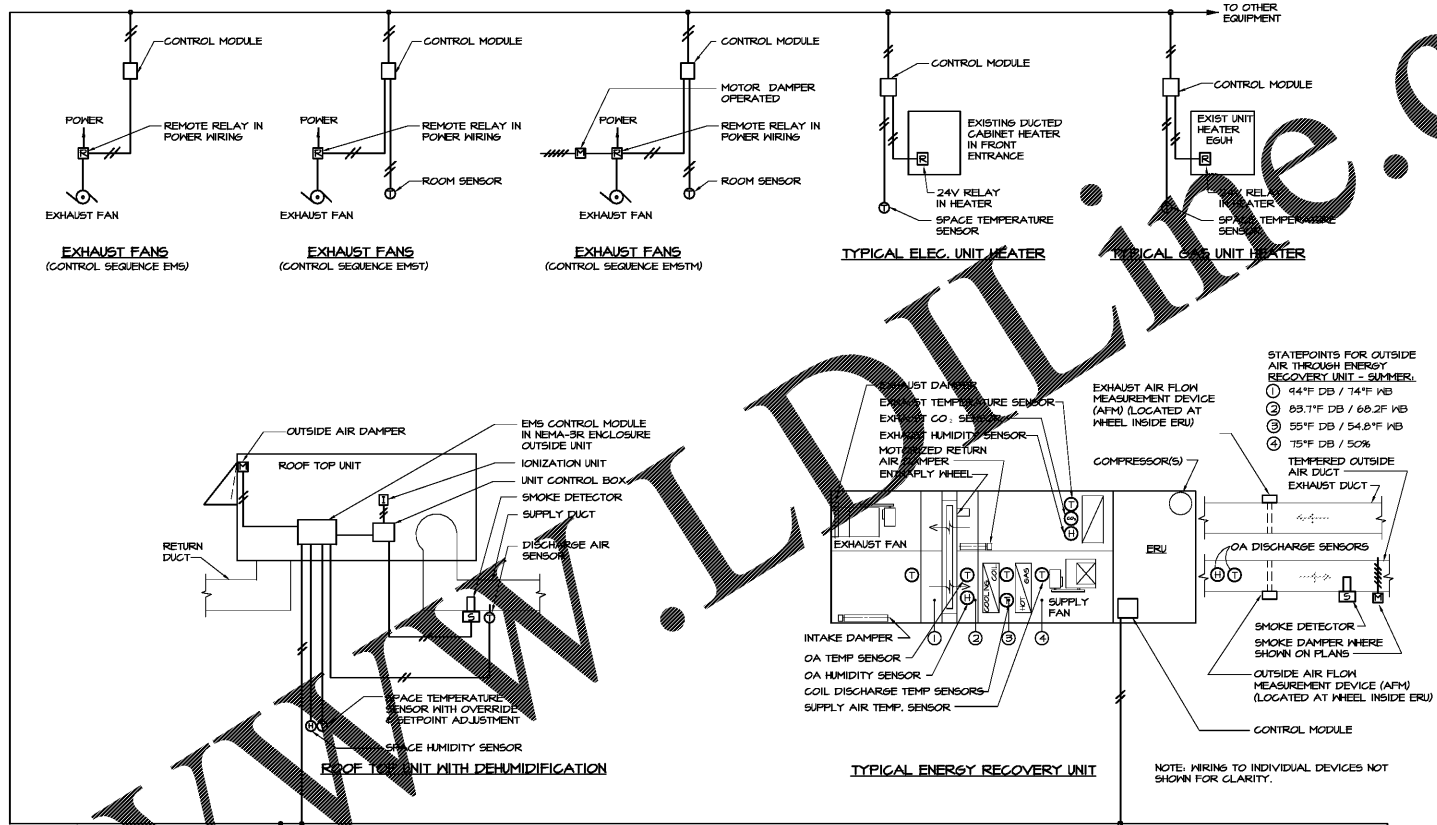


DRAWING ISSUE RECORD		
DATE	REVISIONS	NO.
10/30/18	BID SET	

MONITOR/CONTROL POINTS	HARDWARE POINTS					MONITOR/CONTROL POINTS	HARDWARE POINTS				
	AI - ANALOG INPUT	AO - ANALOG OUTPUT	DI - DIGITAL INPUT	DO - DIGITAL OUTPUT	MODBUS		AI - ANALOG INPUT	AO - ANALOG OUTPUT	DI - DIGITAL INPUT	DO - DIGITAL OUTPUT	BACNET
OUTSIDE AIR TEMPERATURE	X					TYPICAL ERU EXHAUST TEMPERATURE	X				
OUTSIDE AIR HUMIDITY	X					EXHAUST HUMIDITY	X				
ELECTRIC DEMAND METER			X			EXHAUST CO ₂ SENSOR	X				
GENERATOR STATUS			X			OUTSIDE AIR TEMP	X				
OVERCRANK MODEBUS			X		X	COIL DISCHARGE TEMP	X				
FIRE ALARM STATUS			X			SUPPLY AIR TEMP	X				
TROUBLE			X			SUPPLY AIR DUCT HUMIDITY	X				
BURGLAR ALARM STATUS			X			EXHAUST FAN START/STOP	X				
TROUBLE			X			EXHAUST FAN STATUS	X				
BURGLAR ALARM TROUBLE			X			SUPPLY FAN START/STOP	X				
TYP. FREEZER/COOLER ZONE TEMPERATURE	X					SUPPLY FAN STATUS	X				
TYPICAL WATER HEATER HW PUMP START/STOP	X					ENTHALPY WHEEL START/STOP	X				
WATER HEATER START/STOP	X					ENTHALPY WHEEL STATUS	X				
SUPPLY TEMPERATURE	X					COMPRESSOR START/STOP	X				
TYPICAL ELEC/GAS UNIT HEATER ZONE TEMPERATURE	X					HOT GAS REHEAT SOL. VALVE RA, OA, EA DAMPERS	X				
HEATER START/STOP	X					EXHAUST AIRFLOW (CFM)	X				
TYPICAL EF 'EM5' FAN START/STOP	X					OUTSIDE AIRFLOW (CFM)	X				
TYPICAL EF 'EM5T' OR 'EM5TM' ZONE TEMPERATURE	X					GAS HEAT START/STOP	X				
FAN START/STOP	X					TYP. ROOF-TOP UNIT ZONE TEMPERATURE	X				
TYP. P-TRAP OR FLOOR DRAIN SOLENOID VALVE OPEN/CLOSE	X					DISCHARGE AIR TEMPERATURE	X				
TYP. DUCTLESS SPLIT SYSTEM ZONE TEMPERATURE	X					SMOKE DETECTOR	X				
UNIT STATUS	X					SUPPLY FAN START/STOP	X				
UNIT ENABLE / DISABLE	X					FAN STATUS	X				
IONIZATION UNIT STATUS	X					COMPRESSOR START/STOP	X				
TYP. FAN PWRD MIX BOX COOLING AIR VALVE ACTUATOR	X					GAS HEAT START/STOP	X				
HEAT START/STOP	X					DEHUMIDIFICATION CYCLE	X				
FAN	X					OUTSIDE AIR DAMPER	X				
DISCHARGE AIR TEMPERATURE	X					IONIZATION UNIT STATUS	X				
SPACE TEMP SENSOR	X					TYP. ROOF-TOP UNIT (NAV) ZONE TEMPERATURE	X				
						DISCHARGE AIR TEMPERATURE	X				
						DUCT STATIC PRESSURE	X				
						BLDG STATIC PRESSURE	X				
						FAN VFD SIGNAL	X				
						COMPRESSOR START/STOP	X				
						COMPRESSOR CURRENT XPHR	X				
						CONDENSER FAN CURRENT XPHR	X				
						OUTSIDE AIR DAMPER	X				
						UNIT ALARM SIGNAL	X				
						IONIZATION UNIT STATUS	X				
						BACNET CONNECTION	X				

GENERAL NOTES:

- PROVIDE MULTIPLE STAGES OF CONTROL FOR UNITS WITH MULTIPLE STEPS OF CAPACITY.
- WIRE THRU SMOKE DETECTORS FOR UNITS WITH OVER 2000 CFM THAT SERVE CORRIDORS, AND/OR THAT HAVE ASSOCIATED SMOKE DAMPERS TO SHUT DOWN THE UNIT AND CLOSE THE SMOKE DAMPERS WHEN SMOKE IS PRESENT.
- CONTROL MFG SHALL PROVIDE ENOUGH BACNET CONNECTIONS FOR THE MASTER CONTROLLER OF THE VARIABLE REFRIGERANT SPLIT SYSTEM SUCH THAT THE OWNER CAN REMOTELY MONITOR AND ADJUST TEMPERATURE SETTINGS AND SCHEDULES FOR EACH FAN COIL.



1 ENERGY MANAGEMENT SYSTEM AND AUTOMATIC TEMPERATURE CONTROLS DIAGRAM
M4.1 NO SCALE

Order Plans @

cunningham forehand matthews moore

HVAC REPLACEMENT FOR NORTH OCONEE HIGH SCHOOL FC-108-0105 FOR THE OCONEE COUNTY BOARD OF EDUCATION WATKINSVILLE, GEORGIA

SPURLOCK & ASSOCIATES, INC.
consulting engineers
2970 Clairmont Rd., Suite 620 | Atlanta, GA 30339
P: 404.633.0245 | F: 404.633.1756
JOB NO. 1805

DO NOT DUPLICATE WITHOUT PERMISSION

cunningham, forehand, matthews & moore, architects, inc. - 2011 manchester street, n.e. - atlanta, georgia 30324 - phone (404) 873-2152