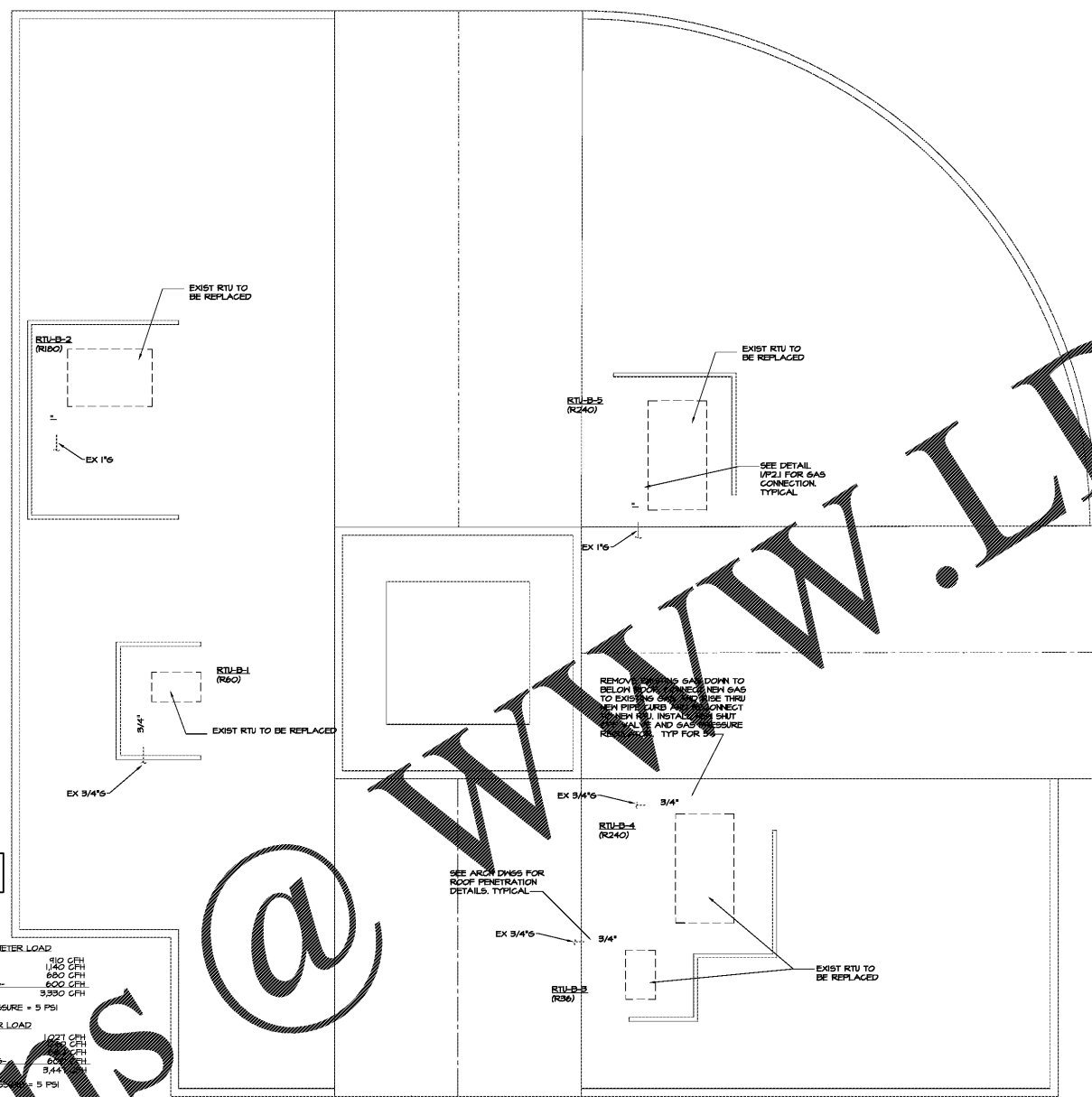


DRAWING ISSUE RECORD		
DATE	REVISIONS	NO.
10/30/18	BID SET	

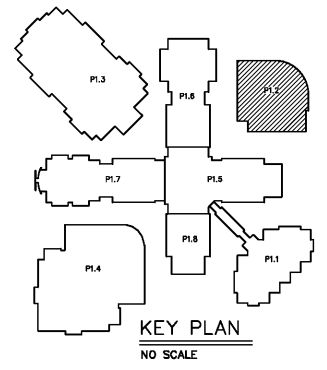
HVAC REPLACEMENT FOR
 NORTH OCOFEE HIGH SCHOOL
 EG: 108-010-010
 FOR THE
 OCOFEE COUNTY BOARD OF EDUCATION
 WATKINSVILLE, GEORGIA

DATE: SEPT 14, 2018
 JOB NO: 8-L-108-18
 DWG. BY: JCF
 DWG. NO: 11/11/18



CONTACT GAS COMPANY TO ADJUST OR REPLACE EXISTING GAS METER TO DELIVER 3441 CFH AT 5 PSI. THIS IS AN 111 CFH INCREASE OVER CURRENT DEMAND.

EXISTING GAS METER LOAD
 HEATING - 690 CFH
 GENERATOR - 1740 CFH
 COOKING - 660 CFH
 WATER HEATING - 600 CFH
 TOTAL - 3390 CFH
 DELIVERY PRESSURE = 5 PSI
NEW GAS METER LOAD
 HEATING - 1021 CFH
 GENERATOR - 2280 CFH
 COOKING - 660 CFH
 WATER HEATING - 250 CFH
 TOTAL - 3441 CFH
 DELIVERY PRESSURE = 5 PSI



1 PARTIAL FLOOR PLAN - PLUMBING
P1.2 1/8"=1'-0"



cunningham forehand matthews moore

cunningham, forehand, matthews & moore, architects, inc. - 2011 manchester street, n.e. - atlanta, georgia 30324 - phone (404) 873-2152