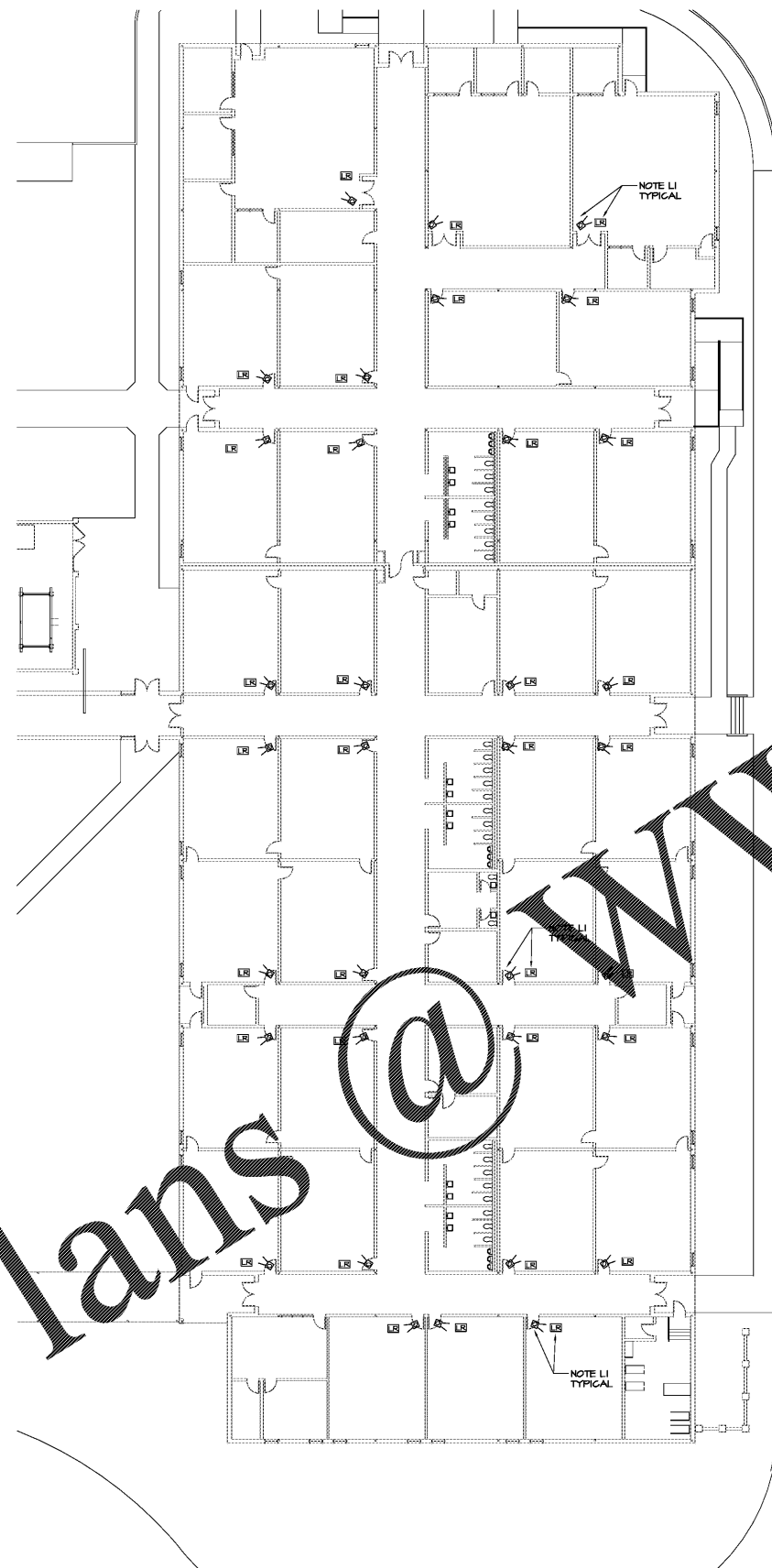
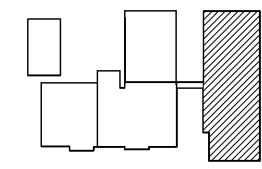


Order Plans



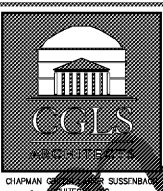
REFERENCED LIGHTING NOTES: (APPLIES TO THIS SHEET ONLY)  
 LI. INSTALL 1400 ELECTRICAL BOX ABOVE ACCESSIBLE CEILING IN AREA ABOVE LIGHT SWITCHES FOR LIGHTING RELAY. INSTALL OCCUPANCY SENSOR AND RELAY, FURNISHED UNDER MECHANICAL TO BREAK HOT CONDUCTOR TO LIGHT SWITCHES IN ROOMS INDICATED.

1 FLOOR PLAN - LIGHTING CONTROL  
 E2.11 1/8"=1'-0"



KEY PLAN  
 NO SCALE

WWW.LDILine.com



CHAPMAN GRIFFIN LANIER SUSSENBACH ARCHITECTS  
 207  
 RELEASED FOR CONSTRUCTION



2970 Clairmont Rd., Suite 620  
 Atlanta, GA 30329  
 P: 404.633.3245  
 F: 404.633.1736



DATE	NO.	DESCRIPTION
10/11/18	000	FINAL SUBMITTAL
10/29/18		ISSUE FOR BID

**FIVE FORKS MIDDLE SCHOOL**  
 HVAC & ROOFING RENOVATIONS  
 FACILITY NO. 667-0279  
 3250 River Drive, Lawrenceville, GA 30044  
 GWINNETT COUNTY SCHOOL DISTRICT

SHEET TITLE  
**FLOOR PLAN LIGHTING CONTROL**

PROJECT NO.  
 18007.02  
 DATE  
 OCTOBER 11, 2018  
 DRAWN BY  
 G.L.C.  
 CHECKED BY  
 G.L.C.

SHEET NO.  
**E2.11**