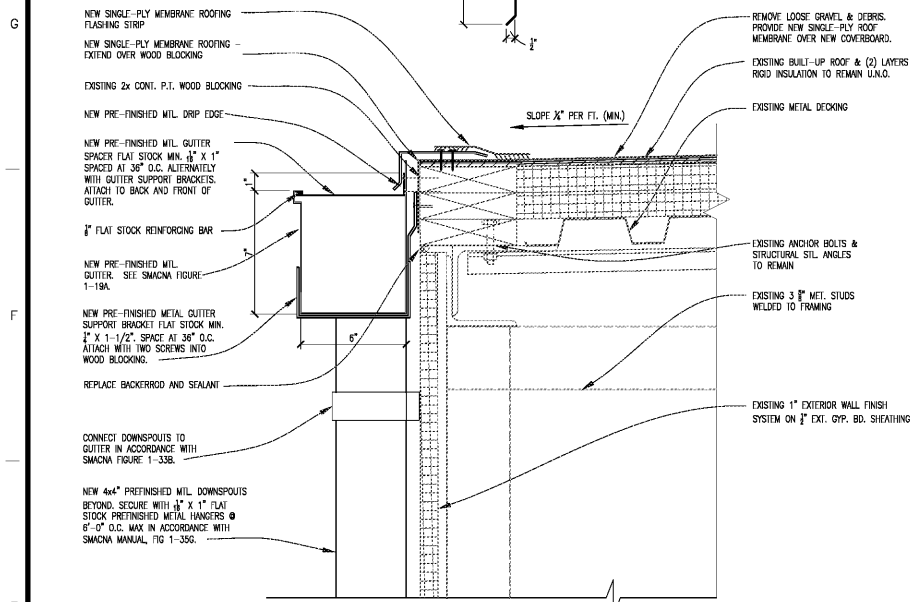
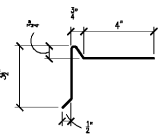
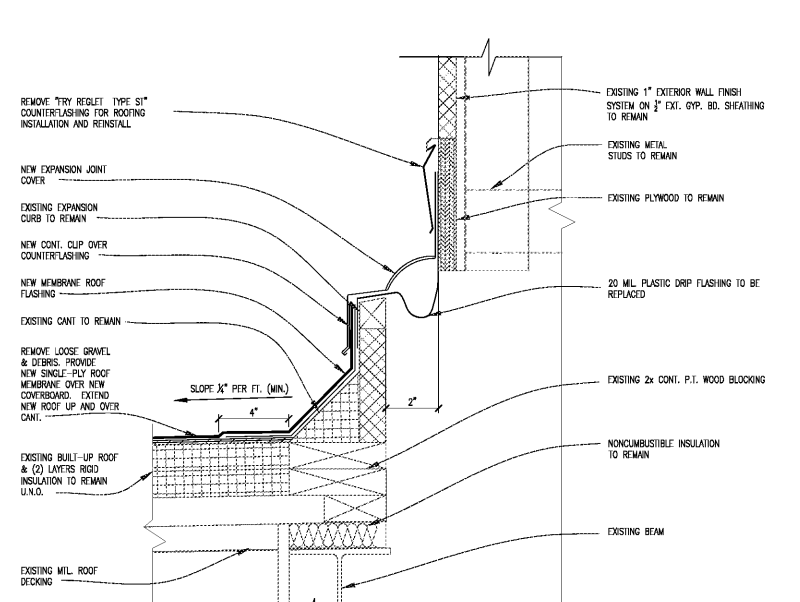


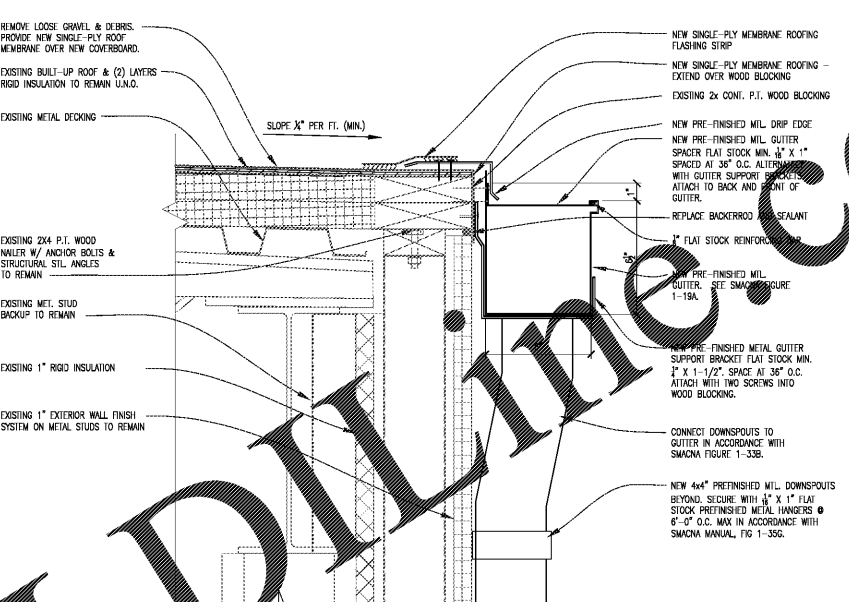
DRIP EDGE DIMENSIONS



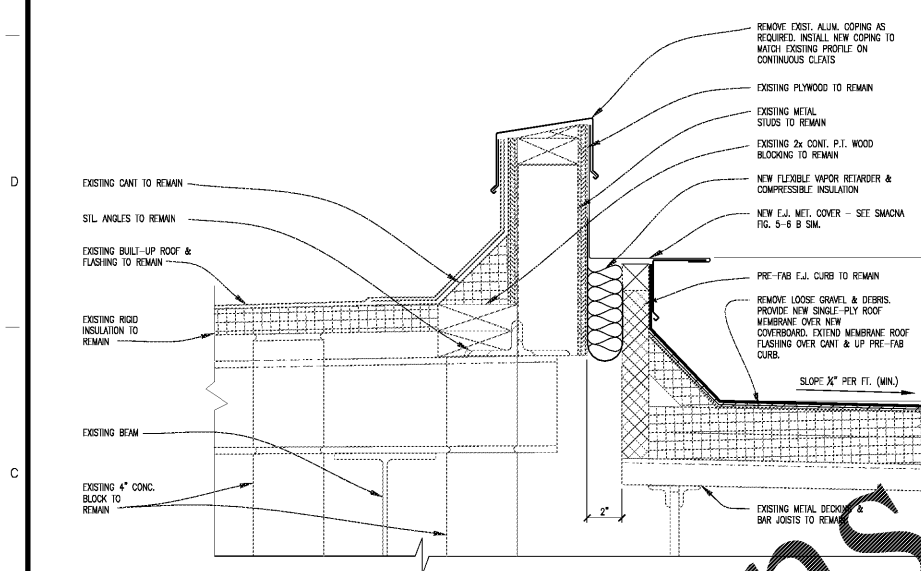
E1 ROOF EDGE DETAIL
A-4.11 1'-0" - 1'-0"



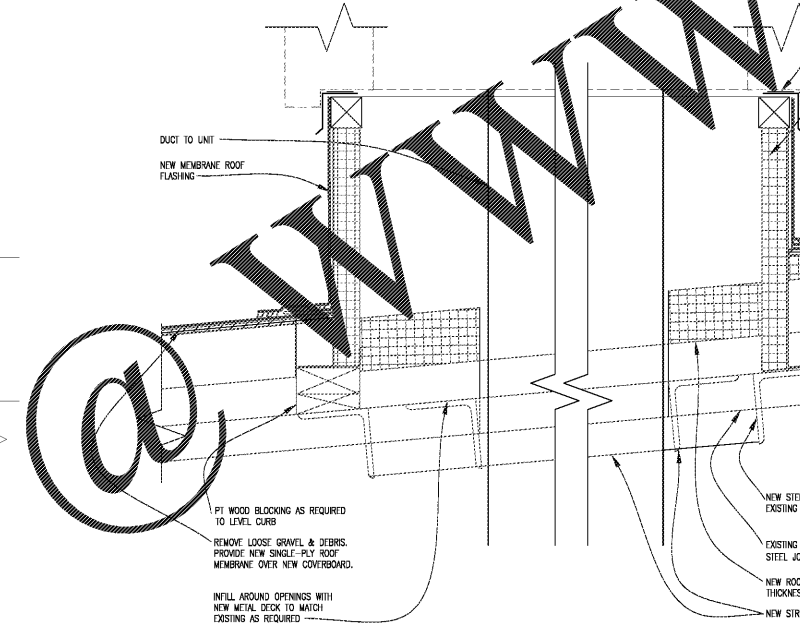
E4 ROOF EXPANSION JOINT DETAIL
A-4.11 1'-0" - 1'-0"



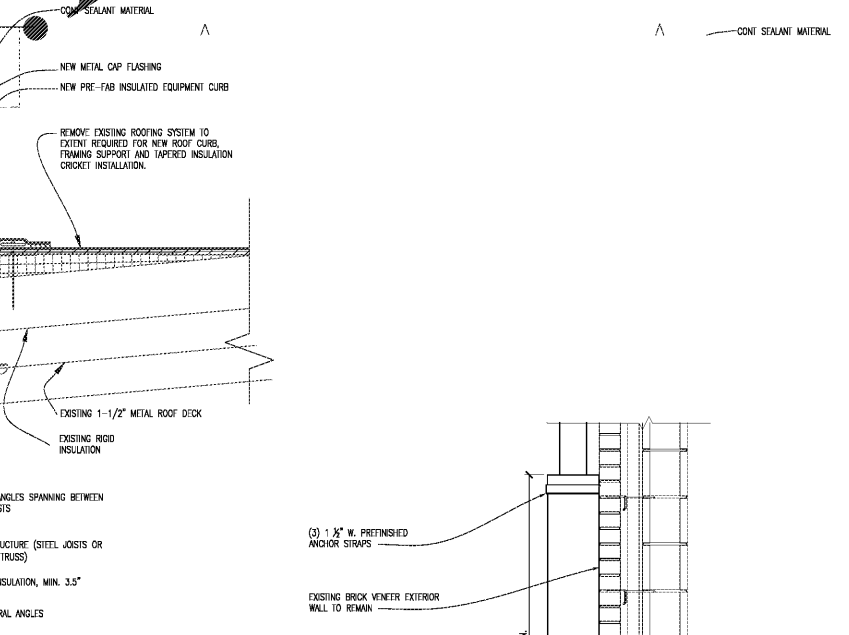
E7 ROOF EDGE DETAIL
A-4.11 1'-0" - 1'-0"



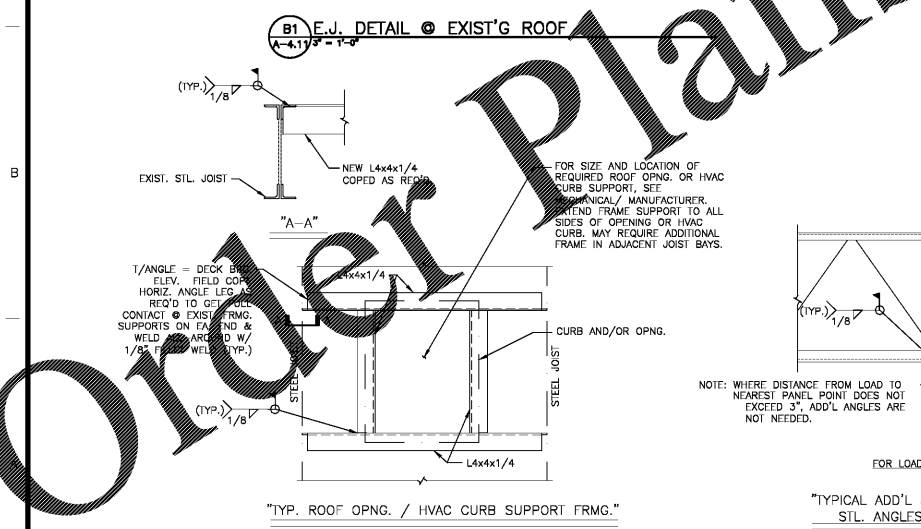
B1 E.J. DETAIL - EXIST'G ROOF
A-4.11 1'-0" - 1'-0"



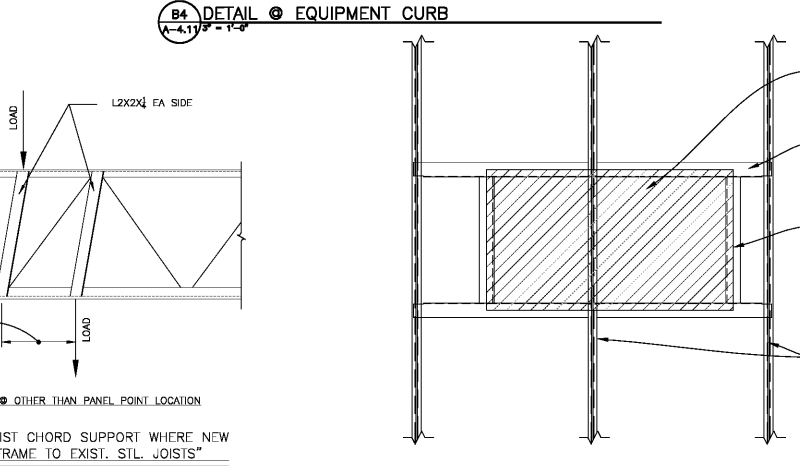
B4 DETAIL - EQUIPMENT CURB
A-4.11 1'-0" - 1'-0"



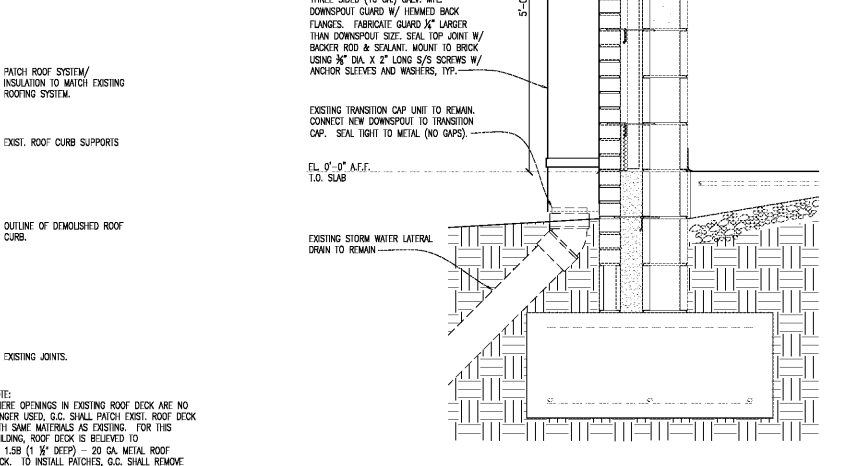
B8 TYP. ROOF PATCH DETAIL
A-4.11 1/2" - 1'-0"



A1 STRUCTURAL DET 1
A-4.11 1'-0" - 1'-0"



A4 STRUCTURAL DET 2
A-4.11 1'-0" - 1'-0"



A8 DOWNSPOUT GUARD DETAIL
A-4.11 1'-0" - 1'-0"

Order Plans

WWW.LDILLINE.COM

CHAPMAN GRIFIN LANIER SUSSENBACH ARCHITECTS

REGISTERED ARCHITECT

DATE	NO.	DESCRIPTION
10/11/18		000: FINAL SUBMITAL
10/28/18		ISSUE FOR BID

FIVE FORKS MIDDLE SCHOOL
HVAC & ROOFING RENOVATIONS
 FACILITY NO. 667-0279
 3550 River Drive, Lawrenceville, GA 30044
 GWINNETT COUNTY SCHOOL DISTRICT

PROJECT NO. 19007.02
 DATE: OCTOBER 11, 2018
 SHEET NO. **A-4.11**