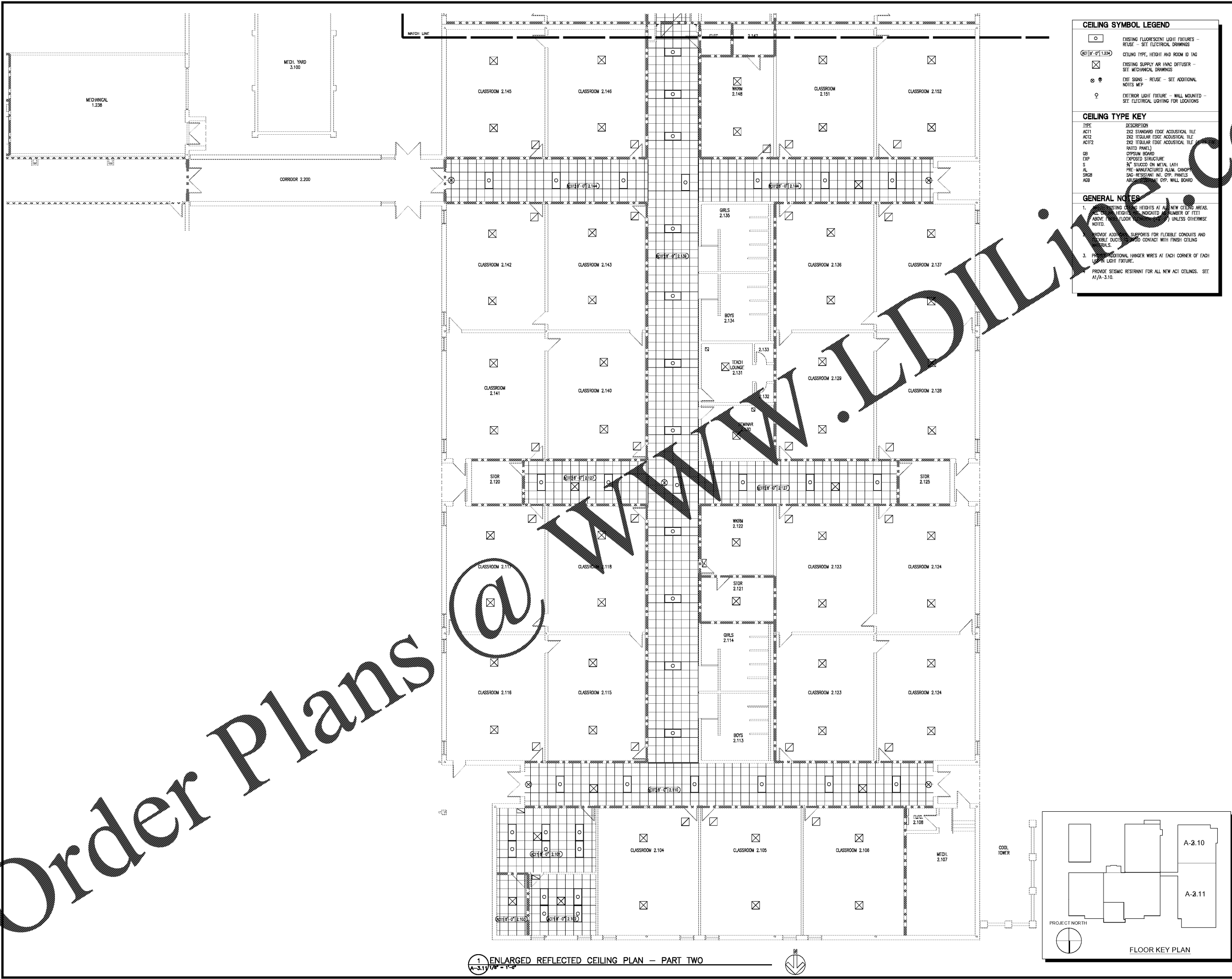


Order Plans



CEILING SYMBOL LEGEND

- EXISTING FLUORESCENT LIGHT FIXTURES - REUSE - SEE ELECTRICAL DRAWINGS
- ⊗ CEILING TYPE, HEIGHT AND ROOM ID TAG
- ⊠ EXISTING SUPPLY AIR HVAC DIFFUSER - SEE MECHANICAL DRAWINGS
- ⊕ EXIT SIGNS - REUSE - SEE ADDITIONAL NOTES MEP
- ⊚ EXTERIOR LIGHT FIXTURE - WALL MOUNTED - SEE ELECTRICAL LIGHTING FOR LOCATIONS

CEILING TYPE KEY

TYPE	DESCRIPTION
ACT1	2X2 STANDARD EDGE ACOUSTICAL TILE
ACT2	2X2 REGULAR EDGE ACOUSTICAL TILE
ACT3	2X2 REGULAR EDGE ACOUSTICAL TILE (RAISED PANEL)
CB	GYPSUM BOARD
EXP	EXPOSED STRUCTURE
S	¾" STUCCO ON METAL LATH
AL	PRE-MANUFACTURED ALUM. GYPSUM
SRCB	SAC-RESISTANT INT. GYP. PANELS
AGB	ARLITE GYP. WALL BOARD

GENERAL NOTES

- EXISTING CEILING HEIGHTS AT ALL NEW CEILING AREAS. ALL CEILING HEIGHTS INDICATED NUMBER OF FEET ABOVE FINISH FLOOR UNLESS OTHERWISE NOTED.
- PROVIDE ADDITIONAL SUPPORTS FOR FLOOR CONDUITS AND EXPOSED DUCTS TO CONTACT WITH FINISH CEILING PANELS.
- PROVIDE ADDITIONAL HANGER WIRES AT EACH CORNER OF EACH LIGHT FIXTURE.

PROVIDE SEISMIC RESTRAINT FOR ALL NEW ACT CEILINGS. SEE A1/A-3.10.

Architectural Facilitation Design

CGLS ARCHITECTS

CHAPMAN GRIFFIN LANIER SUSENBACH ARCHITECTS

RELEASED FOR CONSTRUCTION

CONSULTANT

STATE OF GEORGIA
REBECCA M. SUSENBACH
REGISTERED ARCHITECT

DATE	NO.	DESCRIPTION
10/11/18		ISSUE FINAL SUBMITTAL
10/29/18		ISSUE FOR BID

**FIVE FORKS MIDDLE SCHOOL
HVAC & ROOFING RENOVATIONS**

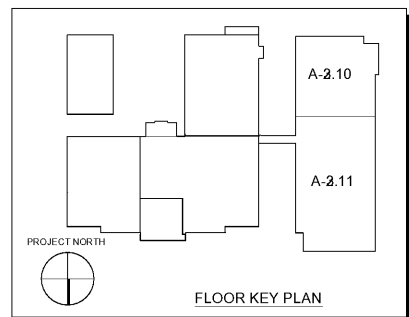
FACILITY NO. 667-0279
3250 River Drive, Lawrenceville, GA 30044
GWINNETT COUNTY SCHOOL DISTRICT

CHAPMAN GRIFFIN LANIER SUSENBACH ARCHITECTS
400 Griffin Parkway • Suite 100 • Atlanta, Georgia 30309 • Phone 404.732.4100

PART 2 - RCP

PROJECT NO. 18007.02
DATE OCTOBER 11, 2018

A-3.11



1 ENLARGED REFLECTED CEILING PLAN - PART TWO
A-3.11 1/8" = 1'-0"