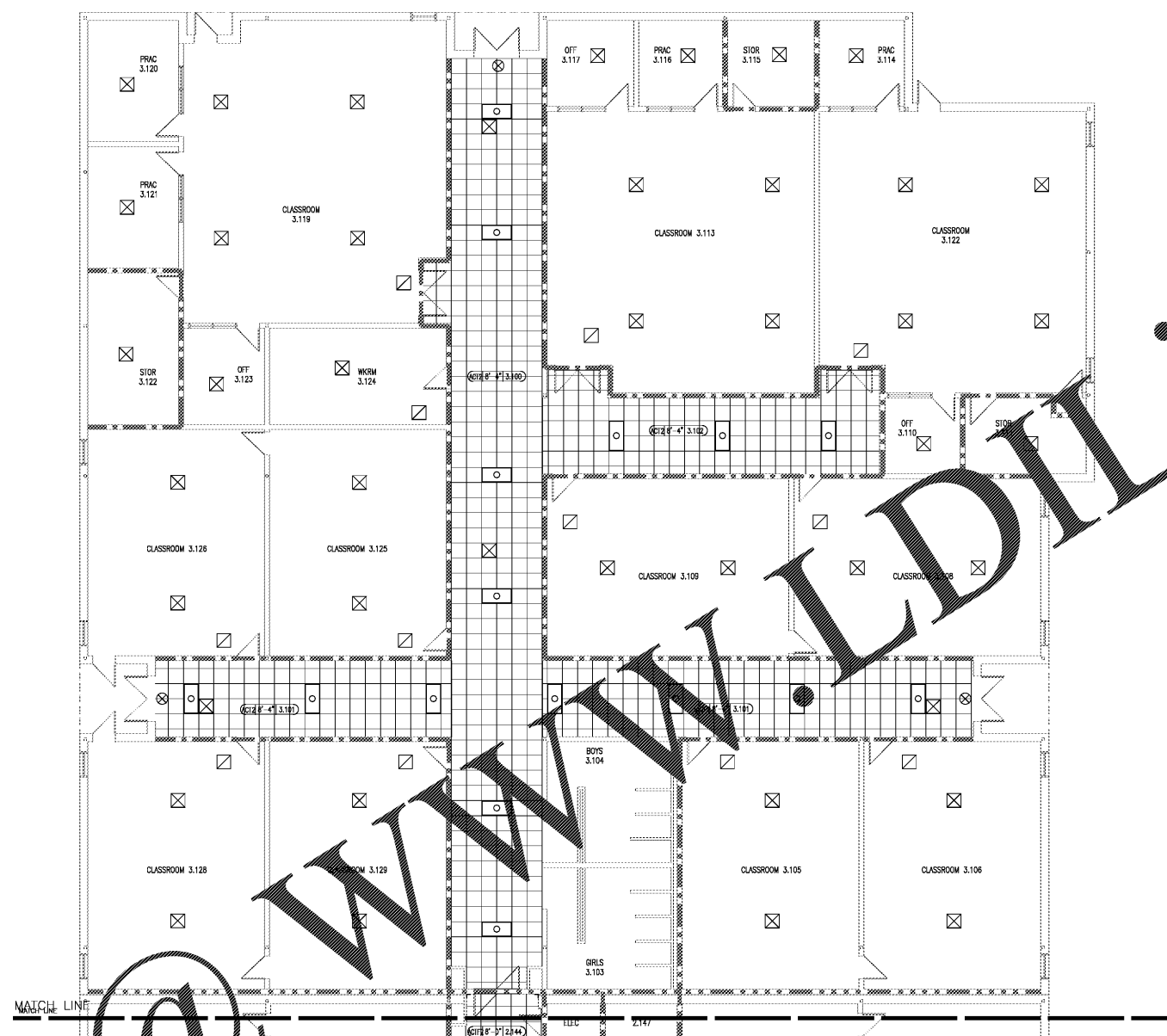


Order Plans

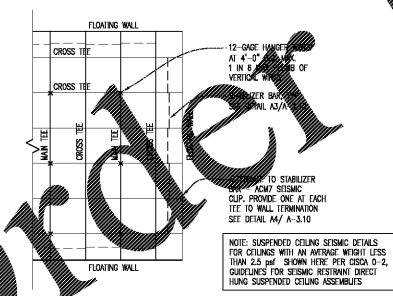


ENLARGED REFLECTED CEILING PLAN - PART ONE

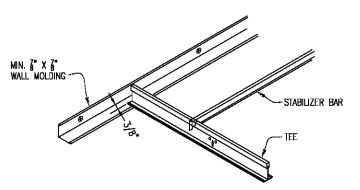
CEILING SYMBOL LEGEND	
	EXISTING FLUORESCENT LIGHT FIXTURES - REUSE - SEE ELECTRICAL DRAWINGS
	EXISTING SUPPLY AIR HVAC DIFFUSER - SEE MECHANICAL DRAWINGS
	EXIT SIGNS - REUSE - SET ADDITIONAL NOTES MEP
	EXTERIOR LIGHT FIXTURE - WALL MOUNTED - SEE ELECTRICAL LIGHTING FOR LOCATIONS

CEILING TYPE KEY	
ACT1	2X2 STANDARD EDGE ACOUSTICAL TILE
ACT2	2X2 TEGULAR EDGE ACOUSTICAL TILE
ACT3	2X2 TEGULAR EDGE ACOUSTICAL TILE (1/4" RATED PANEL)
OSB	GYPSON BOARD
EXP	EXPOSED STRUCTURE
S	3/4" STUCCO ON METAL LATH
AL	PRE-MANUFACTURED ALUM. CANOPY
SRGB	5/8" RESISTANT INT. GYP. PANELS
ASB	ABUSE RESISTANT GYP. WALL BOARD

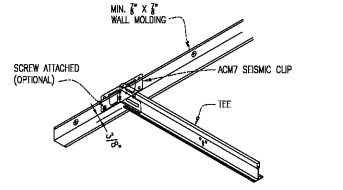
GENERAL NOTES	
1.	INDICATE CEILING HEIGHTS AT ALL NEW CEILING AREAS. CEILING HEIGHTS INDICATED AS NUMBER OF FEET ABOVE FINISHED FLOOR LEVEL UNLESS OTHERWISE NOTED.
2.	PROVIDE ADDITIONAL SUPPORTS FOR FLEXIBLE CONDUITS AND FLEXIBLE DUCTS IN CONTACT WITH FINISH CEILING PANELS.
3.	PROVIDE ADDITIONAL HANGER WIRES AT EACH CORNER OF EACH LAYER LIGHT FIXTURE.
	PROVIDE SEISMIC RESTRAINT FOR ALL NEW ACT CEILINGS. SET: A1/A-3.10.



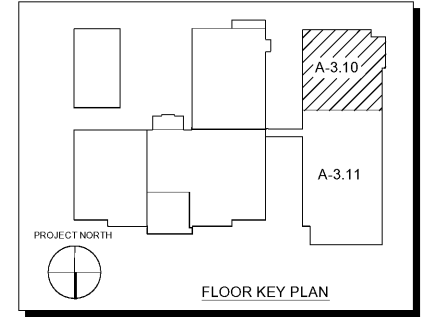
A1 SEISMIC CEILING PLAN DETAIL



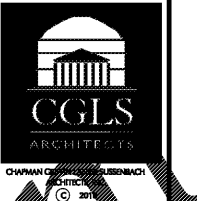
A3 DETAIL OF STABILIZER BAR



A4 ALT. DETAIL - STABILIZER CLIP



FLOOR KEY PLAN



CHAPMAN GRIFFIN LANIER SUSSENBACK ARCHITECTS
 RELEASED FOR CONSTRUCTION



DATE	NO.	DESCRIPTION
10/11/18		CODE FINAL SUBMITTAL
10/28/18		ISSUE FOR BID

FIVE FORKS MIDDLE SCHOOL
 HVAC & ROOFING RENOVATIONS
 FACILITY NO. 667-0279
 3250 River Drive, Lawrenceville, GA 30044
 GWINNETT COUNTY SCHOOL DISTRICT

PART 1 - RCP

PROJECT NO. 19007.02
 DATE OCTOBER 11, 2018

A-3.10

CHAPMAN GRIFFIN LANIER SUSSENBACK ARCHITECTS