

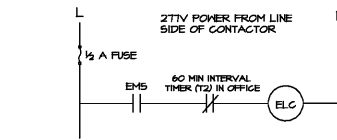
LIGHTING CONTACTORS SHALL BE SQUARE D 9403 SERIES AS SCHEDULED. 277V, NORMALLY CLOSED CONTACTS. ELECTRICALLY HELD LIGHTING CONTACTOR. PROVIDE NEMA 1 ENCLOSURE MOUNT CONTACTOR ON WALL AT APPROX. 48" AFF ADJACENT TO LIGHTING PANEL SERVED. BREAK LIGHTING CIRCUITS (SEE SCHEDULE) THRU CONTACTS. INSTALL LAMINATED PLASTIC NAMEPLATE ON COVER WITH CONTACTOR NAME (i.e. "LC-1", "LC-2", etc.)

MOUNT EMS RELAY ON WALL AT APPROX. 48" AFF OUTSIDE OF CONTACTOR, WHERE LED STATUS INDICATOR IS READILY VISIBLE.

SWITCH ON RELAY MUST BE LABELED HAND/OFF/AUTO CORRESPONDING TO THE CORRECT POSITIONS OF THE SWITCH.

\*\*\*INSTALL AS SHOWN SO THAT EMS CAN SWITCH OFF ALL LIGHTING CIRCUITS.

1 LIGHTING PANEL CONTACTOR WIRING DIAGRAM  
E6.1 SCHEMATIC ONLY

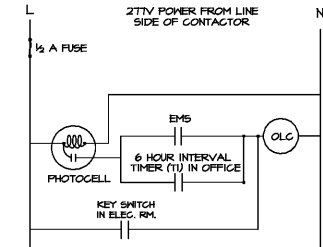


LIGHTING CONTACTOR ELC SHALL BE SQUARE D 9403 L660-V04 277V, 3 POLE, NORMALLY CLOSED CONTACTS. ELECTRICALLY HELD LIGHTING CONTACTOR. PROVIDE NEMA 1 ENCLOSURE. BREAK CIRCUITS THROUGH CONTACTS. INSTALL LAMINATED PLASTIC NAMEPLATE ON COVER READING "EMERGENCY LIGHTING CONTACTOR".

INTERVAL TIMER (T2) SHALL BE MARKTIME 49505 0-60 MIN. NO HOLD, ON TYPE. INSTALLED IN RECEPTION OFFICE. INSTALL PLASTIC LAMINATE NAMEPLATE ON WALL ABOVE TIMER READING "EMERGENCY LIGHTING".

\*\*\*INSTALL AS SHOWN SO THAT EITHER EMS OR INTERVAL TIMER CAN TURN ON LIGHTS INDEPENDENT OF THE OTHER.

2 EMERGENCY LIGHTING CONTACTOR ELC CONTROL WIRING DIAGRAM  
E6.1 SCHEMATIC ONLY



LIGHTING CONTACTOR OLC SHALL BE SQUARE D 9403 L660-V04 277V, 3 POLE, NORMALLY OPEN CONTACTS. ELECTRICALLY HELD LIGHTING CONTACTOR WITH NEMA 1 ENCLOSURE. BREAK CIRCUITS THROUGH CONTACTS. INSTALL LAMINATED PLASTIC NAMEPLATE ON COVER READING "OUTSIDE LIGHTING CONTACTOR".

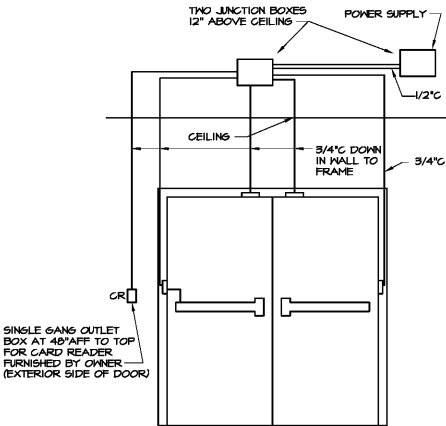
PHOTOCELL SHALL BE PARAGON CA-201-TO, 277V, MOUNTED ON CONDUIT STUBBED OUT THRU WALL WHERE INDICATED ON PLANS.

KEY SWITCH SHALL BE LEVITON 1221-2KL.

INTERVAL TIMER (T1) SHALL BE MARKTIME 49505 0-6 HOUR, NO HOLD, OFF TYPE, INSTALLED IN BUSINESS OFFICE. INSTALL PLASTIC LAMINATE NAMEPLATE ON WALL ABOVE TIMER READING "OUTSIDE LIGHTING".

\*\*\*INSTALL AS SHOWN SO THAT EMS OR INTERVAL TIMER CAN TURN ON LIGHTS IF PHOTOCELL IS ACTIVATED. KEY SWITCH CAN TURN ON LIGHTS BY ITSELF.

3 OUTSIDE LIGHTING CONTACTOR OLC CONTROL WIRING DIAGRAM  
E6.1 SCHEMATIC ONLY



PROVIDE CONDUIT AS SHOWN FOR FUTURE USE BY OWNER. AT LOCATIONS WITH NO OR HIGH CEILINGS, INSTALL JUNCTION BOXES ABOVE CEILING OF ADJACENT ROOM.

SINGLE DOORS TYPICAL WITH CONDUIT OMITTED FOR SECOND LEAF. SEE ARCHITECTURAL DRAWINGS FOR DOORS REQUIRING FUTURE ACCESS CONTROL.

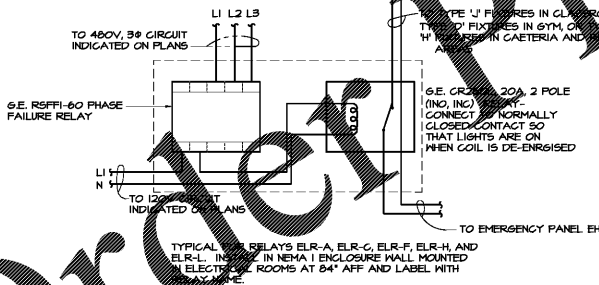
PROVIDE WEATHER PROOF OUTLET BOX AND COVER FOR FUTURE CARD READER.

HOLLOW METAL MANUFACTURER TO PROVIDE GROUT BOXES W/ CONDUIT FITTINGS FOR ALL ELECTRICAL COMPONENTS MOUNTED IN THE FRAME.

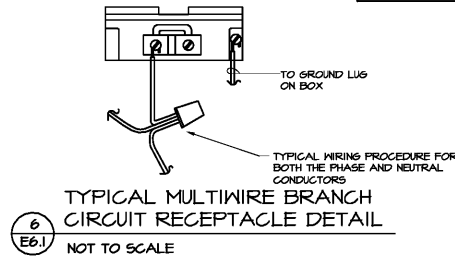
4 ACCESS CONTROL DIAGRAM  
E6.1 SCHEMATIC ONLY

LEGEND		
SYMBOL	DESCRIPTION	MNT'S HGT TO TOP
○	CEILING MOUNTED FLOURESCENT FIXTURE	
●	SOLID DOT INDICATES FIXTURE ON EMERGENCY CIRCUIT	
○	CEILING MOUNTED INCANDESCENT OR H.I.D. FIXTURE	
○	WALL MOUNTED INCANDESCENT OR H.I.D. FIXTURE	
○	CEILING MOUNTED EXIT LIGHT - ARROWS AS INDICATED	
○	WALL MOUNTED EXIT LIGHT - ARROWS AS INDICATED	102" ***
○	JUNCTION BOX IN WALL	20" **
○	SINGLE POLE SWITCH 15A-120/277V HUBBELL 1201-1	48"
○	3-WAY SWITCH 15A-120/277V HUBBELL 1203-1	48"
○	4-WAY SWITCH 15A-120/277V HUBBELL 1204-1	48"
○	KEY OPERATED SWITCH 15A-120/277V HUBBELL 1201-L	48"
○	DIMMER SWITCH 1000W-125V LUTRON NOVA NT-1003P W/ PRESET	48"
○	INTERVAL TIMER MARKTIME 49505 0-6 HR. 20A-125V	48"
○	INTERVAL TIMER MARKTIME 49505 0-60 MIN. 20A-125V	48"
○	CEILING MTD. OCCUPANCY SENSOR. SEE DETAIL 3/EI.12	
○	CEILING MTD. 360° OCCUPANCY SENSOR. SEE DETAIL 3/EI.12	
○	OCCUPANCY SENSOR RELAY. SEE DETAIL 3/EI.12	
○	MOTOR RATED SWITCH 20A-120/277V HUBBELL 1221 W/194 ENCLOSURE FOR LOCKOUT	48"
○	SINGLE POLE SWITCH 30A-120/277V HUBBELL 3031	48"
○	RAISE-LOWER SWITCH FURNISHED WITH EQUIPMENT CONTROLLED	48"
○	GROUND DUPLEX TAMPER-RESISTANT RECEPT. 15A-125V HUBBELL CR51TR	48"
○	RECEPTACLE MOUNTED ABOVE COUNTER TOP	48" ***
○	'R' INDICATES DUPLEX RECEPTACLE W/ RED FACE 15A-125V HUBBELL HBL5252-RED	20"
○	GROUND FAULT, TAMPER RES. INTERRUPTING RECEPT. 20A-125V HUBBELL 6FTR5210-I	20"
○	GROUND DUPLEX RECEPTACLE 20A-125V HUBBELL GR201TR	20"
○	SPILT MIREX DUPLEX RECEPTACLE 20A-125V HUBBELL HBL5952-1	20"
○	RECEPTACLE 20A-125V HUBBELL HBL5951-1	20"
○	RECEPTACLE 30A-125V HUBBELL HBL4930	20"
○	HANGER OUTLET 15A-125V HUBBELL HBL5235	64"
○	RECEPTACLE WITH HUBBELL HBL5221 WEATHER-PROOF COVER	20"
○	GFI RECEPTACLE WITH HUBBELL WF26M WEATHER-PROOF COVER FOR ROOF ONLY	24" **
○	GFI RECEPTACLE WITH HUBBELL WF26 WEATHER-PROOF COVER	20" **
○	TWO DUPLEX RECEPTACLES WITH TWO GANS COVER	20"
○	TWO DUPLEX RECEPTACLES WITH TWO GANS COVER ABOVE COUNTER	48" ***
○	RECEPTACLE 20A-125/250V HUBBELL HBL410	20"
○	20A 20A 250V HUBBELL HBL5461-I	20"
○	DRYER OUTLET 30A-125/250V HUBBELL HBL4130	20"
○	RECEPTACLE 30A-125V HUBBELL HBL4930	20"
○	RECEPTACLE 30A-125/250V, 39 THIST-LOG HUBBELL HBL2810	20"
○	RANGE OUTLET 30A-125/250V HUBBELL HBL1962	20"
○	30A-250V HUBBELL HBL450A	20"
○	POWER/DATA POLE- SEE POWER NOTES	
○	TELEVISION WALL OUTLET W/ 3/8" UP IN WALL AND TURNED OUT ABOVE CEILING	48" ***
○	TELEPHONE WALL OUTLET W/ 3/8" UP IN WALL AND TURNED OUT ABOVE CEILING	48" ***
○	TELEPHONE WALL OUTLET FOR WALL PHONE	48"
○	DATA WALL OUTLET W/ 1 1/2" UP IN WALL AND TURNED OUT ABOVE CEILING	20"
○	TEACHER DATA/TELEPHONE WALL OUTLET - SEE DETAIL 2/EI.12	
○	FLUSH FIRE ALARM PULL STATION	
○	FLUSH FIRE ALARM HORN / STRIKER LIGHT	88"
○	FLUSH FIRE ALARM SMOKE LIGHT OR HORN INDICATES FIRE ALARM HORN	88"
○	WEATHER PROOF FLUSH EXTERIOR FIRE ALARM HORN	120" **
○	SMOKE DETECTOR, CEILING MOUNTED	
○	DUCT MOUNTED SMOKE DETECTOR	
○	WALL MOUNTED SMOKE DETECTOR	72"
○	BEYOND MONITOR DETECTOR - CEILING MOUNTED	
○	WALL MOUNTED DETECTOR	
○	WIRELESS WALL LOCK, EMERGENCY POWERED	42"
○	SINGLE DIAL ADDRESS WALL LOCK, 120 VOLT	100"
○	DOUBLE DIAL ADDRESS WALL LOCK, 120 VOLT	100"
○	WALL MOUNTED SPEAKER	44" **
○	CEILING MOUNTED SPEAKER	
○	PENDANT MOUNTED SPEAKER	
○	WEATHER-PROOF EXTERIOR WALL MOUNTED SPEAKER	120"
○	MICROPHONE WALL OUTLET - SEE E4.1 & E4.2 FOR CABLING	20" **
○	NON-FUSED DISCONNECT SWITCH-30/72 INDICATES 30A, 2 POLE SWITCH	72" #
○	FUSED DISCONNECT SWITCH - 60/9/40 INDICATES 60A, 3 POLE SWITCH W/ 40A FUSES	72" #
○	ELECTRICAL PANELBOARD	72"
○	MOTOR OPERATED DAMPER - SEE MECH.	
○	RELAY - SEE MECHANICAL	
○	HVAC CONTROLS OUTLET W/ 1/2" UP IN WALL AND TURNED OUT ABOVE CEILING	48"
○	FRACTIONAL HORSEPOWER MOTOR	
○	MOTOR - HORSEPOWER AS INDICATED	
○	ABOVE FINISHED FLOOR	
○	ABOVE FINISHED GRADE	
○	HAND DRYER - SEE ARCHITECTURAL	
○	RIGID STEEL CONDUIT	
○	RAINTIGHT ENCLOSURE, NEMA 3R	
○	VARIABLE FREQUENCY DRIVE FURNISHED BY MECHANICAL	
○	CONDUIT CONCEALED IN HALL OR ABOVE CEILING	
○	CONDUIT CONCEALED UNDERGROUND OR BELOW ELEVATED FLOOR	
○	CONDUIT EXPOSED AT CEILING, CONCEALED IN WALLS	
○	ARROWS INDICATE HOVER/IN TO PANEL	
○	CROSS-MARKS INDICATE NO. OF CONDUCTORS, DOT INDICATES GROUND WIRE (2#12 MIN)	
○	THIST-LOG RECEPTACLE 30A-125V HBLHUBBELL 2810-1	20"

# = 36" AFF TO BOTTOM WHEN INSTALLED ON EXTERIOR OF BUILDING  
\*\* = OR AS NOTED ON PLANS  
\*\*\* = OR AS DIRECTED BY ARCHITECT



5 CLASSROOM EMERGENCY LIGHTS RELAY CONTROL WIRING DIAGRAM  
E6.1 NO SCALE - SCHEMATIC ONLY



6 TYPICAL MULTIWIRED BRANCH CIRCUIT RECEPTACLE DETAIL  
E6.1 NOT TO SCALE

LTG. CONTACTOR SCHEDULE							
SYMBOL	TYPE	CONTACT RATINGS			COIL VOLTAGE	BREAK CIRCUITS	MANUFACTURER & MODEL NO.
		POLES	AMPERE	VOLTAGE			
LC-1	ELEC. HELD	12	20A	277	277	HCL-1-4	SQUARE D 9403 L6120-V01
LC-2	ELEC. HELD	12	20A	277	277	HCL-1-12	SQUARE D 9403 L6120-V01
LC-3	ELEC. HELD	6	20A	277	277	HCL-19-14	SQUARE D 9403 L660-V01
LC-4	ELEC. HELD	12	20A	277	277	HFL-1-12	SQUARE D 9403 L6120-V01
LC-5	ELEC. HELD	6	20A	277	277	HFL-19	SQUARE D 9403 L660-V01
LC-6	ELEC. HELD	12	20A	277	277	HLL-1-10	SQUARE D 9403 L6120-V01
LC-7	ELEC. HELD	12	20A	277	277	HLL-1-11	SQUARE D 9403 L6120-V01

NOTES:  
1. SEE DETAIL 1/E6.1.  
2. CONTACTORS SHALL BE FACTORY ORDERED WITH NORMALLY CLOSED CONTACTS.

LIGHTING FIXTURES					
TYPE	LAMP SIZE	VOLT	DESCRIPTION	MIN. C.U. # 80/50/10 # 2/2/5	EQUALS BY
A	48W LED, 4000K 3026 LUMENS, 82CRI	277	COLUMBIA LIT4-40-4M4-FSAH-EDU 2 1/4" LAY-IN TROFFER WITH WHITE STEEL DOOR # 156" ACRYLIC LENS.		METALUX, MIDWEST, LIGHTOLIER, LSI, DAYBRITE, LITHONIA
B	36W LED, 4000K 4742 LUMENS, 82CRI	277	COLUMBIA LIT4-40-4M4-FSAH-EDU 2 1/4" LAY-IN TROFFER WITH WHITE STEEL DOOR # 156" ACRYLIC LENS.		METALUX, MIDWEST, LIGHTOLIER, LSI, DAYBRITE, LITHONIA
C	36W LED, 4000K 4742 LUMENS, 82CRI	277	COLUMBIA LIT4-40-4M4-FSAH-EDU 2 1/4" LAY-IN TROFFER WITH WHITE STEEL DOOR # 156" ACRYLIC LENS.		METALUX, MIDWEST, LIGHTOLIER, LSI, DAYBRITE, LITHONIA
D	50W LED, 4000K 4200 LUMENS, 82CRI	277	GEN STAR 484-L2-40-1-C 10 1/4" SURFACE MOUNTED WRAPAROUND WITH POLYCARBONATE LENS AND WHITE FINISH.		METALUX, MIDWEST, LIGHTOLIER, LSI, DAYBRITE, LITHONIA
DI			SAME AS TYPE D EXCEPT MNT LOCATION LISTED		
E	42W LED, 4000K 5411 LUMENS, 80CRI	277	COLUMBIA LCL4-40-4M4-ED-LCL1N64 - 4" STRIP WITH WHITE FINISH AND WIRE GUARD. SURFACE MOUNT ON CEILING OR CHAIN HANGS AT 10" AFF.		METALUX, MIDWEST, LIGHTOLIER, LSI, DAYBRITE, LITHONIA
EI		120	SAME AS TYPE E EXCEPT VOLTAGE		
G	160W LED 18000 DEL. LUMENS	277	GREE QX5-A-UV-H-40X8-UL1-C-2XBIN-MS-A H BAY WITH SPRAY ALUM. REFLECT. & WIRE GRD. PENDANT MNT. FROM LINSTRUT BAY STRUCTURE SO BOTTOM OF FIXT. IS EVEN W/ BOTTOM OF JOISTS		LITHONIA, PHILIPS
G	8-D22 ETC LED FIXTURE HEADS	120	ETC 1006A1003 - 12" SURFACE DATA TRACK AND ASSOCIATED HARDWARE. INSTALL TWO TRACKS FOR 24" RUN. PROVIDE (B) ETC D22 LED FIXTURE HEADS. SEE 2/EI.2.		COM-TECAL LUNG PRESCOLITE
H	39W LED, 4000K 3484 LUMENS, 82CRI	277	COLUMBIA LIT4-40-4M4-FSAH-EDU 1 1/4" LAY-IN TROFFER WITH WHITE STEEL DOOR # 156" ACRYLIC LENS.		METALUX, MIDWEST, LIGHTOLIER, LSI, DAYBRITE, LITHONIA
J	14W LED, 4000K 1000 LUMENS, 92CRI	277	PRESCOLITE LF66GSL-DM-1H-40K-WT-PL 6" RECESSED SQUARE WITH PRISMATIC LENS AND WHITE TRIM.		CAPRI, LIGHTOLIER, PORTFOLIO, HALO,
K	28W / 4100K LED	277	PHILIPS 66L20NMB310V/CYL15200L39K4CLUNV6 6" RECESSED DOWNLIGHT W/ SPEC. ALZAK REFLECTOR, WHITE TRIM FLANGE	0.50	HALO INTERTEC, EDISON-PRICE, PRESOLITE, SOTHAM, LIGHTOLIER
L	34.5W LED, 4000K 4325 LUMENS, 92CRI	277	LITHONIA HL4-40-LF840 4" WALL MOUNTED WRAPAROUND WITH ACRYLIC LENS AND WHITE FINISH.		
M	64 W LED 4800 DEL. LUMENS (PER 4' SECTION)	277	8" LED PENDANT-MOUNTED CYLINDER		CORELITE LUMENERX LITECONTROL
N	15W H.O. LED	120	LITHONIA GLYTHM ENCLOSED FIXTURE WITH CAST GUARD. MOUNT ON WALL 36" ABOVE PIT FLOOR.		REAL 6E SPECTRUM HUBBELL
P	64 W LED 4800 DEL. LUMENS (PER 4' SECTION)	277	LEDALITE 7806 L A C Q 6 20" 1 1/2" W SUSPENDED LINEAR W/ 80% DOWNLT, WHITE FINISH AND END CAPS. SUSPENDED AT 14" AFF		CORELITE LUMENERX LITECONTROL
XI	HIGH INTENSITY LED'S	277	LITHONIA LQMS-3R THERMOPLASTIC, SINGLE FACE EXIT WITH STENCIL FACE, RED LETTERS, CEILING MOUNTED		DUAL-LITE, SURE-LITES, EMERGH-LITE, CHLORIDE
X2	HIGH INTENSITY LED'S	277	LITHONIA LQMS-3R THERMOPLASTIC, SINGLE FACE EXIT WITH STENCIL FACE, RED LETTERS, WALL MNT. AT 7" AFF TO BOTTOM		DUAL-LITE, SURE-LITES, EMERGH-LITE, CHLORIDE
X3	HIGH INTENSITY LED'S	277	LITHONIA LQMS-3R THERMOPLASTIC, DOUBLE FACE EXIT WITH STENCIL FACE, RED LETTERS, CEILING MOUNTED		DUAL-LITE, SURE-LITES, EMERGH-LITE, CHLORIDE
X4	HIGH INTENSITY LED'S	277	LITHONIA LQMS-3R-ELAM61 THERMOPLASTIC, SINGLE FACE EXIT W/STENCIL FACE, RED LETTERS, WIRE GUARD, WALL MNT. 10" AFF		DUAL-LITE, SURE-LITES, EMERGH-LITE,
OA	18W/4000K LED	277	ECLIPSE CMB3H-LED30H-BZ 12" CAST ALUM. SURFACE SQUARE W/ POLYCARB. LENS, BRONZE FINISH, NET LABEL, THRU WIRING LISTED. MOUNT TO CANOPY.		DAY-BRITE, NI-ART, CSE, VOIGHT ACULITE, SENTINAL
OB	59W DEL. LUMENS	277	SPALDING TRF SOL 4K 053 3 U DB CAST ALUMINUM WALL MNT. FIXTURE W/ TYPE III DIST. TEMP. GLASS LENS, BRONZE FINISH		GARDCO LUMARK NEARLIGHT, LITHONIA, MIDNIGHT, LITHONIA, NEARLIGHT, LITHONIA, NEARLIGHT, LITHONIA, GARDCO LUMARK NEARLIGHT, LITHONIA, MIDNIGHT, LITHONIA, DECO
OBI	59W DEL. LUMENS	277	SAME AS TYPE 'OB' EXCEPT WITH PHOTO CELL.		
OC	128W LED 467 DEL. LUMENS	277	HUBBELL LNC-SLU-4K-4-1-PC4 CAST ALUM. WALLPACK W/ BRONZE FINISH, ACRYLIC DIFFUSER, PHOTO-CELL, WALL MNT. ABOVE DOOR.		

NOTES:  
1. NOT USED.  
2. 10 DAY PRIOR APPROVAL REQUIRED FOR ANY FIXTURE OR MANUFACTURER NOT LISTED ABOVE. SEE SPECIFICATIONS.  
3. VERIFY EXACT COLOR OF ALL SURFACE MOUNTER FIXTURES WITH ARCHITECT PRIOR TO ORDERING ANY FIXTURES.

DRAWING ISSUE RECORD		
DATE	REVISIONS	NO.
11-1-8	ISSUE TO BID	

HARMONY LELAND-CITY SCHOOL REPLACEMENT ELEMENTARY SCHOOL  
6526 FACTORY SQUARES RD., NW MABLETON, GA 30126 FOR CORB COUNTY SCHOOL DISTRICT CORB COUNTY, GA  
CCSD PROJECT NO. AUG7 / DUE FACILITY CODE  
DATE: JUL 7 16, 2019  
JOB NO. B-11-2019-18  
DRAWN BY: G.S.H.  
CHECKED BY: G.L.K.

cunningham, forehand, matthews & moore, architects, inc. - 2011 manchester street, n.e. - atlanta, georgia 30324 - phone (404) 873-2152

Order Plans @ [www.cfmplanning.com](http://www.cfmplanning.com)

SPURLOCK & ASSOCIATES, INC. consulting engineers  
2970 Clairmont Rd., Suite 620 | Atlanta, GA 30329  
P: 404.633.0245 | F: 404.633.1736  
JOB NO. 182

E6.1