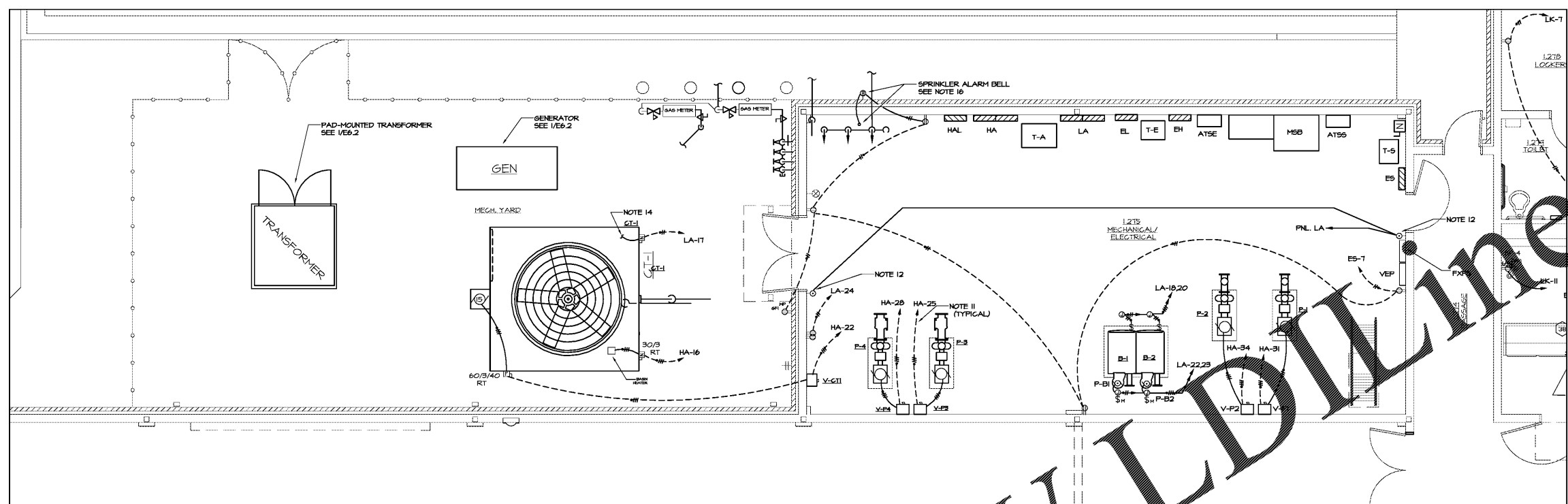
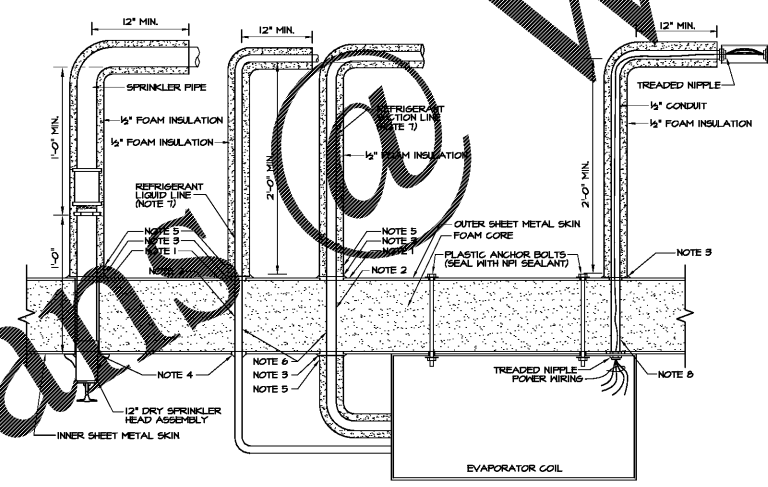


DATE	REVISIONS	NO.
11-1-18	ISSUE TO B'D	

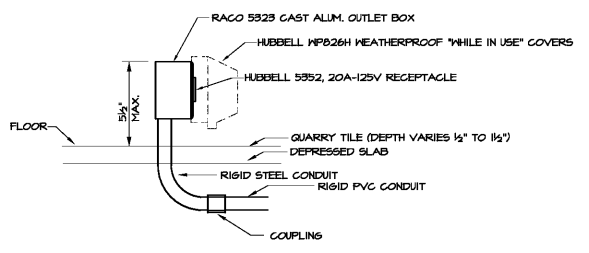


1 ENLARGED MECH. ROOM FLOOR PLAN - POWER
E2.7 1/8"=1'-0"

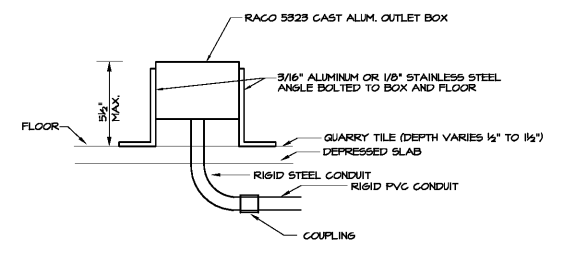


- COOLER PENETRATION NOTES:** (APPLIES TO THIS DETAIL ONLY)
- CUT SHEET METAL SKIN NOT THE FOAM CORE, 1/2" DIA. LARGER THAN PENETRATION SIZE ON INSIDE AND OUTSIDE.
 - BORE FOAM CORE 1/4" DIA. SMALLER THAN PENETRATION SIZE TO INSURE A TIGHT FIT.
 - SEAL THE PIPE INSULATION TO SHEET METAL WITH NFI SEALANT ONLY. MATCH SEALANT COLOR TO ADJACENT METAL SURFACE.
 - SEAL THE TOP AND BOTTOM HOLE IN METAL AROUND PIPES WITH NFI SEALANT ONLY. MATCH SEALANT COLOR TO ADJACENT METAL SURFACE.
 - PIPE INSULATION STOPS AT THE SHEET METAL ON BOTH INSIDE AND OUTSIDE OF COOLER/FREEZER WALL. PIPE INSULATION IS NOT TO GO THROUGH THE WALL.
 - THERE SHALL NOT BE ANY WELD JOINTS INSIDE COOLER/FREEZER WALLS.
 - RUN REFRIGERANT LINES IN SEPARATE PENETRATIONS.
 - CUT 1" HOLE IN INNER AND OUTER SHEET METAL SURFACES. BORE A 1/2" DIA. HOLE THROUGH FOAM CORE FOR POWER AND CONTROL WIRING. FILL CAVITY WITH NFI SEALANT FLUSH WITH INSIDE AND OUTSIDE METAL SURFACES. DO NOT RUN CONDUIT THRU FOAM CORE.

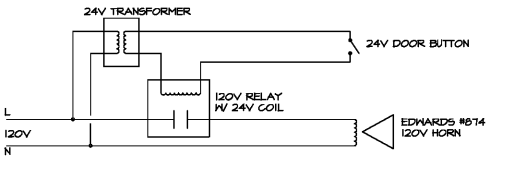
4 COOLER/FREEZER PENETRATION DETAIL
E2.8 NOT TO SCALE



2 KITCHEN EQUIP. STUB-UP DETAIL
E2.9 N.T.S.



4 KITCHEN EQUIP. STUB-UP DETAIL
E2.9 N.T.S.



3 WIRING SCHEMATIC
E2.9 NO SCALE

Order Plans @

www.ldline.com

HARMONY LELAND-CITY SCHOOL
REPLACEMENT ELEMENTARY SCHOOL

6528 FACTORY SCHOOLS RD., NW
MABLETON, GA 30126
FOR COBB COUNTY SCHOOL DISTRICT
COBB COUNTY, GA
CCSD PROJECT NO. A004 / DDE FACILITY CODE

DATE: JUL 16, 2019
JOB NO. B-L-1509-18
DRAWN BY: G.S.H.
CHECKED BY: G.L.K.
cunningham, forehand, matthews & moore, architects, inc. - 2011 manchester street, n.e. - atlanta, georgia 30324 - phone (404) 873-2152



SPURLOCK & ASSOCIATES, INC.
consulting engineers
2970 Clairmont Rd., Suite 420 | Atlanta, GA 30329
P: 404.633.0245 | F: 404.633.1736
JOB NO. 1822