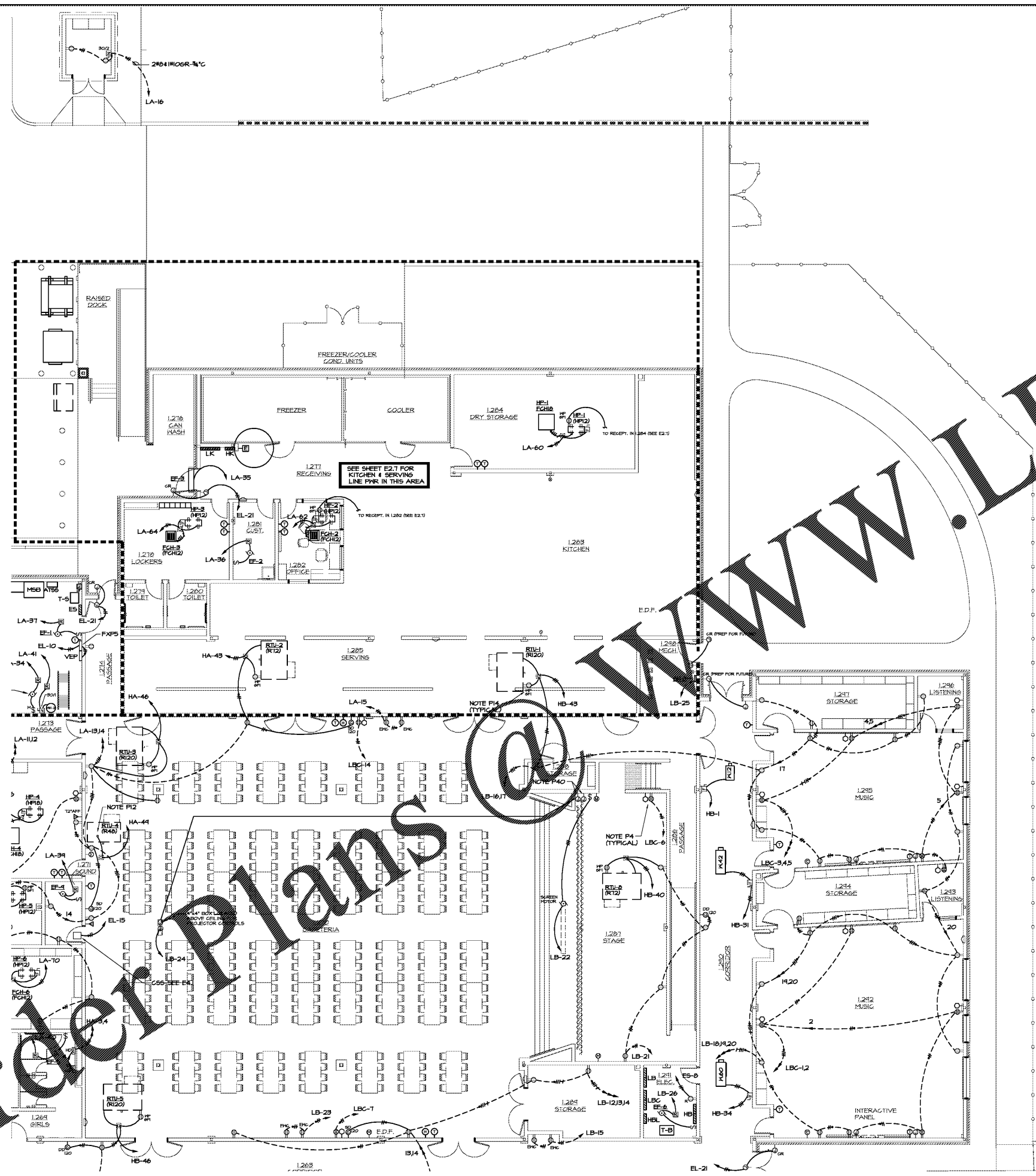


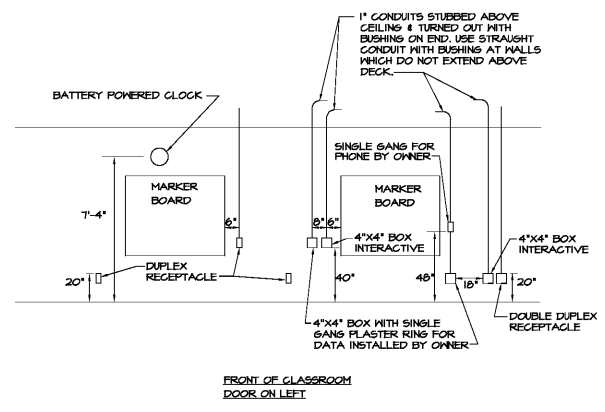
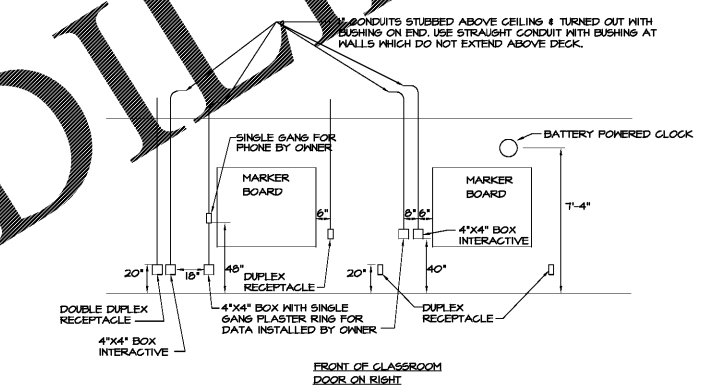
DRAWING ISSUE RECORD		
DATE	REVISIONS	NO.
11-1-18	ISSUE TO B/D	

HARMONY LELAND-CIT SCHOOL
 REPLACEMENT ELEMENTARY SCHOOL
 6526 FACTORY SCHOOLS RD., NW
 MABLETON, GA 30126
 FOR COBB COUNTY SCHOOL DISTRICT
 COBB COUNTY, GA
 CCSD PROJECT No. A04 / DDE FACILITY CODE
 JOB NO. B-L-1507-18
 DATE JULY 16, 2019
 DWG. BY G.S.H.
 CHK. BY G.L.K.



1 MAIN LEVEL PARTIAL PLAN - POWER
 E2.2 1/8"=1'-0"

SEE SHEET E2.1 FOR



2 TYPICAL CLASSROOM ELEVATION
 E2.2 NO SCALE - SCHEMATIC ONLY

Order Plans @ www.LDOnline.com

cunningham foehand mattheus moe

cunningham, foehand, mattheus & moore, architects, inc. - 2011 manchester street, n.e. - atlanta, georgia 30324 - phone (404) 873-2152

