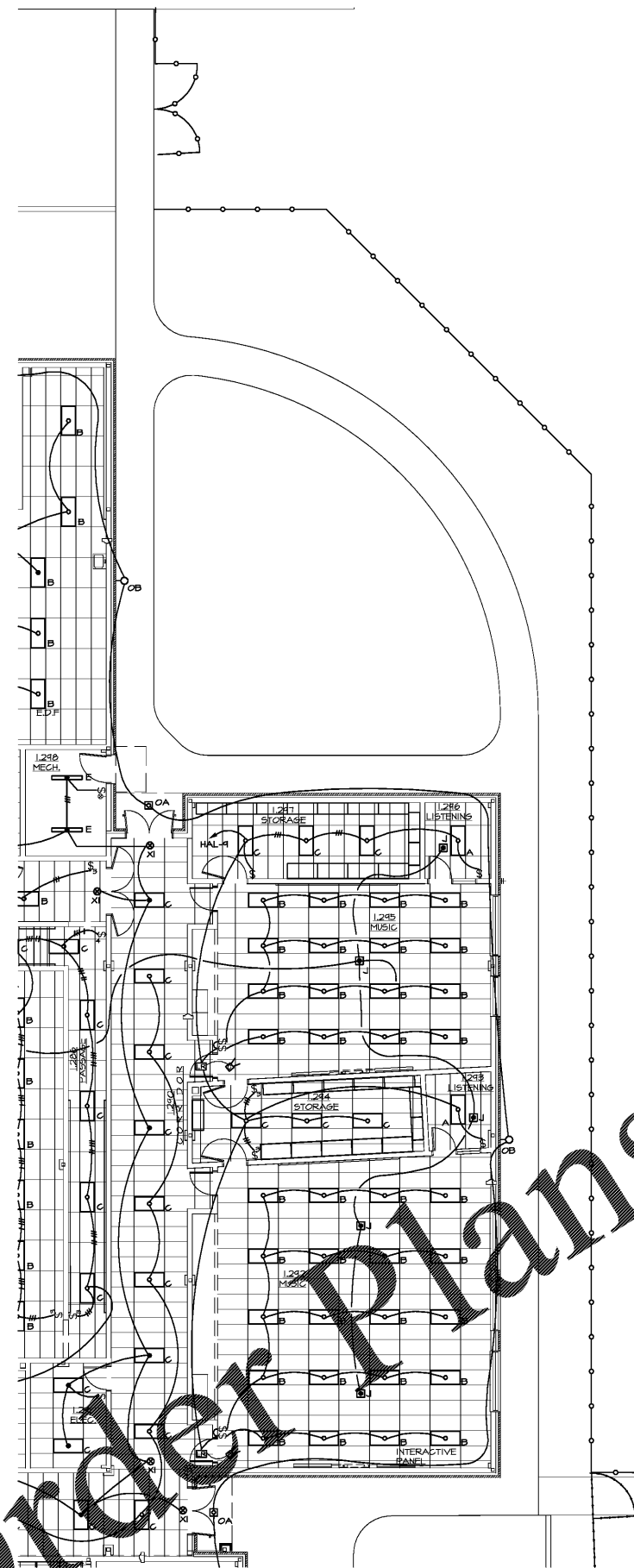
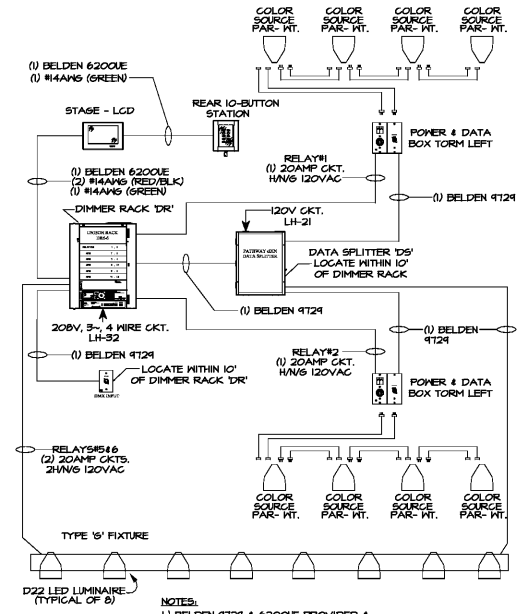


DRAWING ISSUE RECORD		
DATE	REVISIONS	NO.
11-1-16	ISSUE TO BID	

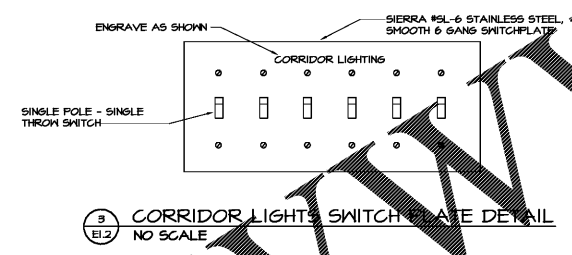
HARMONY LELAND CLARK SCHOOL REPLACEMENT ELEMENTARY SCHOOL
 6376 FACTORY SHOPS DRIVE SEWELL, GA 30087
 FOR COBB COUNTY SCHOOL DISTRICT
 COBB COUNTY, GA
 CCSD PROJECT No. A004 / DDE FACILITY CODE
 JOB NO. S11-002-18
 DATE JULY 16, 2018
 DWG. BY C.S.H.
 CHECKED BY C.L.K.



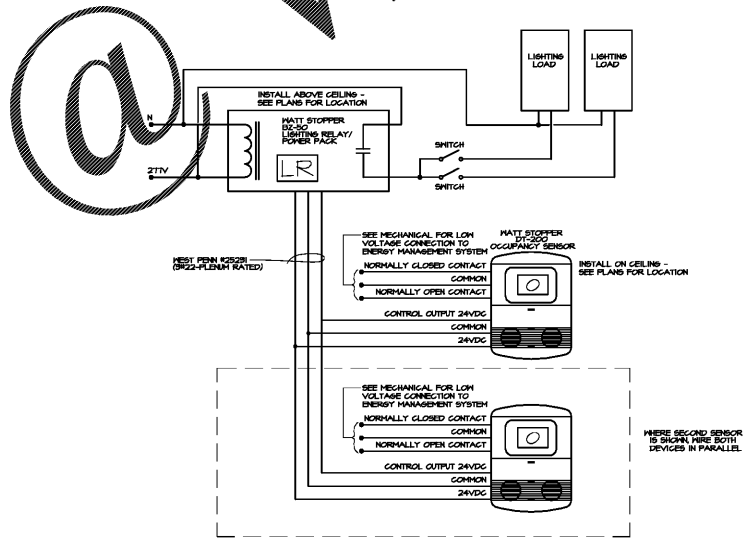
1 MAIN LEVEL PARTIAL PLAN - LIGHTING
E1.2 / 1/8" = 1'-0"



2 THEATER LTG. SYSTEM RISER
E1.2 NO SCALE



3 CORRIDOR LIGHTS SWITCH PLATE DETAIL
E1.2 NO SCALE



4 OCCUPANCY SENSOR WIRING DIAGRAM
E1.2 NOT TO SCALE

GENERAL NOTES: (APPLIES TO ALL SHEETS)

- A. ALL PENETRATIONS THROUGH FIRE HALLS AND FLOORS SHALL BE FIRE STOPPED WITH 3M FIRE BARRIER OR EQUAL PRODUCT MEETING UL 1471 OR ASTM E814 FIRE RATING IN ACCORDANCE WITH ARTICLE 900-21 OF THE NATIONAL ELECTRICAL CODE.
- B. ALL AREAS OF BUILDING, EXCEPT CORRIDORS, HAVE RETURN AIR FLENS ABOVE CEILING. ALL MATERIALS WITHIN FLENS ARE REQUIRED TO BE NONCOMBUSTIBLE OR SHALL HAVE A FLAME SPREAD INDEX OF NOT MORE THAN 25 AND A SMOKE DEVELOPED INDEX OF NOT MORE THAN 50 AS DETERMINED IN ACCORDANCE WITH ASTM E84.

LIGHTING REFERENCED NOTES: (SHEETS E1.1-E1.7)

- L1. IN CLASSROOMS, SWITCH ROOM OF FIXTURES AT MARKERBOARD WITH ONE SWITCH AND OTHER FIXTURES IN THE ROOM WITH SECOND SWITCH FOR DUAL LEVEL LIGHTING.
- L2. CONNECT CENTER LAMP BALLAST TO EMERGENCY CIRCUIT IN TYPES 'A' AND 'B' FIXTURES WHERE INDICATED.
- L3. INSTALL ENGRAVED LAMINATED NAMEPLATE ABOVE WALL SWITCH READING: "OUTSIDE LIGHTING" ABOVE SWITCH AND "EMERGENCY LIGHTING" ABOVE SWITCH.
- L4. WHERE CONTINUOUS ROWS OF FIXTURES ARE SHOWN CONNECT AT ONE END, CONNECT ALL OTHER FIXTURES IN ROW TO THE SAME CIRCUIT.
- L5. COORD. LOCATION OF ALL STAGE LIGHTS & SOUNDING EQUIP. IN ROOM BEFORE INSTALLATION.
- L6. CONNECT CORRIDOR LIGHTING SWITCH IN SCHOOL RECEPTION LIGHTING DESIGNATED BY CIRCUIT LABEL. SEE PLANS.
- L7. SEE SPEC FOR WIRING OF OCCUPANCY SENSORS.
- L8. INSTALL CONDUIT ON SIDES OF CANOPY BEAMS AND PAINT TO MATCH.
- L9. INSTALL FIXTURES ON BOTTOM OF CANOPY BEAM.
- L10. ALL CONDUIT IN CORRIDORS SHALL BE ABOVE RHP UNITS AND OUT OF UNIT ACCESS SPACES. SEE MECHANICAL FOR ACCESS SPACES.
- L11. CONNECT UNDER COUNTER LIGHT FIXTURES (TYPE 'M') TO RECEPTACLE CIRCUIT INDICATED. SWITCH LIGHT WITH WALL SWITCH MOUNTED AT END OF COUNTER AS SHOWN.
- L12. INSTALL FOUR NEW LIGHTING NMFKI-BLED 42CLD CHROME RICK LIGHTS IN DISPLAY CASE. PROVIDE NMFKI-BLED POWER LINE CONNECTOR AND ALL INSTALLATION HARDWARE REQUIRED TO INSTALL IN CASE AS SHOWN IN ARCH. DETAIL. CONTROL WITH SWITCH MOUNTED ON WALL 12" AFF. CONNECT TO 120V AT RECEPTACLE BELOW SWITCH.
- L13. PROVIDE GYM OCCUPANCY SENSORS AND CONNECT SO THAT ANY SENSOR CAN BE ACTIVATED TO TURN GYM LIGHTS ON AND ALL SENSORS MUST TIME OUT TO TURN LIGHTS OFF.
- L14. MOUNT TYPE 'D' FIXTURES IN GYMNASIUM TO BOTTOM OF STRUCTURE IN APPROX. LOCATION SHOWN.
- L15. INSTALL POWER AND DATA BOXES 18" AFF ADJACENT TO 6" HORIZONTAL TORM PIPE FOR NEW THEATRICAL LIGHTS - SEE RISER 2/E1.2. PROVIDE (4) COLOR SOURCE PAR-MT FIXTURES AND ALL MOUNTING CLAMPS AND EQUIPMENT FOR EACH PIPE AS SPECIFIED. COORDINATE WITH ARCHITECT FOR EXACT LOCATION OF NEW BOXES IN RELATION TO PIPE LOCATION AND HVAC DIFFUSERS (AT 12" AFF).
- L16. CONNECT TO MOTORIZED SHADES AND SWITCH FURNISHED UNDER ARCHITECTURAL. PROVIDE CONDUIT AND CONDUCTORS AND MAKE CONNECTIONS AS DIRECTED BY MANUFACTURER'S SHOP DRAWINGS.

Order Plans

WWW.WWJ.com

cunningham forehand matthews moore

cunningham, forehand, matthews & moore, architects, inc. - 2011 manchester street, n.e. - atlanta, georgia 30324 - phone (404) 873-2152

